



**STATE OF HAWAII
DEPARTMENT OF TRANSPORTATION
869 PUNCHBOWL STREET
HONOLULU, HAWAII 96813-5097**

IN REPLY REFER TO:

Board of Land and
Natural Resources
State of Hawai'i
Honolulu, Hawai'i

**ISSUANCE OF A REVOCABLE PERMIT FOR AIRCRAFT PARKING
K & S HELICOPTERS, INC.
HILO INTERNATIONAL AIRPORT
TAX MAP KEY: (3) 2-1-12: PORTION OF 90**

HAWAII

REQUEST:

Issuance of a Revocable Permit for Aircraft Parking (parking permit) to K & S Helicopters, Inc. (K & S) at Hilo International Airport.

LEGAL REFERENCE:

Sections 171-11 and 171-55, Hawai'i Revised Statutes

APPLICANT:

K & S Helicopters, Inc., whose business address is P.O. Box 5371, Kailua-Kona, Hawai'i 96745.

AREA:

Area/Space No. 523-106, containing an area of approximately 1,963 square feet, as shown and delineated on the attached map labeled Exhibit "A".

LOCATION AND TAX MAP KEY:

Portion of Hilo International Airport (ITO), Hilo, Island of Hawai'i, identified by Tax Map Key: 3rd Division, 2-1-12: Portion of 90.

ZONING:

State Land Use District:	Urban
County of Hawai'i:	Industrial (ML-20)

BLNR – ISSUANCE OF A REVOCABLE PERMIT FOR AIRCRAFT PARKING
K & S HELICOPTERS, INC., HILO INTERNATIONAL AIRPORT
Page 2

LAND TITLE STATUS:

Section 5(a) lands of the Hawai'i Admission Act - Ceded
DHHL 30% entitlement lands pursuant to Hawai'i Admission Act YES ___ NO X

CURRENT USE STATUS:

Airport and aeronautical purposes

CHARACTER OF USE:

Aircraft parking for a tie down

COMMENCEMENT DATE:

May 1, 2017

MONTHLY RENTAL:

\$ 96.00 (as determined from the DOTA schedule of rates and charges established by appraisal of Airports property statewide).

SECURITY DEPOSIT:

\$ 288.00 (three times the monthly rental)

HOLDOVER TENANCY:

\$ 3.20

DCCA VERIFICATION:

Place of business registration confirmed:	YES <u>X</u>	NO ___
Registered business name confirmed:	YES <u>X</u>	NO ___
Good standing confirmed:	YES <u>X</u>	NO ___

CHAPTER 343, HRS - ENVIRONMENTAL ASSESSMENT:

The issuance of a revocable permit for aircraft parking (parking permit) to K & S, at Hilo International Airport complies with Chapter 343, Exemption Class 1.D.10 as a continuing aeronautical use, and is in accordance with Section 171-55 HRS, relating to Permits. The DOTA consulted with the U.S. Federal Aviation Administration as to the appropriateness of the citation of the Environmental Exemption Class from the Comprehensive list for the Department of Transportation dated November 15, 2000. The FAA has concurred on the appropriateness.

BLNR – ISSUANCE OF A REVOCABLE PERMIT FOR AIRCRAFT PARKING
K & S HELICOPTERS, INC., HILO INTERNATIONAL AIRPORT

Page 3

REMARKS:

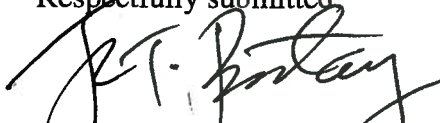
At its meeting on August 28, 2015, Item M-13, the Board approved K & S' request for month-to-month parking for its aircraft on Area/Space No. 523-112. At its meeting held on April 21, 2017, the Runway Safety Action Team of ITO determined Area/Space No. 523-112 to be unsafe because of its close proximity to the security identification area gate accessing the helipads and to the recently constructed ramp bypass road that would cause congestion to vehicular traffic in the immediate area. Because of this recommendation, ITO offered to K & S, Area/Space No. 523-106.

The Department of Transportation (DOT) has no objections to K & S' request; and, therefore, in accordance with Sections 171-11 and 171-55, HRS, relating to Public Purposes and Permits, respectively, the DOT proposes to issue a month-to-month parking permit to K & S, Area/Space No. 523-106 for aircraft parking at ITO.


RECOMMENDATION:

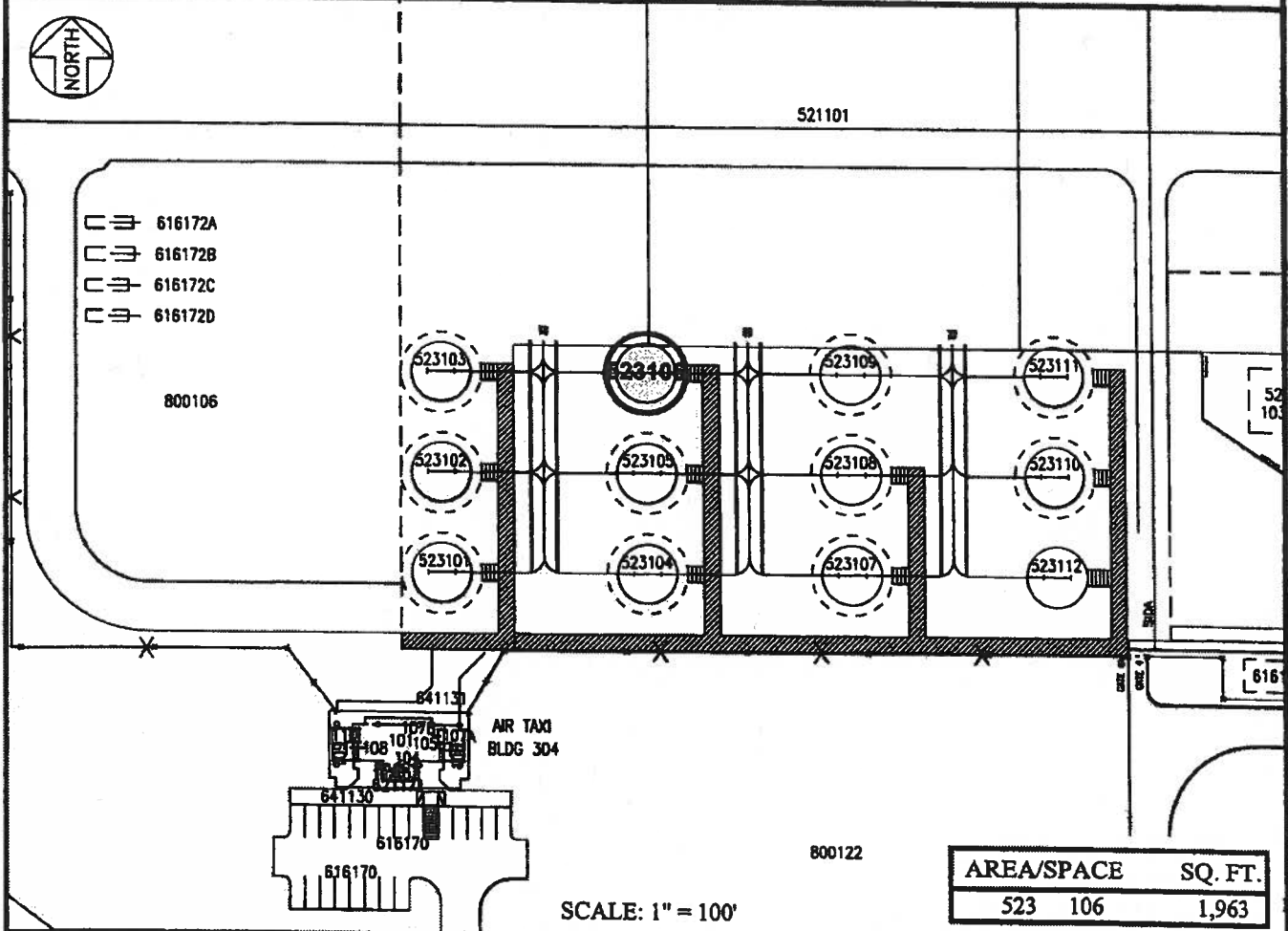
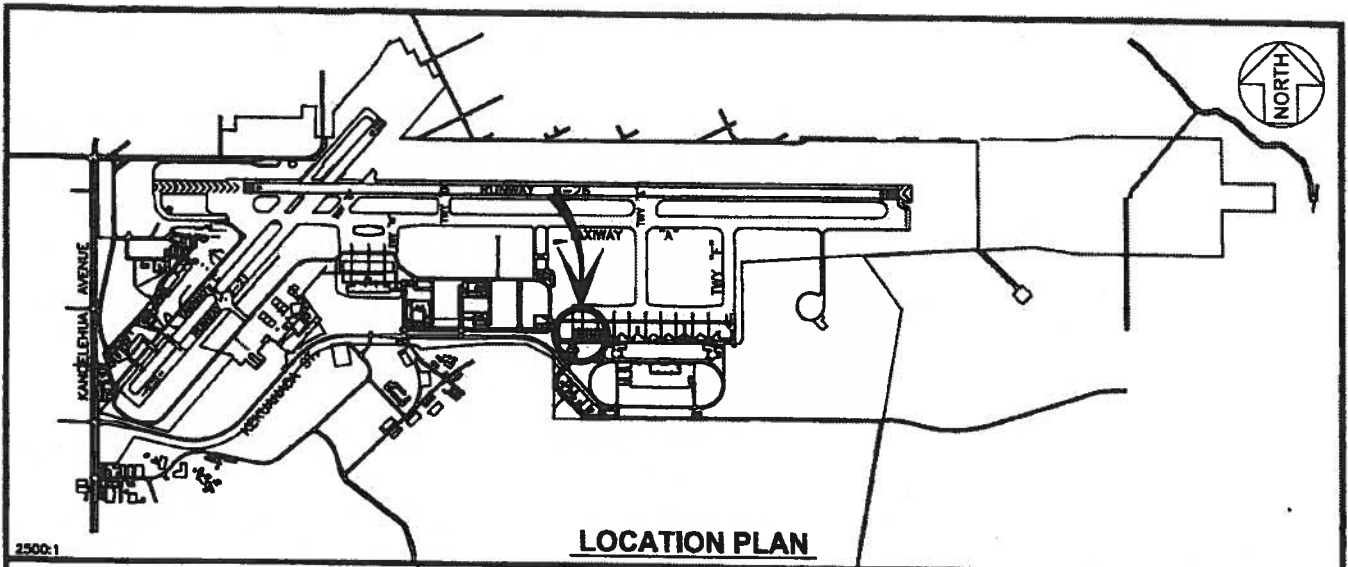
That the Board authorize the Department of Transportation to issue a month-to-month parking permit to K & S, subject to: (1) terms and conditions herein outlined, which are by reference incorporated herein; and (2) such additional terms and conditions as may be prescribed by the Director of Transportation to best serve the interests of the State.


Respectfully submitted,


FOR FORD N. FUCHIGAMI
Director of Transportation

APPROVED FOR SUBMITTAL:


SUZANNE D. CASE
Chairperson and member



PP-17-S303	DATE : JANUARY 2017	EXHIBIT: A
 Airports Division	K & S HELICOPTERS, INC.	HELIPAD
		523106 PLAT 42

HILO INTERNATIONAL AIRPORT

N:\AIRPORTS\TO_Hilo\CAD\Plan\Ro_523106-02.dwg