

**STATE OF HAWAII**  
**DEPARTMENT OF TRANSPORTATION**  
869 PUNCHBOWL STREET  
HONOLULU, HAWAII 96813-5097

FORD N. FUCHIGAMI  
DIRECTOR

Deputy Directors  
JADE T. BUTAY  
ROSS M. HIGASHI  
EDWIN H. SNIFFEN  
DARRELL T. YOUNG

IN REPLY REFER TO:

Board of Land and  
Natural Resources  
State of Hawai'i  
Honolulu, Hawai'i

ISSUANCE OF A REVOCABLE PERMIT  
AIRCRAFT PARKING FOR HELICOPTER TOUR OPERATION  
HAWAII PACIFIC AVIATION INC. DBA MAUNA LOA HELICOPTERS TOURS  
DANIEL K. INOUE INTERNATIONAL AIRPORT O'AHU  
TAX MAP KEY: (1) 1-1-003: PORTION OF 001

REQUEST:

Issuance of a revocable permit for aircraft parking in connection with Hawaii Pacific Aviation Inc. dba Mauna Loa Helicopter Tours, helicopter tour operation, at the Daniel K. Inouye International Airport.

LEGAL REFERENCE:

Section 171-55, Hawai'i Revised Statutes.

APPLICANT:

Hawaii Pacific Aviation Inc. dba Mauna Loa Helicopter Tours (HPA), whose mailing address is 73-310 U'u Street, Kailua-Kona, Hawai'i 96740.

LOCATION AND TAX MAP KEY:

Portion of the Daniel K. Inouye International Airport, Island of O'ahu, State of Hawai'i, identified by Tax Map Key: 1<sup>st</sup> Division, 1-1-003: portion of 001.

AREA:

Area/Space No. 548-101A, containing an area of approximately 990 square feet;  
Area/Space No. 548-101B, containing an area of approximately 990 square feet; and  
Area/Space No. 548-101C, containing an area of approximately 990 square feet;  
as shown and delineated on the attached map labeled Exhibit "A".

BLNR – ISSUANCE OF A REVOCABLE PERMIT FOR AIRCRAFT PARKING  
HAWAII PACIFIC AVIATION INC. DBA MAUNA LOA HELICOPTER TOURS  
Page 2

ZONING:

State Land Use District: Urban  
City and County of Honolulu LUO: Industrial (I-2)

LAND TITLE STATUS:

Non-ceded - Section 5(a) lands of the Hawai'i Admission Act  
DHHL 30% entitlement lands pursuant to Hawai'i Admission Act YES \_\_\_ NO X

CURRENT USE STATUS:

Land presently encumbered by Governor's Executive Order No. 3201, dated June 8, 1983, setting aside 3,152.177 acres designated as the Daniel K. Inouye International Airport under the control and management of the State of Hawai'i, Department of Transportation, Airports Division (DOTA) for Airport Purposes.

CHARACTER OF USE:

Aircraft parking for helicopter tour operations, (Tail Nos. N-31551, and N-715SG.

COMMENCEMENT DATE:

To be determined by the Director of Transportation upon execution of the revocable permit.

MONTHLY RENTAL:

\$1,343.93 (based on a rate of \$5.43 per square foot, per annum, as determined from the DOTA schedule of rates and charges established by appraisal of Airports properties statewide).

SECURITY DEPOSIT:

Three (3) times the monthly rental in effect.

CHAPTER 343, HRS - ENVIRONMENTAL ASSESSMENT:

Pursuant to Section 11-200-8(a), Environmental Impact Statement Rules of the Department of Health, State of Hawai'i, this disposition is exempt from requirements regarding preparation of an environmental assessment, negative declaration, or environmental impact statement as required by Chapter 343, Hawai'i Revised Statutes, as amended, relating to

BLNR – ISSUANCE OF A REVOCABLE PERMIT FOR AIRCRAFT PARKING  
HAWAII PACIFIC AVIATION INC. DBA MAUNA LOA HELICOPTER TOURS  
Page 3

Environmental Impact Statements, because the proposed action falls within Exemption Class #1, Comprehensive Exemption List for the State of Hawai‘i, Department of Transportation, dated November 15, 2000, as approved by the Environmental Quality Council. Exemption Class #1 covers operations, repairs, or maintenance of existing structures, facilities, equipment, or topographical features involving negligible or no expansion or change of use beyond that previously existing.

The DOTA consulted with the U.S. Federal Aviation Administration as to the appropriateness of the citation of the Environmental Exemption Class from the Comprehensive list for the Department of Transportation dated November 15, 2000. The FAA concurred on the appropriateness.

REMARKS:

The issuance of a revocable permit for aircraft parking in connection with HPA’s helicopter tour operation at the Daniel K. Inouye International Airport complies with Chapter 343, Exemption Class 1.D.10 as a continuing aeronautical use, and is in accordance with Section 171-55 HRS, relating to Permits.

RECOMMENDATION:

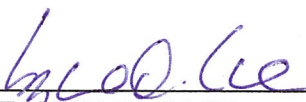
That the Board authorize the Department of Transportation to issue a month-to-month revocable permit to HPA, subject to: (1) terms and conditions herein outlined, which are by reference incorporated herein; and (2) such additional terms and conditions as may be prescribed by the Director of Transportation to best serve the interests of the State.

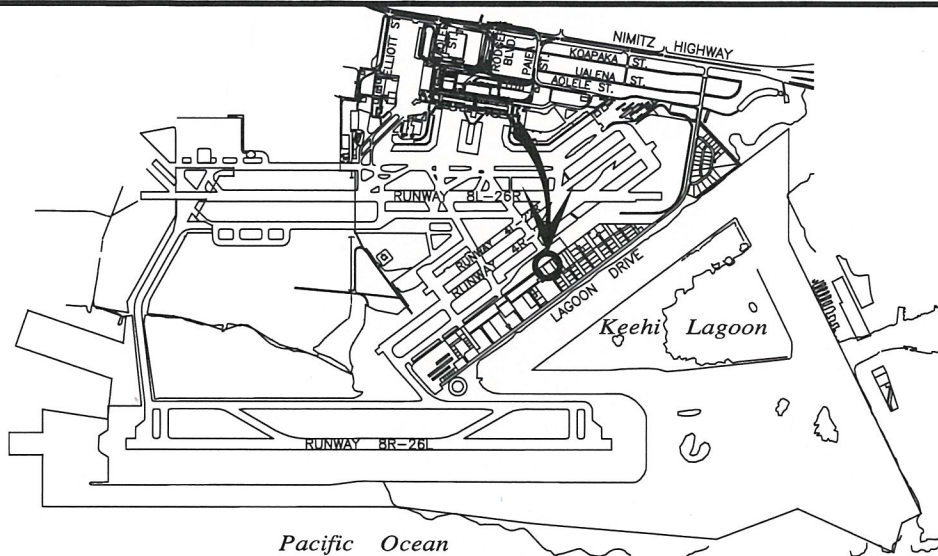
Respectfully submitted,



FORD N. FUCHIGAMI  
Director of Transportation

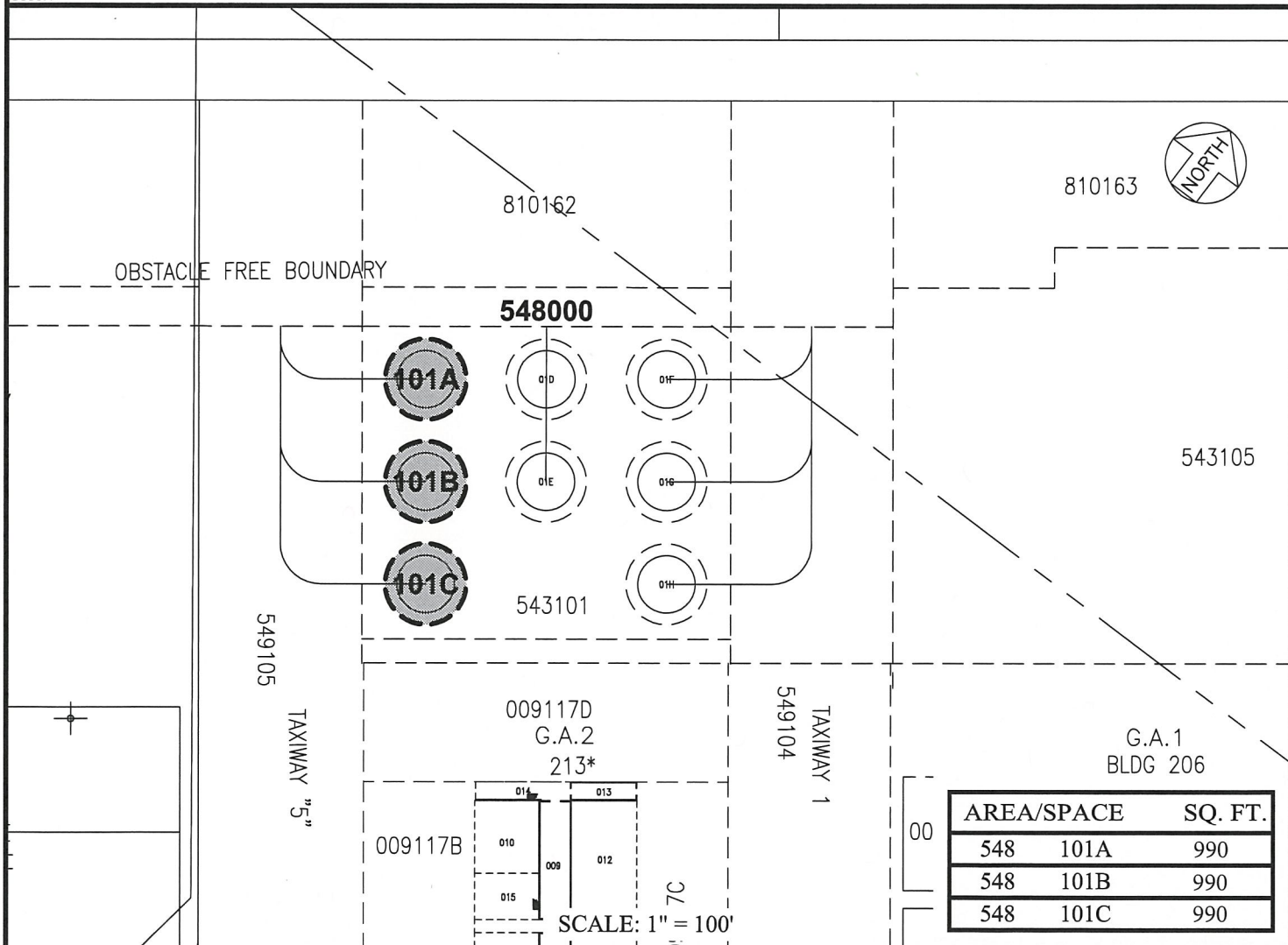
APPROVED FOR SUBMITTAL:

  
\_\_\_\_\_  
SUZANNE D. CASE  
Chairperson and Member



**LOCATION PLAN**

5000:1



AREA/SPACE	SQ. FT.
548 101A	990
548 101B	990
548 101C	990

DATE : AUGUST 2017

EXHIBIT: **A**



Airports Division

HAWAII  
 PACIFIC AVIATION, INC.

HELICOPTER  
 PARKING  
 SOUTH RAMP

548101A  
 548101B  
 548101C  
 PLAT 35