



STATE OF HAWAII
DEPARTMENT OF TRANSPORTATION
869 PUNCHBOWL STREET
HONOLULU, HAWAII 96813-5097

FORD N. FUCHIGAMI
DIRECTOR

Deputy Directors
JADE T. BUTAY
ROSS M. HIGASHI
EDWIN H. SNIFFEN
DARRELL T. YOUNG

IN REPLY REFER TO:

Board of Land and
Natural Resources
State of Hawai'i
Honolulu, Hawai'i

ISSUANCE OF A REVOCABLE PERMIT
AIRCRAFT PARKING FOR HELICOPTER TOUR OPERATION
NOVICTOR AVIATION LLC DBA NOVICTOR HELICOPTERS
DANIEL K. INOUE INTERNATIONAL AIRPORT
TAX MAP KEY: (1) 1-1-003: PORTION OF 001

O'AHU

REQUEST:

Issuance of a revocable permit for aircraft parking in connection with Novictor Aviation LLC dba Novictor Helicopters, helicopter tour operation, at the Daniel K. Inouye International Airport.

LEGAL REFERENCE:

Section 171-55, Hawai'i Revised Statutes.

APPLICANT:

Novictor Aviation LLC dba Novictor Helicopters (Novictor), whose mailing address is 155 Kapalulu Place, Suite 197, Honolulu, Hawai'i 96819.

LOCATION AND TAX MAP KEY:

Portion of the Daniel K. Inouye International Airport, Island of O'ahu, State of Hawai'i, identified by Tax Map Key: 1st Division, 1-1-003: portion of 001.

AREA:

Area/Space No. 548-101D, containing an area of approximately 990 square feet;
Area/Space No. 548-101E, containing an area of approximately 990 square feet;
Area/Space No. 548-101F, containing an area of approximately 990 square feet;
Area/Space No. 548-101G, containing an area of approximately 990 square feet; and
Area/Space No. 548-101H, containing an area of approximately 990 square feet
as shown and delineated on the attached map labeled Exhibit "A".

ITEM M-5

ZONING:

State Land Use District: Urban
City and County of Honolulu LUO: Industrial (I-2)

LAND TITLE STATUS:

Non-ceded - Section 5(a) lands of the Hawai'i Admission Act
DHHL 30% entitlement lands pursuant to Hawai'i Admission Act YES ___ NO X

CURRENT USE STATUS:

Land presently encumbered by Governor's Executive Order No. 3201, dated June 8, 1983, setting aside 3,152.177 acres designated as the Daniel K. Inouye International Airport under the control and management of the State of Hawai'i, Department of Transportation, Airports Division (DOTA) for Airport Purposes.

CHARACTER OF USE:

Aircraft parking for helicopter tour operations, (Tail Nos. N106TC, N-4828H, N-165TC, N-74508, and N-632NV).

COMMENCEMENT DATE:

To be determined by the Director of Transportation upon execution of the revocable permit.

MONTHLY RENTAL:

\$2,239.88 (based on a rate of \$5.43 per square foot, per annum, as determined from the DOTA schedule of rates and charges established by appraisal of Airports properties statewide).

SECURITY DEPOSIT:

Three (3) times the monthly rental in effect.

CHAPTER 343, HRS - ENVIRONMENTAL ASSESSMENT:

Pursuant to Section 11-200-8(a), Environmental Impact Statement Rules of the Department of Health, State of Hawai'i, this disposition is exempt from requirements regarding preparation of an environmental assessment, negative declaration, or environmental impact statement as required by Chapter 343, Hawai'i Revised Statutes, as amended, relating to Environmental Impact Statements, because the proposed action falls within Exemption Class #1, Comprehensive Exemption List for the State of Hawai'i, Department of

BLNR – ISSUANCE OF A REVOCABLE PERMIT FOR AIRCRAFT PARKING
NOVICTOR AVIATION LLC

Page 3

Transportation, dated November 15, 2000, as approved by the Environmental Quality Council. Exemption Class #1 covers operations, repairs, or maintenance of existing structures, facilities, equipment, or topographical features involving negligible or no expansion or change of use beyond that previously existing.

The DOTA consulted with the U.S. Federal Aviation Administration as to the appropriateness of the citation of the Environmental Exemption Class from the Comprehensive list for the Department of Transportation dated November 15, 2000. The FAA concurred on the appropriateness.

REMARKS:

The issuance of a revocable permit for aircraft parking in connection with Novictor's helicopter tour operation at the Daniel K. Inouye International Airport complies with Chapter 343, Exemption Class 1.D.10 as a continuing aeronautical use, and is in accordance with Section 171-55 HRS, relating to Permits.

RECOMMENDATION:

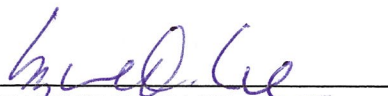
That the Board authorize the Department of Transportation to issue a month-to-month revocable permit to Novictor, subject to: (1) terms and conditions herein outlined, which are by reference incorporated herein; and (2) such additional terms and conditions as may be prescribed by the Director of Transportation to best serve the interests of the State.

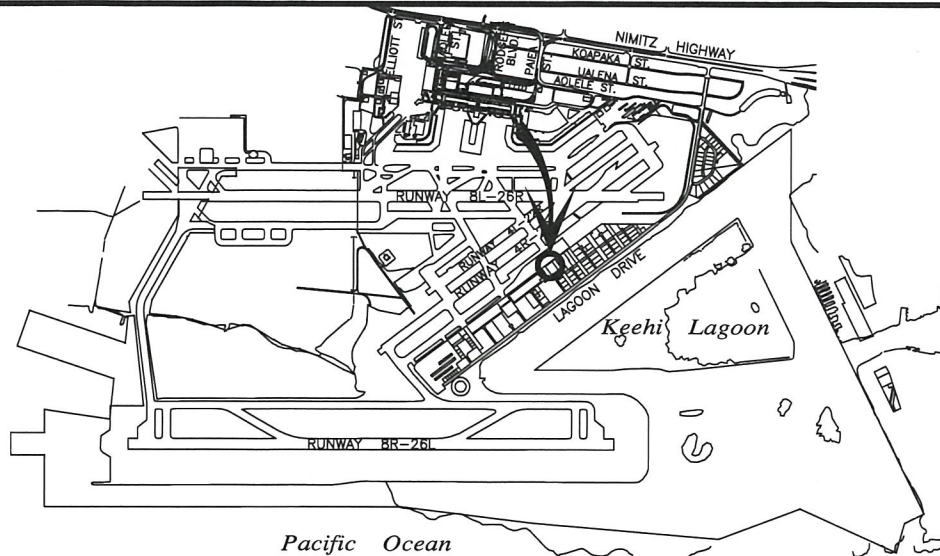
Respectfully submitted,



FORD N. FUCHIGAMI
Director of Transportation

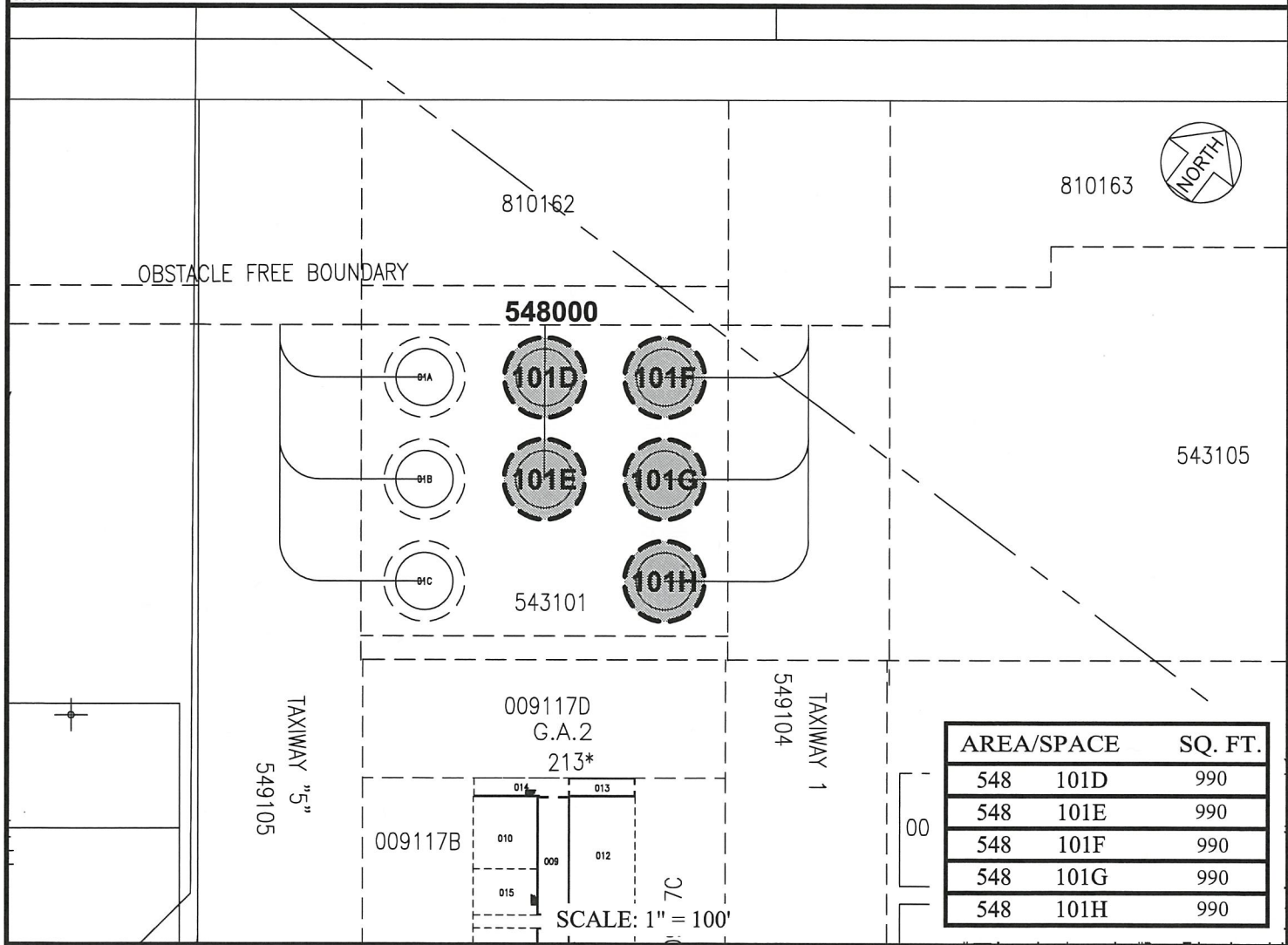
APPROVED FOR SUBMITTAL:


SUZANNE D. CASE
Chairperson and Member



LOCATION PLAN

5000:1



DATE : AUGUST 2017

EXHIBIT: **A**



Airports Division

NOVICTOR AVIATION, LLC.

HELICOPTER
PARKING
SOUTH RAMP

548101D-
548101H

PLAT 35

DANIEL K. INOUE INTERNATIONAL AIRPORT

N:\AIRPORTS\HNL_HONOLULU\CAD\PM\HNL_548101D-01.DWG