

STATE OF HAWAII
DEPARTMENT OF TRANSPORTATION
AIRPORTS DIVISION
400 RODGERS BOULEVARD, SUITE 700
HONOLULU, HAWAII 96819-1880

Board of Land and
Natural Resources
State of Hawai'i
Honolulu, Hawai'i

ISSUANCE OF A REVOCABLE PERMIT FOR VEHICLE PARKING
KOOLAU AVIATION SERVICES INC.
ELLISON ONIZUKA KONA INTERNATIONAL AIRPORT AT KEĀHOLE
TAX MAP KEY: (3) 7-3-43: PORTION OF 40 HAWAI'I

REQUEST:

Issuance of a Revocable Permit for Vehicle Parking (parking permit) to Koolau Aviation Services Inc. (Koolau).

LEGAL REFERENCE:

Subsection 171-11 and 171-55, Hawai'i Revised Statutes (HRS).

APPLICANT:

KOOLAU, whose mailing address is P. O. Box 2640, Wailuku, Hawai'i 96793.

AREA:

Area/Space No. 610-154C, containing an area of approximately 513 square feet, as shown on the attached map labeled Exhibit A.

LOCATION AND TAX MAP KEY:

Portion of Ellison Onizuka Kona International Airport at Keāhole (KOA), Kailua-Kona, Island of Hawai'i, identified by Tax Map Key: 3rd division, 7-3-43: Portion of 40.

ZONING:

State Land Use District:
County of Hawai'i:

Urban & Conservation
Industrial (MG-1a) and Open

BLNR- ISSUANCE OF A REVOCABLE PERMIT FOR VEHICLE PARKING
KOOLAU AVIATION SERVICES INC.

Page 2

LAND TITLE STATUS:

Section 5(b), Hawai'i Admissions Act (ceded)
DHHL, 30% entitlement lands Yes _____ No X

CURRENT USE STATUS:

Airport purposes.

CHARACTER OF USE:

Vehicle parking.

COMMENCEMENT DATE:

August 1, 2017

MONTHLY RENTAL:

\$ 156.00 (as determined from the DOTA schedule of rates and charges established by appraisal of Airports property statewide).

SECURITY DEPOSIT:

\$ 468.00 (three times the monthly rental).

DCCA VERIFICATION:

N/A

CHAPTER 343, HRS - ENVIRONMENTAL ASSESSMENT:

Pursuant to Section 11-200-8(a), Environmental Impact Statement Rules of the Department of Health, State of Hawai'i, this disposition is exempt from requirements regarding preparation of an environmental assessment, negative declaration, or environmental impact statement as required by Chapter 343, Hawai'i Revised Statutes, as amended, relating to Environmental Impact Statements, because the proposed action falls within Exemption Class #1, Comprehensive Exemption List for the State of Hawai'i, Department of Transportation, dated November 15, 2000, as approved by the Environmental Quality Council. Exemption Class #1 covers operations, repairs, or maintenance of existing structures, facilities, equipment, or topographical features involving negligible or no expansion or change of use beyond that previously existing.

BLNR- ISSUANCE OF A REVOCABLE PERMIT FOR VEHICLE PARKING
KOOLAU AVIATION SERVICES INC.

Page 3

The DOTA consulted with the U.S. Federal Aviation Administration as to the appropriateness of the citation of the Environmental Exemption Class from the Comprehensive list for the Department of Transportation dated November 15, 2000. The FAA has concurred on the appropriateness.

REMARKS:

The DOT has no objections to KOOLAU's request and therefore, in accordance with Sections 171-11 and 171-55, HRS, relating to Public Purposes and Permits, respectively, and therefore, the DOT proposes to issue a month-to-month parking permit to KOOLAU for vehicle parking at KOA.

RECOMMENDATION:

That the Board authorize the Department of Transportation to issue a month-to-month parking permit to KOOLAU subject to: (1) terms and conditions herein outlined, which are by reference incorporated herein; and (2) such additional terms and conditions as may be prescribed by the Director of Transportation to best serve the interests of the State.

Respectfully submitted,

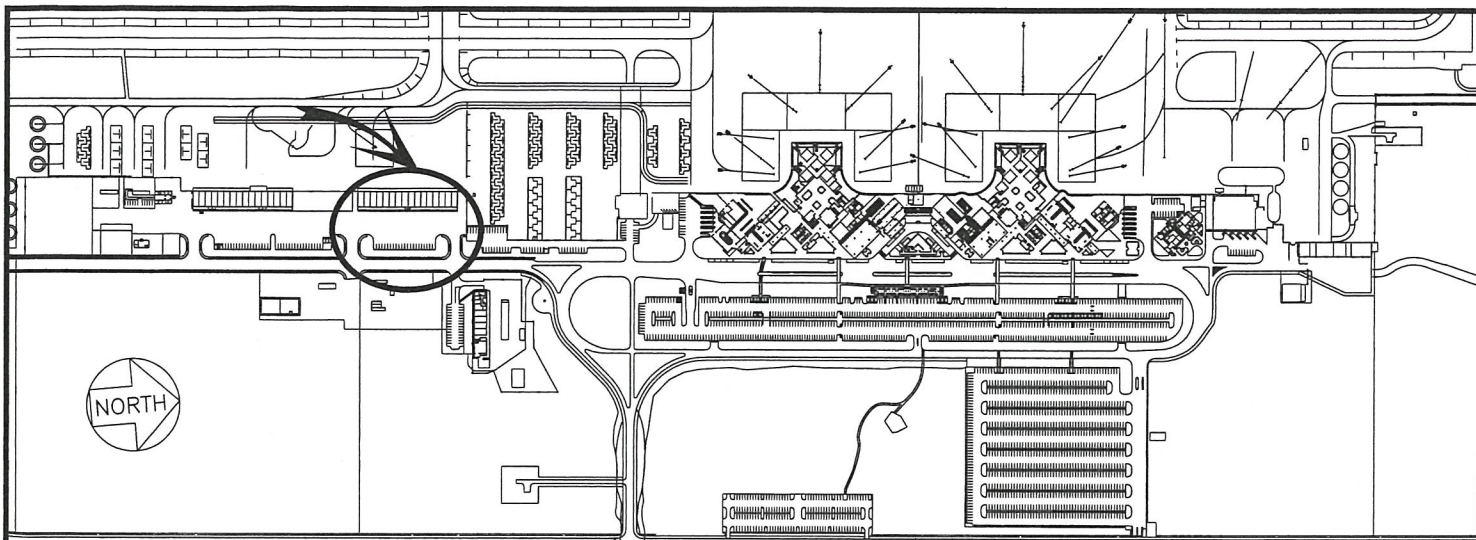


FORD N. FUCHIGAMI
Director of Transportation

APPROVED FOR SUBMITTAL:

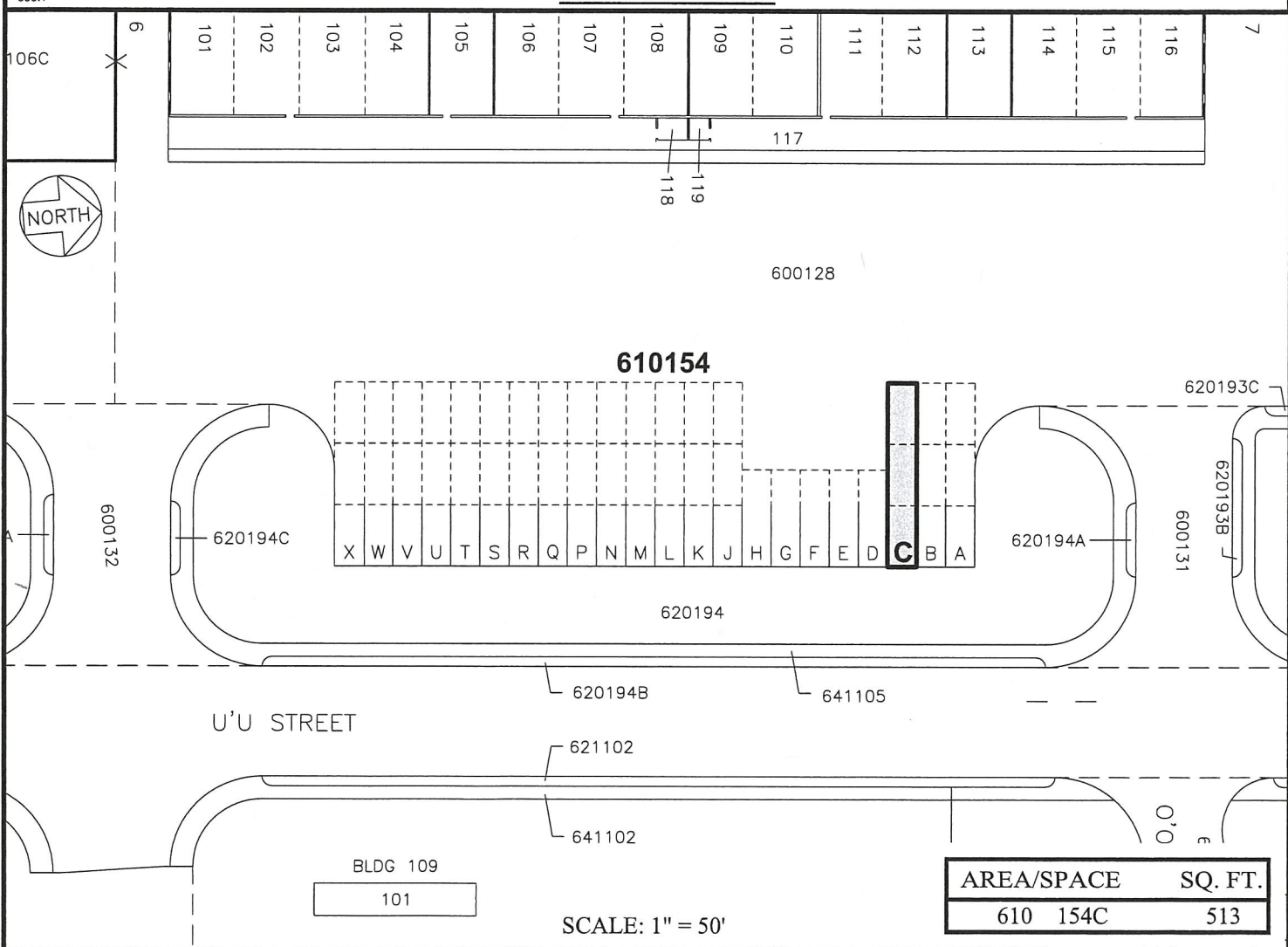


SUZANNE D. CASE
Chairperson and Member



LOCATION PLAN

600:1



DATE : AUGUST 2017

EXHIBIT: **A**



Airports Division

**AIR CARGO
VEHICLE PARKING STALL**

610154C
PLATS C1, 39, 59