



**STATE OF HAWAII**  
**DEPARTMENT OF TRANSPORTATION**  
869 PUNCHBOWL STREET  
HONOLULU, HAWAII 96813-5097

Board of Land and  
Natural Resources  
State of Hawai'i  
Honolulu, Hawai'i

ISSUANCE OF A REVOCABLE PERMIT  
FOR PARKING AND STORAGE OF VEHICLES  
HAWAII INDUSTRIAL SERVICES, LTD.  
DANIEL K. INOUE INTERNATIONAL AIRPORT  
TAX MAP KEY: (1) 1-1-04: 008 (PORTION)

O'AHU

APPLICANT / LESSEE:

Hawaii Industrial Services, Ltd. (HIS, Ltd.), whose mailing address is  
3049 Ualena Street, Suite 709, Honolulu, Hawai'i 96819.

LEGAL REFERENCE:

Section 171-55, Hawai'i Revised Statutes.

LOCATION AND TAX MAP KEY:

A portion of Daniel K. Inouye International Airport, Island of O'ahu, State of Hawai'i,  
identified by Tax Map Key: 1<sup>st</sup> Division, 1-1-04: 008 (Portion).

AREA:

Area/Space No. 005-107A, containing an area of approximately 1,160 square feet,  
as shown and delineated on the attached map labeled Exhibit "A".

ZONING:

State Land Use District: Urban  
City and County of Honolulu: I-2 (Industrial)

LAND TITLE STATUS:

Non-ceded – Direct purchase from private land owner.  
DHHL 30% entitlement lands pursuant to the Hawai'i State Constitution: YES \_\_\_ NO X

BLNR – ISSUANCE OF A REVOCABLE PERMIT FOR PARKING AND STORAGE OF VEHICLES, HAWAII INDUSTRIAL SERVICES, LTD.

Page 2

CURRENT USE STATUS:

Land presently encumbered by Governor’s Executive Order No. 3894, setting aside a portion of Daniel K. Inouye International Airport under the control and management of the Department of Transportation, Airports Division, State of Hawai‘i (DOTA) for Airport Purposes.

The DOTA acquired the subject property, together with most of the remaining properties (except one) along the ocean (makai) side of Ualena Street, between Lagoon Drive and Paiea Street, in the mid-1990’s from Loyalty Enterprises, Ltd.

CHARACTER OF USE:

HIS, Ltd. will use the space for parking and storage of vehicles at Daniel K. Inouye International Airport.

COMMENCEMENT DATE:

Upon execution of the revocable permit.

MONTHLY RENTAL:

\$548.10 (based upon a rental rate of \$5.67 per square foot, per annum for improved, unpaved land, as published in the DOTA Schedule of Rates and Charges).

SECURITY DEPOSIT:

Three (3) times the monthly rental in effect.

DCCA VERIFICATION:

Place of business registration confirmed:	YES <u>X</u>	NO _____
Registered business name confirmed:	YES <u>X</u>	NO _____
Good standing confirmed:	YES <u>X</u>	NO _____

CHAPTER 343, HRS - ENVIRONMENTAL ASSESSMENT:

Pursuant to Section 11-200-8(a), Environmental Impact Statement Rules of the Department of Health, State of Hawai‘i, this disposition is exempt from requirements regarding preparation of an environmental assessment, negative declaration, or environmental impact statement as required by Chapter 343, Hawai‘i Revised Statutes, as amended, relating to Environmental Impact Statements, because the proposed action falls

BLNR – ISSUANCE OF A REVOCABLE PERMIT FOR PARKING AND STORAGE OF VEHICLES, HAWAII INDUSTRIAL SERVICES, LTD.

Page 3

within Exemption Class #1, Comprehensive Exemption List for the State of Hawai'i, Department of Transportation, dated November 15, 2000, as approved by the Environmental Quality Council. Exemption Class #1 covers operations, repairs, or maintenance of existing structures, facilities, equipment, or topographical features involving negligible or no expansion or change of use beyond that previously existing.

The DOTA consulted with the U.S. Federal Aviation Administration as to the appropriateness of the citation of the Environmental Exemption Class from the Comprehensive list for the Department of Transportation dated November 15, 2000. The FAA concurred on the appropriateness.

REMARKS:

In accordance with Section 171-55, HRS, relating to Permits, the Department of Transportation proposes to issue a month-to-month revocable permit to HIS, Ltd., to use Area/Space No. 005-107A for parking and storage of vehicles at Daniel K. Inouye International Airport.

RECOMMENDATION:

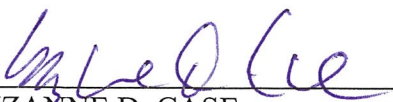
That the Board authorize the Department of Transportation to issue a month-to-month revocable permit to HIS, Ltd., subject to: (1) terms and conditions herein outlined, which are by reference incorporated herein; (2) such additional terms and conditions as may be prescribed by the Director of Transportation to best serve the interests of the State.

Respectfully submitted,

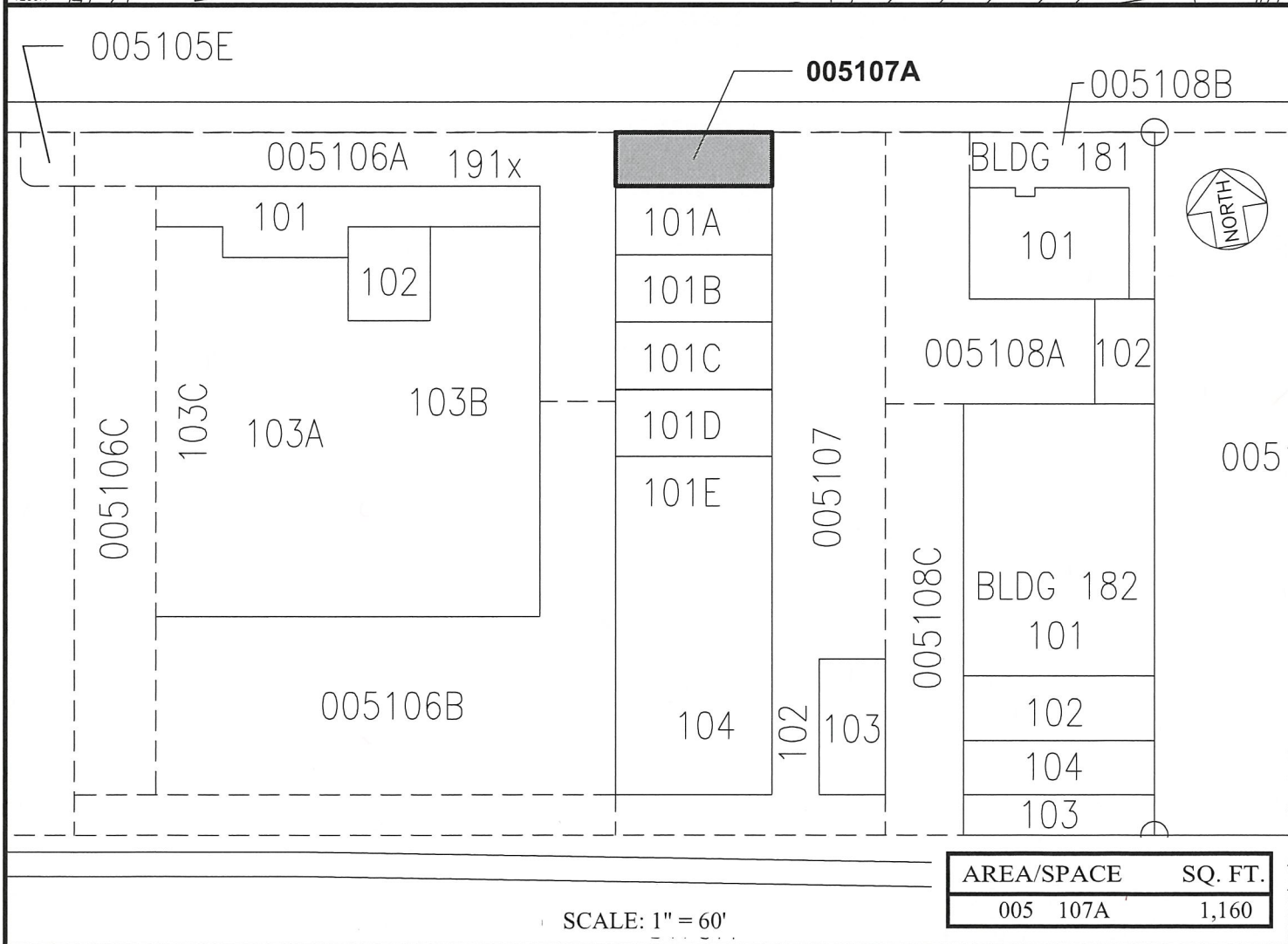
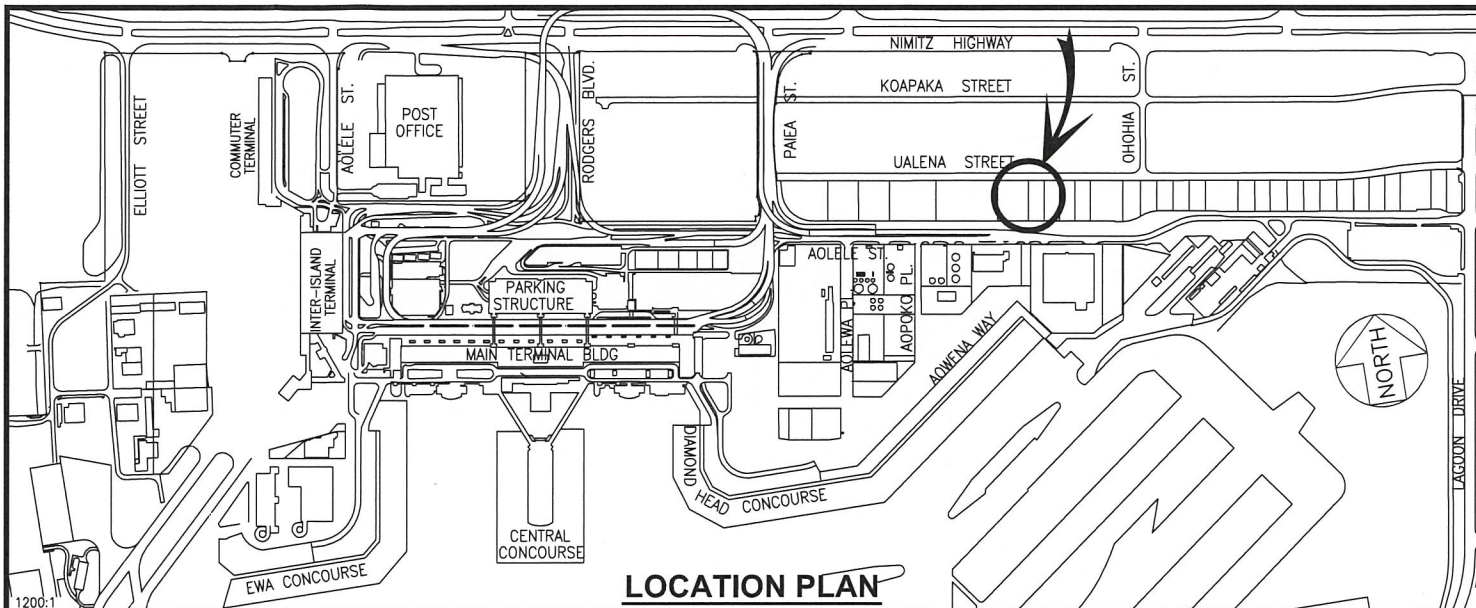


JADE T. BUTAY  
Interim Director of Transportation

APPROVED FOR SUBMITTAL:



SUZANNE D. CASE  
Chairperson and Member



RP-8692	DATE : JANUARY 2018	EXHIBIT: <b>A</b>
Airports Division	HAWAII INDUSTRIAL SERVICES, LTD.	3069 UALENA ST.
		005107A
		PLAT 16

**DANIEL K. INOUE INTERNATIONAL AIRPORT**