

STATE OF HAWAII
DEPARTMENT OF TRANSPORTATION
869 PUNCHBOWL STREET
HONOLULU, HAWAII 96813-5097

JADE T. BUTAY
DIRECTOR

Deputy Directors
ROY CATALANI
ROSS M. HIGASHI
EDWIN H. SNIFFEN
DARRELL T. YOUNG

IN REPLY REFER TO:

Board of Land and
Natural Resources
State of Hawai'i
Honolulu, Hawai'i

ISSUANCE OF A REVOCABLE PERMIT FOR AN AREA OF PAVED, IMPROVED
LAND TO PARK A STORAGE CONTAINER FOR AERIAL MAPPING EQUIPMENT
GROUND IMAGING, INC.
KALAELOA AIRPORT
TAX MAP KEY: (1) 9-1-13: PORTION OF 32

O'AHU

REQUEST:

Issuance of a Revocable Permit for an area of paved, improved land to park a storage container for aerial mapping equipment to Ground Imaging, Inc., situated at Kalaeloa Airport.

LEGAL REFERENCE:

Section 171-55, Hawai'i Revised Statutes (HRS).

APPLICANT:

Ground Imaging, Inc., whose mailing address is 1843 Commerce Drive, Suite 110, South Bend, Indiana 46628.

LOCATION AND TAX MAP KEY:

A portion of Kalaeloa Airport, Kapolei, Island of O'ahu, State of Hawai'i, identified by Tax Map Key: 1st Division, 9-1-13: portion of 32

AREA:

Area/Space No. 800-105, containing an area of approximately 750 square feet, as shown and delineated on the attached map labeled Exhibit "A".

ITEM M-7

BLNR – ISSUANCE OF A REVOCABLE PERMIT FOR AN AREA OF PAVED, IMPROVED
LAND TO PARK A STORAGE CONTAINER FOR AERIAL MAPPING EQUIPMENT
GROUND IMAGING, INC.

PAGE 2

ZONING:

State Land Use District: Urban
City and County of Honolulu LUO: P-2 (To be rezoned in the future)

LAND TITLE STATUS:

Non-ceded - Section 5(a) lands of the Hawai'i Admission Act
DHHL 30% entitlement lands pursuant to Hawai'i Admission Act YES ____ NO X

CURRENT USE STATUS:

Land presently encumbered by Governor's Executive Order No. 3861, setting aside
Kalaheo Airport under the control and management of the Department of Transportation,
Airports Division (DOTA), State of Hawai'i, for Airport Purposes.

CHARACTER OF USE:

Area of paved, improved land to park a storage container for aerial mapping equipment.

COMMENCEMENT DATE:

To be determined by the Director of Transportation at a later date.

MONTHLY RENTAL:

\$201.25 (as determined from the DOTA schedule of rates and charges established by
appraisal of Airports property statewide)

SECURITY DEPOSIT:

Three (3) times the monthly rental in effect.

CHAPTER 343, HRS - ENVIRONMENTAL ASSESSMENT:

The subject land area is covered by the Final Environmental Assessment for the Kalaheo
Airfield Development Plan Improvements, State Project No. AO5011-02 dated June 2010.
This Environmental Assessment was prepared by Wilson Okamoto Corp. for the State of
Hawai'i, Department of Transportation, Airports Division, in part to evaluate the
environmental effects of the recommended Kalaheo Airfield Master Plan to meet existing
and forecast general aviation demands.

BLNR – ISSUANCE OF A REVOCABLE PERMIT FOR AN AREA OF PAVED, IMPROVED
LAND TO PARK A STORAGE CONTAINER FOR AERIAL MAPPING EQUIPMENT
GROUND IMAGING, INC.

PAGE 3

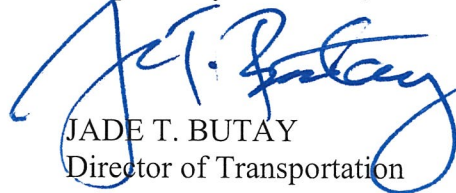
REMARKS:

The issuance of a revocable permit to Ground Imaging, Inc., for an area of paved, improved land to park a storage container for aerial mapping equipment at Kalaeloa Airport complies with Chapter 343, Exemption Class 1.D.10 as a continuing aeronautical use, and is in accordance with Section 171-55 HRS, relating to Permits.

RECOMMENDATION:

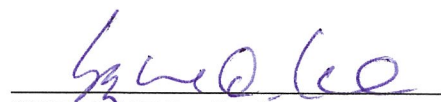
That the Board authorize the Department of Transportation to issue a month-to-month revocable permit to Ground Imaging, Inc., subject to: (1) terms and conditions herein outlined, which are by reference incorporated herein; and (2) such additional terms and conditions as may be prescribed by the Director of Transportation to best serve the interests of the State.

Respectfully submitted,

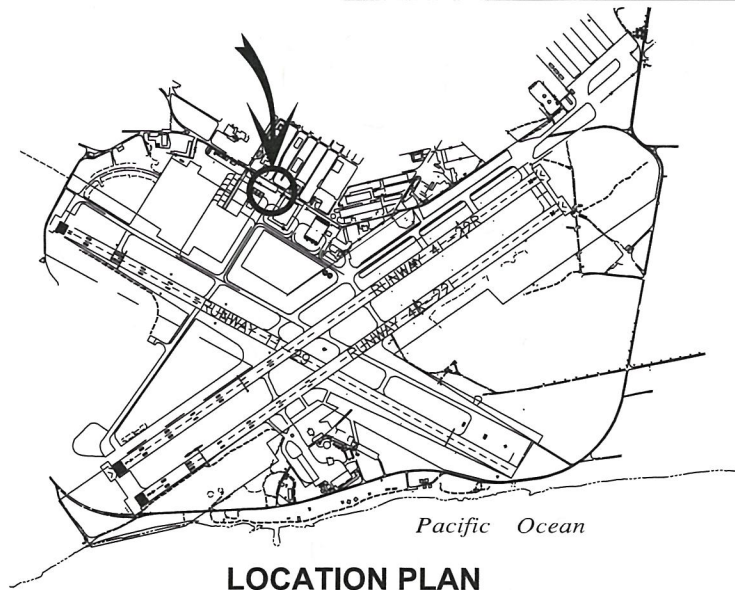


JADE T. BUTAY
Director of Transportation

APPROVED FOR SUBMITTAL:

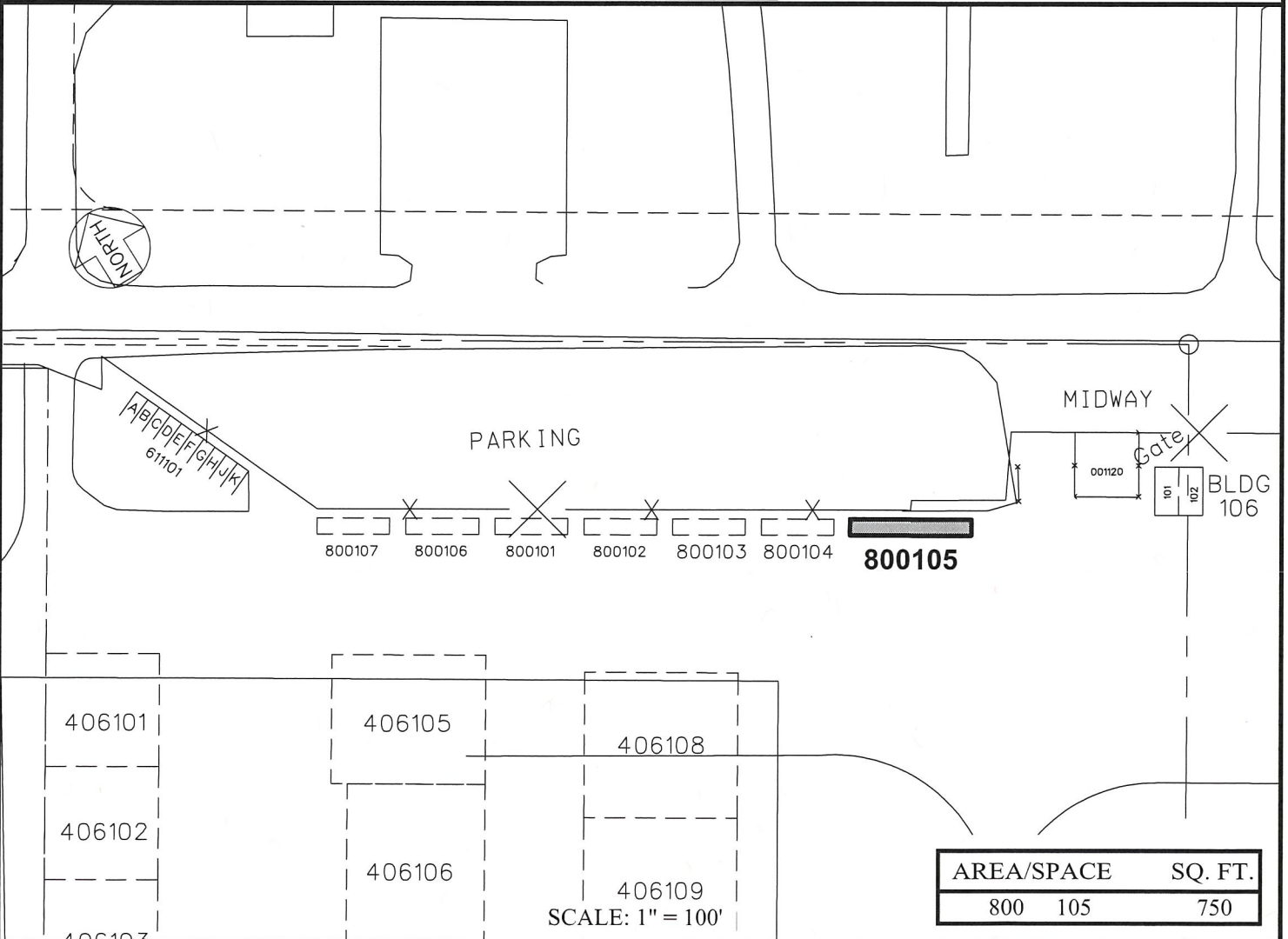


SUZANNE D. CASE
Chairperson and Member



3000:1

LOCATION PLAN



AREA/SPACE	SQ. FT.
800 105	750

RP-8723

DATE : APRIL 2018

EXHIBIT: **A**



Airports Division

GROUND IMAGING, INC.

LOT AREA

800105

KALAELOA AIRPORT

N:\AIRPORTS\JRF_Kalaeloa\CAD\PM\jrf_800105-01.dwg