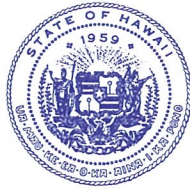


DAVID Y. IGE
GOVERNOR



STATE OF HAWAII
DEPARTMENT OF TRANSPORTATION
869 PUNCHBOWL STREET
HONOLULU, HAWAII 96813-5097

JADE T. BUTAY
DIRECTOR

Deputy Directors
ROY CATALANI
ROSS M. HIGASHI
EDWIN H. SNIFFEN
DARRELL T. YOUNG

IN REPLY REFER TO:

Board of Land and
Natural Resources
State of Hawai'i
Honolulu, Hawai'i

ISSUANCE OF A REVOCABLE PERMIT FOR AIRCRAFT PARKING
GROUND IMAGING, INC.
KALAELOA AIRPORT
TAX MAP KEY: (1) 9-1-13: PORTION OF 32

O'AHU

REQUEST:

Issuance of a Revocable Permit for Aircraft Parking (Parking Permit) to
Ground Imaging, Inc., situated at Kalaeloa Airport.

LEGAL REFERENCE:

Section 171-55, Hawai'i Revised Statutes (HRS).

APPLICANT:

Ground Imaging, Inc., whose mailing address is 1843 Commerce Drive, Suite 110,
South Bend, Indiana, 46628.

LOCATION AND TAX MAP KEY:

A portion of Kalaeloa Airport, Kapolei, Island of O'ahu, State of Hawai'i, identified by
Tax Map Key: 1st Division, 9-1-13: portion of 32

AREA:

Area/Space No. 405-135, containing an area of approximately 849 square feet,
Area/Space No. 405-138, containing an area of approximately 849 square feet,
Area/Space No. 405-139, containing an area of approximately 849 square feet, and
Area/Space No. 405-140, containing an area of approximately 849 square feet,
as shown and delineated on the attached map labeled Exhibit "A".

ITEM M-3

BLNR – ISSUANCE OF A REVOCABLE PERMIT FOR AIRCRAFT PARKING
GROUND IMAGING, INC.

Page 2

ZONING:

State Land Use District: Urban
City and County of Honolulu LUO: P-2 (To be rezoned in the future)

LAND TITLE STATUS:

Non-ceded - Section 5(a) lands of the Hawai‘i Admission Act
DHHL 30% entitlement lands pursuant to Hawai‘i Admission Act YES ___ NO X

CURRENT USE STATUS:

Land presently encumbered by Governor’s Executive Order No. 3861, setting aside
Kalaeloa Airport under the control and management of the Department of Transportation,
Airports Division (DOTA), State of Hawai‘i, for Airport Purposes.

CHARACTER OF USE:

Aircraft tie-down (1954 Piper PA-23-160, Tail No. N-4933A)
Aircraft tie-down (1968 Piper PA-31-300, Tail No. N-3949W)
Aircraft tie-down (2000 Aero Commander 500, Tail No. N-500SJ)
Aircraft tie-down (1964 Piper PA-23-250, Tail No. N-5541Y)

COMMENCEMENT DATE:

To be determined by the Director of Transportation at a later date.

MONTHLY RENTAL:

\$216.00 (as determined from the DOTA schedule of rates and charges established by
appraisal of Airports property statewide)

SECURITY DEPOSIT:

Three (3) times the monthly rental in effect.

CHAPTER 343, HRS - ENVIRONMENTAL ASSESSMENT:

The subject land area is covered by the Final Environmental Assessment for the Kalaeloa
Airfield Development Plan Improvements, State Project No. AO5011-02 dated June 2010.
This Environmental Assessment was prepared by Wilson Okamoto Corp. for the State of
Hawai‘i, Department of Transportation, Airports Division, in part to evaluate the
environmental effects of the recommended Kalaeloa Airfield Master Plan to meet existing
and forecast general aviation demands.

BLNR – ISSUANCE OF A REVOCABLE PERMIT FOR AIRCRAFT PARKING
GROUND IMAGING, INC.

Page 3

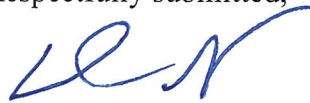
REMARKS:

The issuance of a Parking Permit to Ground Imaging, Inc., at Kalaeloa Airport complies with Chapter 343, Exemption Class 1.D.10 as a continuing aeronautical use, and is in accordance with Section 171-55 HRS, relating to Permits.


RECOMMENDATION:

That the Board authorize the Department of Transportation to issue a month-to-month Parking Permit to Ground Imaging, Inc., subject to: (1) terms and conditions herein outlined, which are by reference incorporated herein; and (2) such additional terms and conditions as may be prescribed by the Director of Transportation to best serve the interests of the State.

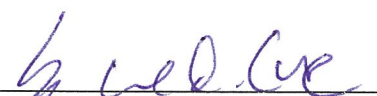
Respectfully submitted,



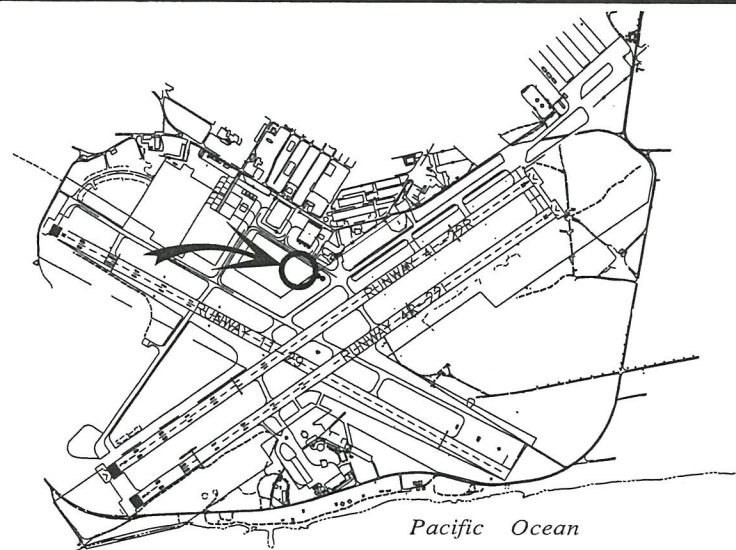
JADE T. BUTAY

 Director of Transportation

APPROVED FOR SUBMITTAL:



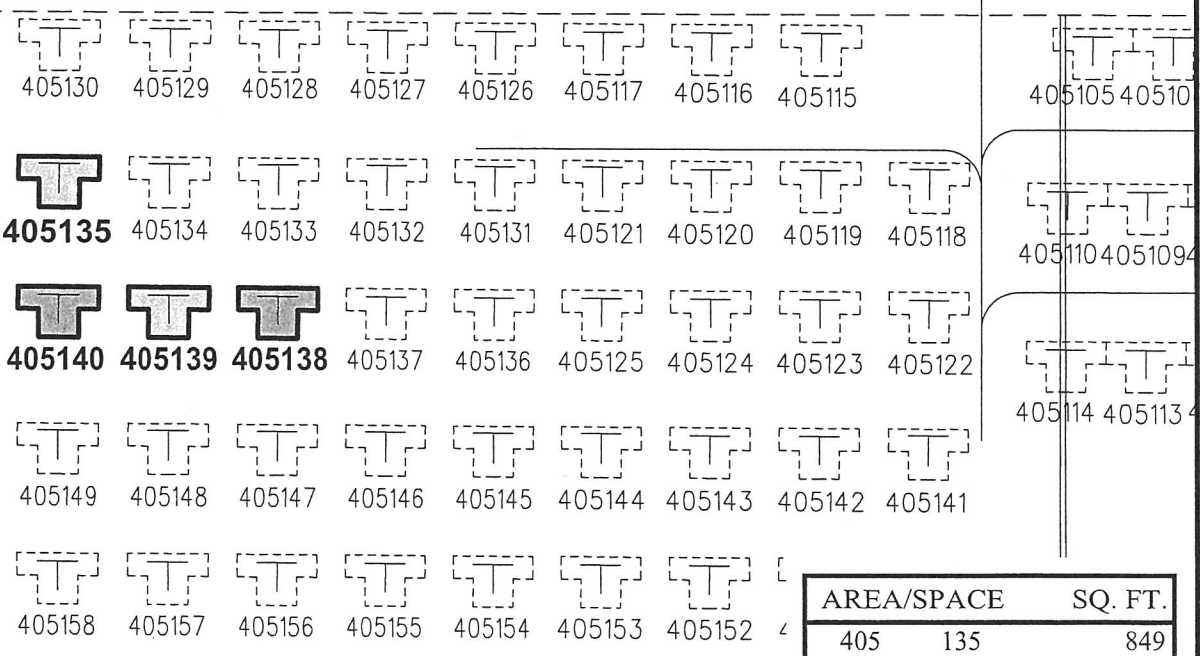
SUZANNE D. CASE
Chairperson and Member



LOCATION PLAN

3000:1

TAXIRROUTE "B4"



PAVEMENT

CONCRETE

500101

SCALE: 1" = 100'

AREA/SPACE	SQ. FT.
405 135	849
405 138	849
405 139	849
405 140	849

PP-18-0017

DATE : MAY 2018

EXHIBIT: **A**



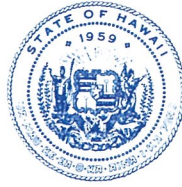
Airports Division

GROUND IMAGING, INC.

TIE-DOWN AREA

405135
405138-140

DAVID Y. IGE
GOVERNOR



STATE OF HAWAII
DEPARTMENT OF TRANSPORTATION
AIRPORTS DIVISION
400 RODGERS BOULEVARD, SUITE 700
HONOLULU, HAWAII 96819-1880

JADE T. BUTAY
DIRECTOR


Deputy Directors
ROY CATALANI
ROSS M. HIGASHI
EDWIN H. SNIFFEN
DARRELL T. YOUNG

IN REPLY REFER TO:

AIR-PM
18.0552

July 31, 2018

TO: (1) JADE T. BUTAY, DIRECTOR
(2) SUZANNE D. CASE, DIRECTOR - DLNR
C/O DARLENE FERREIRA
(3) ROSS SMITH, AIR-PM

FROM: ROSS M. HIGASHI 
DEPUTY DIRECTOR - AIRPORTS

SUBJECT ISSUANCE OF A REVOCABLE PERMIT FOR AIRCRAFT PARKING
GROUND IMAGING, INC.
KALAELOA AIRPORT
TAX MAP KEY: (1) 9-1-13: PORTION OF 32

Attached is the subject submittal for your approval. Please have submittal placed on the next Land Board agenda.

If there are any questions, please call Ms. Amy Fujioka at 838-8683.

Attachment