



STATE OF HAWAII
DEPARTMENT OF TRANSPORTATION
869 PUNCHBOWL STREET
HONOLULU, HAWAII 96813-5097

JADE T. BUTAY
DIRECTOR

Deputy Directors
ROY CATALANI
ROSS M. HIGASHI
EDWIN H. SNIFFEN
DARRELL T. YOUNG

IN REPLY REFER TO:

Board of Land and
Natural Resources
State of Hawai'i
Honolulu, Hawai'i

ISSUANCE OF A REVOCABLE PERMIT FOR STORAGE OF
GROUND SERVICE EQUIPMENT FOR AIRLINE OPERATIONS
HAWAIIAN AIRLINES, INC.
DANIEL K. INOUE INTERNATIONAL AIRPORT
TAX MAP KEY: (1) 1-1-003: 001 (PORTION)

O'AHU

LEGAL REFERENCE:

Section 171-55, Hawai'i Revised Statutes (HRS).

APPLICANT:

Hawaiian Airlines, Inc. (Hawaiian Airlines), whose mailing address is 3375 Koapaka St.,
Suite G350, Honolulu, Hawai'i 96819.

LOCATION:

Portion of Daniel K. Inouye International Airport, Island of Oahu, State of Hawaii,
identified by Tax Map Key: 1st Division, 1-1-003: 001 (Portion).

AREA:

Area/Space No. 004-113, containing an area of approximately 5,625 square feet of
improved, paved land; and Area/Space No. 004-114, containing an area of approximately
12,352 square feet of improved, unpaved land, as shown and delineated on the attached
map labeled Exhibit "A".

ZONING:

State Land Use District: Urban
City and County of Honolulu LUO: Industrial (I-2)

ITEM M-4

BLNR- ISSUANCE OF A REVOCABLE PERMIT FOR STORAGE OF GROUND SERVICE EQUIPMENT FOR AIRLINE OPERATIONS
HAWAIIAN AIRLINES, INC.
Page 2

LAND TITLE STATUS:

Non-ceded - Section 5(a) lands of the Hawai'i Admission Act
DHHL 30% entitlement lands pursuant to Hawai'i Admission Act YES ___ NO X

CURRENT USE STATUS:

Land presently encumbered by Governor's Executive Order No. 3201, dated June 8, 1983, setting aside 3,152.177 acres designated as Daniel K. Inouye International Airport under the control and management of the State of Hawai'i, Department of Transportation, Airports Division (DOTA) for Airport Purposes.

CHARACTER OF USE:

Hawaiian Airlines will use the spaces to store ground service equipment as part of their Signatory Airline Carrier Operations at Daniel K. Inouye International Airport.

COMMENCEMENT DATE:

To be determined by the Director of Transportation at a later date.

MONTHLY RENTAL:

\$8,742.57 (based upon a rate of \$6.20 per square foot, per annum for improved, paved land and \$5.67 per square foot, per annum for improved, unpaved land at the Airport, as determined from the Airports Division Schedule of Rates and Charges for Airport properties statewide).

SECURITY DEPOSIT:

Three (3) times the monthly rental in effect

DCCA VERIFICATION:

Place of business registration confirmed:	YES <u>X</u>	NO ___
Registered business name confirmed:	YES <u>X</u>	NO ___
Good standing confirmed:	YES <u>X</u>	NO ___

CHAPTER 343, HRS - ENVIRONMENTAL ASSESSMENT:

Pursuant to Section 11-200-8(a), Environmental Impact Statement Rules of the Department of Health, State of Hawai'i, this disposition is exempt from requirements regarding preparation of an environmental assessment, negative declaration, or environmental impact statement as required by Chapter 343, Hawai'i Revised Statutes, as

BLNR- ISSUANCE OF A REVOCABLE PERMIT FOR STORAGE OF GROUND SERVICE EQUIPMENT FOR AIRLINE OPERATIONS
HAWAIIAN AIRLINES, INC.
Page 3

amended, relating to Environmental Impact Statements, because the proposed action falls within Exemption Class #1, Comprehensive Exemption List for the State of Hawai'i, Department of Transportation, dated November 15, 2000, as approved by the Environmental Quality Council. Exemption Class #1 covers operations, repairs, or maintenance of existing structures, facilities, equipment, or topographical features involving negligible or no expansion or change of use beyond that previously existing.

The DOTA consulted with the U.S. Federal Aviation Administration as to the appropriateness of the citation of the Environmental Exemption Class from the Comprehensive list for the Department of Transportation dated November 15, 2000. The FAA concurred on the appropriateness.

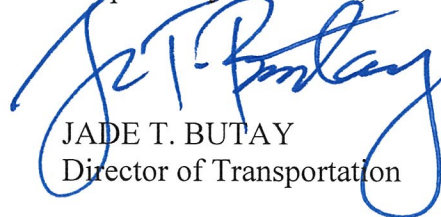
REMARKS:

In accordance with Section 171-55, HRS, relating to Permits, the Department of Transportation proposes to issue a month-to-month revocable permit to Hawaiian Airlines to store ground service equipment as part of its Signatory Airline Carrier Operations at Daniel K. Inouye International Airport.

RECOMMENDATION:

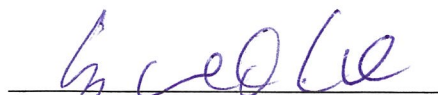
That the Board authorize the Department of Transportation to issue a month-to-month revocable permit to Hawaiian Airlines, Inc., subject to: (1) terms and conditions herein outlined, which are by reference incorporated herein; and (2) such additional terms and conditions as may be prescribed by the Director of Transportation to best serve the interests of the State.

Respectfully submitted,

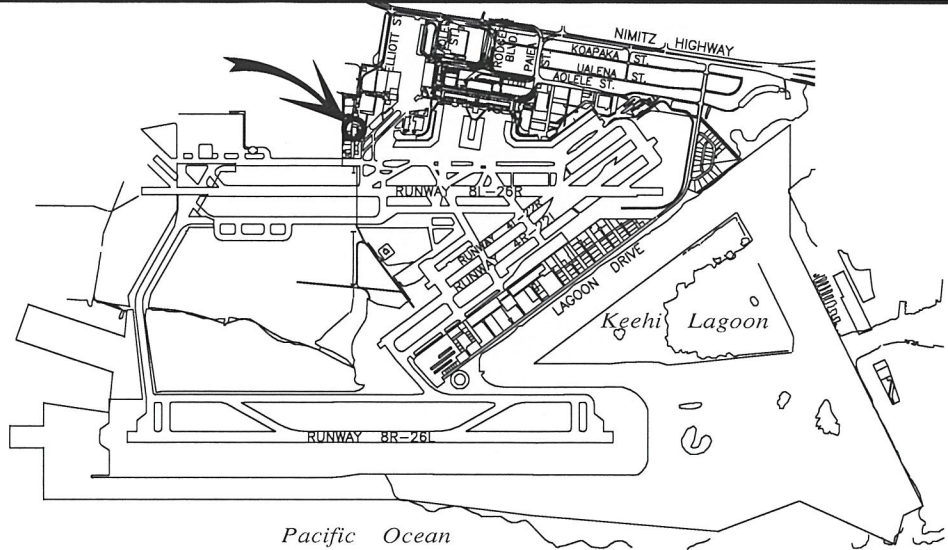


JADE T. BUTAY
Director of Transportation

APPROVED FOR SUBMITTAL:

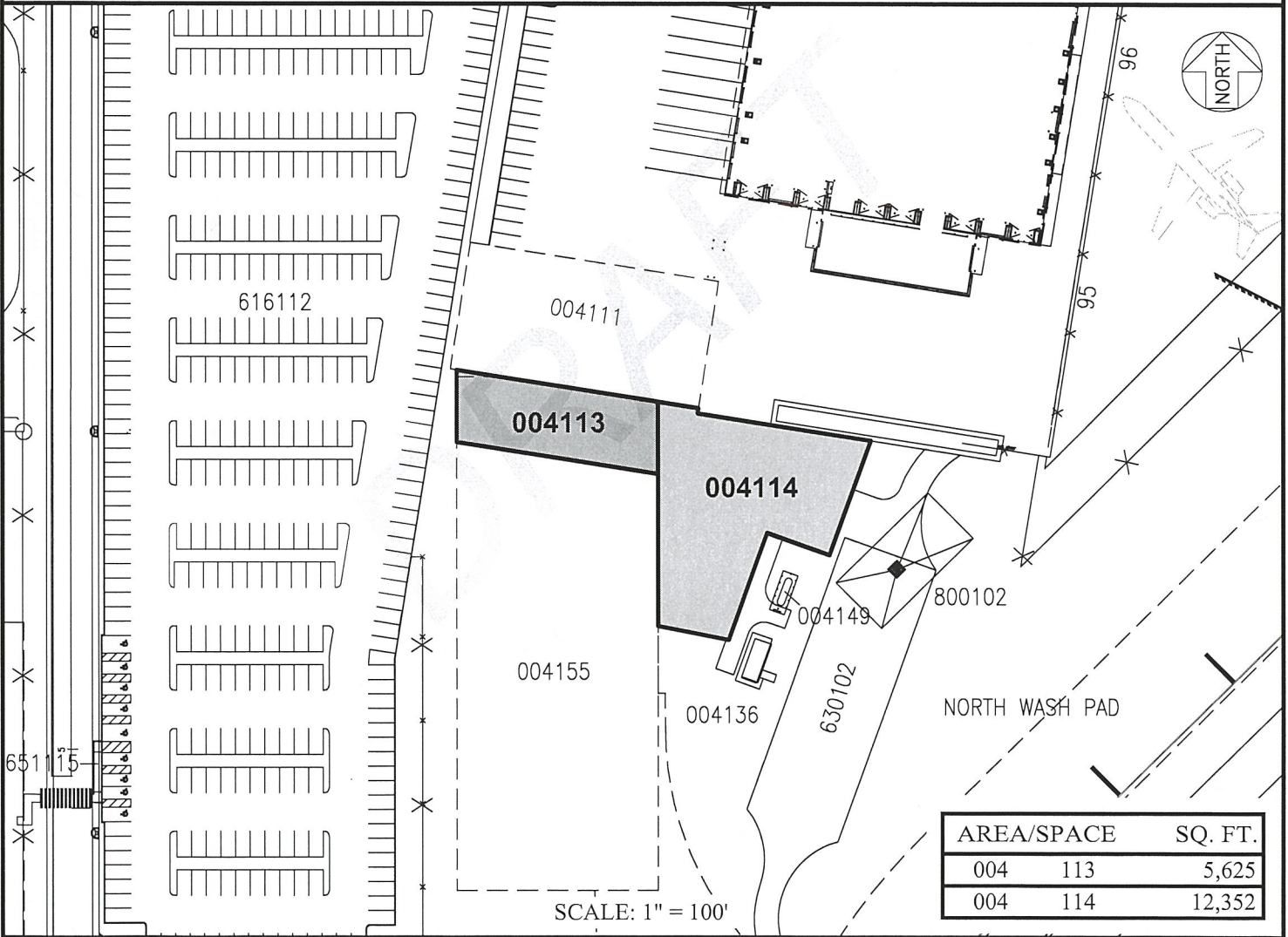


SUZANNE D. CASE
Chairperson and Member



LOCATION PLAN

5000:1



AREA/SPACE	SQ. FT.
004 113	5,625
004 114	12,352

SCALE: 1" = 100'

RP-

DATE : JUNE 2018

EXHIBIT: **A**



HAWAIIAN AIRLINES INC

**STORAGE
INTER-ISLAND
MAINTENANCE AREA**

004113
004114
PLAT 24