

**STATE OF HAWAII**  
**DEPARTMENT OF TRANSPORTATION**  
869 PUNCHBOWL STREET  
HONOLULU, HAWAII 96813-5097

IN REPLY REFER TO:

Board of Land and  
Natural Resources  
State of Hawai'i  
Honolulu, Hawai'i

ISSUANCE OF A REVOCABLE PERMIT FOR EQUIPMENT PARKING  
QANTAS AIRWAYS LIMITED  
DANIEL K. INOUE INTERNATIONAL AIRPORT  
TAX MAP KEY: (1) 1-1-003: 066 (PORTION)

O'AHU

APPLICANT:

Qantas Airways Limited (Qantas), whose business address is 300 Rodgers Boulevard, #53, Honolulu, Hawai'i, 96819.

LEGAL REFERENCE:

Section 171-55, Hawai'i Revised Statutes (HRS).

LOCATION:

Parking facilities in the Ewa Concourse, Daniel K. Inouye International Airport, Island of O'ahu, State of Hawai'i, identified by Tax Map Key: 1st Division, 1-1-003: 066 (Portion).

AREA:

Area/Space No. 611-106A, containing an area of approximately 345 square feet; and Area/Space No. 611-106C, containing an area of approximately 345 square feet, as shown and delineated on the attached map labeled Exhibit A.

ZONING:

State Land Use District: Urban  
City and County of Honolulu LUO: Industrial (I-2)

LAND TITLE STATUS:

Section 5(a) lands of the Hawai'i Admission Act: Ceded  
DHHL 30% entitlement lands pursuant to Hawai'i Admission Act YES  NO

**ITEM M-6**

CURRENT USE STATUS:

Land presently encumbered by Governor’s Executive Order No. 3201, dated June 8, 1983, setting aside 3,152.177 acres designated as Daniel K. Inouye International Airport under the control and management of the State of Hawai‘i, Department of Transportation, Airports Division (DOTA) for Airport Purposes.

CHARACTER OF USE:

Qantas will use the spaces for equipment parking as part of their Signatory Airline Carrier Operations at Daniel K. Inouye International Airport.

COMMENCEMENT DATE:

Upon execution of the revocable permit.

MONTHLY RENTAL:

\$4,261.32 (as determined from the Airports Division Signatory Carriers Rates and Charges, Hawai‘i Airports System, effective July 1, 2018).

The Airports Division Signatory Carriers Rates and Charges, Hawai‘i Airports System for Fiscal Year 2019 is \$74.11 per square foot, per annum.

SECURITY DEPOSIT:

Three (3) times the monthly rent in effect.

DCCA VERIFICATION:

Place of business registration confirmed:	YES <u>X</u>	NO _____
Registered business name confirmed:	YES <u>X</u>	NO _____
Good standing confirmed:	YES <u>X</u>	NO _____

CHAPTER 343, HRS - ENVIRONMENTAL ASSESSMENT:

Pursuant to Section 11-200-8(a), Environmental Impact Statement Rules of the Department of Health, State of Hawai‘i, this disposition is exempt from requirements regarding preparation of an environmental assessment, negative declaration, or environmental impact statement as required by Chapter 343, Hawai‘i Revised Statutes, as amended, relating to Environmental Impact Statements, because the proposed action falls within Exemption Class #1, Comprehensive Exemption List for the State of Hawai‘i, Department of Transportation, dated November 15, 2000, as approved by the Environmental Quality Council. Exemption Class #1 covers operations, repairs, or

BLNR – ISSUANCE OF A REVOCABLE PERMIT FOR EQUIPMENT PARKING  
QANTAS AIRWAYS LIMITED

Page 3

maintenance of existing structures, facilities, equipment, or topographical features involving negligible or no expansion or change of use beyond that previously existing.

The DOTA consulted with the U.S. Federal Aviation Administration as to the appropriateness of the citation of the Environmental Exemption Class from the Comprehensive list for the Department of Transportation dated November 15, 2000. The FAA concurred on the appropriateness.

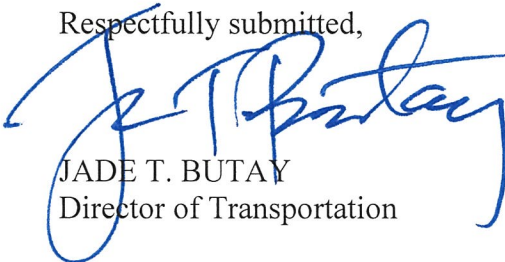
REMARKS:

In accordance with Section 171-55, HRS, relating to Permits, the Department of Transportation proposes to issue a month-to-month revocable permit to Qantas for equipment parking as part of their Signatory Airline Carrier Operations at Daniel K. Inouye International Airport.

RECOMMENDATION:


That the Board authorize the Department of Transportation to issue a month-to-month revocable permit to Qantas subject to: (1) terms and conditions herein outlined, which are by reference incorporated herein; and (2) such additional terms and conditions as may be prescribed by the Director of Transportation to best serve the interests of the State.

Respectfully submitted,



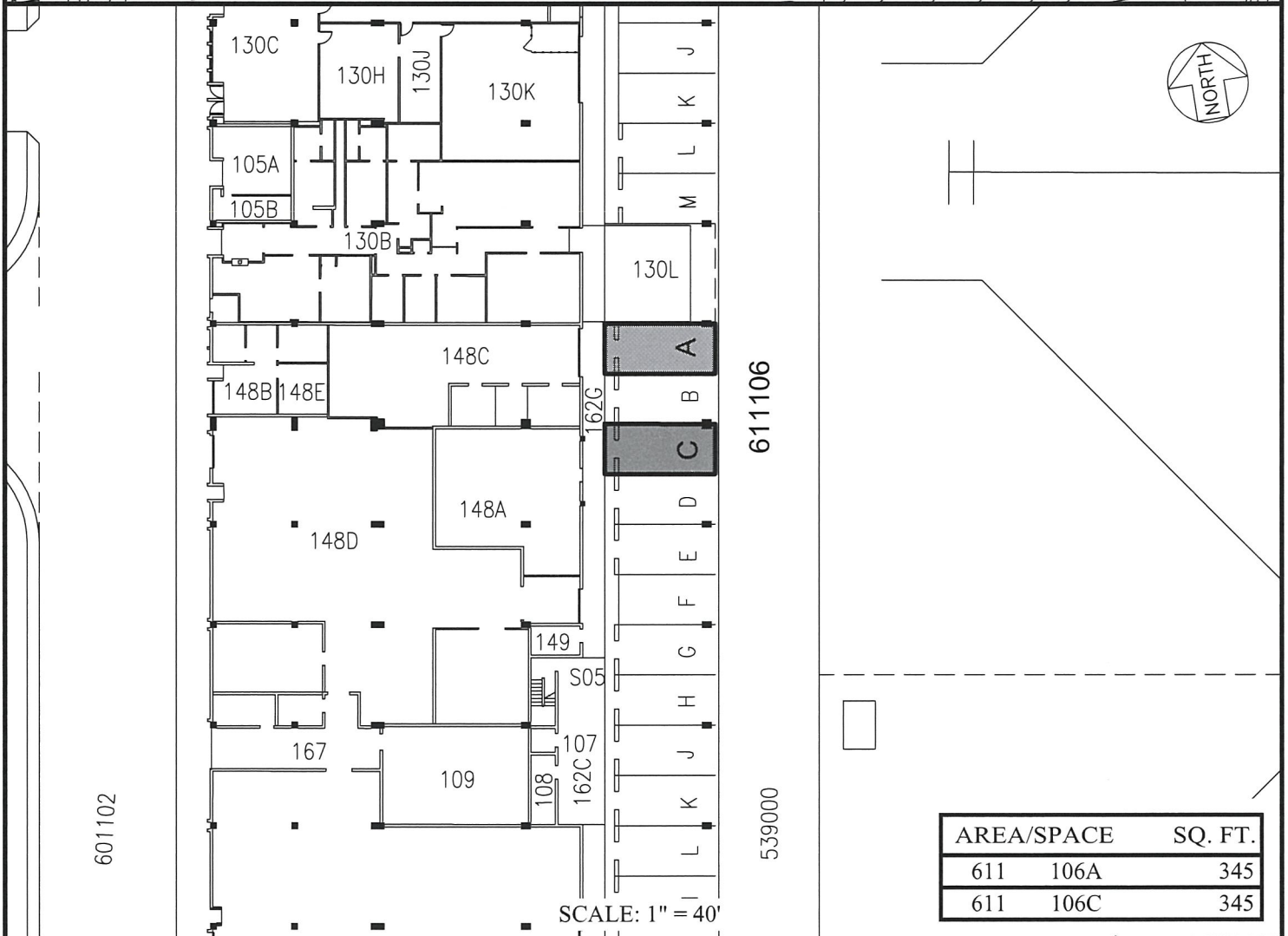
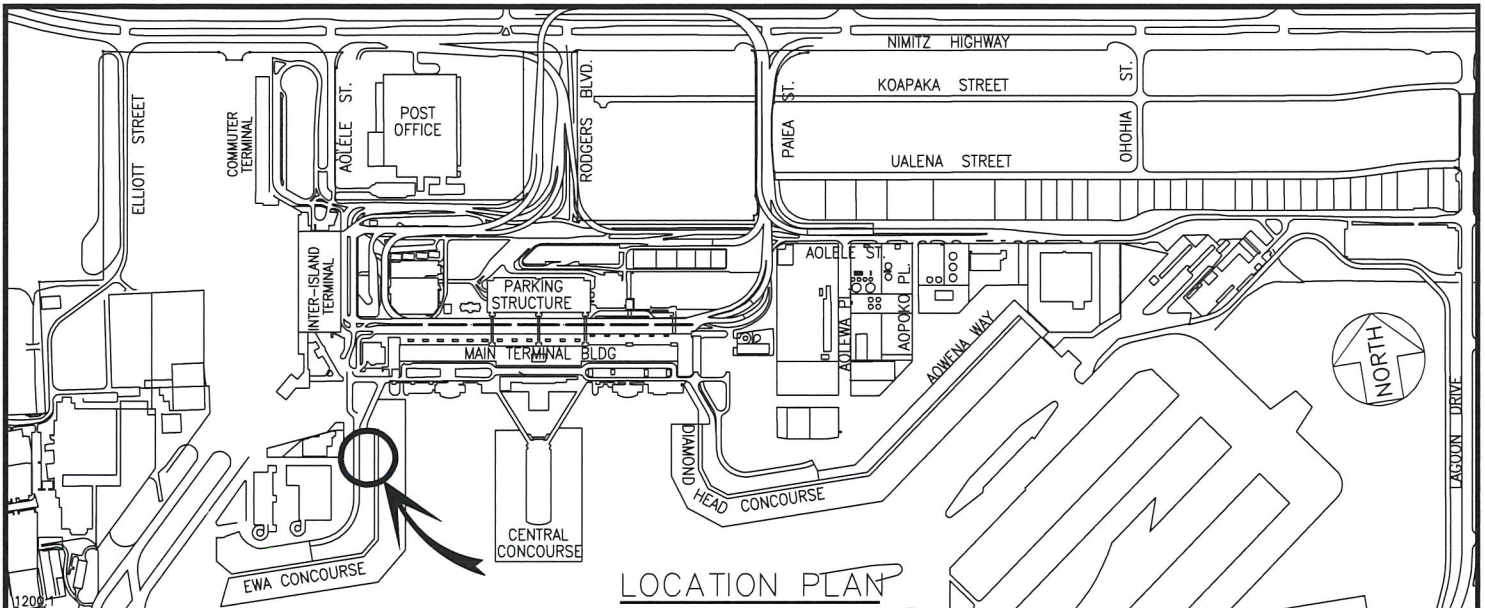
JADE T. BUTAY  
Director of Transportation

APPROVED FOR SUBMITTAL:



---

SUZANNE D. CASE  
Chairperson and Member



AREA/SPACE	SQ. FT.
611 106A	345
611 106C	345

RP-8763

DATE : SEPTEMBER 2018

EXHIBIT: **A**



**QANTAS AIRWAYS LIMITED**

**PARKING FACILITIES  
EWA CONCOURSE  
GROUND LEVEL**

**611106A  
611106C  
PLAT F1**