

DAVID Y. IGE
GOVERNOR



STATE OF HAWAII
DEPARTMENT OF TRANSPORTATION
869 PUNCHBOWL STREET
HONOLULU, HAWAII 96813-5097

JADE T. BUTAY
DIRECTOR

Deputy Directors
ROY CATALANI
ROSS M. HIGASHI
EDWIN H. SNIFFEN
DARRELL T. YOUNG

IN REPLY REFER TO:

Board of Land and
Natural Resources
State of Hawai'i
Honolulu, Hawai'i

ISSUANCE OF A REVOCABLE PERMIT FOR
AIRLINE OPERATIONS AND VEHICLE PARKING AT THE COMMUTER
TERMINAL AND FOR AIRCRAFT TIE-DOWN PARKING
SCHUMAN AVIATION COMPANY LTD.
LĪHU'E AIRPORT
TAX MAP KEY: (4) 3-5-001: PORTION OF 8

KAUA'I

REQUEST:

Issuance of a revocable permit for airline operations and vehicle parking at the commuter terminal and for airline operations and for aircraft tie-down parking to Schuman Aviation Company Ltd. (SAC) at Līhu'e Airport (LIH).

LEGAL REFERENCE:

Sections 171-11 and 171-55, Hawai'i Revised Statutes.

APPLICANT:

Schuman Aviation Company, Ltd. (SAC) whose address is 130 Iolana Place, Honolulu, Hawai'i 96819.

LOCATION AND TAX MAP KEY:

Portion of Līhu'e Airport, Līhu'e, Island of Kaua'i, identified by
Tax Map Key: 4th Division, 3-5-001: Portion of 8.

ITEM M-17

ISSUANCE OF A REVOCABLE PERMIT FOR AIRLINE OPERATIONS AND VEHICLE PARKING AT THE COMMUTER TERMINAL AND FOR AIRCRAFT TIE-DOWN PARKING SCHUMAN AVIATION COMPANY LTD.

Page 2

AREA:

Bldg/Room No. 136-101C, containing an area of approximately 134 square feet, Area/Space No. 611-102A, containing an area of approximately 164 square feet, Area/Space No. 611-102B, containing an area of approximately 187 square feet, and Area/Space No. 408-109, containing an area of approximately 990 square feet.

All Bldg/Room and Area/Space identified are shown and delineated on the attached map labeled Exhibit "A".

ZONING:

State Land Use: Urban
County: Industrial (IG-STP)

LAND TITLE STATUS:

Section 5(a), Hawai'i Admissions Act: Non-Ceded
DHHL, 30% entitlement lands Yes ___ No X

CURRENT USE STATUS:

Airport and Aeronautical purposes.

CHARACTER OF USE:

Space for a podium for passenger check-in at the Līhu'e Commuter Terminal, parking spaces for customers in the commuter terminal parking lot and a tie-down for aircraft.

COMMENCEMENT DATE:

Upon complete execution of the revocable permit.

MONTHLY RENTAL:

\$ 479.43 (as determined from the DOTA schedule of rates and charges established by appraisal of Airports property statewide).

SECURITY DEPOSIT:

\$ 1,438.30, or three times the monthly rental then in effect.

ISSUANCE OF A REVOCABLE PERMIT FOR AIRLINE OPERATIONS AND VEHICLE PARKING AT THE COMMUTER TERMINAL AND FOR AIRCRAFT TIE-DOWN PARKING SCHUMAN AVIATION COMPANY LTD.

Page 3

HOLDOVER TENANCY:

§ 15.98

DCCA VERFICIATION:

Place of business registration confirmed: YES X
Registered business name confirmed: YES X
Good standing confirmed: YES X

CHAPTER 343, HRS - ENVIRONMENTAL ASSESSMENT:

Pursuant to Section 11-200-8(a), Environmental Impact Statement Rules of the Department of Health, State of Hawai'i, this disposition is exempt from requirements regarding preparation of an environmental assessment, negative declaration, or environmental impact statement as required by Chapter 343, Hawai'i Revised Statutes, as amended, relating to Environmental Impact Statements, because the proposed action falls within Exemption Class #1, Comprehensive Exemption List for the State of Hawai'i, Department of Transportation, dated November 15, 2000, as approved by the Environmental Quality Council. Exemption Class #1 covers operations, repairs, or maintenance of existing structures, facilities, equipment, or topographical features involving negligible or no expansion or change of use beyond that previously existing.

The DOTA consulted with the U.S. Federal Aviation Administration as to the appropriateness of the citation of the Environmental Exemption Class from the Comprehensive list for the Department of Transportation dated November 15, 2000. In this case, the FAA concurred on the appropriateness.

REMARKS:

The Department of Transportation (DOT) has no objections to SAC's request for issuance of a revocable permit for aeronautical use in accordance with Sections 171-11 and 171-55, HRS, relating to Public Purposes and Permits, respectively, and therefore, the DOT proposes to issue a month-to-month revocable permit for aircraft parking to SAC, Space Nos. 136-101C, 611-102A, 611-102B and 408-109.

BLNR – ISSUANCE OF A REVOCABLE PERMIT FOR
PARKING AND STORAGE OF RENTAL CAR VEHICLES
ISLAND CARS LLC

Page 3

within Exemption Class #1, Comprehensive Exemption List for the State of Hawai‘i, Department of Transportation, dated November 15, 2000, as approved by the Environmental Quality Council. Exemption Class #1 covers operations, repairs, or maintenance of existing structures, facilities, equipment, or topographical features involving negligible or no expansion or change of use beyond that previously existing.

The DOTA consulted with the U.S. Federal Aviation Administration as to the appropriateness of the citation of the Environmental Exemption Class from the Comprehensive list for the Department of Transportation dated November 15, 2000. In this case, the FAA concurred on the appropriateness.

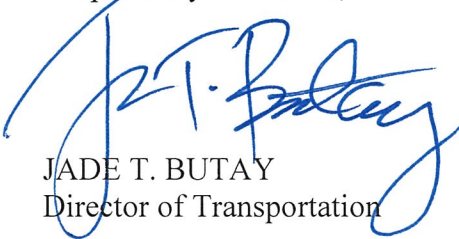
REMARKS:

The DOT has no objections to ICL’s request and therefore, in accordance with Sections 171-11 and 171-55, HRS, relating to Public Purposes and Permits respectively, the DOT proposes to issue a month-to-month revocable permit to ICL, Space No. 820-113A.

RECOMMENDATION:

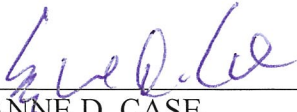
That the Board authorizes the Department of Transportation to issue a revocable permit to ICL, subject to: (1) terms and conditions herein outlined, which are by reference incorporated herein; (2) such other terms and conditions as may be prescribed by the Director of Transportation to best serve the interests of the State.

Respectfully submitted,

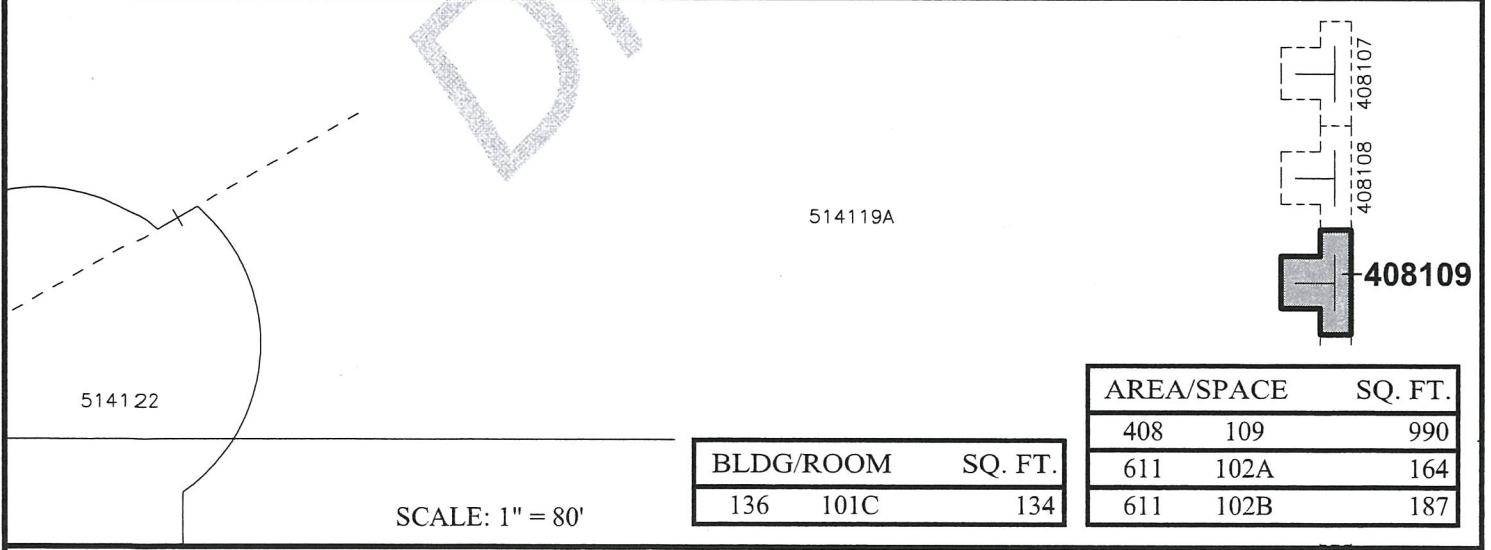
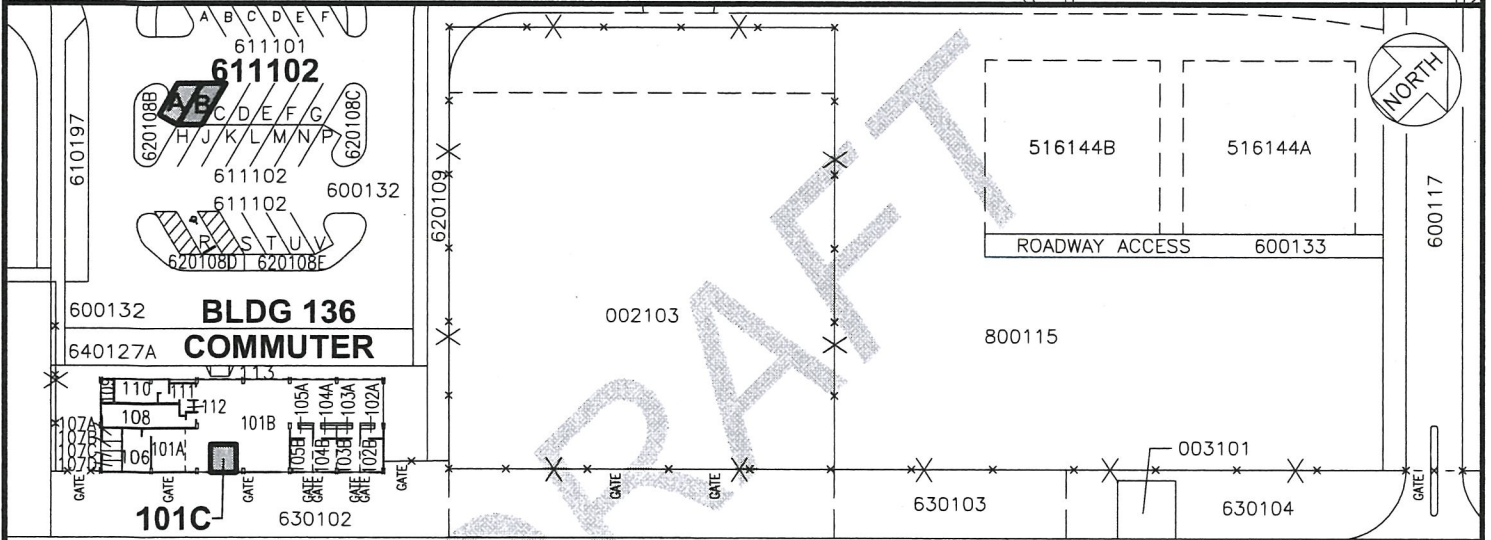
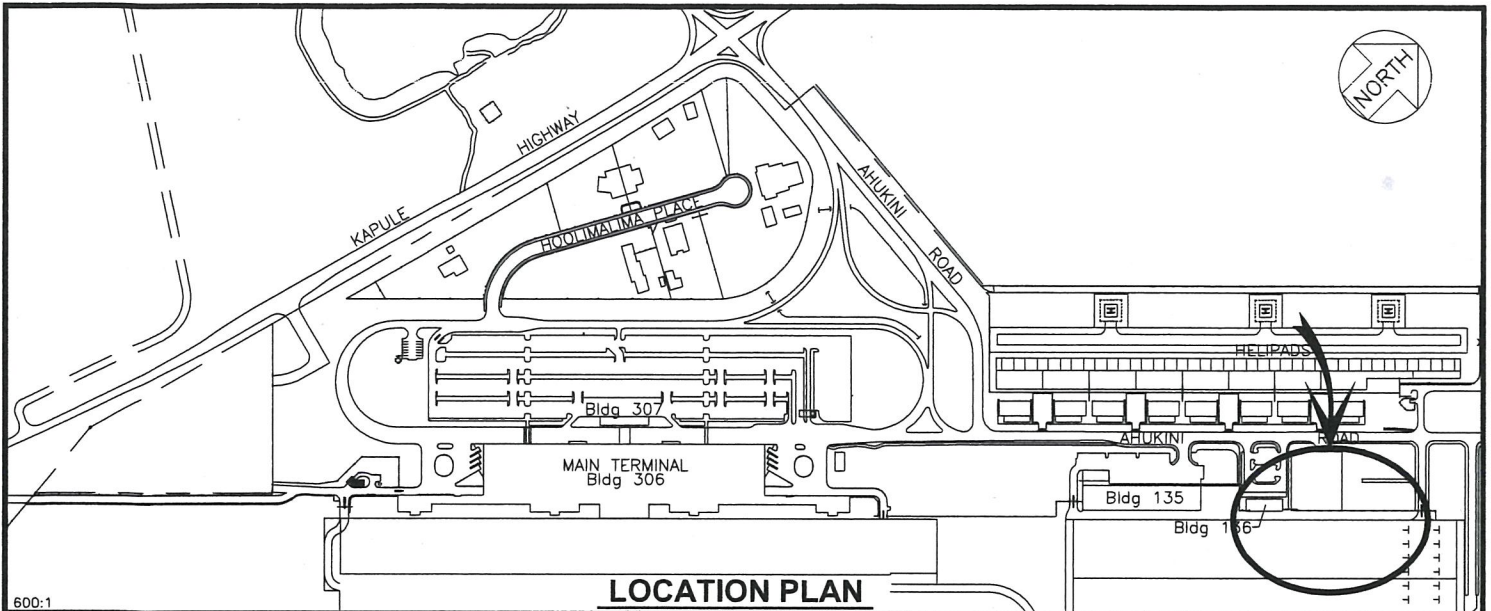


JADE T. BUTAY
Director of Transportation

APPROVED FOR SUBMITTAL:



SUZANNE D. CASE
Chairperson and Member



AREA/SPACE	SQ. FT.
408 109	990
611 102A	164
611 102B	187

BLDG/ROOM	SQ. FT.
136 101C	134

SCALE: 1" = 80'

DRAFT DATE : SEPTEMBER 2018 EXHIBIT: **A**



SCHUMAN AVIATION
COMPANY LTD

COMMUTER BUILDING 136
& TIE-DOWN
GROUND LEVEL

136101C
408109
611102A & B
PLATS A1, B1, 35