

STATE OF HAWAII
DEPARTMENT OF TRANSPORTATION
869 PUNCHBOWL STREET
HONOLULU, HAWAII 96813-5097

JADE T. BUTAY
DIRECTOR

Deputy Directors
LYNN A.S. ARAKI-REGAN
DEREK J. CHOW
ROSS M. HIGASHI
EDWIN H. SNIFFEN

IN REPLY REFER TO:

Board of Land and
Natural Resources
State of Hawai'i
Honolulu, Hawai'i

ISSUANCE OF A REVOCABLE PERMIT FOR SPACE TO PARK FUEL TRUCKS
AND GROUND SERVICE EQUIPMENT
BARBERS POINT AVIATION SERVICES, LLC
KALAELOA AIRPORT
TAX MAP KEYS: (1) 9-1-13: PORTION OF 32 & (1) 9-1-13: PORTION OF 76

O'AHU

REQUEST:

Issuance of a Revocable Permit for space to park fuel trucks and ground service equipment to Barbers Point Aviation Services, LLC, situated at Kalaeloa Airport.

LEGAL REFERENCE:

Section 171-55, Hawai'i Revised Statutes ("HRS").

APPLICANT:

Barbers Point Aviation Services, LLC, whose mailing address is 91-1259 Midway Road, Building 104, Suite 1, Kapolei, Hawai'i 96707.

LOCATION:

Portions of Kalaeloa Airport, Kapolei, Island of O'ahu, State of Hawai'i, identified by Tax Map Keys: 1st Division, 9-1-13: portion of 32 and, 9-1-13: portion of 76.

AREA:

Area/Space No. 406-102, containing an area of approximately 4,900 square feet; and Area/Space No. 406-105, containing an area of approximately 7,600 square feet, as shown and delineated on the attached map labeled Exhibit "A".

BLNR- ISSUANCE OF A REVOCABLE PERMIT FOR FUEL TRUCKS AND
GROUND SERVICE EQUIPMENT PARKING
BARBERS POINT AVIATION SERVICES, LLC
Page 2

ZONING:

State Land Use District: Urban
City and County of Honolulu LUO: P-2 (To be rezoned in the future)

LAND TITLE STATUS:

Non-ceded land acquired from the U.S. Government by the State of Hawai'i after Statehood
DHHL 30% entitlement lands pursuant to Hawai'i Admission Act YES ___ NO X

CURRENT USE STATUS:

Land presently encumbered by Governor's Executive Order No. 3861, setting aside
Kalaeloa Airport under the control and management of the Department of Transportation,
Airports Division (DOTA), State of Hawai'i, for Airport Purposes.

CHARACTER OF USE:

Barbers Point Aviation Services, LLC will use the spaces to park fuel trucks and ground
service equipment at Kalaeloa Airport.

COMMENCEMENT DATE:

To be determined by the Director of Transportation at a later date.

MONTHLY RENTAL:

\$3,354.16 (based on a rate of \$3.22 per square foot per annum for improved, paved land, as
determined from the DOTA schedule of rates and charges established by appraisal of
Airports property statewide).

SECURITY DEPOSIT:

Three (3) times the monthly rental in effect

DCCA VERIFICATION:

Place of business registration confirmed: YES X NO ___
Registered business name confirmed: YES X NO ___
Good standing confirmed: YES X NO ___

CHAPTER 343, HRS - ENVIRONMENTAL ASSESSMENT:

The subject land area is covered by the Final Environmental Assessment for the Kalaeloa Airfield Development Plan Improvements, State Project No. AO5011-02 dated June 2010. This Environmental Assessment was prepared by Wilson Okamoto Corp. for the State of Hawai'i, Department of Transportation, Airports Division, in part to evaluate the environmental effects of the recommended Kalaeloa Airfield Master Plan to meet existing and forecast general aviation demands.

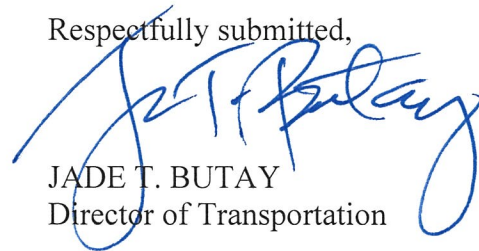
REMARKS:

The issuance of a Revocable Permit to Barbers Point Aviation Services, LLC, at Kalaeloa Airport complies with Chapter 343, Exemption Class 1.D.10 as a continuing aeronautical use, and is in accordance with Section 171-55 HRS, relating to Permits.

RECOMMENDATION:


That the Board authorize the Department of Transportation to issue a month-to-month Revocable Permit to Barbers Point Aviation Services, LLC, subject to: (1) terms and conditions herein outlined, which are by reference incorporated herein; and (2) such additional terms and conditions as may be prescribed by the Director of Transportation to best serve the interests of the State.

Respectfully submitted,

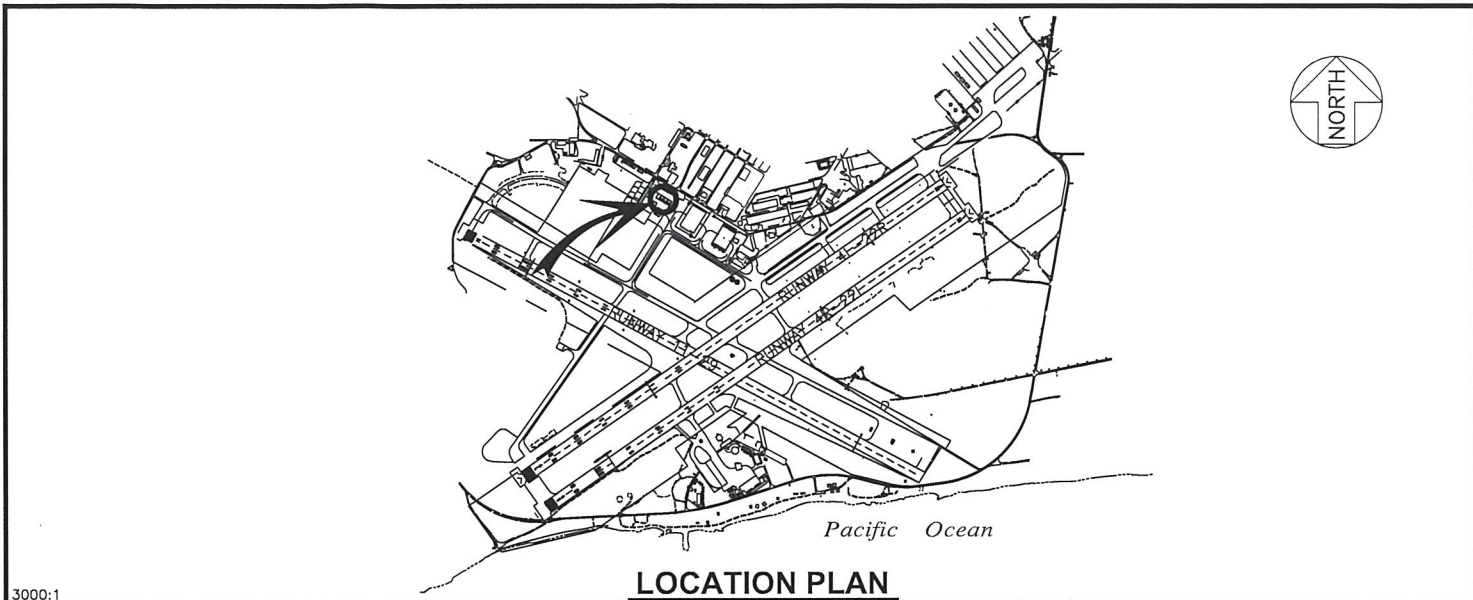


JADE T. BUTAY
Director of Transportation

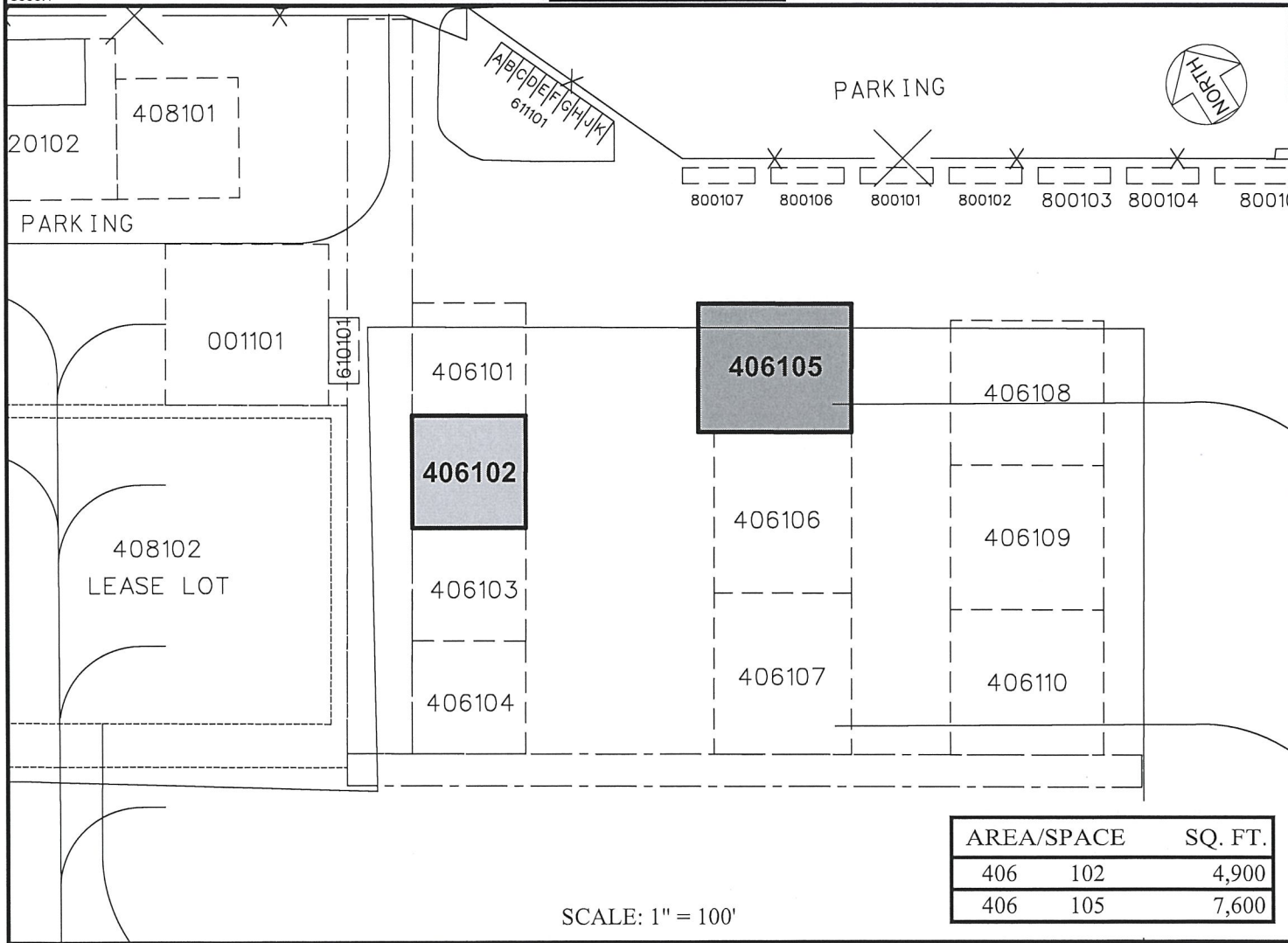
APPROVED FOR SUBMITTAL:



SUZANNE D. CASE
Chairperson and Member



3000:1



AREA/SPACE	SQ. FT.
406 102	4,900
406 105	7,600

DATE : JANUARY 2019

EXHIBIT: **A**



**BARBER'S POINT
AVIATION SERVICES, LLC**

TIE-DOWNS & LANDING

406102
406105

KALAELOA AIRPORT

N:\AIRPORTS\JRF_Kalaeloa\CAD\PM\jrf_406102-01.dwg