

DAVID Y. IGE  
GOVERNOR



**STATE OF HAWAII**  
**DEPARTMENT OF TRANSPORTATION**  
869 PUNCHBOWL STREET  
HONOLULU, HAWAII 96813-5097

JADE T. BUTAY  
DIRECTOR

Deputy Directors  
LYNN A.S. ARAKI-REGAN  
DEREK J. CHOW  
ROSS M. HIGASHI  
EDWIN H. SNIFFEN

IN REPLY REFER TO:

Board of Land and  
Natural Resources  
State of Hawai'i  
Honolulu, Hawai'i

ISSUANCE OF A REVOCABLE PERMIT FOR A T-HANGAR  
FOR STORAGE AND MAINTENANCE OF AIRCRAFT  
MOKULELE RESEARCH CORPORATION  
KALAELOA AIRPORT  
TAX MAP KEY: (1) 9-1-13: PORTION OF 32

O'AHU

REQUEST:

Issuance of a Revocable Permit for a T-Hangar for storage and maintenance of aircraft to Mokulele Research Corporation, situated at Kalaeloa Airport.

LEGAL REFERENCE:

Section 171-55, Hawai'i Revised Statutes (HRS).

APPLICANT:

Mokulele Research Corporation, whose mailing address is 841 Bishop Street, Suite 1101, Honolulu, Hawai'i 96813.

LOCATION AND TAX MAP KEY:

A portion of Kalaeloa Airport, Kapolei, Island of O'ahu, State of Hawai'i, identified by Tax Map Key: 1<sup>st</sup> Division, 9-1-13: portion of 32.

AREA:

Building/Room No. 411-103, containing an area of approximately 1,280 square feet, as shown and delineated on the attached map labeled Exhibit "A".

**ITEM M-9**

BLNR – ISSUANCE OF A REVOCABLE PERMIT FOR A T-HANGAR  
FOR STORAGE AND MAINTENANCE OF AIRCRAFT  
MOKULELE RESEARCH CORPORATION  
PAGE 2

ZONING:

State Land Use District: Urban  
City and County of Honolulu LUO: P-2 (To be rezoned in the future)

LAND TITLE STATUS:

Non-ceeded - Section 5(a) lands of the Hawai'i Admission Act  
DHHL 30% entitlement lands pursuant to Hawai'i Admission Act YES \_\_\_ NO X

CURRENT USE STATUS:

Land presently encumbered by Governor's Executive Order No. 3861, setting aside  
Kalaeloa Airport under the control and management of the Department of Transportation,  
Airports Division (DOTA), State of Hawai'i, for Airport Purposes.

CHARACTER OF USE:

T-Hangar for storage and maintenance of aircraft (2007 Vans RV-7, Tail No. N-278A).

COMMENCEMENT DATE:

To be determined by the Director of Transportation at a later date.

MONTHLY RENTAL:

\$602.00, as determined from the DOTA schedule of rates and charges established by  
appraisal of Airports property statewide.

SECURITY DEPOSIT:

Three (3) times the monthly rental in effect.

CHAPTER 343, HRS - ENVIRONMENTAL ASSESSMENT:

The subject land area is covered by the Final Environmental Assessment for the Kalaeloa  
Airfield Development Plan Improvements, State Project No. AO5011-02 dated June 2010.  
This Environmental Assessment was prepared by Wilson Okamoto Corp. for the State of  
Hawai'i, Department of Transportation, Airports Division, in part to evaluate the  
environmental effects of the recommended Kalaeloa Airfield Master Plan to meet existing  
and forecast general aviation demands.

BLNR – ISSUANCE OF A REVOCABLE PERMIT FOR A T-HANGAR  
FOR STORAGE AND MAINTENANCE OF AIRCRAFT  
MOKULELE RESEARCH CORPORATION  
PAGE 3

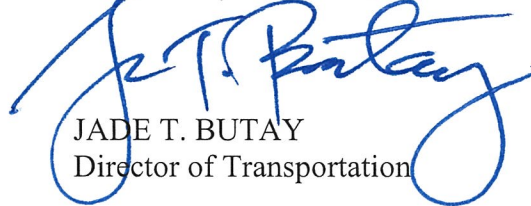
REMARKS:

The issuance of a revocable permit to Mokulele Research Corporation, for a T-Hangar for storage and maintenance of aircraft at Kalaeloa Airport complies with Chapter 343, Exemption Class 1.D.10 as a continuing aeronautical use, and is in accordance with Section 171-55 HRS, relating to Permits.

RECOMMENDATION:

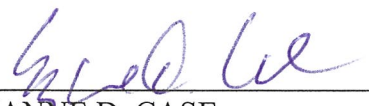
That the Board authorize the Department of Transportation to issue a month-to-month revocable permit to Mokulele Research Corporation, subject to: (1) terms and conditions herein outlined, which are by reference incorporated herein; and (2) such additional terms and conditions as may be prescribed by the Director of Transportation to best serve the interests of the State.

Respectfully submitted,



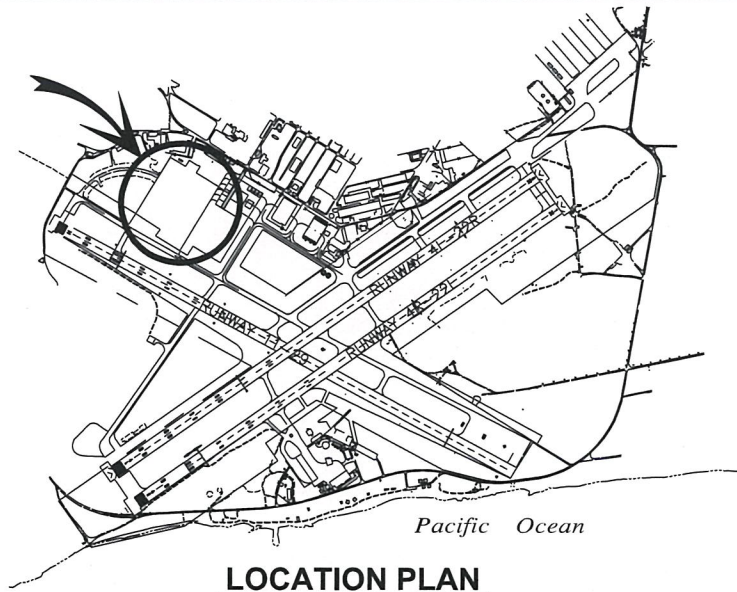
JADE T. BUTAY  
Director of Transportation

APPROVED FOR SUBMITTAL:



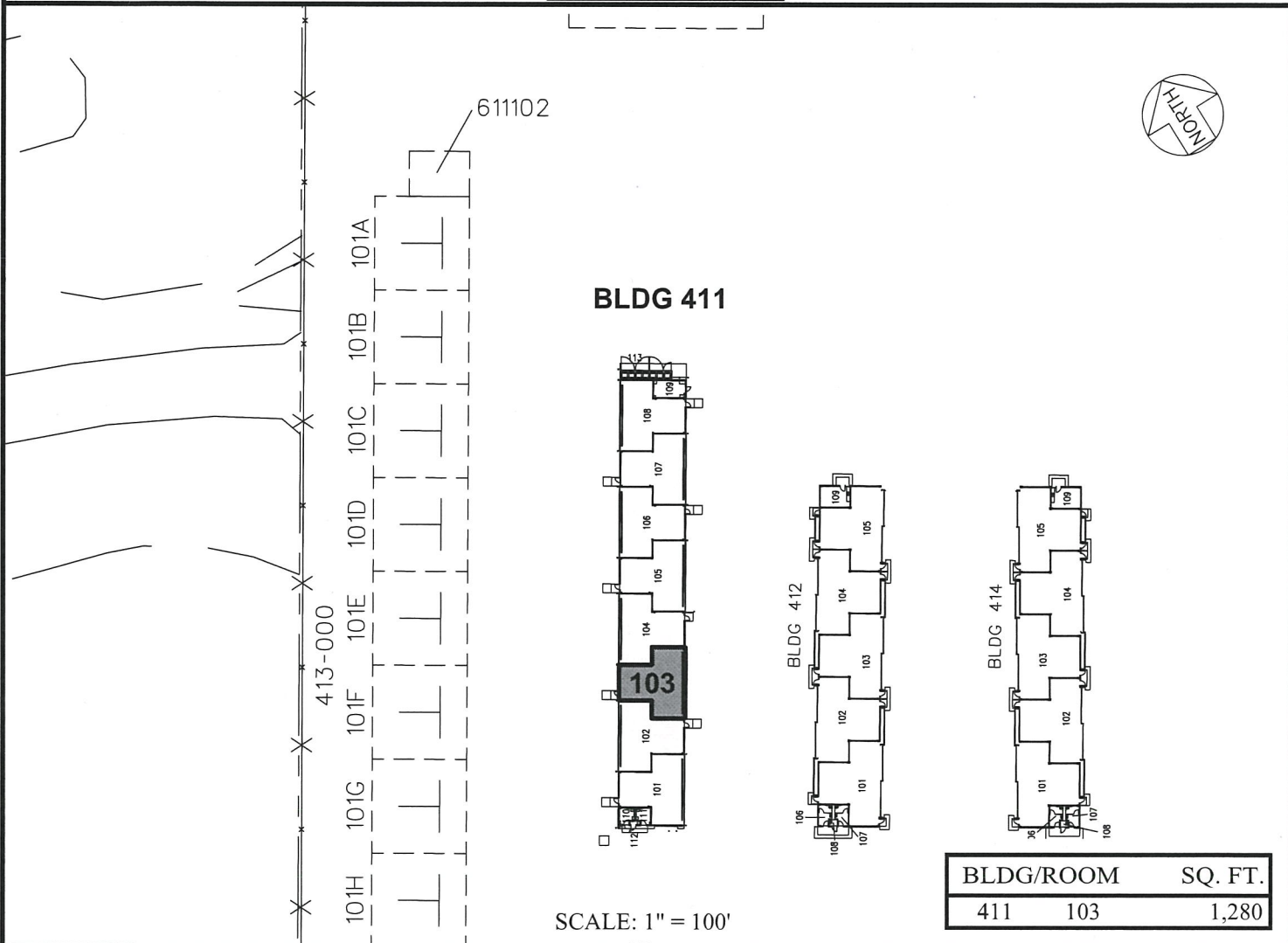
---

SUZANNE D. CASE  
Chairperson and Member



**LOCATION PLAN**

3000:1



**BLDG 411**

SCALE: 1" = 100'

BLDG/ROOM	SQ. FT.
411 103	1,280

RP-8858

DATE : MARCH 2019

EXHIBIT: **A**



MOKULELE RESEARCH CORPORATION

GENERAL AVIATION T-HANGARS

411103

**KALAELOA AIRPORT**