

STATE OF HAWAII
DEPARTMENT OF TRANSPORTATION
869 PUNCHBOWL STREET
HONOLULU, HAWAII 96813-5097

JADE T. BUTAY
DIRECTOR

Deputy Directors
LYNN A.S. ARAKI-REGAN
DEREK J. CHOW
ROSS M. HIGASHI
EDWIN H. SNIFFEN

IN REPLY REFER TO:

Board of Land and
Natural Resources
State of Hawai'i
Honolulu, Hawai'i

ISSUANCE OF A REVOCABLE PERMIT FOR T-HANGARS
FOR STORAGE AND MAINTENANCE OF AIRCRAFT
BARBERS POINT FLIGHT SCHOOL, LLC
KALAELOA AIRPORT
TAX MAP KEY: (1) 9-1-13: PORTION OF 32

O'AHU

REQUEST:

Issuance of a Revocable Permit for T-Hangars for storage and maintenance of aircraft to Barbers Point Flight School, LLC, situated at Kalaeloa Airport.

LEGAL REFERENCE:

Section 171-55, Hawai'i Revised Statutes (HRS).

APPLICANT:

Barbers Point Flight School, LLC, whose mailing address is 91-1259 Midway Road, Bldg. 104, Suite 1, Kapolei, Hawai'i 96707.

LOCATION AND TAX MAP KEY:

A portion of Kalaeloa Airport, Kapolei, Island of O'ahu, State of Hawai'i, identified by Tax Map Key: 1st Division, 9-1-13: portion of 32.

AREA:

Building/Room No. 414-102, containing an area of approximately 1,288 square feet, and Building/Room No. 414-104, containing an area of approximately 1,288 square feet, as shown and delineated on the attached map labeled Exhibit "A".

ITEM M-4

BLNR – ISSUANCE OF A REVOCABLE PERMIT FOR T-HANGARS
FOR STORAGE AND MAINTENANCE OF AIRCRAFT
BARBERS POINT FLIGHT SCHOOL, LLC
PAGE 2

ZONING:

State Land Use District: Urban
City and County of Honolulu LUO: P-2 (To be rezoned in the future)

LAND TITLE STATUS:

Non-ceded - Section 5(a) lands of the Hawai'i Admission Act
DHHL 30% entitlement lands pursuant to Hawai'i Admission Act YES ___ NO X

CURRENT USE STATUS:

Land presently encumbered by Governor's Executive Order No. 3861, setting aside Kalaeloa Airport under the control and management of the Department of Transportation, Airports Division (DOTA), State of Hawai'i, for Airport Purposes.

CHARACTER OF USE:

T-Hangars for the storage and maintenance of aircraft (2017 Cessna/Textron Aviation 172S, Tail No. N-424PE and 2017 Cessna/Textron Aviation 172S, Tail No. N-423PE).

COMMENCEMENT DATE:

To be determined by the Director of Transportation at a later date.

MONTHLY RENTAL:

\$2,421.44, as determined from the DOTA schedule of rates and charges established by appraisal of Airports property statewide.

SECURITY DEPOSIT:

Three (3) times the monthly rental in effect.

CHAPTER 343, HRS - ENVIRONMENTAL ASSESSMENT:

The subject land area is covered by the Final Environmental Assessment for the Kalaeloa Airfield Development Plan Improvements, State Project No. AO5011-02 dated June 2010. This Environmental Assessment was prepared by Wilson Okamoto Corp. for the State of Hawai'i, Department of Transportation, Airports Division, in part to evaluate the environmental effects of the recommended Kalaeloa Airfield Master Plan to meet existing and forecast general aviation demands.

BLNR – ISSUANCE OF A REVOCABLE PERMIT FOR T-HANGARS
FOR STORAGE AND MAINTENANCE OF AIRCRAFT
BARBERS POINT FLIGHT SCHOOL, LLC
PAGE 3

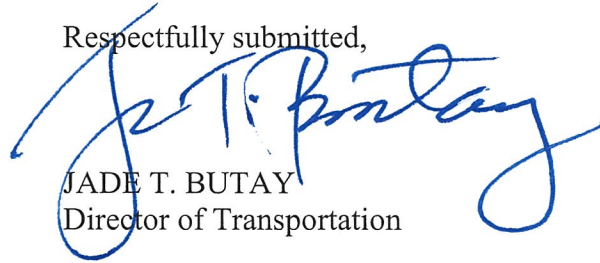
REMARKS:

The issuance of a revocable permit to Barbers Point Flight School, LLC, for T-Hangars for storage and maintenance of aircraft at Kalaeloa Airport complies with Chapter 343, Exemption Class 1.D.10 as a continuing aeronautical use, and is in accordance with Section 171-55 HRS, relating to Permits.

RECOMMENDATION:

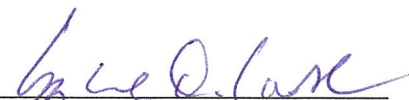
That the Board authorize the Department of Transportation to issue a month-to-month revocable permit to Barbers Point Flight School, LLC, subject to: (1) terms and conditions herein outlined, which are by reference incorporated herein; and (2) such additional terms and conditions as may be prescribed by the Director of Transportation to best serve the interests of the State.

Respectfully submitted,

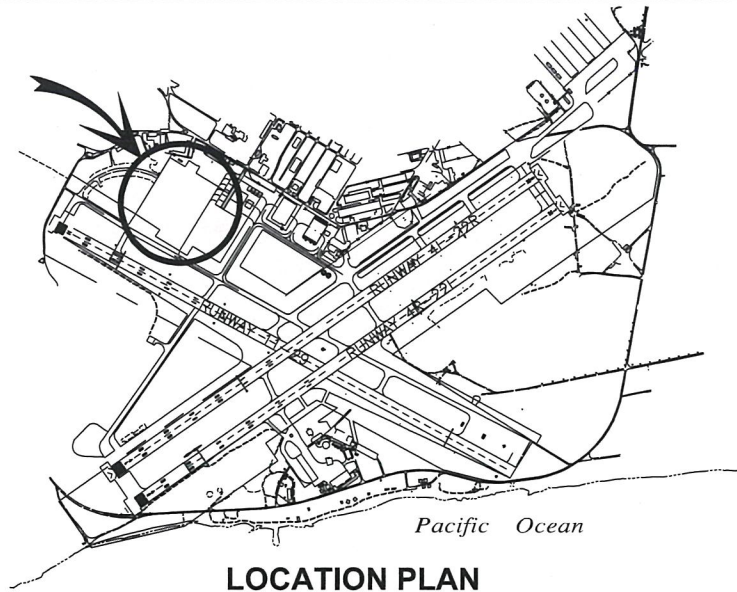


JADE T. BUTAY
Director of Transportation

APPROVED FOR SUBMITTAL:

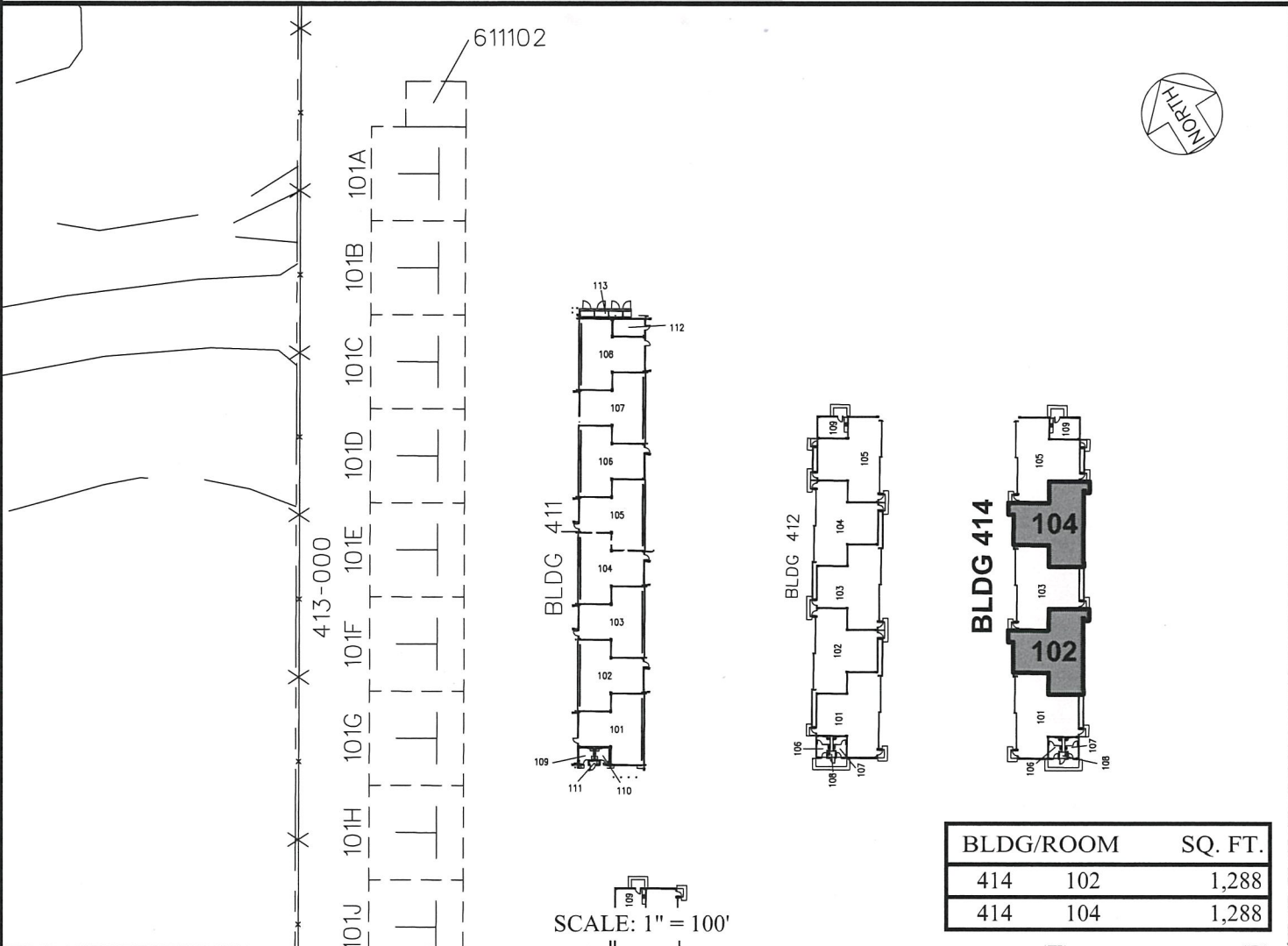


SUZANNE D. CASE
Chairperson and Member



3000:1

LOCATION PLAN



RP-8849

DATE : MARCH 2019

EXHIBIT: **A**



Airports Division

BARBERS POINT
FLIGHT SCHOOL LLC

GENERAL AVIATION
T-HANGARS

414102
414104

KALAELOA AIRPORT