

DAVID Y. IGE  
GOVERNOR



STATE OF HAWAII  
DEPARTMENT OF TRANSPORTATION  
869 PUNCHBOWL STREET  
HONOLULU, HAWAII 96813-5097

JADE T. BUTAY  
DIRECTOR

Deputy Directors  
LYNN A.S. ARAKI-REGAN  
DEREK J. CHOW  
ROSS M. HIGASHI  
EDWIN H. SNIFFEN

IN REPLY REFER TO:

Board of Land and  
Natural Resources  
State of Hawai'i  
Honolulu, Hawai'i

ISSUANCE OF A REVOCABLE PERMIT FOR VEHICLE PARKING  
STALLS TO SUPPORT PACKAGE DELIVERY OPERATIONS  
FEDEX GROUND PACKAGE SYSTEM, INC.  
ELLISON ONIZUKA KONA INTERNATIONAL AIRPORT AT KEĀHOLE  
TAX MAP KEY: (3) 7-3-43: PORTION OF 40

HAWAI'I

LEGAL REFERENCE:

Section 171-55, Hawai'i Revised Statutes

APPLICANT:

FedEx Ground Package System, Inc. (FedEx Ground), whose business address is  
1000 FedEx Drive, Moon Township, Pennsylvania 15108.

LOCATION AND TAX MAP KEY:

Portion of Ellison Onizuka Kona International Airport at Keāhole (KOA), Kailua-Kona,  
Island of Hawai'i, identified by Tax Map Key: 3rd Division, 7-3-43: Portion of 40.

AREA:

Space Nos. 610-155 D, E, F, G, H, J, K, and L, containing an area of approximately  
450 square feet each, and 610-155W, containing an area of 594 square feet, as shown on  
the attached Exhibit A.

ZONING:

State Land Use District:  
County of Hawai'i:

Urban & Conservation  
Industrial (MG-1a) and Open

**ITEM M-8**

BLNR – ISSUANCE OF A REVOCABLE PERMIT FOR VEHICLE PARKING  
STALLS TO SUPPORT PACKAGE DELIVERY OPERATIONS  
FEDEX GROUND PACKAGE SYSTEM, INC.  
PAGE 2

LAND TITLE STATUS:

Section 5(a) lands of the Hawai‘i Admission Act: Ceded  
DHHL 30% entitlement lands pursuant to Hawai‘i Admission Act YES \_\_\_ NO X

CURRENT USE STATUS:

Airport and aeronautical purposes.

CHARACTER OF USE:

FedEx Ground will use the parking spaces to support its package delivery operations.

COMMENCEMENT DATE:

Upon execution of the revocable permit.

MONTHLY RENTAL:

\$1,485.00 (as determined from the DOTA schedule of rates and charges established by appraisal of Airports property statewide).

SECURITY DEPOSIT:

\$4,455.00 or three times the monthly rental in effect

HOLDOVER TENANCY:

\$49.50

DCCA VERIFICATION:

Place of business registration confirmed:	YES <u>X</u>	NO _____
Registered business name confirmed:	YES <u>X</u>	NO _____
Good standing confirmed:	YES <u>X</u>	NO _____

CHAPTER 343, HRS - ENVIRONMENTAL ASSESSMENT:

Pursuant to Section 11-200-8(a), Environmental Impact Statement Rules of the Department of Health, State of Hawai‘i, this disposition is exempt from requirements regarding preparation of an environmental assessment, negative declaration, or environmental impact statement as required by Chapter 343, Hawai‘i Revised Statutes, as amended, relating to Environmental Impact Statements, because the proposed action falls

BLNR – ISSUANCE OF A REVOCABLE PERMIT FOR VEHICLE PARKING  
STALLS TO SUPPORT PACKAGE DELIVERY OPERATIONS  
FEDEX GROUND PACKAGE SYSTEM, INC.  
PAGE 3

within Exemption Class #1, Comprehensive Exemption List for the State of Hawai‘i, Department of Transportation, dated November 15, 2000, as approved by the Environmental Quality Council. Exemption Class #1 covers operations, repairs, or maintenance of existing structures, facilities, equipment, or topographical features involving negligible or no expansion or change of use beyond that previously existing.

The DOTA consulted with the U.S. Federal Aviation Administration as to the appropriateness of the citation of the Environmental Exemption Class from the Comprehensive list for the Department of Transportation dated November 15, 2000. In this case, the FAA concurred on the appropriateness.

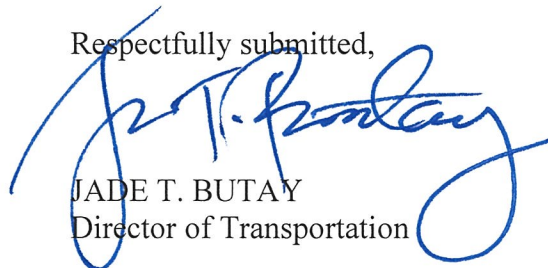
REMARKS:

In accordance with Section 171-55 HRS, relating to Permits, the Department of Transportation proposes to issue a month-to-month revocable permit to FedEx Ground for its package delivery operations at KOA.

RECOMMENDATION:


That the Board authorize the Department of Transportation to issue a month-to-month revocable permit to FedEx Ground, subject to: (1) terms and conditions herein outlined, which are by reference incorporated herein; and (2) such additional terms and conditions as may be prescribed by the Director of Transportation to best serve the interests of the State.

Respectfully submitted,



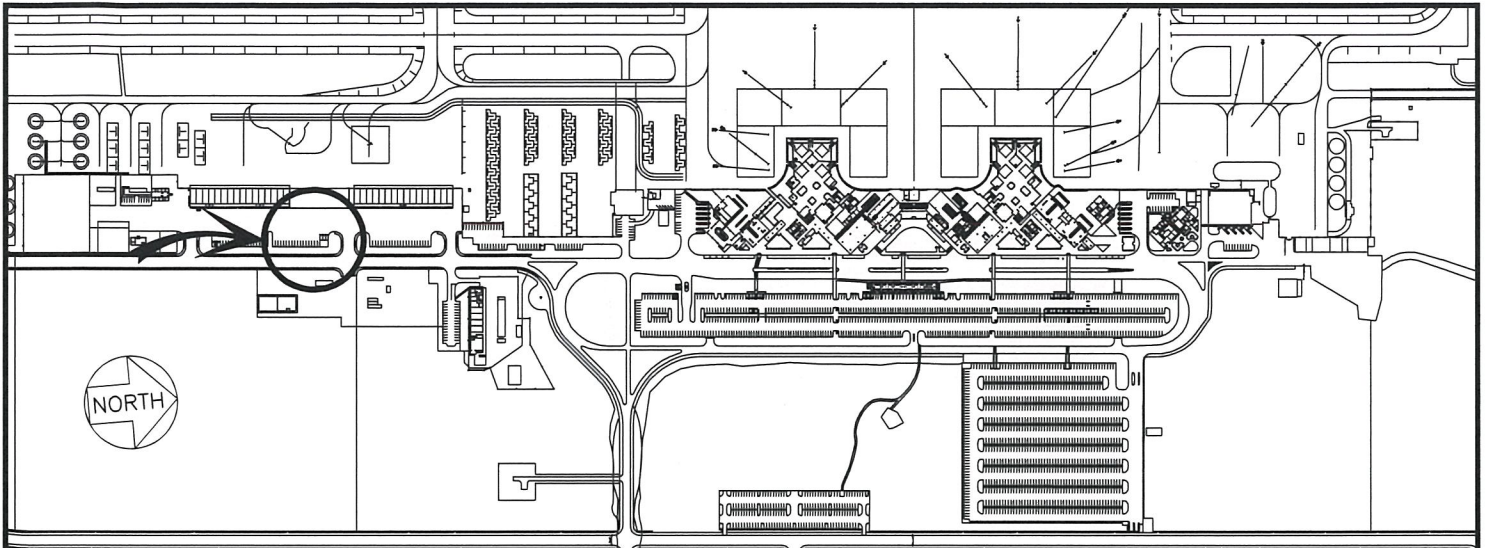
JADE T. BUTAY  
Director of Transportation

APPROVED FOR SUBMITTAL:



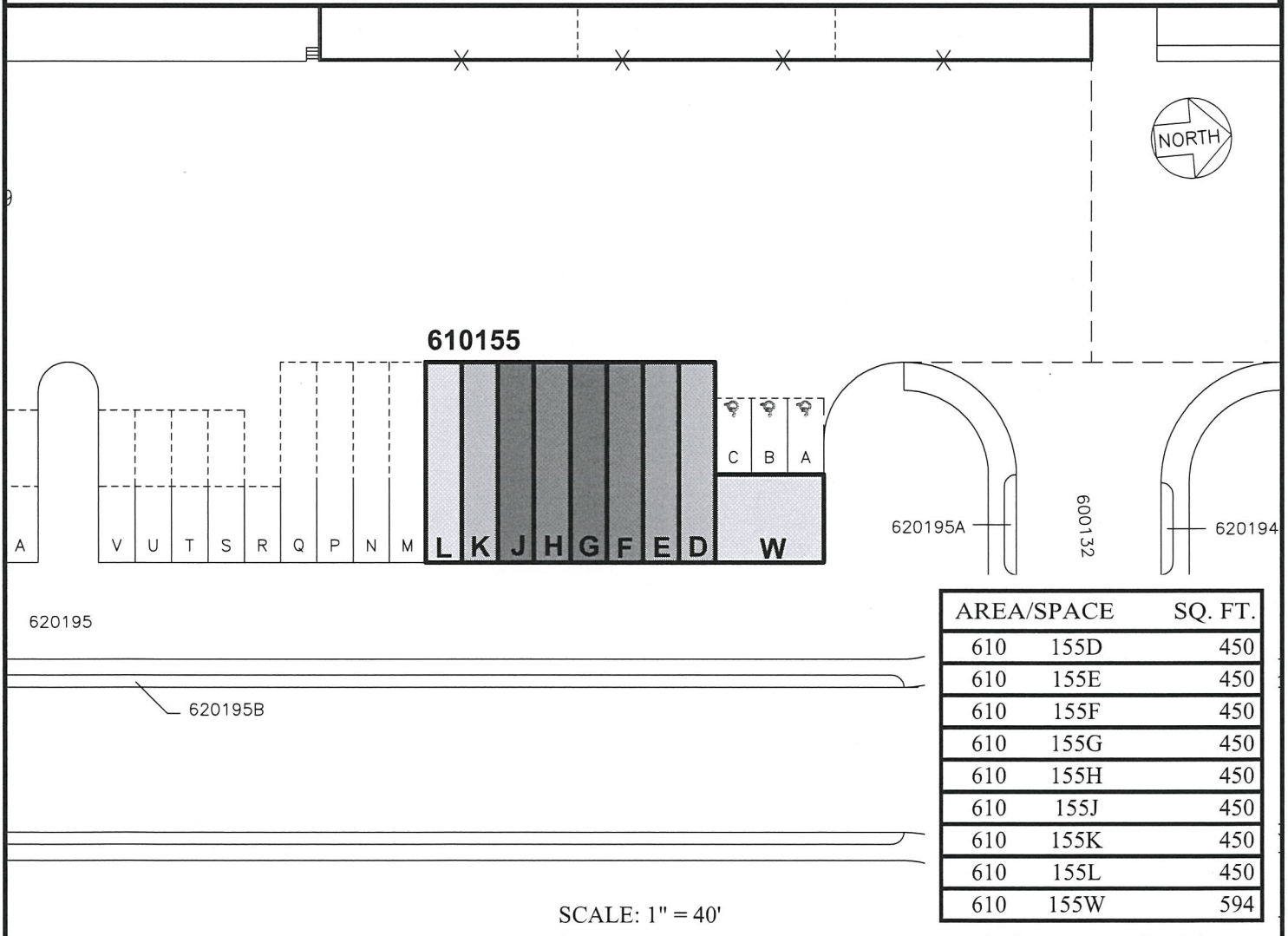
SUZANNE D. CASE  
Chairperson and Member





**LOCATION PLAN**

600:1



**610155**

AREA/SPACE	SQ. FT.
610 155D	450
610 155E	450
610 155F	450
610 155G	450
610 155H	450
610 155J	450
610 155K	450
610 155L	450
610 155W	594

SCALE: 1" = 40'

DATE : MARCH 2019

EXHIBIT: **A**



**FEDEX GROUND PACKAGE SYSTEM, INC.**

**PARKING STALLS**

**610155D-L  
610155W**  
PLATS C1, 39

N:\AIRPORTS\KOA\_Kona\CAD\PM\koo\_610155D-01.dwg