

DAVID Y. IGE
GOVERNOR



STATE OF HAWAII
DEPARTMENT OF TRANSPORTATION
869 PUNCHBOWL STREET
HONOLULU, HAWAII 96813-5097

JADE T. BUTAY
DIRECTOR

Deputy Directors
LYNN A.S. ARAKI-REGAN
DEREK J. CHOW
ROSS M. HIGASHI
EDWIN H. SNIFFEN

IN REPLY REFER TO:

Board of Land and
Natural Resources
State of Hawai'i
Honolulu, Hawai'i

ISSUANCE OF A REVOCABLE PERMIT FOR SPACE FOR
A HAZARDOUS WASTE RECEPTACLE AND STORAGE CLOSET
UNITED AIRLINES, INC.

DANIEL K. INOUE INTERNATIONAL AIRPORT O'AHU
TAX MAP KEYS: (1) 1-1-003: 001 (PORTION) AND (1) 1-1-003: 065 (PORTION)

APPLICANT:

United Airlines, Inc. (United Airlines), whose business address is 233 S. Wacker Drive,
11th Floor HDQOU, Chicago, Illinois 60606.

LEGAL REFERENCE:

Section 171-55, Hawai'i Revised Statutes (HRS).

LOCATION AND TAX MAP KEYS:

Portions of Diamond Head Concourse at Daniel K. Inouye International Airport, Island of
Oahu, State of Hawai'i, identified by Tax Map Keys: 1st Division, 1-1-003: 001 (Portion)
and 1-1-003: 065 (Portion).

AREA:

Area/Space No. 540-109, containing an area of approximately 80 square feet, and
Building/Room No. 373-304, containing an area of approximately 101 square feet, as
shown and delineated on the attached maps labeled Exhibits "A" and "B".

ZONING:

State Land Use District: Urban
City and County of Honolulu LUO: Industrial (I-2)

ITEM M-6

BLNR – ISSUANCE OF A REVOCABLE PERMIT FOR SPACE FOR
A HAZARDOUS WASTE RECEPTACLE AND STORAGE CLOSET
UNITED AIRLINES, INC.

Page 2

LAND TITLE STATUS:

Non-Ceded - Section 5(a) lands of the Hawai'i Admission Act
DHHL 30% entitlement lands pursuant to Hawai'i Admission Act YES ___ NO X

CURRENT USE STATUS:

Land presently encumbered by Governor's Executive Order No. 3201, dated June 8, 1983, setting aside 3,152.177 acres designated as Daniel K. Inouye International Airport under the control and management of the State of Hawai'i, Department of Transportation, Airports Division (DOTA) for Airport Purposes.

CHARACTER OF USE:

United Airlines will use the spaces for a hazardous waste receptacle and storage closet, as part of their Signatory Airline Carrier Operations at Daniel K. Inouye International Airport.

COMMENCEMENT DATE:

Upon execution of the revocable permit.

MONTHLY RENTAL:

\$1,032.31 (based upon a rate of \$68.44, as determined from the Airports Division Signatory Rates and Charges, Hawai'i Airports System, effective February 1, 2019.)

SECURITY DEPOSIT:

Three (3) times the monthly rental in effect.

DCCA VERIFICATION:

Place of business registration confirmed:	YES <u>X</u>	NO ___
Registered business name confirmed:	YES <u>X</u>	NO ___
Good standing confirmed:	YES <u>X</u>	NO ___

CHAPTER 343, HRS - ENVIRONMENTAL ASSESSMENT:

Pursuant to Section 11-200-8(a), Environmental Impact Statement Rules of the Department of Health, State of Hawai'i, this disposition is exempt from requirements regarding preparation of an environmental assessment, negative declaration, or environmental impact statement as required by Chapter 343, Hawai'i Revised Statutes, as amended, relating to Environmental Impact Statements, because the proposed action falls

BLNR – ISSUANCE OF A REVOCABLE PERMIT FOR SPACE FOR
A HAZARDOUS WASTE RECEPTACLE AND STORAGE CLOSET
UNITED AIRLINES, INC.

Page 3

within Exemption Class #1, Comprehensive Exemption List for the State of Hawai'i, Department of Transportation, dated November 15, 2000, as approved by the Environmental Quality Council. Exemption Class #1 covers operations, repairs, or maintenance of existing structures, facilities, equipment, or topographical features involving negligible or no expansion or change of use beyond that previously existing.

The DOTA consulted with the U.S. Federal Aviation Administration (FAA) as to the appropriateness of the citation of the Environmental Exemption Class from the Comprehensive list for the Department of Transportation dated November 15, 2000. The FAA concurred on the appropriateness.

REMARKS:

In accordance with Section 171-55, HRS, relating to Permits, the Department of Transportation proposes to issue a month-to-month revocable permit to United Airlines for space for a hazardous waste receptacle and storage closet, as part of their Signatory Airline Carrier Operations at Daniel K. Inouye International Airport.


RECOMMENDATION:

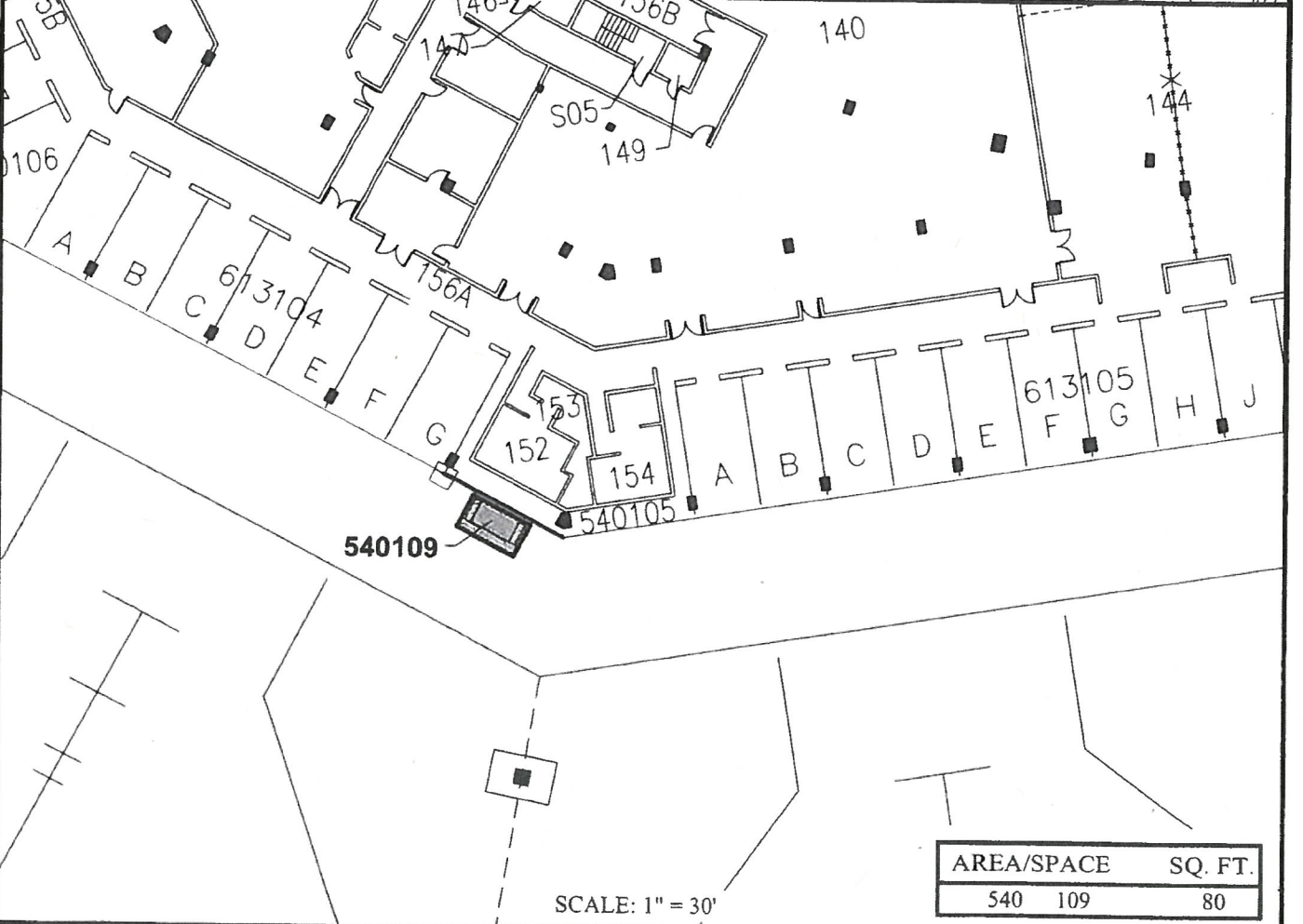
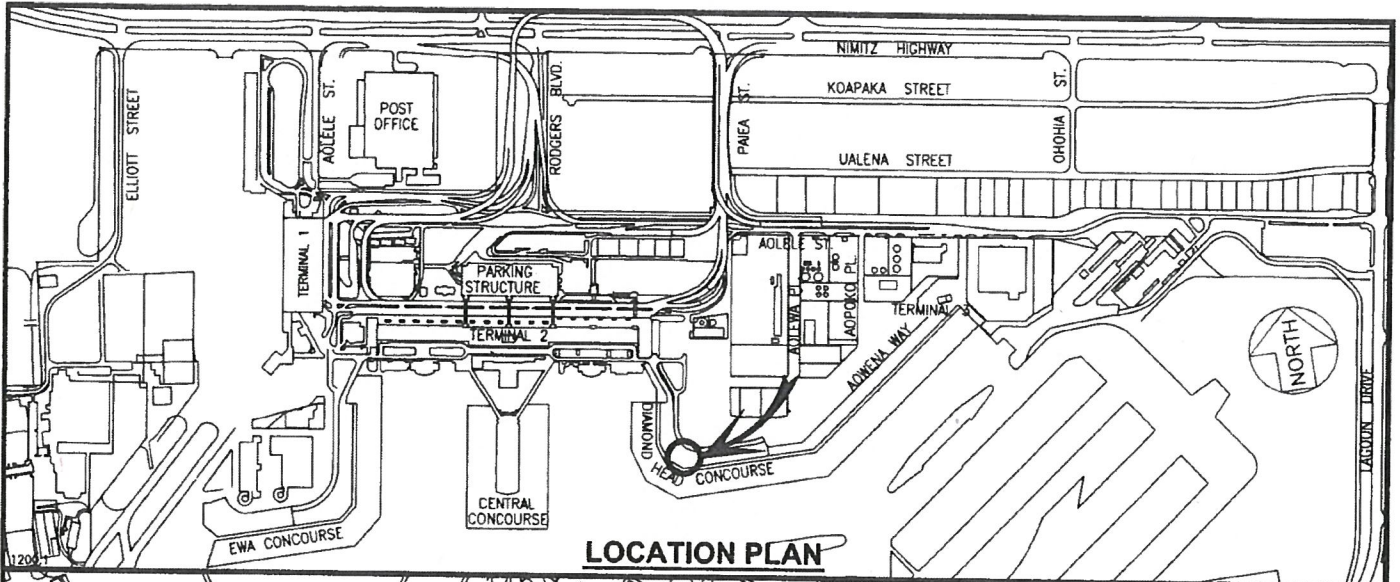
That the Board authorize the Department of Transportation to issue a month-to-month revocable permit to United Airlines, subject to: (1) terms and conditions herein outlined, which are by reference incorporated herein; and (2) such additional terms and conditions as may be prescribed by the Director of Transportation to best serve the interests of the State.

Respectfully submitted,


JADE T. BUTAY
Director of Transportation

APPROVED FOR SUBMITTAL:


SUZANNE D. CASE
Chairperson and Member



RP-8829

DATE : JANUARY 2019

EXHIBIT: **A**



Airports Division

UNITED AIRLINES, INC.

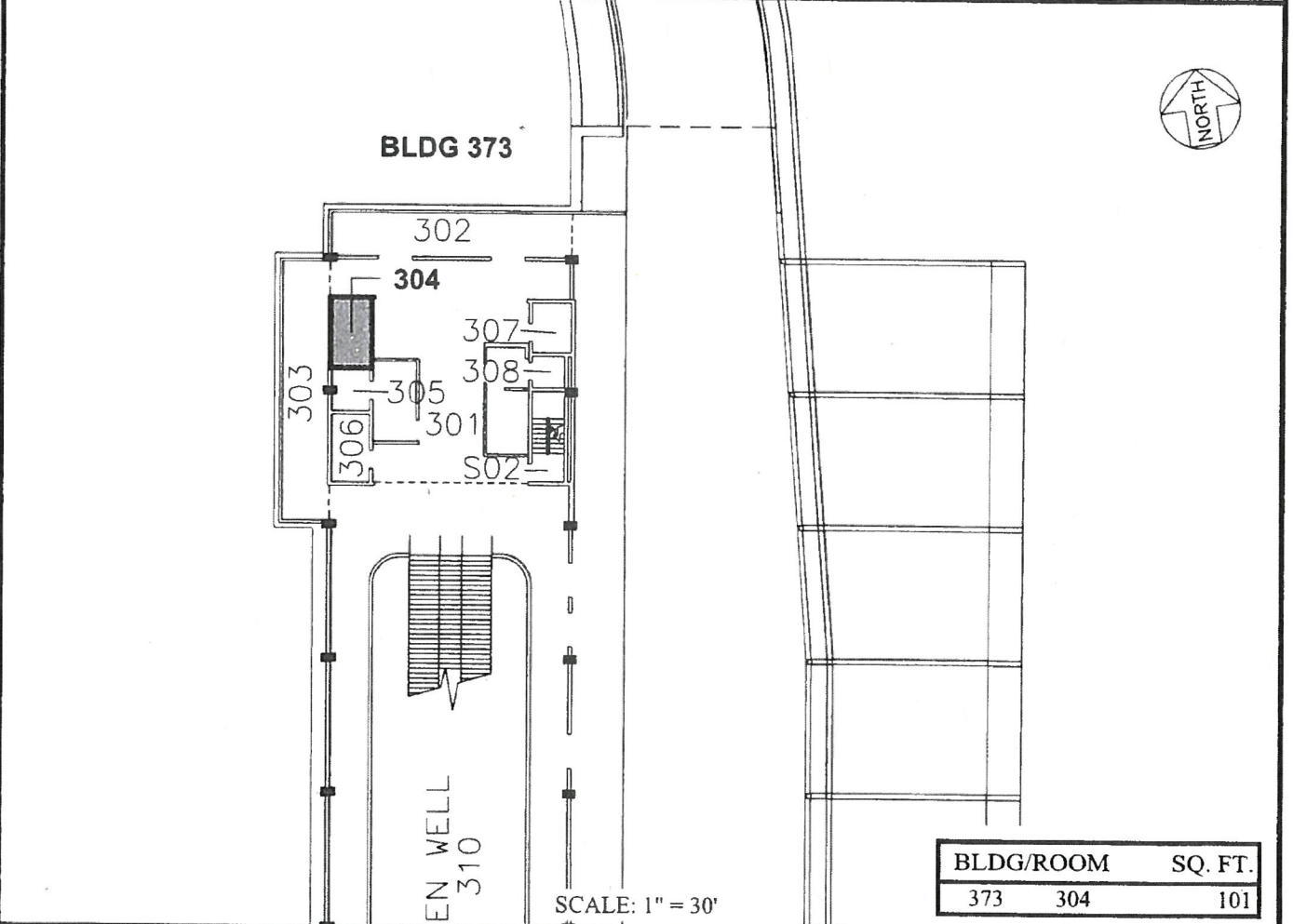
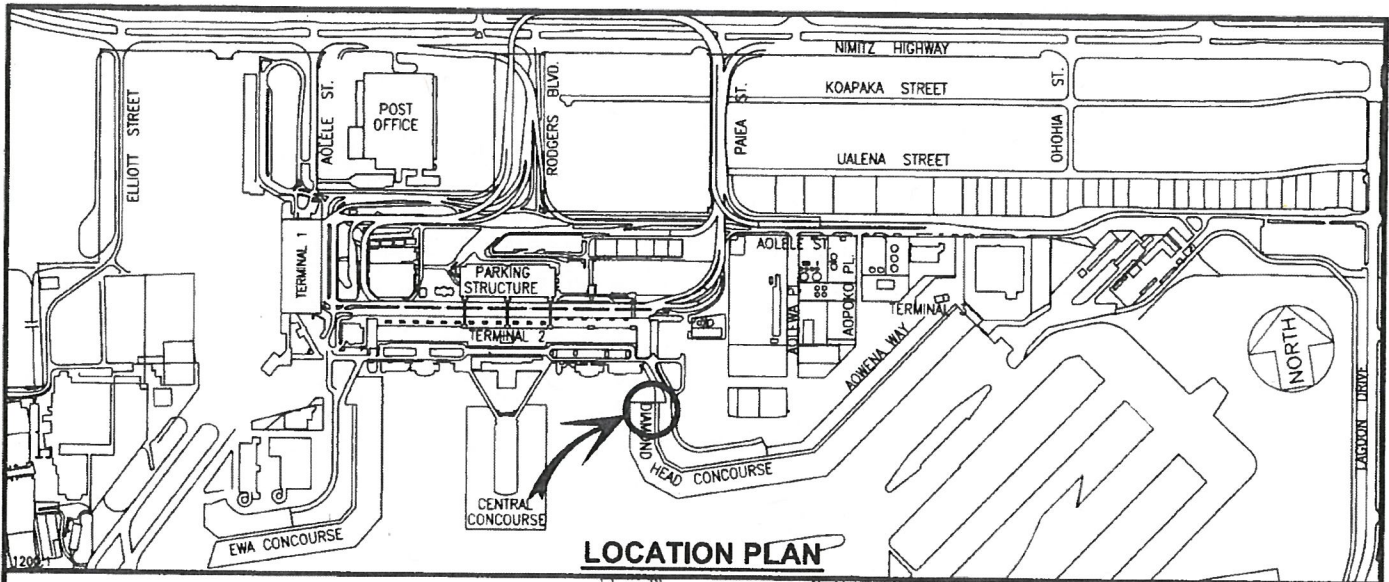
APRON
D.H. CONCOURSE
GROUND LEVEL

540109


PLAT M1

DANIEL K. INOUE INTERNATIONAL AIRPORT

N:\AIRPORTS\HNL_HONOLULU\CAD\PM_DRAFT\HNL_540109-01_DRAFT.DWG



BLDG/ROOM	SQ. FT.
373 304	101

RP-8829	DATE : JANUARY 2019	EXHIBIT: B
 Airports Division	UNITED AIRLINES, INC.	BUILDING 373 D.H. CONCOURSE THIRD LEVEL 373304 PLAT M3