



**STATE OF HAWAII**  
**DEPARTMENT OF TRANSPORTATION**  
869 PUNCHBOWL STREET  
HONOLULU, HAWAII 96813-5097

JADE T. BUTAY  
DIRECTOR

Deputy Directors  
LYNN A. S. ARAKI-REGAN  
DEREK J. CHOW  
ROSS M. HIGASHI  
EDWIN H. SNIFFEN

IN REPLY REFER TO:

Board of Land and  
Natural Resources  
State of Hawai'i  
Honolulu, Hawai'i

ISSUANCE OF A REVOCABLE PERMIT FOR STORAGE OF  
GROUND SERVICE EQUIPMENT FOR AIRLINE OPERATIONS  
UNITED AIRLINES, INC.  
DANIEL K. INOUE INTERNATIONAL AIRPORT  
TAX MAP KEYS: (1) 1-1-003: 001 (PORTION)

O'AHU

APPLICANT:

United Airlines, Inc. (United Airlines), whose business address is 233 S. Wacker Drive,  
11<sup>th</sup> Floor HDQOU, Chicago, Illinois 60606.

LEGAL REFERENCE:

Section 171-55, Hawai'i Revised Statutes (HRS).

LOCATION AND TAX MAP KEYS:

A portion of Daniel K. Inouye International Airport, Island of Oahu, State of Hawai'i,  
identified by Tax Map Key: 1<sup>st</sup> Division, 1-1-003: 001 (Portion).

AREA:

Area/Space No. 630-112, containing an area of approximately 8,467 square feet, as  
shown and delineated on the attached map labeled Exhibit "A".

ZONING:

State Land Use District:	Urban
City and County of Honolulu LUO:	Industrial (I-2)

BLNR – ISSUANCE OF A REVOCABLE PERMIT FOR STORAGE OF GROUND SERVICE EQUIPMENT FOR AIRLINE OPERATIONS, UNITED AIRLINES, INC.

Page 2

LAND TITLE STATUS:

Non-Ceded - Section 5(a) lands of the Hawai'i Admission Act

DHHL 30% entitlement lands pursuant to Hawai'i Admission Act YES \_\_\_ NO X

CURRENT USE STATUS:

Land presently encumbered by Governor's Executive Order No. 3201, dated June 8, 1983, setting aside 3,152.177 acres designated as Daniel K. Inouye International Airport under the control and management of the State of Hawai'i, Department of Transportation, Airports Division (DOTA) for Airport Purposes.

CHARACTER OF USE:

United Airlines will use the spaces for storage of ground service equipment, as part of their Signatory Airline Carrier Operations at Daniel K. Inouye International Airport.

COMMENCEMENT DATE:

Upon execution of the revocable permit.

MONTHLY RENTAL:

\$4,706.24 (based upon a rate of \$6.67 per square foot per annum for paved, ramp area open equipment parking, as determined from the DOTA schedule of rates and charges established by appraisal of Airports property statewide.

SECURITY DEPOSIT:

Three (3) times the monthly rental in effect.

DCCA VERIFICATION:

Place of business registration confirmed:	YES <u>X</u>	NO ___
Registered business name confirmed:	YES <u>X</u>	NO ___
Good standing confirmed:	YES <u>X</u>	NO ___

CHAPTER 343, HRS - ENVIRONMENTAL ASSESSMENT:

Pursuant to Section 11-200-8(a), Environmental Impact Statement Rules of the Department of Health, State of Hawai'i, this disposition is exempt from requirements regarding preparation of an environmental assessment, negative declaration, or environmental impact statement as required by Chapter 343, Hawai'i Revised Statutes, as amended, relating to Environmental Impact Statements, because the proposed action falls within Exemption Class #1, Comprehensive Exemption List for the State of Hawai'i,

BLNR – ISSUANCE OF A REVOCABLE PERMIT FOR STORAGE OF GROUND SERVICE EQUIPMENT FOR AIRLINE OPERATIONS, UNITED AIRLINES, INC.

Page 3

Department of Transportation, dated November 15, 2000, as approved by the Environmental Quality Council. Exemption Class #1 covers operations, repairs, or maintenance of existing structures, facilities, equipment, or topographical features involving negligible or no expansion or change of use beyond that previously existing.

The DOTA consulted with the U.S. Federal Aviation Administration (FAA) as to the appropriateness of the citation of the Environmental Exemption Class from the Comprehensive list for the Department of Transportation dated November 15, 2000. The FAA concurred on the appropriateness.

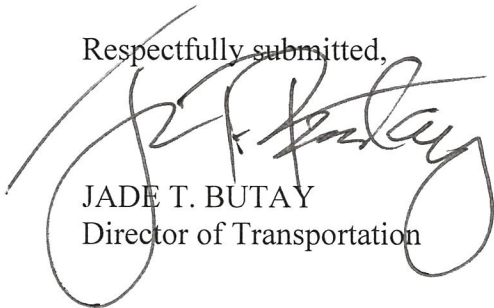
REMARKS:

In accordance with Section 171-55, HRS, relating to Permits, the Department of Transportation proposes to issue a month-to-month revocable permit to United Airlines to store ground service equipment, as part of their Signatory Airline Carrier Operations at Daniel K. Inouye International Airport.

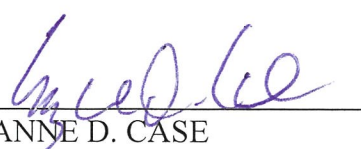
RECOMMENDATION:

That the Board authorize the Department of Transportation to issue a month-to-month revocable permit to United Airlines, subject to: (1) terms and conditions herein outlined, which are by reference incorporated herein; and (2) such additional terms and conditions as may be prescribed by the Director of Transportation to best serve the interests of the State.

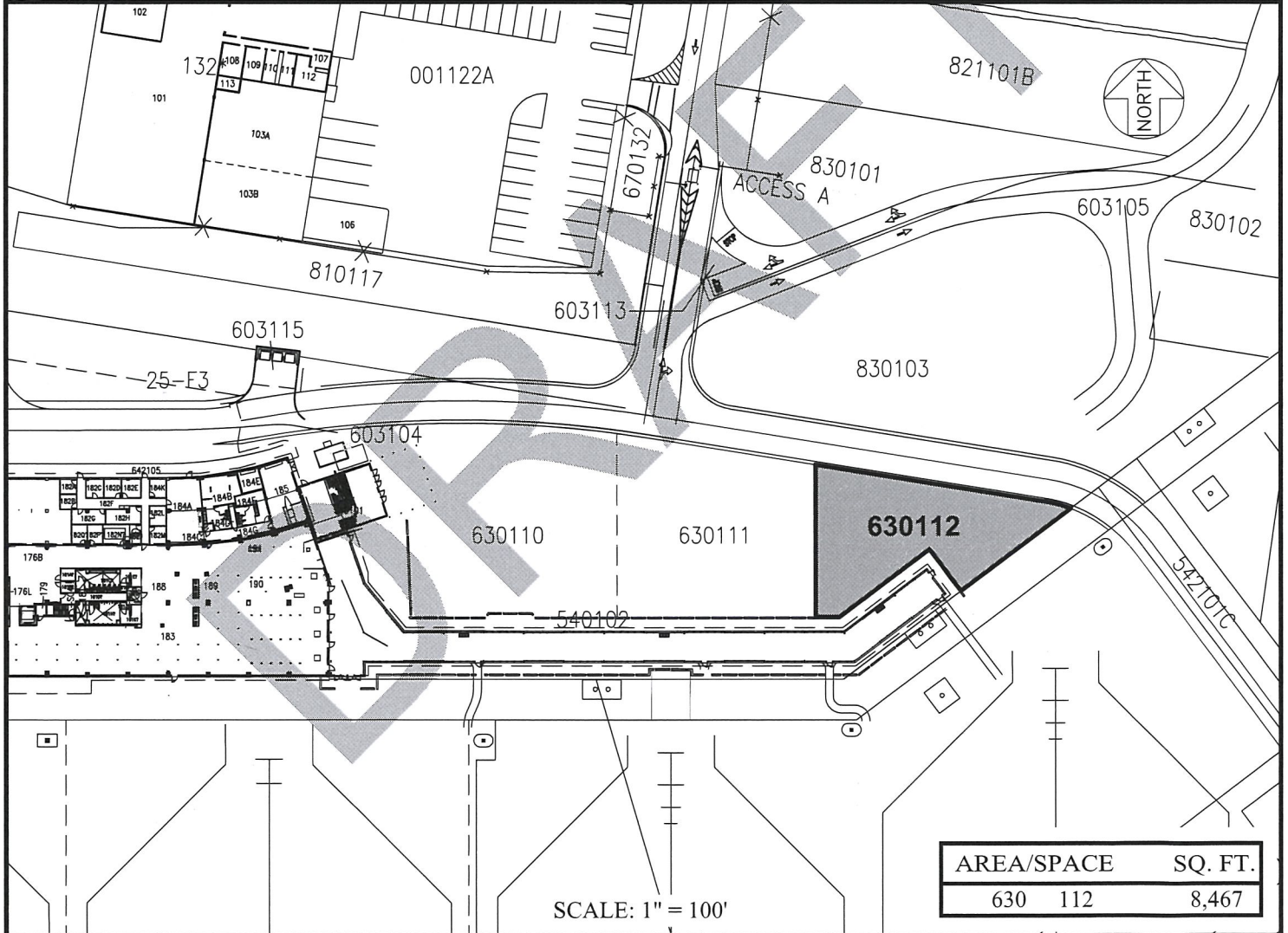
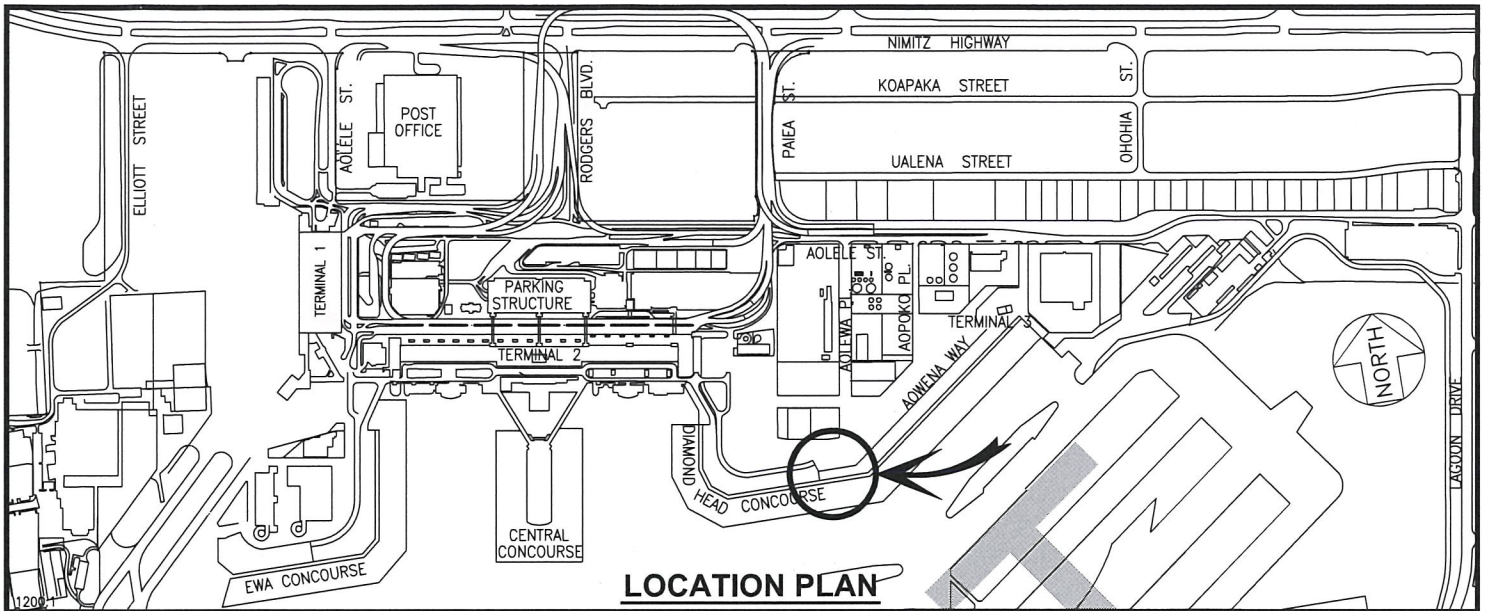
Respectfully submitted,

  
JADE T. BUTAY  
Director of Transportation

APPROVED FOR SUBMITTAL:

  
SUZANNE D. CASE  
Chairperson and Member





DATE : MAY 2019

EXHIBIT: **A**



Airports Division

UNITED AIRLINES, INC.

D.H. PAVED AREA

630112

PLAT M1

**DANIEL K. INOUE INTERNATIONAL AIRPORT**

N:\AIRPORTS\HNL\_HONOLULU\CAD\PM\\_DRAFT\HNL\_630112-01\_DRAFT.DWG