

DAVID Y. IGE  
GOVERNOR



STATE OF HAWAII  
DEPARTMENT OF TRANSPORTATION  
869 PUNCHBOWL STREET  
HONOLULU, HAWAII 96813-5097

JADE T. BUTAY  
DIRECTOR

Deputy Directors  
LYNN A. S. ARAKI-REGAN  
DEREK J. CHOW  
ROSS M. HIGASHI  
EDWIN H. SNIFFEN

IN REPLY REFER TO:

Board of Land and Natural Resources  
State of Hawaii  
Honolulu, Hawaii

**OAHU**

ISSUANCE OF FOUR (4) MONTH-TO-MONTH PERMITS TO ALASKA MARINE LINES, INC., SITUATED AT PIER 29, HONOLULU HARBOR, OAHU, TAX MAP KEY NO. (1) 1-5-038:001 (P), GOVERNOR'S EXECUTIVE ORDER NO. 2903

**LEGAL REFERENCE:**

Sections 171-6, 171-13, 171-17, 171-55, and 171-59, Hawaii Revised Statutes (HRS), as amended.

**APPLICANT:**

Alaska Marine Lines, Inc. (Applicant) is a foreign profit corporation whose business registration and mailing address is 1003 Bishop Street, Suite 1600, Pauahi Tower, Honolulu, Hawaii 96813.

**CHARACTER OF USE:**

Interstate marine transportation operations support facilities at Pier 29, Honolulu Harbor, Oahu.

**LOCATION:**

Portion of governmental lands at Pier 29, Honolulu Harbor, Oahu, Tax Map Key No. (1) 1-5-038:001 (P), Governor's Executive Order No. 2903, as shown on the attached map labeled Exhibit A.

**ITEM M-9**

**AREA: See attached Exhibits A and B**

AREA	DESCRIPTION	TYPE	SQ. FT.	RATE PER SQ. FT.	MONTHLY RENTAL CHARGE	SECURITY DEPOSIT
1	Modular Office	Improved Land - Paved	1,091	\$ 0.80	\$ 872.80	\$ 1,745.60
2	Storage of Containers	Improved Land - Paved	2,800	\$ 0.80	\$ 2,240.00	\$ 4,480.00
3	Portable Restroom	Improved Land - Paved	500	\$ 0.80	\$ 400.00	\$ 800.00
4	Freight Clerk Station	Improved Land - Paved	1,056	\$ 0.80	\$ 844.80	\$ 1,689.60
					\$ 4,357.60	\$ 8,715.20
					<b>Total Monthly Rental</b>	<b>Total Security Deposit</b>

**CONSIDERATION:**

Determined by appraisal as of April 1, 2019, for Revocable Permits in Honolulu Harbor.

**ZONING:**

State Land Use Commission: Urban  
 City and County of Honolulu: I-3 (Waterfront Industrial District)

**COMMENCEMENT DATE:**

To be determined by the Director of Transportation.

**TRUST LAND STATUS:**

Subsection 5(a) of the Hawaii Admission Act (Non-ceded Lands).

**CURRENT USE STATUS:**

The Applicant currently has an existing month-to-month permit that occupies space at Pier 29, Honolulu Harbor, Oahu, for its modular office, storage of containers, portable restroom, and a freight clerk station. The Department of Transportation, Harbors Division (DOT Harbors) has been reviewing all month-to-month permits to ensure compliance with and applicability to Sections 171-17 and 171-55, HRS. The DOT Harbors is updating the Applicant's permit with current appraised rates and updated permit terms (as applicable).

**LAND TITLE STATUS:**

Acquired by the DOT Harbors, through eminent domain proceedings by issuance of Governor's Executive Order No. 2903.

**CHAPTER 343 - ENVIRONMENTAL ASSESSMENT:**

This use is exempt from the Office of Environmental Quality Control (OEQC) requirements pursuant to Chapter 11-200.1, Hawaii Administrative Rules, "Exemption Class 1: Operations, repairs or maintenance of existing structures, facilities, equipment or topographical features, involving negligible or no expansion or change of use beyond that previously existing."

Declaration of Exemption was published with the OEQC in *The Environmental Notice* on September 23, 2019.

**REMARKS:**

The Applicant is a full-service interstate marine transportation operation support facility company regulated by the State of Hawaii, Public Utilities Commission. The Applicant provides barge service to and from Honolulu Harbor, transporting items such as heavy equipment and vehicles, construction materials, commercial and personal vehicles, bulk liquid fertilizers, and a variety of other goods.

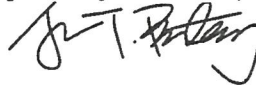
Currently, the Applicant has an existing month-to-month permit to support its Hawaii barge operation. The DOT Harbors has been reviewing all month-to-month permits to ensure compliance with and applicability to Sections 171-17 and 171-55, HRS.

The existing month-to-month permit was issued on December 1, 2012, and rent is currently \$1,880.00 per month. This Submittal will update and renew the month-to-month permit which is compliant with Chapter 171, HRS.

**RECOMMENDATION:**

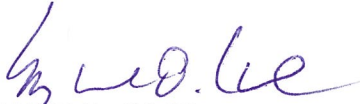
That the Board authorize the DOT Harbors to issue the Applicant four (4) month-to-month revocable permits for the above-stated purposes, subject to the terms and conditions outlined above and incorporated herein by reference, and such terms and conditions as may be prescribed by the Director of Transportation to best serve the interests of the State.

Respectfully submitted,



JADE T. BUTAY  
Director of Transportation

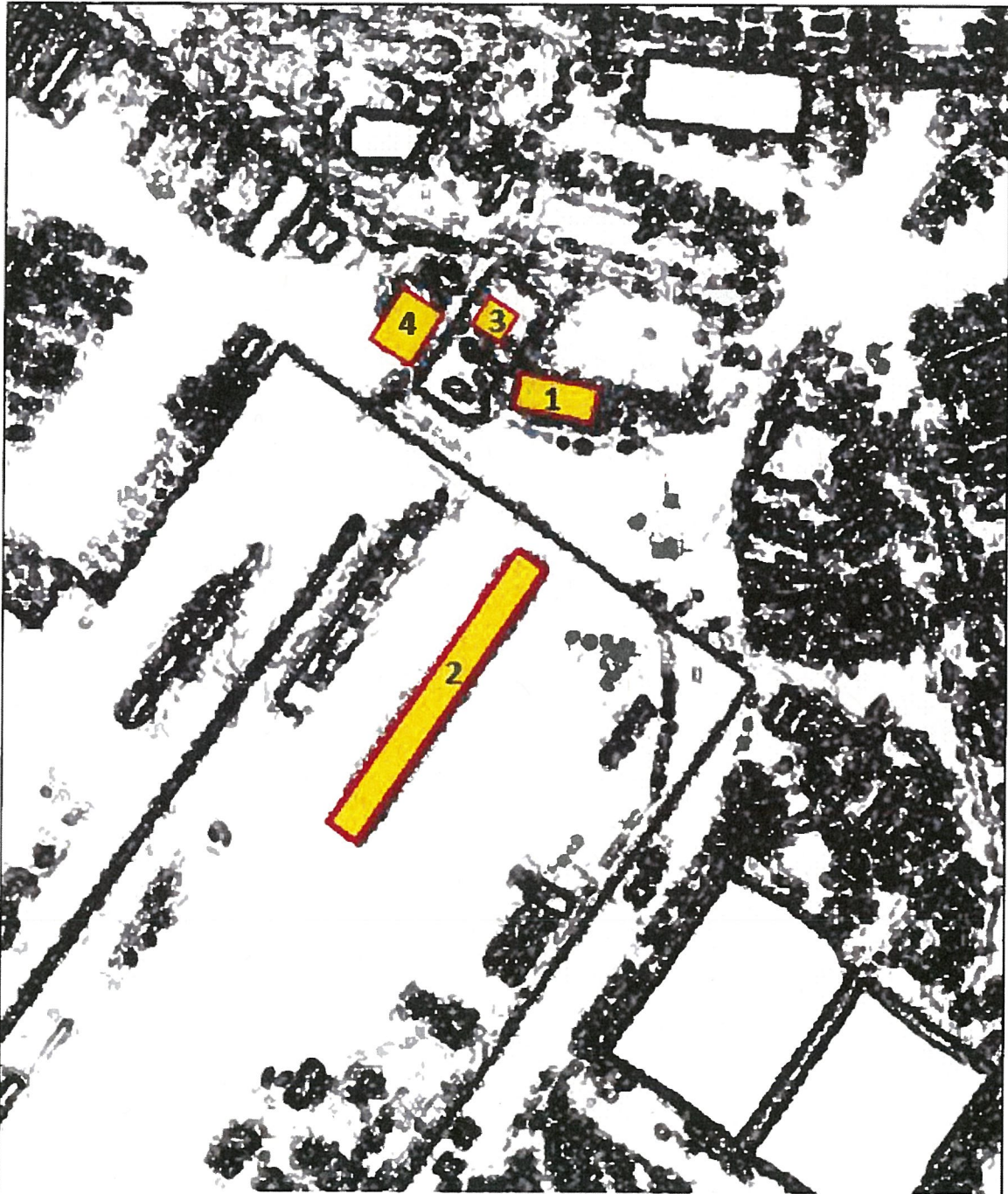
APPROVED FOR SUBMITTAL:



SUZANNE D. CASE  
Chairperson and Member  
Board of Land and Natural Resources

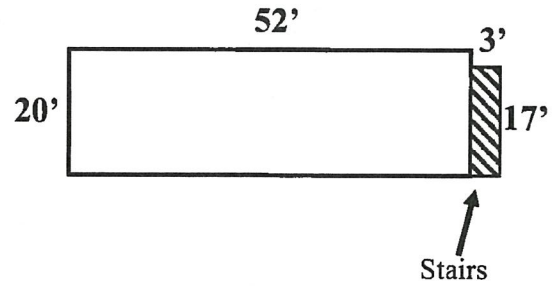
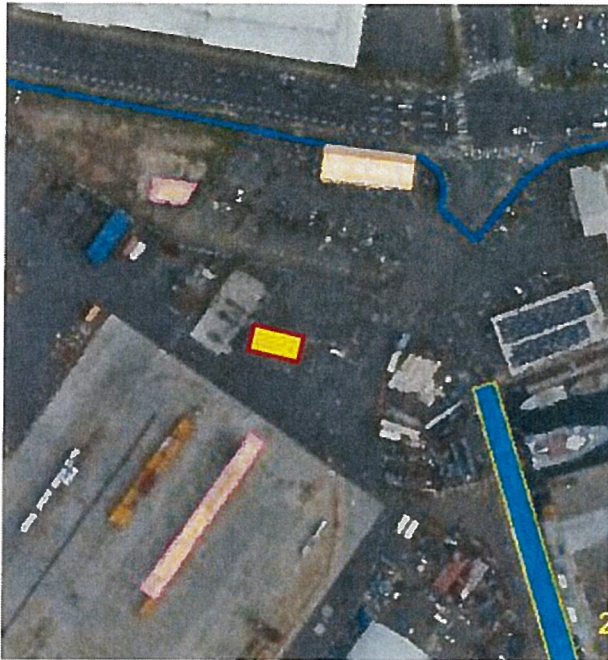
Attachments: Exhibits A and B





AREA	DESCRIPTION	TYPE	DIMENSIONS		SQ. FT.
1	Modular Office	Improved Land - Paved	(20' x 52') + (3' x 17')		1,091
2	Storage of Containers	Improved Land - Paved	16'	175'	2,800
3	Portable Restroom	Improved Land - Paved	20'	25'	500
4	Freight Clerk Station	Improved Land - Paved	24'	44'	1,056

Area 1 – Modular Office

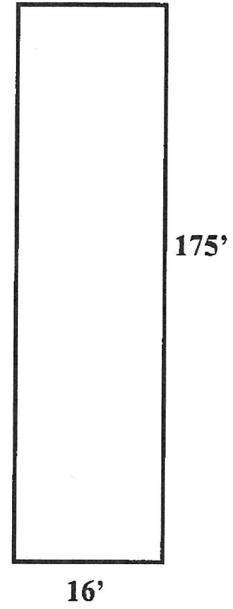
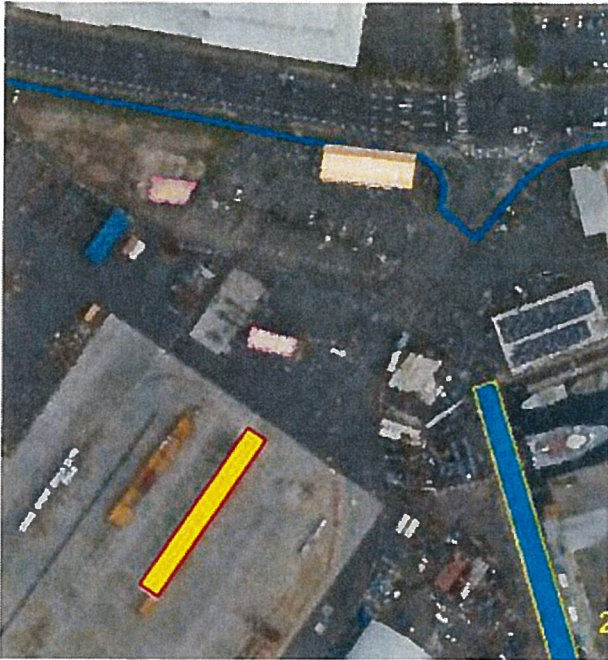


AREA	DESCRIPTION	TYPE	SQ. FT.
1	Modular Office	Improved - Paved Land	1,091





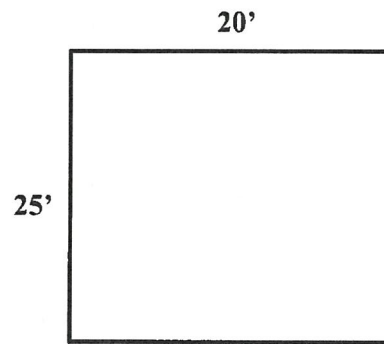
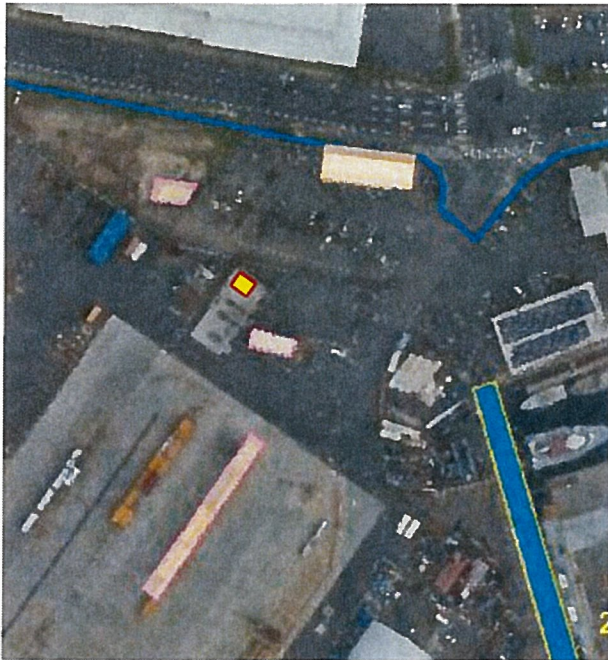
Area 2 – Storage of Containers



AREA	DESCRIPTION	TYPE	DIMENSIONS		SQ. FT.
2	Storage of Containers	Improved - Paved Land	16	175	2,800



**Area 3 – Portable Restroom**

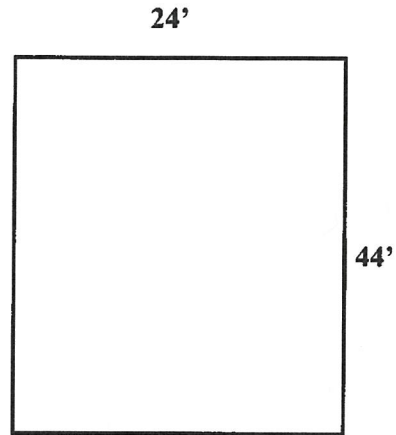
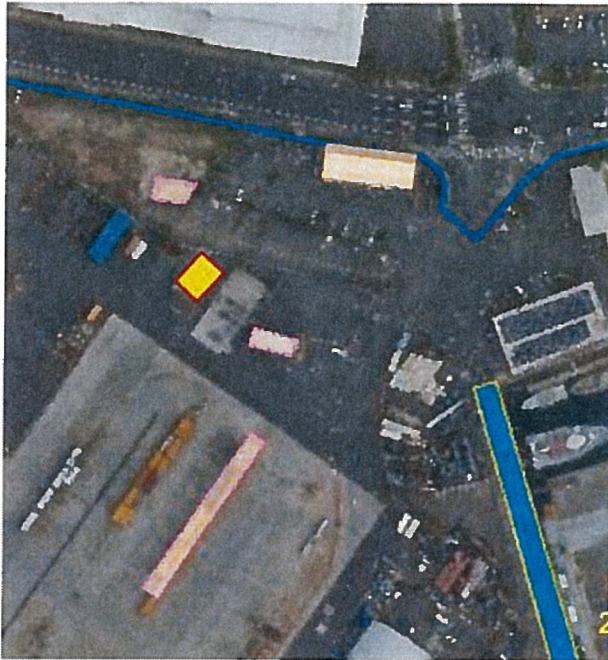


AREA	DESCRIPTION	TYPE	DIMENSIONS		SQ. FT.
3	Portable Restroom	Improved - Paved Land	20.0	25	500





**Area 4 -Freight Clerk Station**



AREA	DESCRIPTION	TYPE	DIMENSIONS		SQ. FT.
4	Freight Clerk Station	Improved - Paved Land	24	44	1,056

