

DAVID Y. IGE
GOVERNOR



STATE OF HAWAII
DEPARTMENT OF TRANSPORTATION
869 PUNCHBOWL STREET
HONOLULU, HAWAII 96813-5097

JADE T. BUTAY
DIRECTOR

Deputy Directors
LYNN A.S. ARAKI-REGAN
DEREK J. CHOW
ROSS M. HIGASHI
EDWIN H. SNIFFEN

IN REPLY REFER TO:

Board of Land and
Natural Resources
State of Hawai'i
Honolulu, Hawai'i

ISSUANCE OF A REVOCABLE PERMIT FOR EQUIPMENT PARKING
AND A MECHANICS TENT FOR AIRLINE OPERATIONS
UNITED AIRLINES, INC.
ELLISON ONIZUKA KONA INTERNATIONAL AIRPORT AT KEĀHOLE
TAX MAP KEY: (3) 7-3-43: PORTION OF 40

HAWAII

LEGAL REFERENCE:

Section 171-55, Hawai'i Revised Statutes.

APPLICANT:

United Airlines, Inc. (United), whose business address PO Box 66100, Chicago, Illinois 60666.

LOCATION AND TAX MAP KEY:

Portion of Ellison Onizuka Kona International Airport at Keāhole (KOA), Kailua-Kona, Island of Hawai'i, identified by Tax Map Key: 3rd Division, 7-3-43: Portion of 40.

AREA:

Area/Space No. 630-143, containing an area of approximately 1,904 square feet,
Area/Space No. 630-144, containing an area of approximately 1,260 square feet,
Area/Space No. 630-135, containing an area of approximately 3,600 square feet,
Area/Space No. 630-154, containing an area of approximately 800 square feet, and
Bldg/Room No. 329-105B, containing an area of approximately 32 square feet, as shown
and delineated on the attached maps labeled Exhibits "A", "B", and "C".

ZONING:

State Land Use District:	Urban & Conservation
County of Hawai'i:	Industrial (MG-1a) and Open

ITEM M-7

BLNR – ISSUANCE OF A REVOCABLE PERMIT FOR EQUIPMENT PARKING AND A MECHANICS TENT, UNITED AIRLINES, INC.

Page 2

LAND TITLE STATUS:

Section 5(a) lands of the Hawai‘i Admission Act: Ceded
DHHL 30% entitlement lands pursuant to Hawai‘i Admission Act YES ___ NO X

CURRENT USE STATUS:

Airport and aeronautical purposes.

CHARACTER OF USE:

United will use the space for equipment parking and a mechanics tent as part of its airline operations.

COMMENCEMENT DATE:

Upon execution of the revocable permit.

MONTHLY RENTAL:

\$1,303.98 (as determined from the DOTA schedule of rates and charges established by appraisal of Airports property statewide).

SECURITY DEPOSIT:

\$3,911.94, or three (3) times the monthly rental in effect.

DCCA VERIFICATION:

Place of business registration confirmed:	YES <u>X</u>	NO _____
Registered business name confirmed:	YES <u>X</u>	NO _____
Good standing confirmed:	YES <u>X</u>	NO _____

CHAPTER 343, HRS - ENVIRONMENTAL ASSESSMENT:

Pursuant to Section 11-200-8(a), Environmental Impact Statement Rules of the Department of Health, State of Hawai‘i, this disposition is exempt from requirements regarding preparation of an environmental assessment, negative declaration, or environmental impact statement as required by Chapter 343, Hawai‘i Revised Statutes, as amended, relating to Environmental Impact Statements, because the proposed action falls within Exemption Class #1, Comprehensive Exemption List for the State of Hawai‘i, Department of Transportation, dated November 15, 2000, as approved by the Environmental Quality Council. Exemption Class #1 covers operations, repairs, or

BLNR – ISSUANCE OF A REVOCABLE PERMIT FOR EQUIPMENT PARKING AND A MECHANICS TENT, UNITED AIRLINES, INC.

Page 3

maintenance of existing structures, facilities, equipment, or topographical features involving negligible or no expansion or change of use beyond that previously existing.

The DOTA consulted with the U.S. Federal Aviation Administration as to the appropriateness of the citation of the Environmental Exemption Class from the Comprehensive list for the Department of Transportation dated November 15, 2000. In this case, the FAA concurred on the appropriateness.

REMARKS:

In accordance with Section 171-55 HRS, relating to Permits, the Department of Transportation proposes to issue a month-to-month revocable permit to United for equipment parking and a mechanics tent for its airline operations at KOA. United is a signatory airline carrier.

RECOMMENDATION:

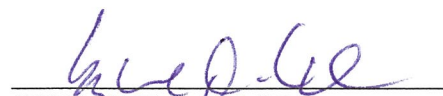
That the Board authorize the Department of Transportation to issue a month-to-month revocable permit to United, subject to: (1) terms and conditions herein outlined, which are by reference incorporated herein; and (2) such additional terms and conditions as may be prescribed by the Director of Transportation to best serve the interests of the State.

Respectfully submitted,

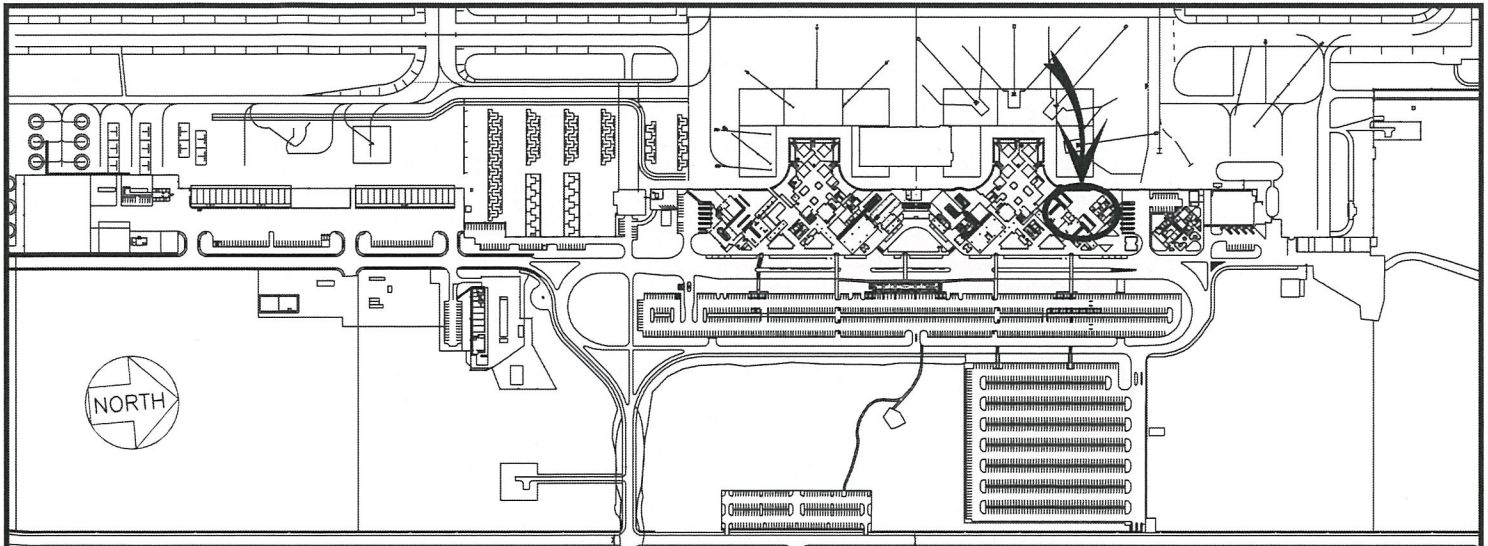


JADE T. BUTAY
Director of Transportation

APPROVED FOR SUBMITTAL:

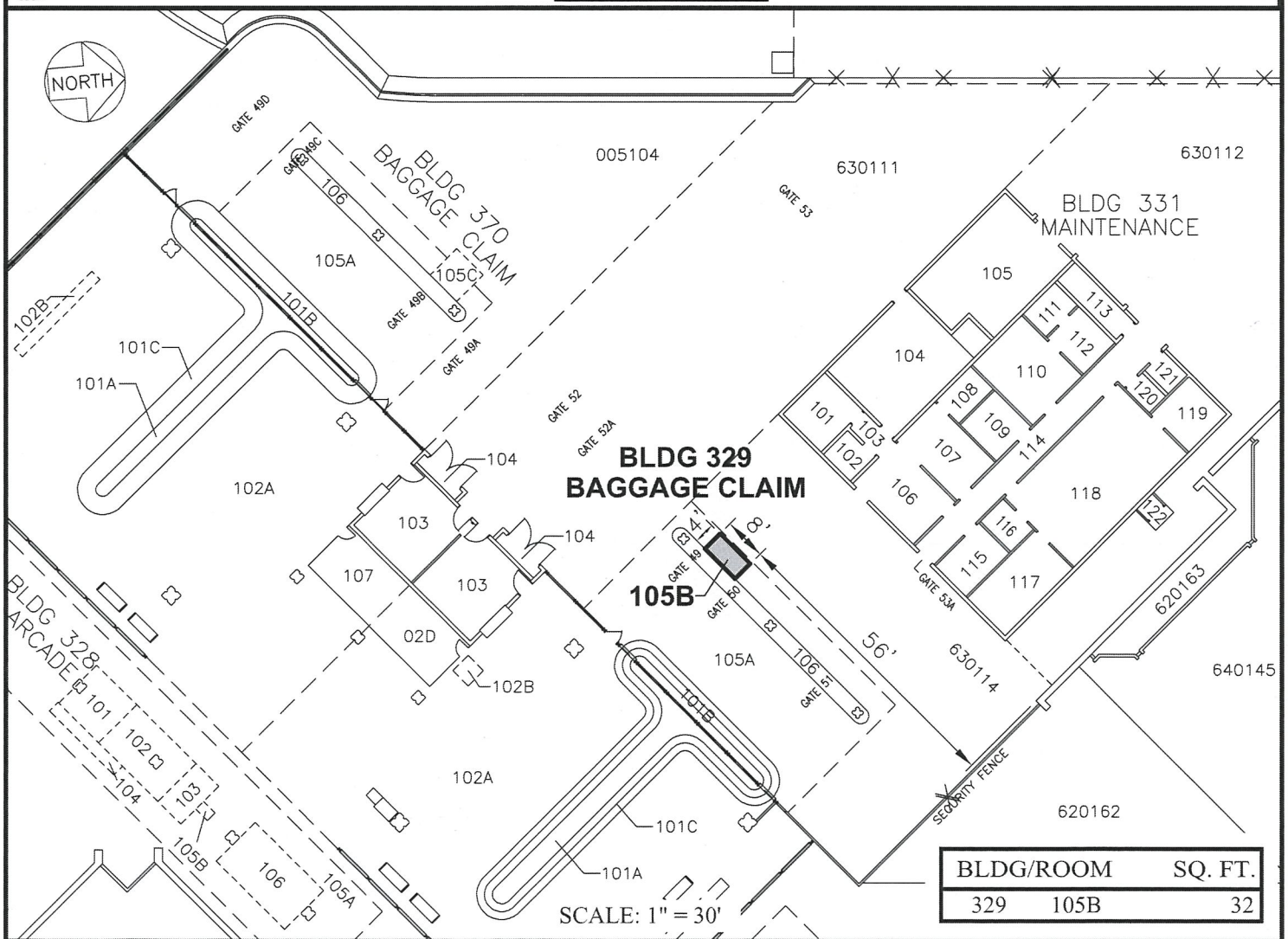


SUZANNE D. CASE
Chairperson and Member



LOCATION PLAN

600:1



RP-8918

DATE : SEPTEMBER 2019

EXHIBIT: **A**



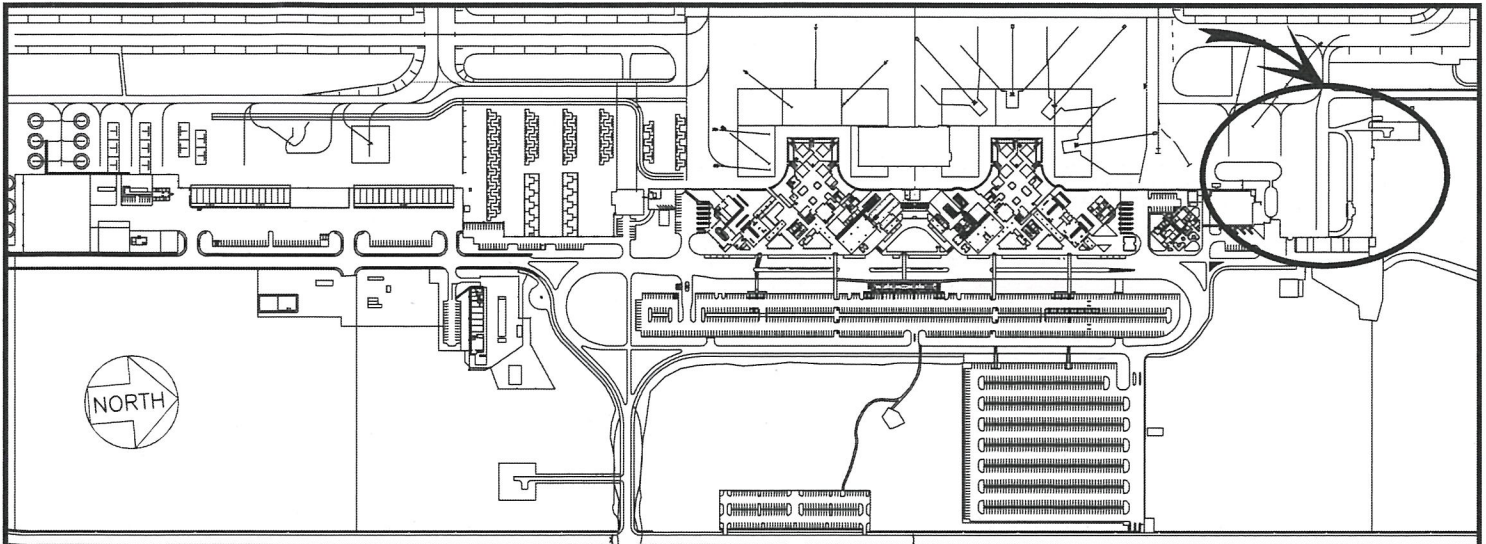
Airports Division

UNITED AIRLINES, INC.

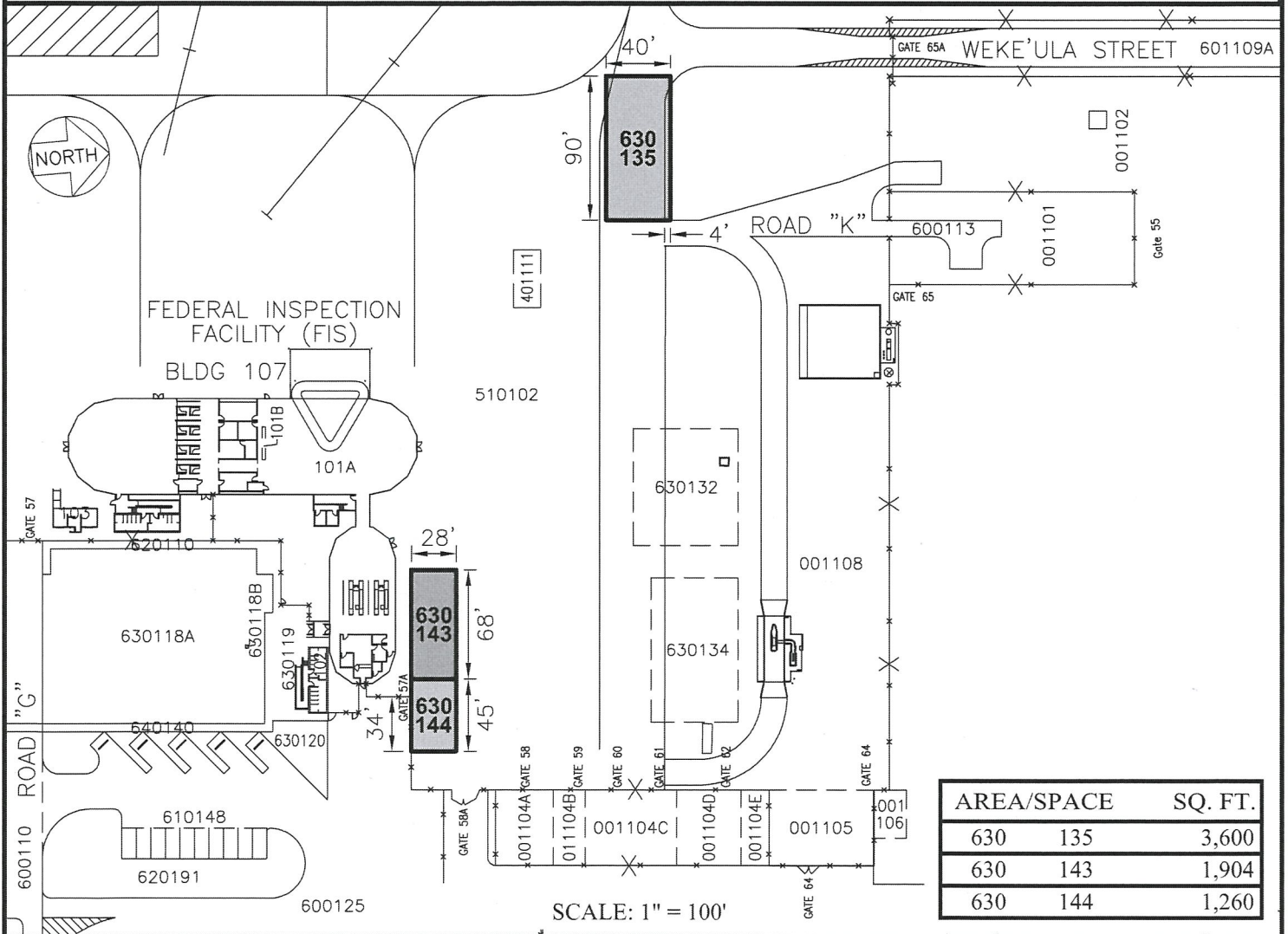
**BUILDING 329
BAGGAGE CLAIM
GROUND LEVEL**

329105B


PLATS E1, 58



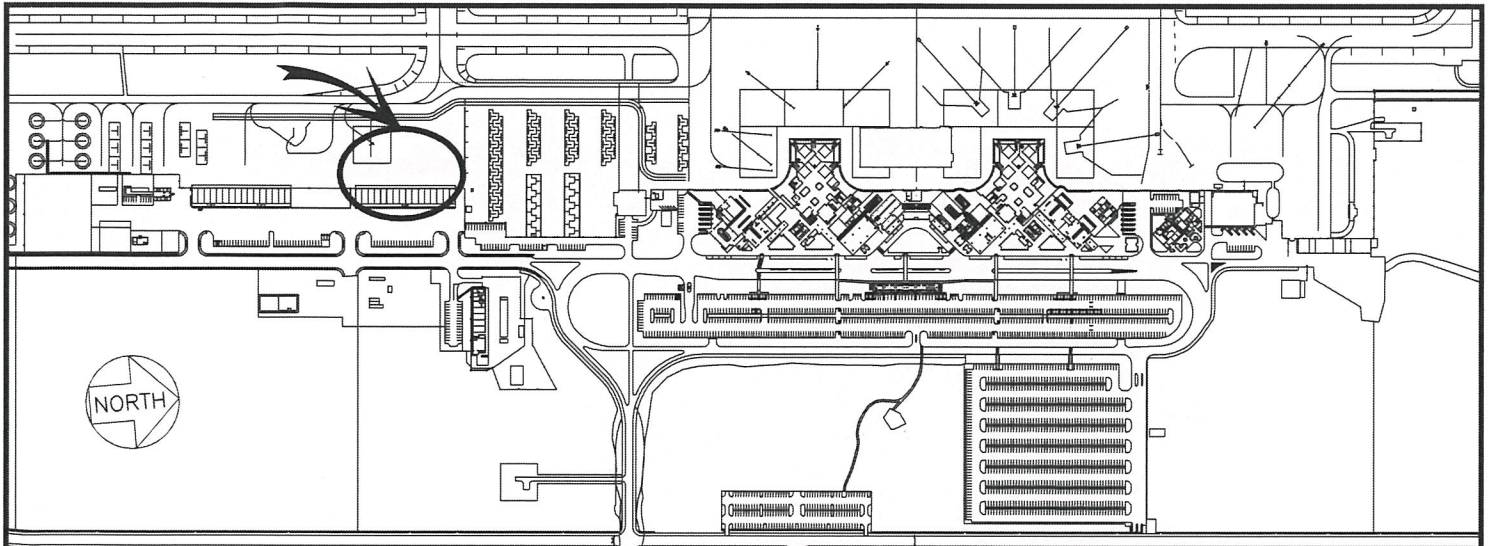
LOCATION PLAN



SCALE: 1" = 100'

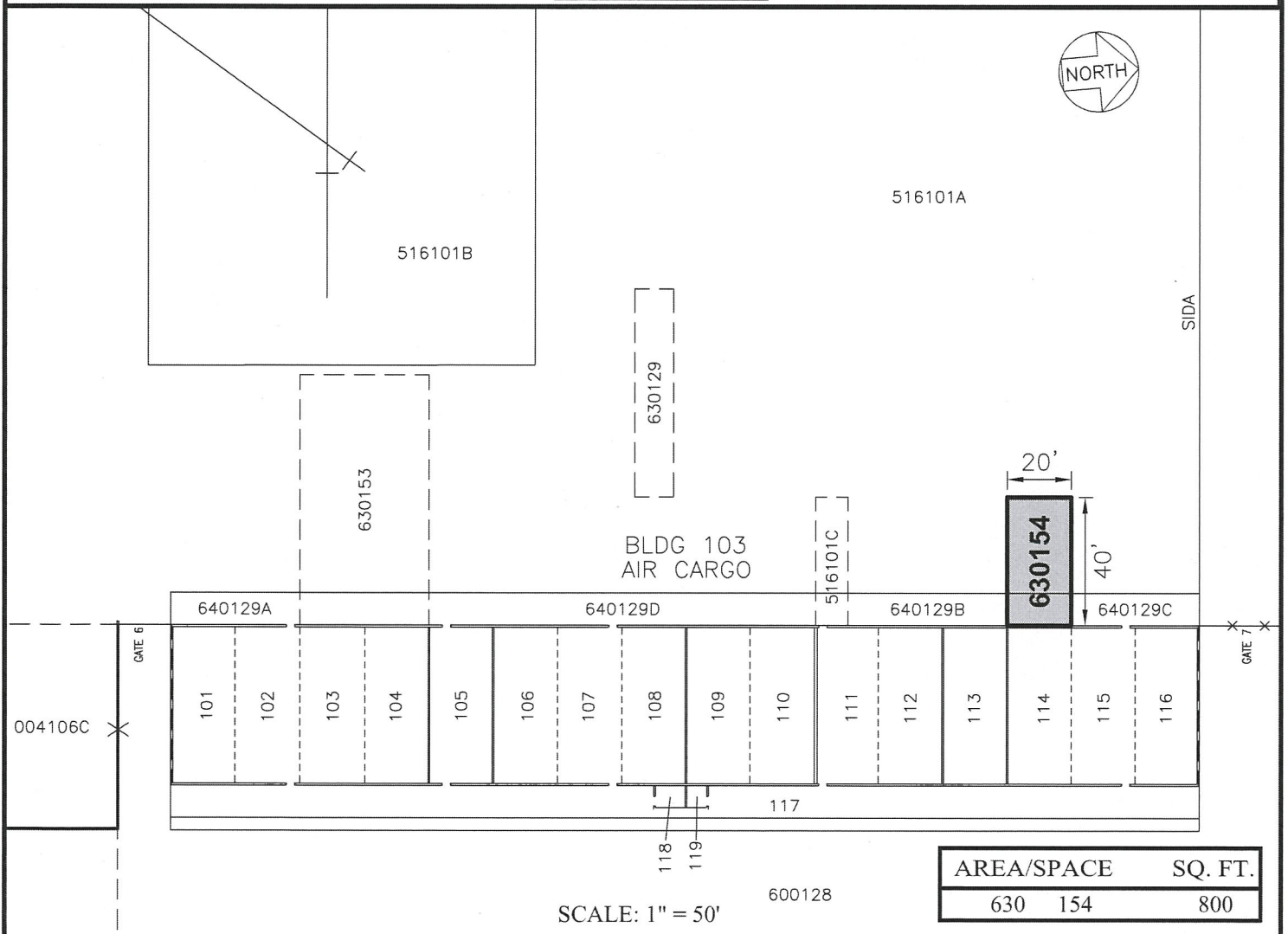
RP-8918	DATE : SEPTEMBER 2019	EXHIBIT: B
 Airports Division	UNITED AIRLINES, INC.	PAVED AREA GROUND LEVEL 630135 630143 630144 PLATS F1, 38, 58

N:\AIRPORTS\KOA_Kono\CAD\PM\2019 United Airlines\koa_630135-02.dwg



LOCATION PLAN

600:1



AREA/SPACE	SQ. FT.
630 154	800

SCALE: 1" = 50'

600128

RP-8918

DATE : SEPTEMBER 2019

EXHIBIT: **C**



Airports Division

UNITED AIRLINES, INC.

PAVED AREA
GROUND LEVEL

630154

PLATS C1, 39