

DAVID Y. IGE
GOVERNOR



STATE OF HAWAII
DEPARTMENT OF TRANSPORTATION
869 PUNCHBOWL STREET
HONOLULU, HAWAII 96813-5097

JADE T. BUTAY
DIRECTOR

Deputy Directors
LYNN A. S. ARAKI-REGAN
DEREK J. CHOW
ROSS M. HIGASHI
EDWIN H. SNIFFEN

IN REPLY REFER TO:

Board of Land and
Natural Resources
State of Hawai'i
Honolulu, Hawai'i

ISSUANCE OF A REVOCABLE PERMIT FOR OFFICE SPACE
TO SUPPORT ITS FIXED-BASED OPERATION
BRADLEY PACIFIC AVIATION, INC.
DBA SIGNATURE FLIGHT SUPPORT
HILO INTERNATIONAL AIRPORT
TAX MAP KEY: (3) 2-1-12: PORTION OF 90

HAWAI'I

LEGAL REFERENCE:

Section 171-55, Hawai'i Revised Statutes (HRS).

APPLICANT:

Bradley Pacific Aviation, Inc. dba Signature Flight Support ("BPI") whose business address is 98 Kapalulu Place, Honolulu, Hawai'i 96819.

LOCATION AND TAX MAP KEY:

Portion of Hilo International Airport (ITO), Hilo, Island of Hawai'i, identified by Tax Map Key: 3rd Division, 2-1-12: Portion of 90.

AREA:

Building/Room No. 307-232B, containing an area of approximately 520 square feet, as shown on the attached Exhibit "A".

ZONING:

State Land Use District:
County of Hawai'i:

Urban
Industrial (ML-20)

ITEM M-11

BLNR – ISSUANCE OF A REVOCABLE PERMIT FOR OFFICE SPACE TO SUPPORT ITS
FIXED-BASED OPERATION
BRADLEY PACIFIC AVIATION, INC. DBA SIGNATURE FLIGHT SUPPORT
HILO INTERNATIONAL AIRPORT
PAGE 2

LAND TITLE STATUS:

Section 5(a) lands of the Hawai'i Admission Act: Ceded
DHHL 30% entitlement lands pursuant to Hawai'i Admission Act YES ___ NO X

CURRENT USE STATUS:

Airport purposes.

CHARACTER OF USE:

BPI will use the space as an office for its fixed based operator operation.

COMMENCEMENT DATE:

Upon complete execution of the revocable permit.

MONTHLY RENTAL:

\$1,008.80 (as determined from the DOTA schedule of rates and charges established by appraisal of Airports property statewide).

SECURITY DEPOSIT:

Three (3) times the monthly rental in effect.

DCCA VERIFICATION:

Place of business registration confirmed: YES
Registered business name confirmed: YES
Good standing confirmed: YES

CHAPTER 343, HRS - ENVIRONMENTAL ASSESSMENT:

Pursuant to Section 11-200-8(a), Environmental Impact Statement Rules of the Department of Health, State of Hawai'i, this disposition is exempt from requirements regarding preparation of an environmental assessment, negative declaration, or environmental impact statement as required by Chapter 343, Hawai'i Revised Statutes, as amended, relating to Environmental Impact Statements, because the proposed action falls within Exemption Class #1, Comprehensive Exemption List for the State of Hawai'i, Department of Transportation, dated November 15, 2000, as approved by the Environmental Quality Council. Exemption Class #1 covers operations, repairs, or

BLNR – ISSUANCE OF A REVOCABLE PERMIT FOR OFFICE SPACE TO SUPPORT ITS
FIXED-BASED OPERATION
BRADLEY PACIFIC AVIATION, INC. DBA SIGNATURE FLIGHT SUPPORT
HILO INTERNATIONAL AIRPORT
PAGE 3

maintenance of existing structures, facilities, equipment, or topographical features involving negligible or no expansion or change of use beyond that previously existing.

The DOTA consulted with the U.S. Federal Aviation Administration as to the appropriateness of the citation of the Environmental Exemption Class from the Comprehensive list for the Department of Transportation dated November 15, 2000. In this case, the FAA concurred on the appropriateness.

REMARKS:

In accordance with Section 171-55, HRS, relating to Permits, the DOT proposes to issue a month-to-month revocable permit to BPI, for an office for its fixed-based operation at ITO.

RECOMMENDATION:

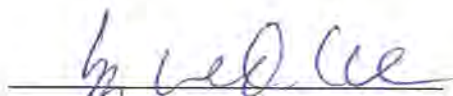
That the Board authorizes the Department of Transportation to issue a revocable permit to BPI, subject to: (1) terms and conditions herein outlined, which are by reference incorporated herein; and (2) such other terms and conditions as may be prescribed by the Director of Transportation to best serve the interests of the State.

Respectfully submitted,

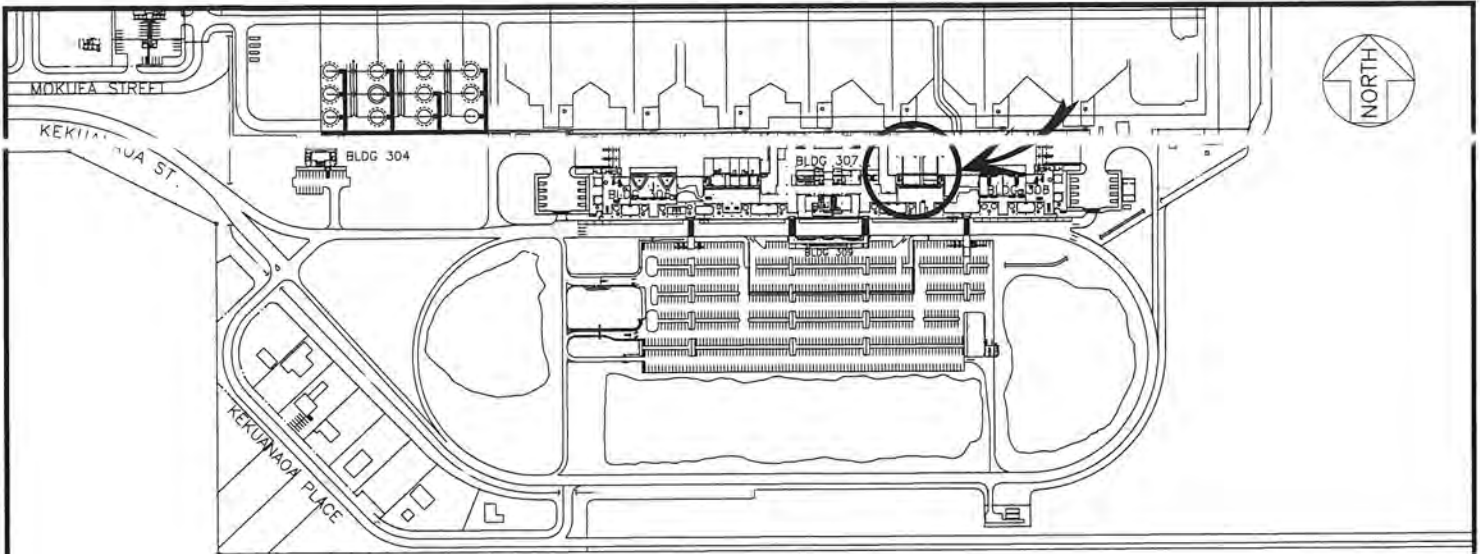


JADE T. BUTAY
Director of Transportation

APPROVED FOR SUBMITTAL:

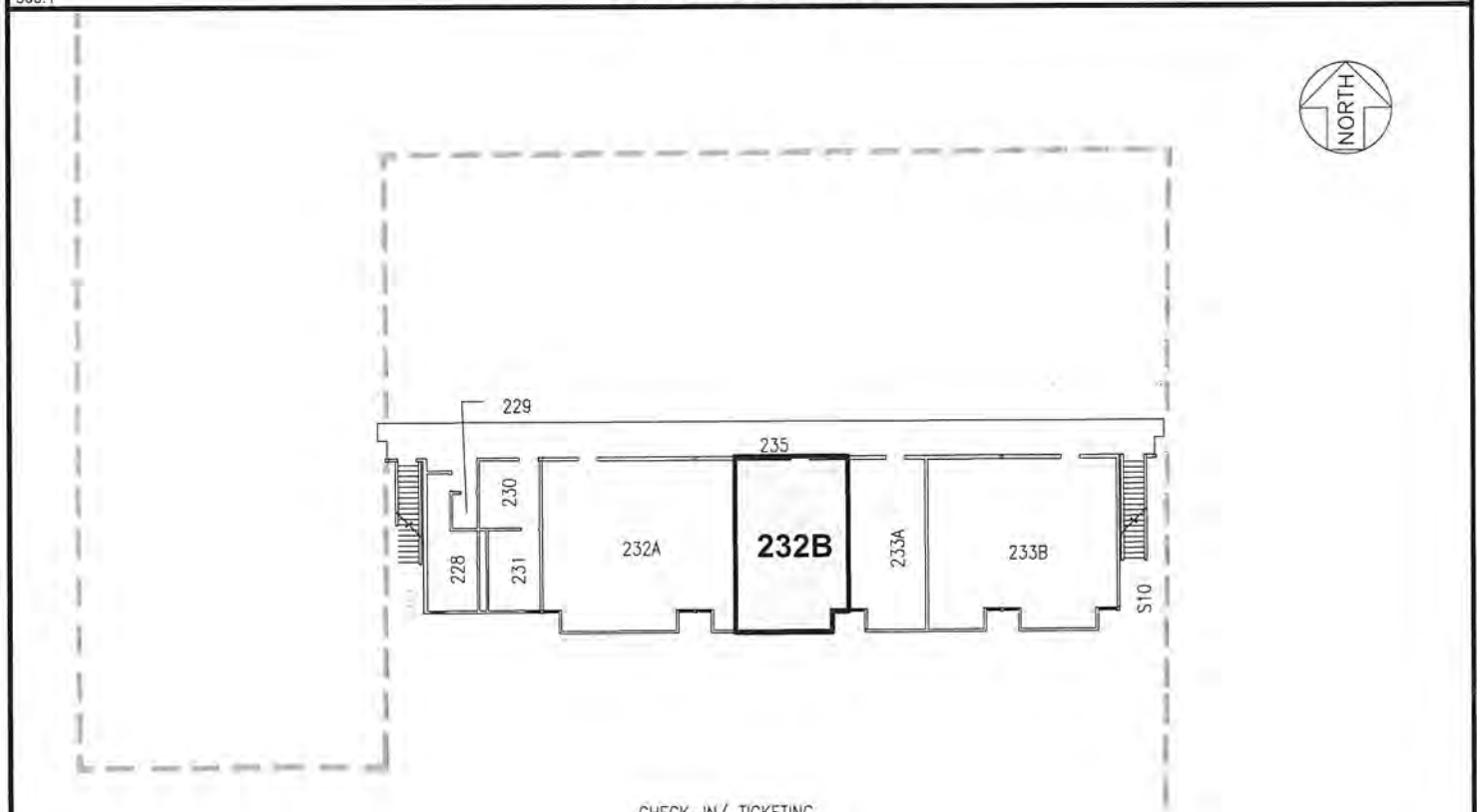


SUZANNE D. CASE
Chairperson and Member



LOCATION PLAN

500:1



CHECK-IN/ TICKETING

BLDG B-7

SCALE: 1" = 30'

BLDG/ROOM	SQ. FT.
307 232B	520

DATE : JUNE 2019

EXHIBIT: **A**



BRADLEY PACIFIC AVIATION

BUILDING B-7
CHECK-IN/TICKETING
SECOND LEVEL

307232B
PLATS C2, 42

HILO INTERNATIONAL AIRPORT