



STATE OF HAWAII
DEPARTMENT OF TRANSPORTATION
869 PUNCHBOWL STREET
HONOLULU, HAWAII 96813-5097

IN REPLY REFER TO:

Board of Land and
Natural Resources
State of Hawai'i
Honolulu, Hawai'i

ISSUANCE OF A REVOCABLE PERMIT
FOR A FIELD OFFICE AND VEHICLE PARKING
SSFM INTERNATIONAL, INC.
ELLISON ONIZUKA KONA INTERNATIONAL AIRPORT AT KEĀHOLE
TAX MAP KEY: (3) 7-3-43:003 (PORTION) HAWAI'I

LEGAL REFERENCE:

Section 171-55, Hawai'i Revised Statutes.

APPLICANT:

SSFM International, Inc. (SSFM), whose business address is 99 Aupuni Street, Suite 202,
Hilo, Hawai'i 96720.

LOCATION AND TAX MAP KEY:

Portion of Ellison Onizuka Kona International Airport at Keāhole (KOA), Kailua-Kona,
Island of Hawai'i, identified by Tax Map Key: 3rd Division, 7-3-43:003 (Portion).

AREA:

Area/Space No. 003-125, containing an area of approximately 900 square feet; and
Area/Space No. 003-126, containing an area of approximately 320 square feet, as shown on
the attached Exhibit A.

ZONING:

State Land Use District:	Urban & Conservation
County of Hawai'i:	Industrial (MG-1a) and Open

BLNR – ISSUANCE OF A REVOCABLE PERMIT FOR A FIELD OFFICE AND VEHICLE PARKING, SSFM INTERNATIONAL, INC.

Page 2

LAND TITLE STATUS:

Section 5(b) lands of the Hawai‘i Admission Act: Ceded

DHHL 30% entitlement lands pursuant to Hawai‘i Admission Act YES ___ NO X

CURRENT USE STATUS:

Airport and aeronautical purposes.

CHARACTER OF USE:

SSFM will use the spaces for a field office and vehicle parking, as specifically stated in State Project Not AH2023-15, Construction Management Services for South Ramp Taxiway and Ramp Improvements.

COMMENCEMENT DATE:

Upon execution of the revocable permit.

MONTHLY RENTAL:

\$25.00 (per State Project No. AH2023-15, Section 1.4, relating to Field Office).

SECURITY DEPOSIT:

\$75.00, or three times the monthly rental in effect.

DCCA VERIFICATION:

Place of business registration confirmed:	YES <u>X</u>	NO _____
Registered business name confirmed:	YES <u>X</u>	NO _____
Good standing confirmed:	YES <u>X</u>	NO _____

CHAPTER 343, HRS - ENVIRONMENTAL ASSESSMENT:

Pursuant to Section 11-200-8(a), Environmental Impact Statement Rules of the Department of Health, State of Hawai‘i, this disposition is exempt from requirements regarding preparation of an environmental assessment, negative declaration, or environmental impact statement as required by Chapter 343, Hawai‘i Revised Statutes, as amended, relating to Environmental Impact Statements, because the proposed action falls within Exemption Class #1, Comprehensive Exemption List for the State of Hawai‘i, Department of Transportation, dated November 15, 2000, as approved by the Environmental Quality Council. Exemption Class #1 covers operations, repairs, or

BLNR – ISSUANCE OF A REVOCABLE PERMIT FOR A FIELD OFFICE AND VEHICLE PARKING, SSFM INTERNATIONAL, INC.

Page 3

maintenance of existing structures, facilities, equipment, or topographical features involving negligible or no expansion or change of use beyond that previously existing.

The DOTA consulted with the U.S. Federal Aviation Administration as to the appropriateness of the citation of the Environmental Exemption Class from the Comprehensive list for the Department of Transportation dated November 15, 2000. In this case, the FAA concurred on the appropriateness.

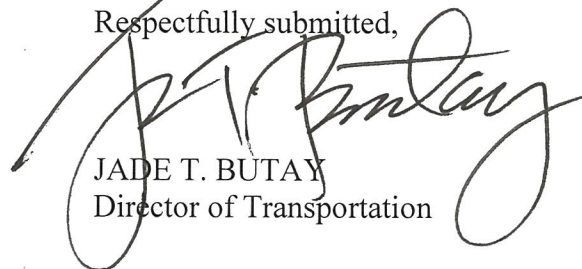
REMARKS:

In accordance with Section 171-55, HRS, relating to Permits, the Department of Transportation proposes to issue a month-to-month revocable permit to SSFM for its field office and vehicle parking, as specifically stated under State Project No. AH2023-15, Section 1.4 (Field Office), “Pending the availability of space on airport property, the STATE will issue Revocable Permit(s) to the CONTRACTOR for the use of the space, assessed at a monthly fee of \$25 for each Revocable Permit issued. The space(s) shall be used only for a field office, and subject to the approval of the State, vehicle parking may be allowed.”

RECOMMENDATION:

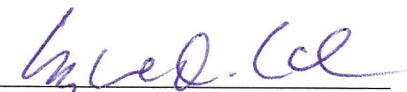
That the Board authorize the Department of Transportation to issue a month-to-month revocable permit to SSFM, subject to: (1) terms and conditions herein outlined, which are by reference incorporated herein; and (2) such additional terms and conditions as may be prescribed by the Director of Transportation to best serve the interests of the State.

Respectfully submitted,



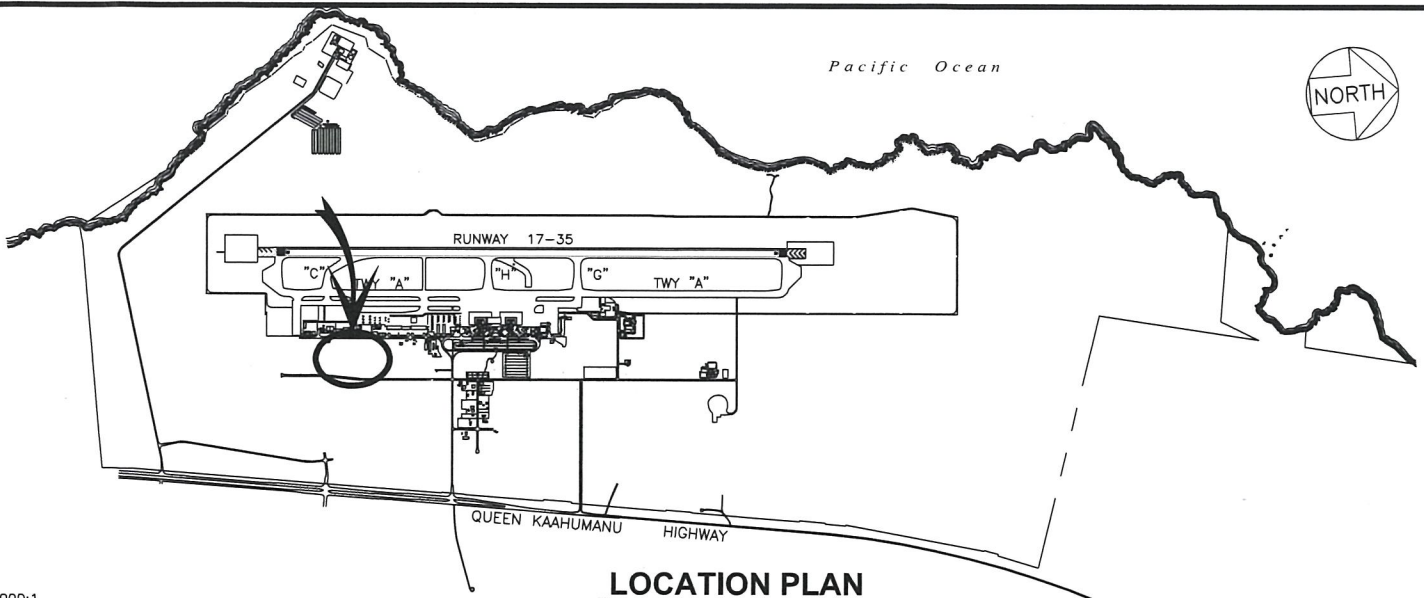
JADE T. BUTAY
Director of Transportation

APPROVED FOR SUBMITTAL:



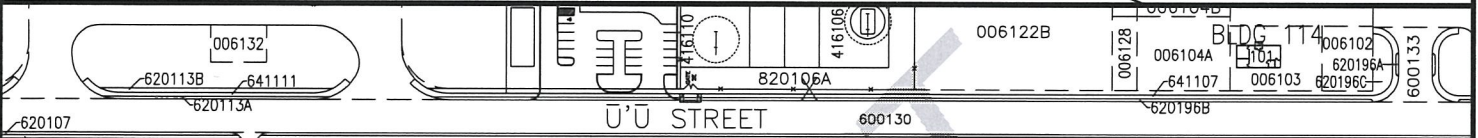
SUZANNE D. CASE
Chairperson and Member

Pacific Ocean



LOCATION PLAN

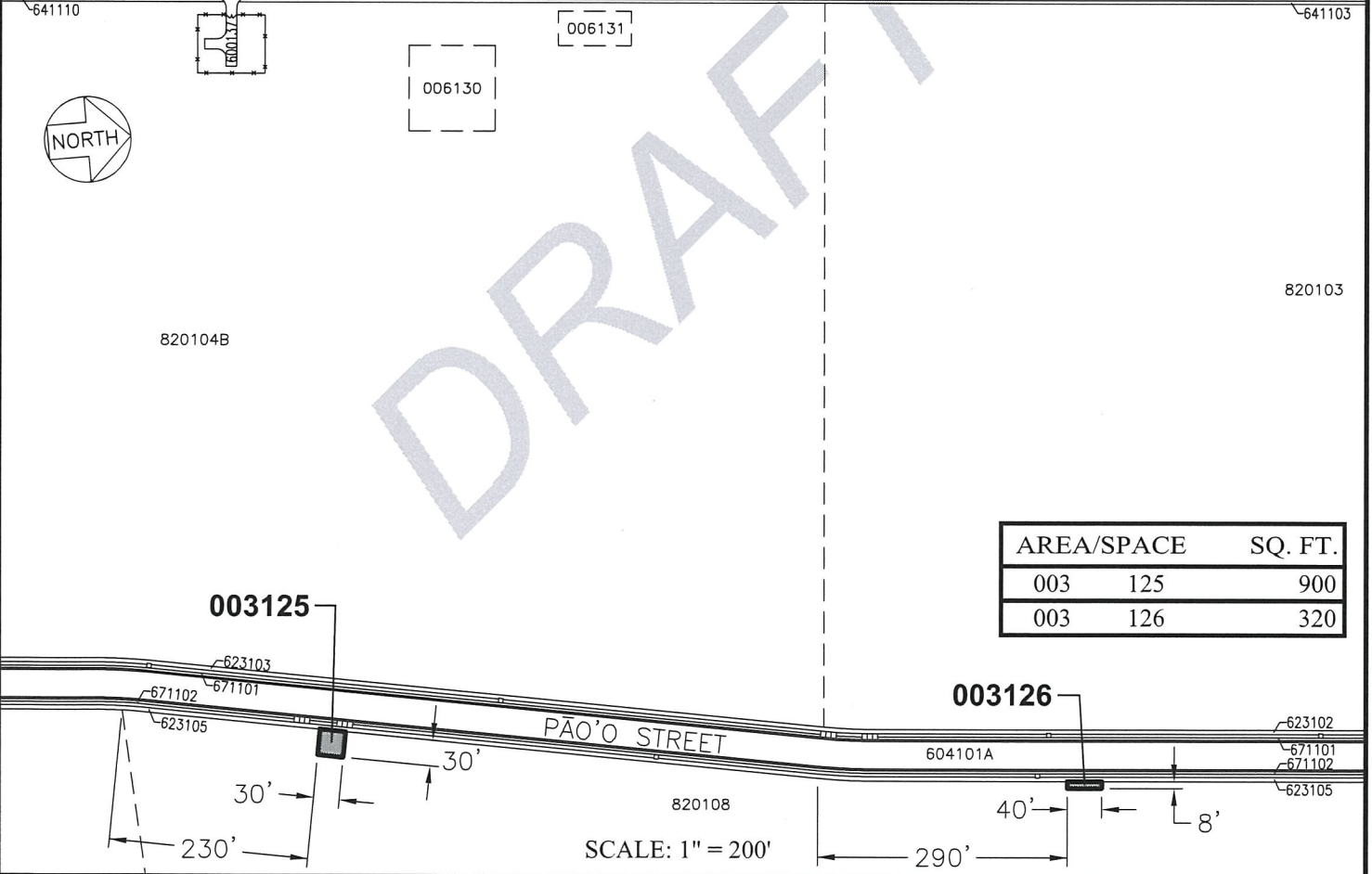
4000:1



U'U STREET



DRAFT



AREA/SPACE	SQ. FT.
003 125	900
003 126	320

SCALE: 1" = 200'

DRAFT

DATE : NOVEMBER 2019

EXHIBIT: **A**



Airports Division

SSFM INTERNATIONAL, INC.

LOTS

003125
003126
PLATS 59, 60

ELLISON ONIZUKA KONA INTERNATIONAL AIRPORT AT KEAHOLE