



STATE OF HAWAII
DEPARTMENT OF TRANSPORTATION
869 PUNCHBOWL STREET
HONOLULU, HAWAII 96813-5097

IN REPLY REFER TO:

Board of Land and
Natural Resources
State of Hawai'i
Honolulu, Hawai'i

ISSUANCE OF A REVOCABLE PERMIT FOR A T-HANGAR
FOR STORAGE AND MAINTENANCE OF AIRCRAFT
SOUTH PACIFIC FLYING CLUB, LLC
DANIEL K. INOUYE INTERNATIONAL AIRPORT
TAX MAP KEY: (1) 1-1-76: PORTION OF 22

O'AHU

REQUEST:

Issuance of a Revocable Permit for a T-Hangar for storage and maintenance of aircraft to South Pacific Flying Club, LLC, situated at Daniel K. Inouye International Airport.

LEGAL REFERENCE:

Section 171-55, Hawai'i Revised Statutes (HRS).

APPLICANT:

South Pacific Flying Club, LLC, whose address is 66-437 Kamehameha Highway, #1059, Haleiwa, Hawai'i 96712.

LOCATION AND TAX MAP KEY:

A portion of Daniel K. Inouye International Airport, Island of Oahu, State of Hawai'i, identified by Tax Map Key: 1st Division, 1-1-76: portion of 22.

AREA:

Building/Room No. 422-106, containing an area of approximately 1,255 square feet, as shown and delineated on the attached map labeled Exhibit "A".

ZONING:

State Land Use District: Urban
City and County of Honolulu LUO: Industrial (I-2)

ITEM M-3

BLNR – ISSUANCE OF A REVOCABLE PERMIT FOR A T-HANGAR
FOR STORAGE AND MAINTENANCE OF AIRCRAFT
SOUTH PACIFIC FLYING CLUB, LLC
Page 2

LAND TITLE STATUS:

Non-Ceded - Section 5(a) lands of the Hawai'i Admission Act
DHHL 30% entitlement lands pursuant to Hawai'i Admission Act YES ___ NO X

CURRENT USE STATUS:

Land presently encumbered by Governor's Executive Order No. 3201, dated June 8, 1983, setting aside 3,152.177 acres designated as Daniel K. Inouye International Airport under the control and management of the State of Hawai'i, Department of Transportation, Airports Division (DOTA) for Airport Purposes.

CHARACTER OF USE:

T-Hangar for storage and maintenance of aircraft (2010 Czech Sport Aircraft AS Piper Sport, Tail No. N-2122P).

COMMENCEMENT DATE:

Upon execution of the revocable permit.

MONTHLY RENTAL:

\$772.00 (\$717.00, as determined from the DOTA schedule of rates and charges established by appraisal of Airports property statewide plus \$55.00 for electricity).

SECURITY DEPOSIT:

Three (3) times the monthly rental in effect.

CHAPTER 343, HRS - ENVIRONMENTAL ASSESSMENT:

Pursuant to Section 11-200-8(a), Environmental Impact Statement Rules of the Department of Health, State of Hawai'i, this disposition is exempt from requirements regarding preparation of an environmental assessment, negative declaration, or environmental impact statement as required by Chapter 343, Hawai'i Revised Statutes, as amended, relating to Environmental Impact Statements, because the proposed action falls within Exemption Class #1, Comprehensive Exemption List for the State of Hawai'i, Department of Transportation, dated November 15, 2000, as approved by the Environmental Quality Council. Exemption Class #1 covers operations, repairs, or maintenance of existing structures, facilities, equipment, or topographical features involving negligible or no expansion or change of use beyond that previously existing.

BLNR – ISSUANCE OF A REVOCABLE PERMIT FOR A T-HANGAR
FOR STORAGE AND MAINTENANCE OF AIRCRAFT
SOUTH PACIFIC FLYING CLUB, LLC

Page 3

The DOTA consulted with the U.S. Federal Aviation Administration (FAA) as to the appropriateness of the citation of the Environmental Exemption Class from the Comprehensive list for the Department of Transportation dated November 15, 2000. The FAA concurred on the appropriateness.

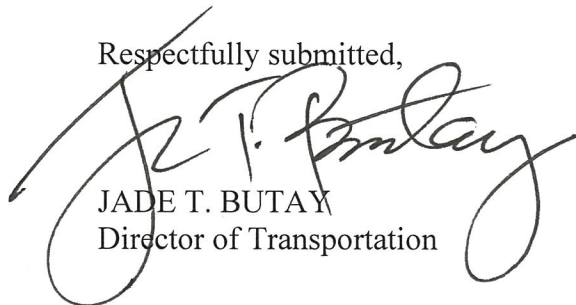
REMARKS:

The issuance of a revocable permit to South Pacific Flying Club, LLC for a T-Hangar for storage and maintenance of aircraft at Daniel K. Inouye International Airport complies with Chapter 343, Exemption Class 1.D.10 as a continuing aeronautical use, and is in accordance with Section 171-55, HRS, relating to Permits.

RECOMMENDATION:

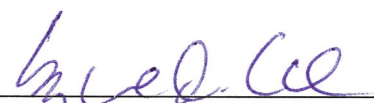
That the Board authorize the Department of Transportation to issue a month-to-month revocable permit to South Pacific Flying Club, LLC, subject to: (1) terms and conditions herein outlined, which are by reference incorporated herein; and (2) such additional terms and conditions as may be prescribed by the Director of Transportation to best serve the interests of the State.

Respectfully submitted,

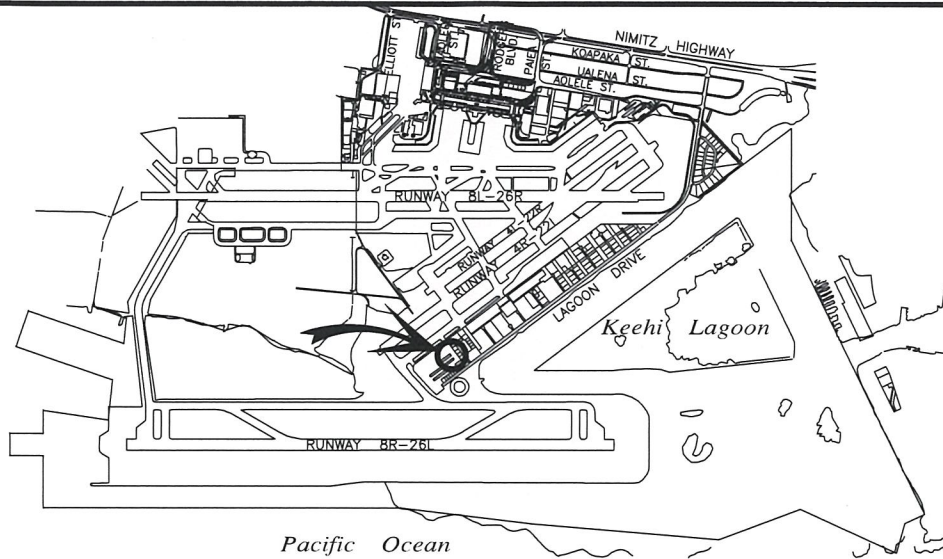


JADE T. BUTAY
Director of Transportation

APPROVED FOR SUBMITTAL:



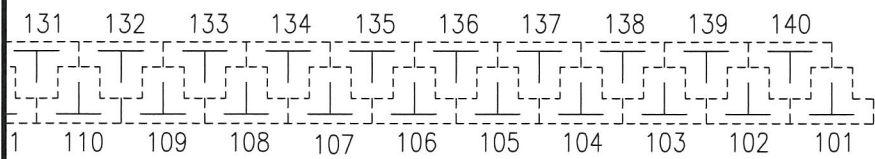
SUZANNE D. CASE
Chairperson and Member



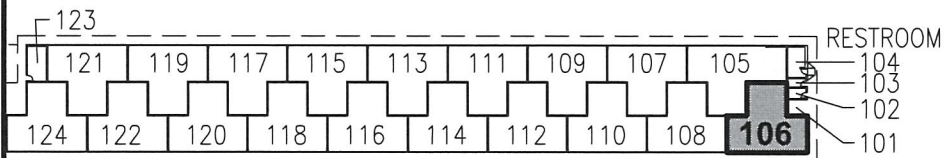
LOCATION PLAN

5000:1

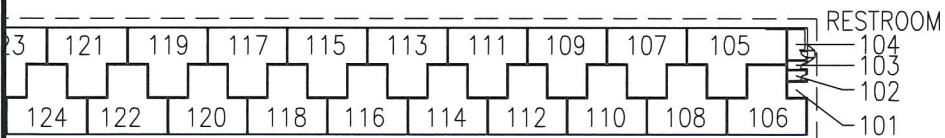
23-000



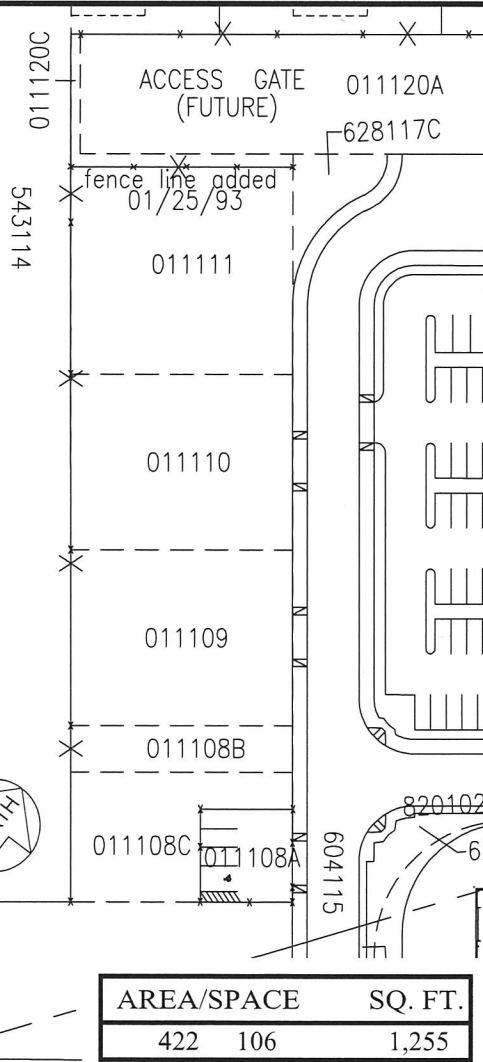
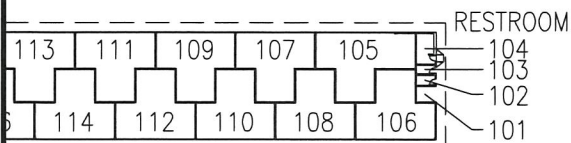
23-000



BLDG 422



BLDG 421



SCALE: 1" = 100'

AREA/SPACE	SQ. FT.
422 106	1,255

RP-8931

DATE : OCTOBER 2019

EXHIBIT: **A**



SOUTH PACIFIC FLYING CLUB, LLC

T-HANGAR
GENERAL AVIATION
SOUTH RAMP

422106
PLAT 45