



STATE OF HAWAII
DEPARTMENT OF TRANSPORTATION
869 PUNCHBOWL STREET
HONOLULU, HAWAII 96813-5097

JADE T. BUTAY
DIRECTOR

Deputy Directors
LYNN A.S. ARAKI-REGAN
DEREK J. CHOW
ROSS M. HIGASHI
EDWIN H. SNIFFEN

IN REPLY REFER TO:

Board of Land and
Natural Resources
State of Hawai'i
Honolulu, Hawai'i

ISSUANCE OF A REVOCABLE PERMIT FOR OFFICE, WAREHOUSE AND PARKING
FOR THE STORAGE OF CATERING SUPPLIES FOR AIRLINE OPERATIONS
SOUTHWEST AIRLINES CO.

DANIEL K. INOUE INTERNATIONAL AIRPORT

O'AHU

TAX MAP KEY: (1) 1-1-003: 015 (PORTION)

APPLICANT:

Southwest Airlines Co. (Southwest Airlines), whose business address is 2702 Love Field Drive, Dallas, Texas 75235.

LEGAL REFERENCE:

Section 171-55, Hawai'i Revised Statutes.

LOCATION AND TAX MAP KEY:

Building No. 132, Cargo Building, Ground Level and Second Level at Daniel K. Inouye International Airport, Island of Oahu, State of Hawai'i, identified by Tax Map Key: 1st Division, 1-1-003: 015 (Portion).

AREA:

Bldg/Room No. 132-103A, containing an area of approximately 3,534 square feet;
Bldg/Room No. 132-103B, containing an area of approximately 2,746 square feet;
Bldg/Room No. 132-113, containing an area of approximately 127 square feet;
Bldg/Room No. 614-106A, containing an area of approximately 443 square feet;
Bldg/Room No. 614-106B, containing an area of approximately 443 square feet;
Bldg/Room No. 614-106C, containing an area of approximately 443 square feet;
Bldg/Room No. 614-106D, containing an area of approximately 437 square feet;
as shown and delineated on the attached map labeled Exhibit "A"; and

Bldg/Room No. 132-201, containing an area of approximately 523 square feet;
Bldg/Room No. 132-202, containing an area of approximately 1,387 square feet;
as shown and delineated on the attached map labeled Exhibit "B".

ITEM M-4

BLNR – ISSUANCE OF A REVOCABLE PERMIT FOR OFFICE, WAREHOUSE AND PARKING
FOR THE STORAGE OF CATERING SUPPLIES FOR AIRLINE OPERATIONS
SOUTHWEST AIRLINES CO.

Page 2

ZONING:

State Land Use District: Urban
City and County of Honolulu LUO: Industrial (I-2)

LAND TITLE STATUS:

Non-Ceded - Section 5(b) lands of the Hawai'i Admission Act
DHHL 30% entitlement lands pursuant to Hawai'i Admission Act YES ____ NO X

CURRENT USE STATUS:

Land presently encumbered by Governor's Executive Order No. 3201, dated June 8, 1983, setting aside 3,152.177 acres designated as Daniel K. Inouye International Airport under the control and management of the State of Hawai'i, Department of Transportation, Airports Division (DOTA) for Airport Purposes.

CHARACTER OF USE:

Southwest Airlines will use warehouse and office spaces for the storage of catering supplies and parking for its airline operations at Daniel K. Inouye International Airport.

COMMENCEMENT DATE:

Upon execution of the revocable permit.

MONTHLY RENTAL:

\$10,611.40 based upon rates of \$15.60 per square foot per annum for office spaces, \$14.40 per square foot per annum for warehouse spaces and \$110.00 per parking space as determined from the DOTA schedule of rates and charges established by appraisal of Airports property statewide.

SECURITY DEPOSIT:

Three (3) times the monthly rental in effect.

DCCA VERIFICATION:

Place of business registration confirmed:	YES <u>X</u>	NO ____
Registered business name confirmed:	YES <u>X</u>	NO ____
Good standing confirmed:	YES <u>X</u>	NO ____

CHAPTER 343, HRS - ENVIRONMENTAL ASSESSMENT:

Pursuant to Section 11-200-8(a), Environmental Impact Statement Rules of the Department of Health, State of Hawai'i, this disposition is exempt from requirements regarding preparation

BLNR – ISSUANCE OF A REVOCABLE PERMIT FOR OFFICE, WAREHOUSE AND PARKING
FOR THE STORAGE OF CATERING SUPPLIES FOR AIRLINE OPERATIONS
SOUTHWEST AIRLINES CO.

Page 3

of an environmental assessment, negative declaration, or environmental impact statement as required by Chapter 343, Hawai'i Revised Statutes, as amended, relating to Environmental Impact Statements, because the proposed action falls within Exemption Class #1, Comprehensive Exemption List for the State of Hawai'i, Department of Transportation, dated November 15, 2000, as approved by the Environmental Quality Council. Exemption Class #1 covers operations, repairs, or maintenance of existing structures, facilities, equipment, or topographical features involving negligible or no expansion or change of use beyond that previously existing.

The DOTA consulted with the U.S. Federal Aviation Administration (FAA) as to the appropriateness of the citation of the Environmental Exemption Class from the Comprehensive list for the Department of Transportation dated November 15, 2000. The FAA concurred on the appropriateness.

REMARKS:

In accordance with Section 171-55 HRS, relating to Permits, the Department of Transportation proposes to issue a month-to-month revocable permit to Southwest Airlines for warehouse and office spaces for the storage of catering supplies and parking for airline operations at Daniel K. Inouye International Airport. Southwest Airlines is a signatory airline carrier with airline operations located mainly within the Overseas Terminal.

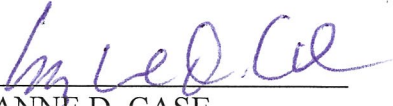
RECOMMENDATION:

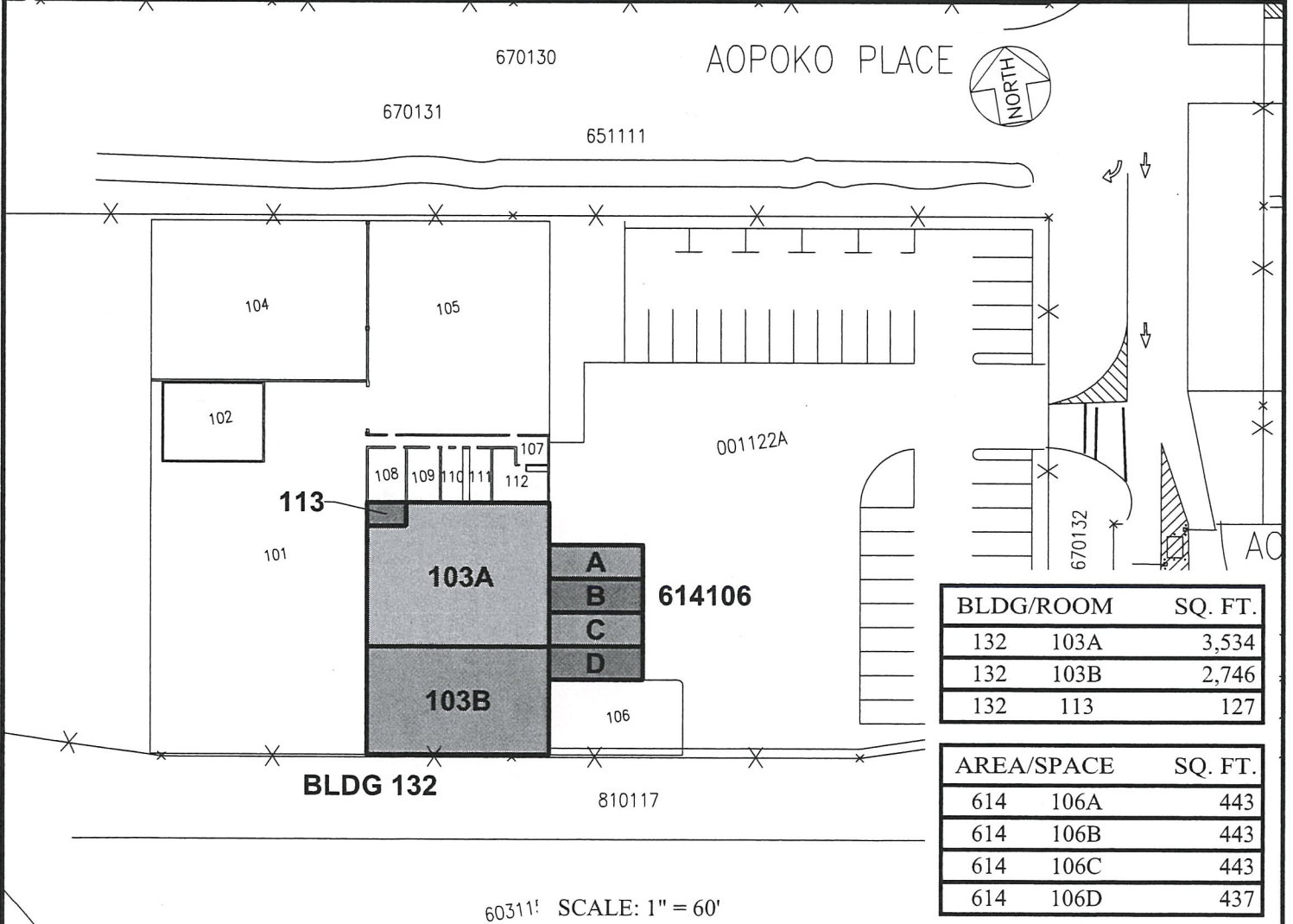
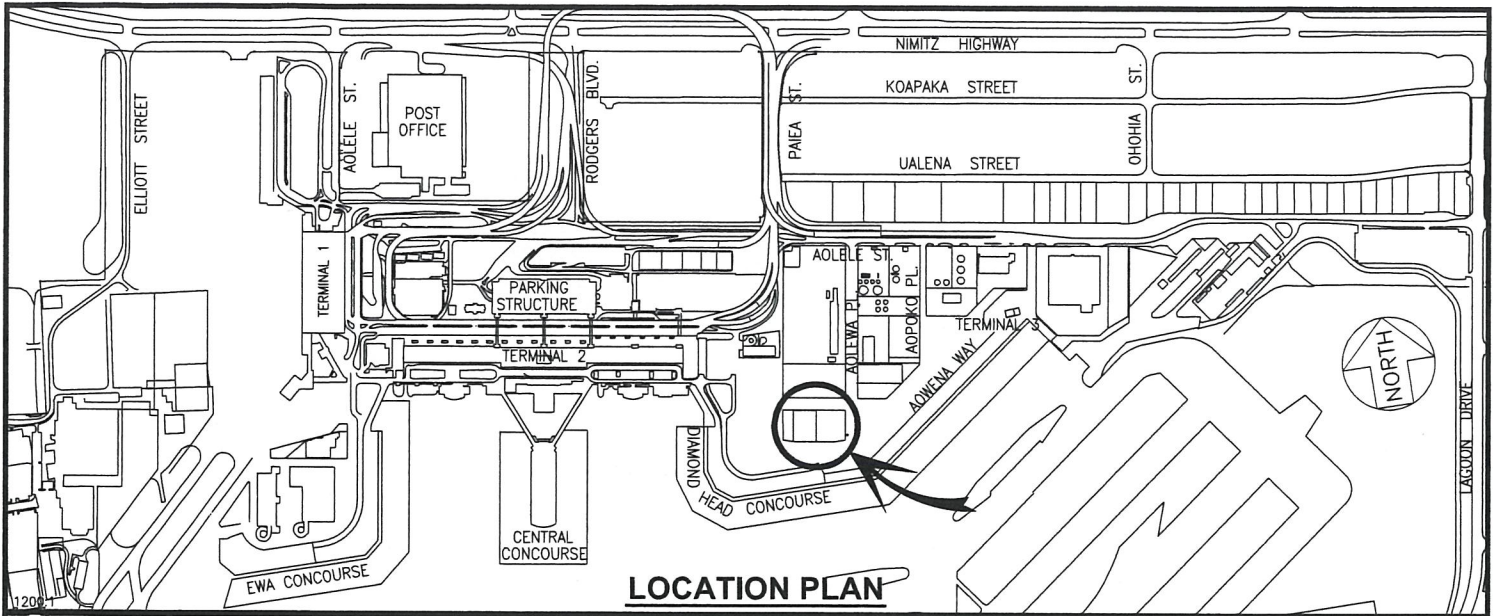
That the Board authorize the Department of Transportation to issue a month-to-month revocable permit to Southwest Airlines, subject to: (1) terms and conditions herein outlined, which are by reference incorporated herein; and (2) such additional terms and conditions as may be prescribed by the Director of Transportation to best serve the interests of the State.

Respectfully submitted,


JADE T. BUTAY
Director of Transportation

APPROVED FOR SUBMITTAL:


SUZANNE D. CASE
Chairperson and Member



RP-8938

DATE : OCTOBER 2019

EXHIBIT: **A**



Airports Division

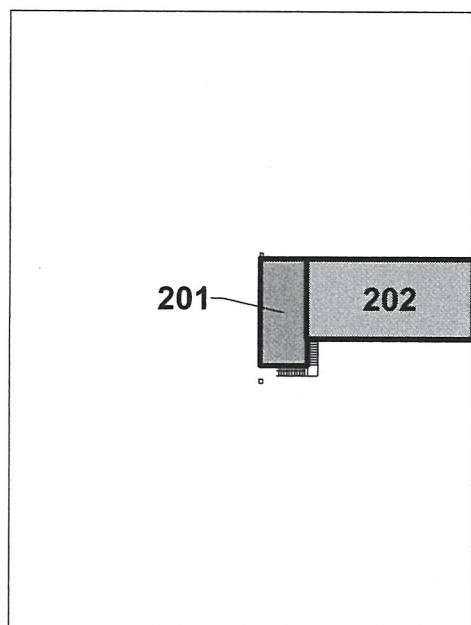
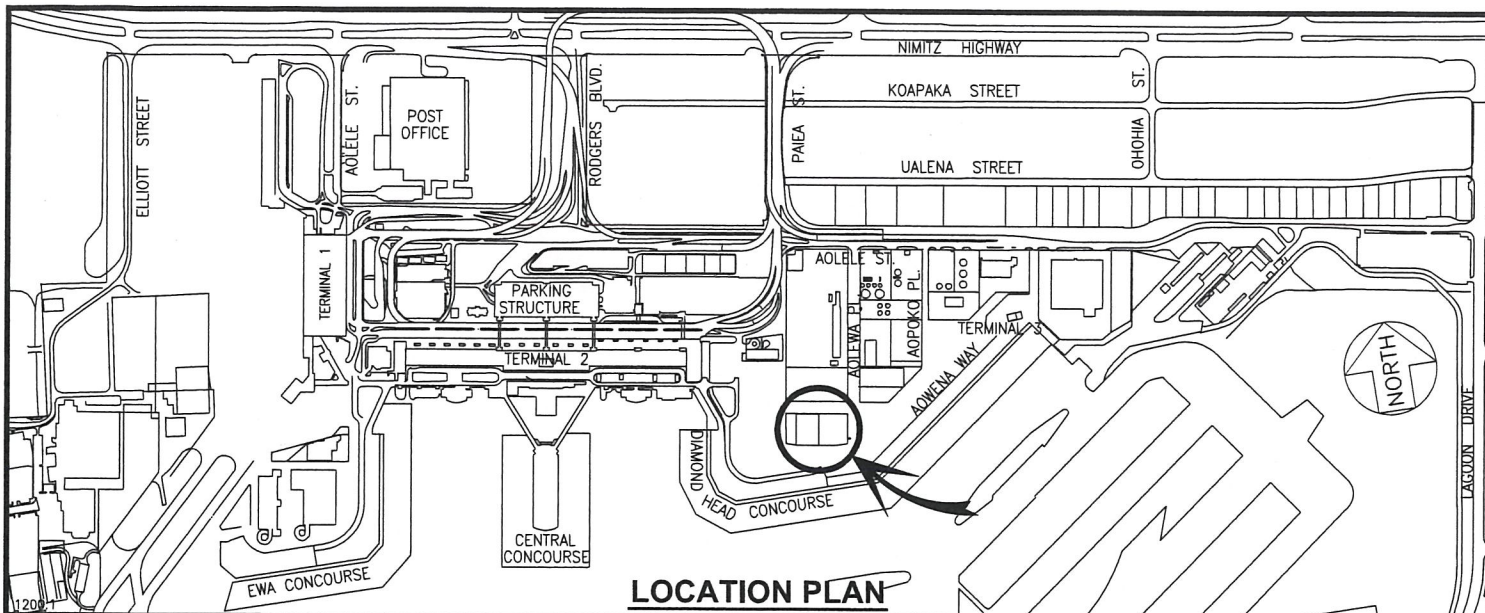
SOUTHWEST AIRLINES CO.

**BUILDING 132
CARGO BUILDING
GROUND LEVEL**

**132103A,B
132113
614106A-D
PLAT M1**

DANIEL K. INOUE INTERNATIONAL AIRPORT

N:\AIRPORTS\HNL_HONOLULU\CAD\PM\HNL_132103A-01.DWG



BLDG 132

SCALE: 1" = 60'

BLDG/ROOM		SQ. FT.
132	201	523
132	202	1,387

RP-8938

DATE : OCTOBER 2019

EXHIBIT: **B**



Airports Division

SOUTHWEST AIRLINES CO.

**BUILDING 132
CARGO BUILDING
SECOND LEVEL**

132201
132202

PLAT M2

DANIEL K. INOUE INTERNATIONAL AIRPORT

N:\AIRPORTS\HNL_HONOLULU\CAD\PM\HNL_132201-01.DWG