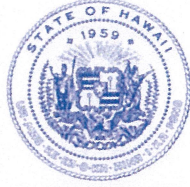


DAVID Y. IGE
GOVERNOR



STATE OF HAWAII
DEPARTMENT OF TRANSPORTATION
869 PUNCHBOWL STREET
HONOLULU, HAWAII 96813-5097

JADE T. BUTAY
DIRECTOR

Deputy Directors
LYNN A.S. ARAKI-REGAN
DEREK J. CHOW
ROSS M. HIGASHI
EDWIN H. SNIFFEN

IN REPLY REFER TO:

Board of Land and
Natural Resources
State of Hawai'i
Honolulu, Hawai'i

ISSUANCE OF A REVOCABLE PERMIT FOR RAMP SPACE FOR
CONTAINER STORAGE
HELICOPTER TRANSPORT SERVICES, LLC
KALAELOA AIRPORT
TAX MAP KEY: (1) 9-1-13: PORTION OF 32

O'AHU

REQUEST:

Issuance of a Revocable Permit for ramp space for storage of a container for equipment and supplies for a commercial heavy-lift helicopter operations company as part of the contract for the repair and expansion of HECO's electric grid system on Oahu to Helicopter Transport Services, LLC, situated at Kalaeloa Airport.

LEGAL REFERENCE:

Section 171-55, Hawai'i Revised Statutes (HRS).

APPLICANT:

Helicopter Transport Services, LLC, whose mailing address is 14497 Keil Road, NE, Aurora, Oregon 97002.

LOCATION AND TAX MAP KEY:

A portion of Kalaeloa Airport, Kapolei, Island of O'ahu, State of Hawai'i, identified by Tax Map Key: 1st Division, 9-1-13: portion of 32.

AREA:

Area/Space No. 611-103, containing an area of approximately 200 square feet, as shown and delineated on the attached map labeled Exhibit "A".

ITEM M-2

BLNR – ISSUANCE OF A REVOCABLE PERMIT FOR RAMP SPACE FOR CONTAINER STORAGE, HELICOPTER TRANSPORT SERVICES, LLC
PAGE 2

ZONING:

State Land Use District: Urban
City and County of Honolulu LUO: P-2 (To be rezoned in the future)

LAND TITLE STATUS:

Non-ceded - Section 5(a) lands of the Hawai'i Admission Act
DHHL 30% entitlement lands pursuant to Hawai'i Admission Act YES ___ NO X

CURRENT USE STATUS:

Land presently encumbered by Governor's Executive Order No. 3861, setting aside Kalaeloa Airport under the control and management of the Department of Transportation, Airports Division (DOTA), State of Hawai'i, for Airport Purposes.

CHARACTER OF USE:

Ramp space for storage of a container for equipment and supplies for a commercial heavy-lift helicopter operations company as part of the contract for the repair and expansion of HECO's electric grid system on Oahu.

COMMENCEMENT DATE:

To be determined by the Director of Transportation at a later date.

MONTHLY RENTAL:

\$208.33, as determined from the DOTA schedule of rates and charges established by appraisal of Airports property statewide.

SECURITY DEPOSIT:

Three (3) times the monthly rental in effect.

CHAPTER 343, HRS - ENVIRONMENTAL ASSESSMENT:

The subject land area is covered by the Final Environmental Assessment for the Kalaeloa Airfield Development Plan Improvements, State Project No. AO5011-02 dated June 2010. This Environmental Assessment was prepared by Wilson Okamoto Corp. for the State of Hawai'i, Department of Transportation, Airports Division, in part to evaluate the environmental effects of the recommended Kalaeloa Airfield Master Plan to meet existing and forecast general aviation demands.

BLNR – ISSUANCE OF A REVOCABLE PERMIT FOR RAMP SPACE FOR CONTAINER STORAGE, HELICOPTER TRANSPORT SERVICES, LLC
PAGE 3

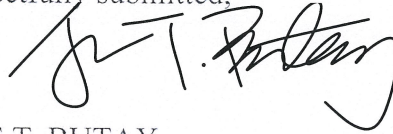
REMARKS:

The issuance of a revocable permit to Helicopter Transport Services, LLC, for ramp space for storage of a container at Kalaeloa Airport complies with Chapter 343, Exemption Class 1.D.10 as a continuing aeronautical use, and is in accordance with Section 171-55 HRS, relating to Permits.

RECOMMENDATION:

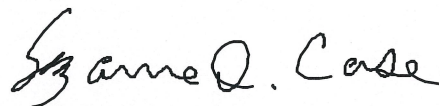
That the Board authorize the Department of Transportation to issue a month-to-month revocable permit to Helicopter Transport Services, LLC, subject to: (1) terms and conditions herein outlined, which are by reference incorporated herein; and (2) such additional terms and conditions as may be prescribed by the Director of Transportation to best serve the interests of the State.

Respectfully submitted,

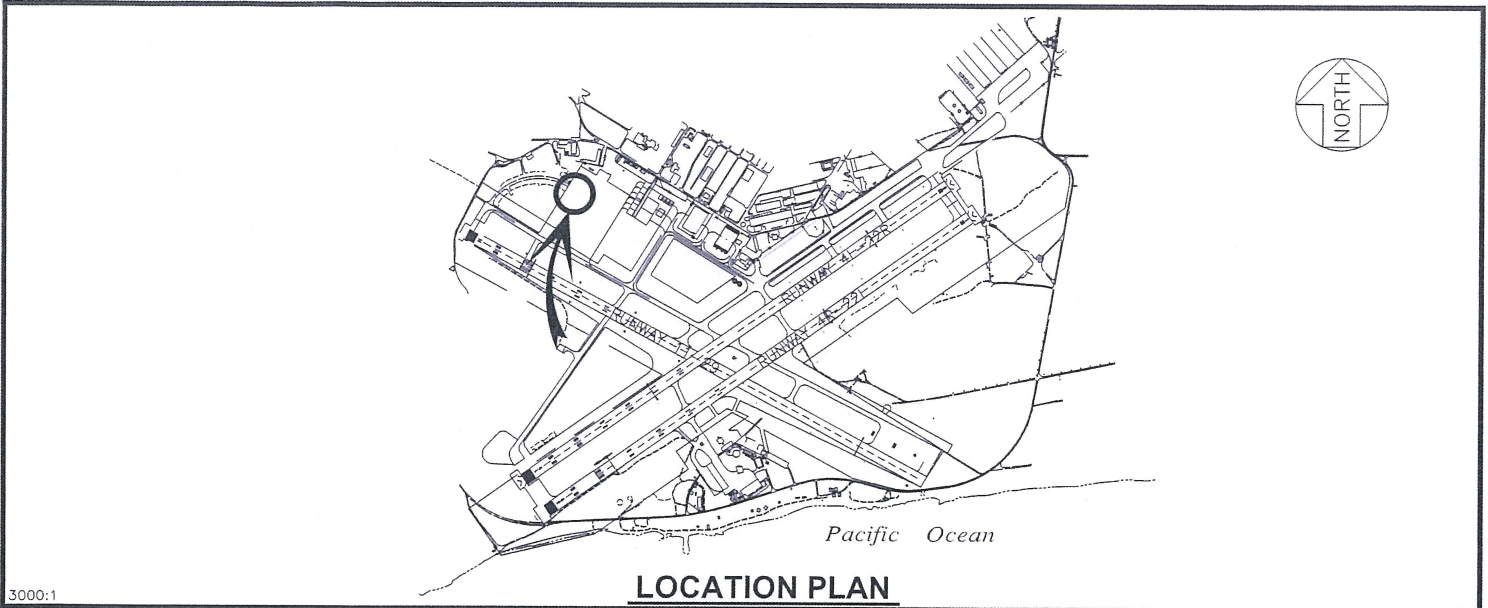


JADE T. BUTAY
Director of Transportation

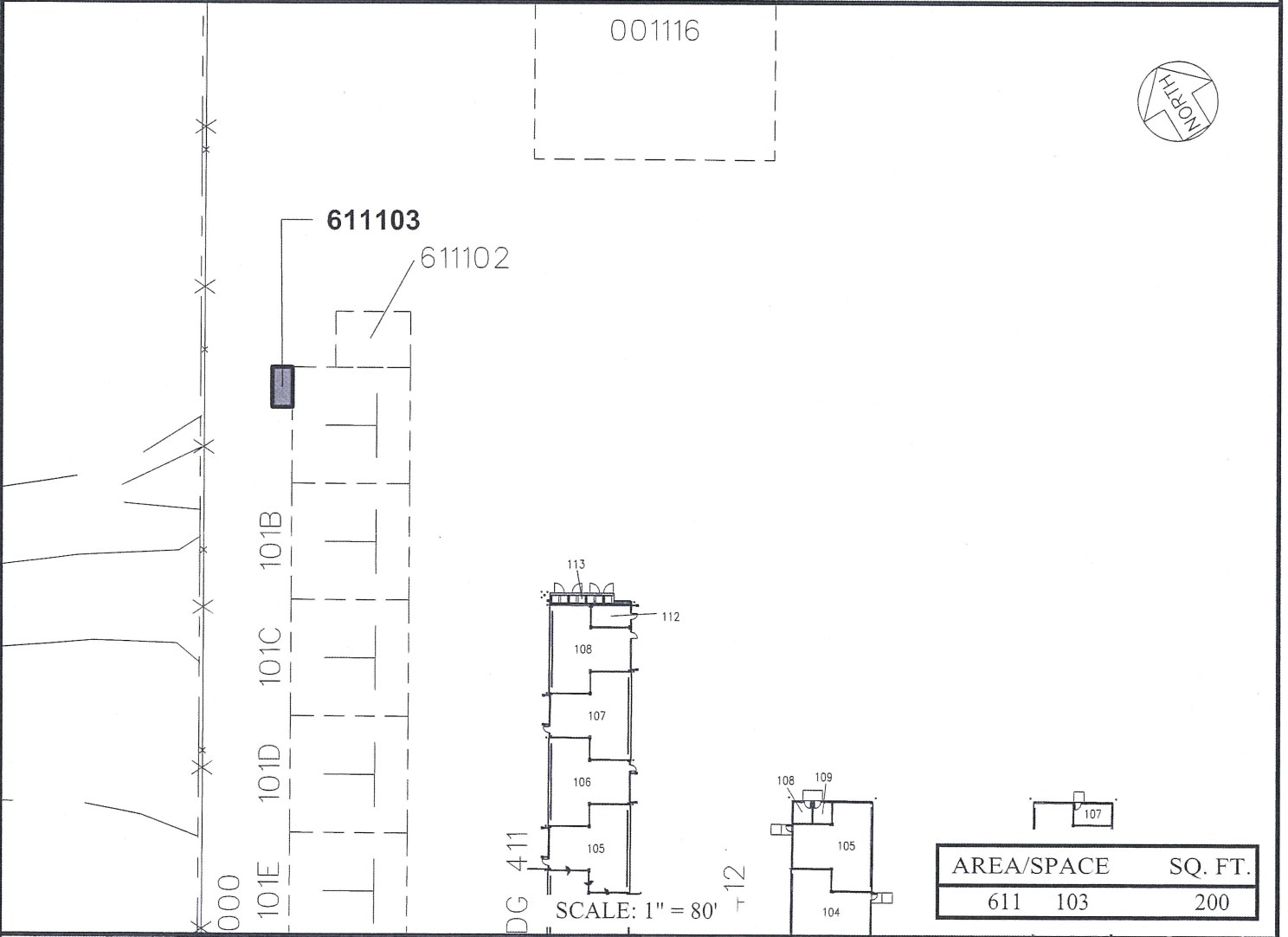
APPROVED FOR SUBMITTAL:



SUZANNE D. CASE
Chairperson and Member



3000:1



RP-8974 DATE : FEBRUARY 2020 EXHIBIT: **A**

DEPARTMENT OF TRANSPORTATION
STATE OF HAWAII
Airports Division

**HELICOPTER TRANSPORT
SERVICES, LLC**

**GENERAL AVIATION
PARKING FACILITIES**

611103

KALAELOA AIRPORT