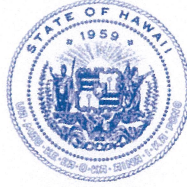


DAVID Y. IGE
GOVERNOR



STATE OF HAWAII
DEPARTMENT OF TRANSPORTATION
869 PUNCHBOWL STREET
HONOLULU, HAWAII 96813-5097

JADE T. BUTAY
DIRECTOR

Deputy Directors
LYNN A.S. ARAKI-REGAN
DEREK J. CHOW
ROSS M. HIGASHI
EDWIN H. SNIFFEN

IN REPLY REFER TO:

Board of Land and
Natural Resources
State of Hawai'i
Honolulu, Hawai'i

ISSUANCE OF A REVOCABLE PERMIT FOR AN
ENCLOSED PASSENGER SEATING AREA
BARBERS POINT AVIATION SERVICES, LLC
KALAELOA AIRPORT
TAX MAP KEY: (1) 9-1-13: PORTION OF 32

O'AHU

REQUEST:

Issuance of a Revocable Permit for an enclosed passenger seating area as part of its aircraft handling and ground services operations to Barbers Point Aviation Services, LLC, situated at Kalaeloa Airport, Kapolei, Hawai'i.

LEGAL REFERENCE:

Section 171-55, Hawai'i Revised Statutes (HRS).

APPLICANT:

Barbers Point Aviation Services, LLC, whose mailing address is 91-1259 Midway Road, Building #104, Suite 1, Kapolei, Hawai'i 96707.

LOCATION AND TAX MAP KEY:

A portion of Kalaeloa Airport, Kapolei, Island of O'ahu, State of Hawai'i, identified by Tax Map Key: 1st Division, 9-1-13: portion of 32.

AREA:

Building/Room No. 001-125, containing an area of approximately 1,160 square feet, as shown and delineated on the attached map labeled Exhibit "A".

ZONING:

State Land Use District: Urban
City and County of Honolulu LUO: P-2 (To be rezoned in the future)

ITEM M-2

BLNR – ISSUANCE OF A REVOCABLE PERMIT FOR AN ENCLOSED PASSENGER SEATING AREA, BARBERS POINT AVIATION SERVICES, LLC
PAGE 2

LAND TITLE STATUS:

Non-ceded - Section 5(a) lands of the Hawai'i Admission Act
DHHL 30% entitlement lands pursuant to Hawai'i Admission Act YES ___ NO X

CURRENT USE STATUS:

Land presently encumbered by Governor's Executive Order No. 3861, setting aside Kalaeloa Airport under the control and management of the Department of Transportation, Airports Division (DOTA), State of Hawai'i, for Airport Purposes.

CHARACTER OF USE:

Improved, paved land for an enclosed passenger seating area as part of its aircraft handling and ground services operations to Barbers Point Aviation Services, LLC.

COMMENCEMENT DATE:

To be determined by the Director of Transportation at a later date.

MONTHLY RENTAL:

\$311.27, as determined from the DOTA schedule of rates and charges established by appraisal of Airports property statewide.

SECURITY DEPOSIT:

Three (3) times the monthly rental in effect.

CHAPTER 343, HRS - ENVIRONMENTAL ASSESSMENT:

The subject land area is covered by the Final Environmental Assessment for the Kalaeloa Airfield Development Plan Improvements, State Project No. AO5011-02 dated June 2010. This Environmental Assessment was prepared by Wilson Okamoto Corp. for the State of Hawai'i, Department of Transportation, Airports Division, in part to evaluate the environmental effects of the recommended Kalaeloa Airfield Master Plan to meet existing and forecast general aviation demands.

REMARKS:

The issuance of a revocable permit to Barbers Point Aviation Services, LLC, for improved, paved land for an enclosed passenger seating area at Kalaeloa Airport complies with Chapter 343, Exemption Class 1.D.10 as a continuing aeronautical use, and is in accordance with Section 171-55 HRS, relating to Permits.

BLNR – ISSUANCE OF A REVOCABLE PERMIT FOR AN ENCLOSED PASSENGER SEATING AREA, BARBERS POINT AVIATION SERVICES, LLC
PAGE 3

RECOMMENDATION:

That the Board authorize the Department of Transportation to issue a month-to-month revocable permit to Barbers Point Aviation Services, LLC, subject to: (1) terms and conditions herein outlined, which are by reference incorporated herein; and (2) such additional terms and conditions as may be prescribed by the Director of Transportation to best serve the interests of the State.

Respectfully submitted,

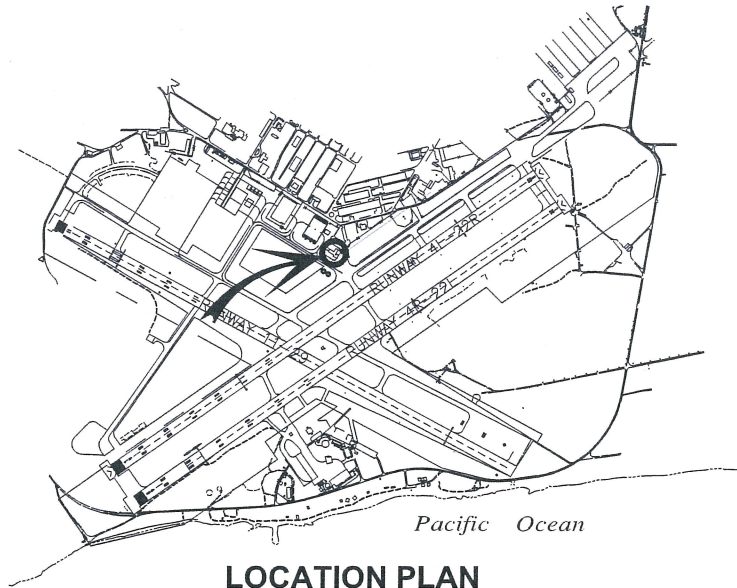


JADE T. BUTAY
Director of Transportation

APPROVED FOR SUBMITTAL:

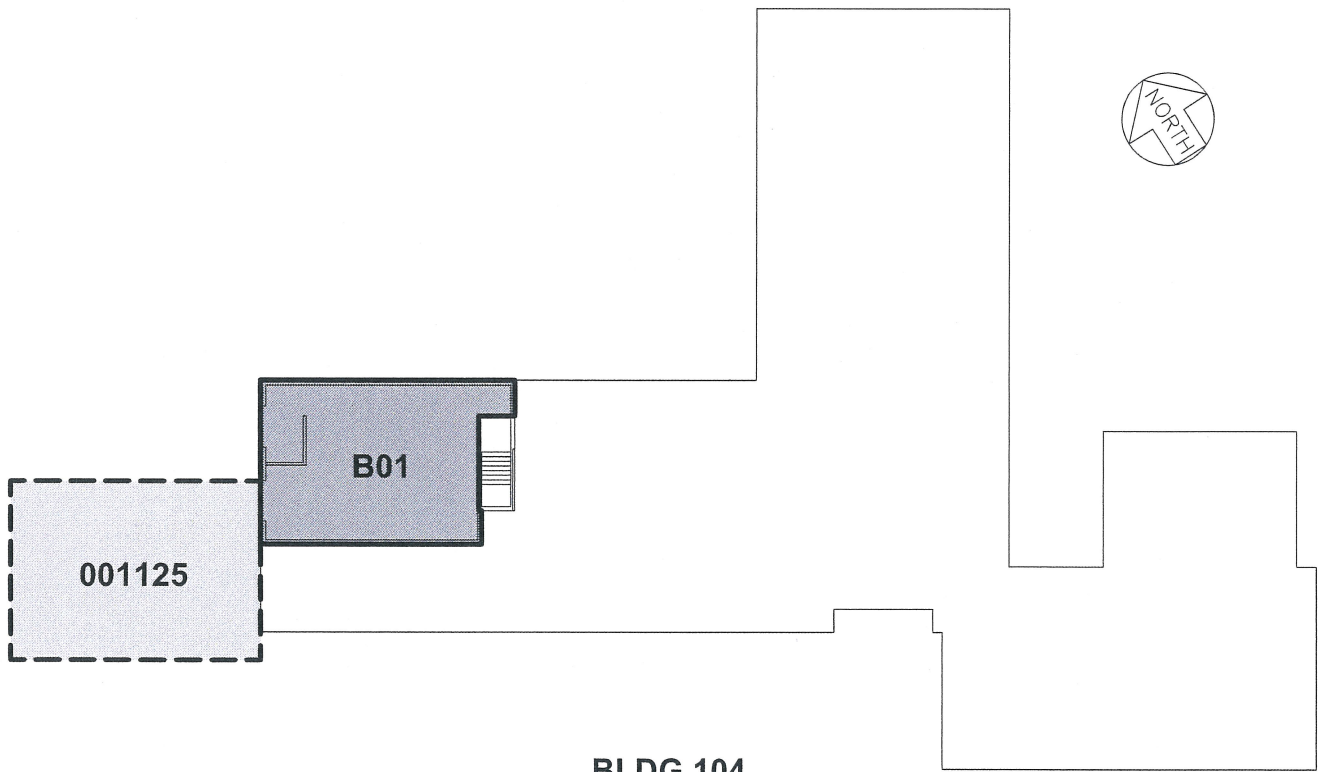


SUZANNE D. CASE
Chairperson and Member



3000:1

LOCATION PLAN



BLDG 104

AREA/SPACE	SQ. FT.
001 125	1,160

BLDG/ROOM	SQ. FT.
104 B01	967

SCALE: 1" = 30'

RP-8980

DATE : APRIL 2020

EXHIBIT: **A**



Airports Division

BARBERS POINT
AVIATION SERVICES, LLC.

BUILDING 104
OPERATIONS BUILDING

001125
104B01

KALAELOA AIRPORT