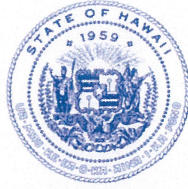


DAVID Y. IGE
GOVERNOR



STATE OF HAWAII
DEPARTMENT OF TRANSPORTATION
869 PUNCHBOWL STREET
HONOLULU, HAWAII 96813-5097

JADE T. BUTAY
DIRECTOR

Deputy Director
LYNN A.S. ARAKI-REGAN
DEREK J. CHOW
ROSS M. HIGASHI
EDWIN H. SNIFFIN

IN REPLY REFER TO:

Board of Land and
Natural Resources
State of Hawai'i
Honolulu, Hawai'i

ISSUANCE OF A REVOCABLE PERMIT FOR OFFICE SPACE FOR THE PURPOSE
OF PROVIDING 24-HOUR MEDICAL RESPONSE SERVICES
INTERNATIONAL LIFE SUPPORT, INC. DBA AMERICAN MEDICAL RESPONSE
DANIEL K. INOUE INTERNATIONAL AIRPORT
TAX MAP KEY: (1) 1-1-72: 69 (PORTION) O'AHU

APPLICANT:

International Life Support, Inc., dba American Medical Response (ILS), whose mailing
address is 99-840 Iwaiwa Street, Aiea, Hawai'i 96701.

LEGAL REFERENCE:

Section 171-55, Hawai'i Revised Statutes (HRS).

LOCATION:

90 Nakolo Place, Building No. 206, Ground Level at Daniel K. Inouye International
Airport, identified by Tax Map Key: 1st Division, 1-1-72: 69 (Portion).

AREA:

Building/Room No. 206-118, containing an area of approximately 601 square feet;
as shown and delineated on the attached map labeled Exhibit "A".

ZONING:

State Land Use District: Urban
City and County of Honolulu LUO: Industrial (I-2)

LAND TITLE STATUS:

Public Law 88-233 - lands of the Hawai'i Admission Act – Ceded
DHHL 30% entitlement lands pursuant to the Hawai'i State Constitution: YES ___ NO X

ITEM M-1

CURRENT USE STATUS:

Land presently encumbered by Governor’s Executive Order No. 3201, dated June 8, 1983, setting aside 3,152.177 acres designated as Daniel K. Inouye International Airport under the control and management of the State of Hawai‘i, Department of Transportation, Airports Division (DOTA) for Airport Purposes.

CHARACTER OF USE:

ILS will use the space as an office that provides 24-hour emergency medical response services at the Daniel K. Inouye International Airport.

COMMENCEMENT DATE:

Upon execution of the revocable permit.

MONTHLY RENTAL:

\$751.25 (\$300.50, as determined from the DOTA schedule of rates and charges established by appraisal of airports property statewide plus \$300.50 for utilities and \$150.25 for maintenance fees).

SECURITY DEPOSIT:

Three (3) times the monthly rental in effect.

DCCA VERIFICATION:

Place of business registration confirmed:	YES <u>X</u>	NO _____
Registered business name confirmed:	YES <u>X</u>	NO _____
Good standing confirmed:	YES <u>X</u>	NO _____

CHAPTER 343, HRS - ENVIRONMENTAL ASSESSMENT:

The subject land area is covered by the Environmental Assessment for the Honolulu International Airport Master Plan Update and Noise Compatibility Program, State Project No. AO1011-03 dated September 1989. This Environmental Assessment was prepared by KFC Airports, Inc. for the DOTA, in part to evaluate the environmental effects of the recommended Airport Development Plan to accommodate the forecast commercial aviation needs of the Island of O‘ahu.

BLNR – ISSUANCE OF A REVOCABLE PERMIT FOR OFFICE SPACE FOR THE
PURPOSE OF 24-HOUR EMERGENCY MEDICAL RESPONSE SERVICES, AMERICAN
MEDICAL RESPONSE, INC. DBA AMERICAN MEDICAL RESPONSE

Page 3

REMARKS:

In accordance with Section 171-55, HRS, relating to Permits, the Department of
Transportation (DOT) proposes to issue a month-to-month revocable permit to ILS for

office space that provides 24-hour emergency medical response services at the Daniel K.
Inouye International Airport. DOT has no objections to ILS's request.

RECOMMENDATION:

That the Board authorize the DOT to issue a month-to-month revocable permit to ILS,
subject to: (1) terms and conditions herein outlined, which are by reference incorporated
herein; and (2) such additional terms and conditions as may be prescribed by the Director
of Transportation to best serve the interests of the State.

Respectfully submitted,

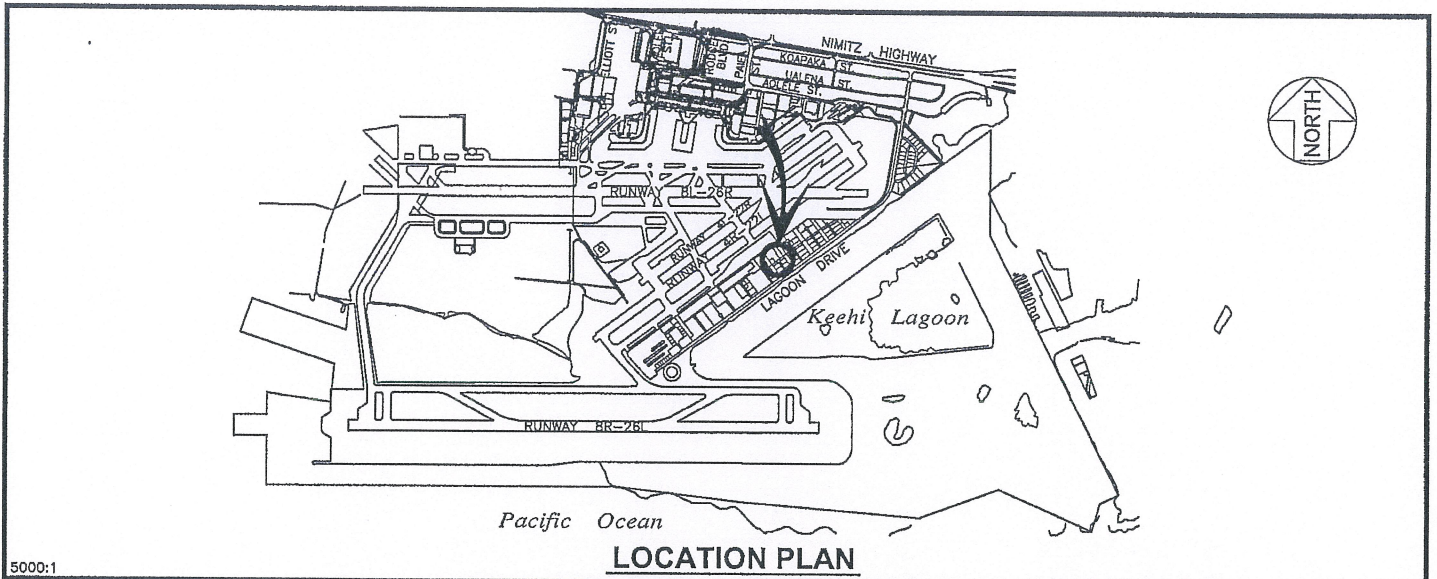


JADE T. BUTAY
Director of Transportation

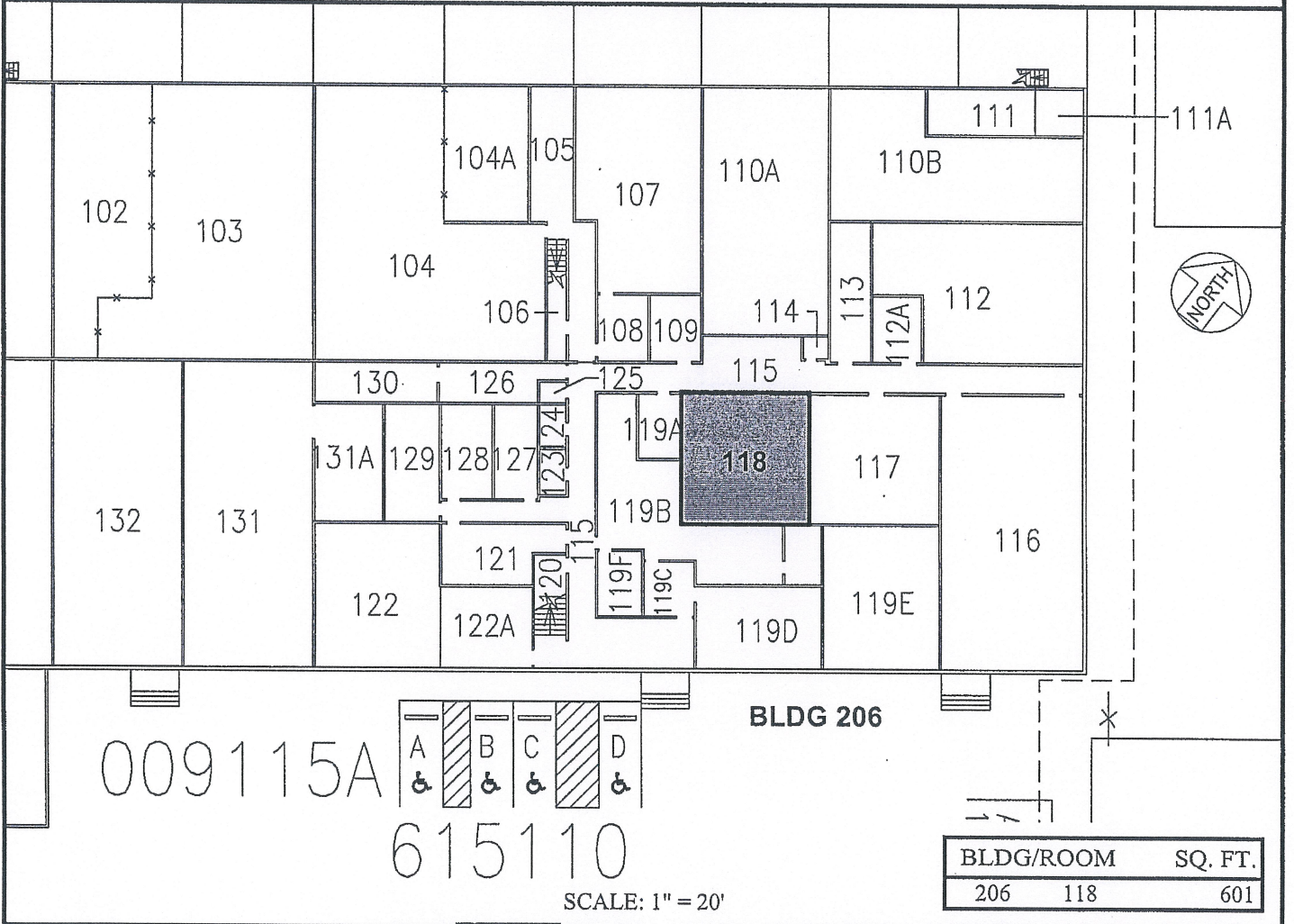
APPROVED FOR SUBMITTAL:



SUZANNE D. CASE
Chairperson and Member



5000:1



DATE : JUNE 2020

EXHIBIT: **A**

	INTERNATIONAL LIFE SUPPORT, INC. DBA AMERICAN MEDICAL RESPONSE	BUILDING 206 AIR SERVICE CORPORATION GROUND LEVEL	206118
			PLAT 36

DANIEL K. INOUE INTERNATIONAL AIRPORT

DRAWING2.DWG