

STATE OF HAWAII
DEPARTMENT OF TRANSPORTATION
869 PUNCHBOWL STREET
HONOLULU, HAWAII 96813-5097

JADE T. BUTAY
DIRECTOR

Deputy Directors
LYNN A.S. ARAKI-REGAN
DEREK J. CHOW
ROSS M. HIGASHI
EDWIN H. SNIFFEN

IN REPLY REFER TO:

Board of Land and
Natural Resources
State of Hawai'i
Honolulu, Hawai'i

ISSUANCE OF A REVOCABLE PERMIT FOR CARGO AREA RAMP
SPACE FOR EQUIPMENT STORAGE
TRANS EXECUTIVE AIRLINES OF HAWAII, INC.
ELLISON ONIZUKA KONA INTERNATIONAL AIRPORT AT KEĀHOLE
TAX MAP KEY: (3) 7-3-43: PORTION OF 40

HAWAI'I

LEGAL REFERENCE:

Section 171-55, Hawai'i Revised Statutes

APPLICANT:

Trans Executive Airlines of Hawaii, Inc. (TEA), whose business address is
P.O. Box 29230, Honolulu, Hawai'i 96820.

LOCATION AND TAX MAP KEY:

Portion of Ellison Onizuka Kona International Airport at Keāhole (KOA), Kailua-Kona,
Island of Hawai'i, identified by Tax Map Key: 3rd Division, 7-3-43: Portion of 40.

AREA:

Area/Space No. 630-149, containing an area of 1,200 square feet, as shown and delineated
on the attached Exhibit A.

ZONING:

State Land Use District:
County of Hawai'i:

Urban & Conservation
Industrial (MG-1a) and Open

ITEM M-3

BLNR – ISSUANCE OF A REVOCABLE PERMIT FOR CARGO AREA RAMP SPACE FOR EQUIPMENT STORAGE, TRANS EXECUTIVE AIRLINES OF HAWAII, INC.

Page 2

LAND TITLE STATUS:

Section 5(a) lands of the Hawai'i Admission Act: Ceded
DHHL 30% entitlement lands pursuant to Hawai'i Admission Act YES ___ NO X

CURRENT USE STATUS:

Airport and aeronautical purposes.

CHARACTER OF USE:

TEA will use the space as part of its cargo operations.

COMMENCEMENT DATE:

June 1, 2018.

MONTHLY RENTAL:

June 1, 2018 through January 31, 2020 \$155.00 (see REMARKS)
On and after February 1, 2020 . \$206.00 (as determined from the DOTA schedule of rates and charges established by appraisal of Airports property statewide).

SECURITY DEPOSIT:

\$465.00, or three times the monthly rental in effect

DCCA VERIFICATION:

Place of business registration confirmed: YES X NO _____
Registered business name confirmed: YES X NO _____
Good standing confirmed: YES X NO _____

CHAPTER 343, HRS - ENVIRONMENTAL ASSESSMENT:

The State of Hawaii, Department of Transportation, Airports Division (HDOTA), has determined that the subject land areas are covered by the Keahole Airport Master Plan Final Environmental Impact Statement (EIS), published by the Office of Environmental Quality Control (OEQC) in the November 8, 1988, issue of The Environmental Notice and accepted by the Governor on December 19, 1988.

BLNR – ISSUANCE OF A REVOCABLE PERMIT FOR CARGO AREA RAMP SPACE FOR EQUIPMENT STORAGE, TRANS EXECUTIVE AIRLINES OF HAWAII, INC.

Page 3

REMARKS:

TEA was allowed occupancy and use of the premises effective June 1, 2018, at which time a discount of 25% was being offered by the Department of Transportation Airports (DOT-A) for aeronautical tenants for ramp space. TEA was in breach of its Cargo Lease at Hilo International Airport, and the Permit was not allowed to progress until the breach was cured. TEA is now in good standing with DOTA, however the aeronautical discount has been discontinued and will be removed from billing effective February 1, 2020.

In accordance with Section 171-55 HRS, relating to Permits, the Department of Transportation proposes to issue a month-to-month revocable permit to TEA for its cargo operations at KOA.

RECOMMENDATION:

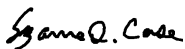
That the Board authorize the Department of Transportation to issue a month-to-month revocable permit to TEA, subject to: (1) terms and conditions herein outlined, which are by reference incorporated herein; and (2) such additional terms and conditions as may be prescribed by the Director of Transportation to best serve the interests of the State.

Respectfully submitted,

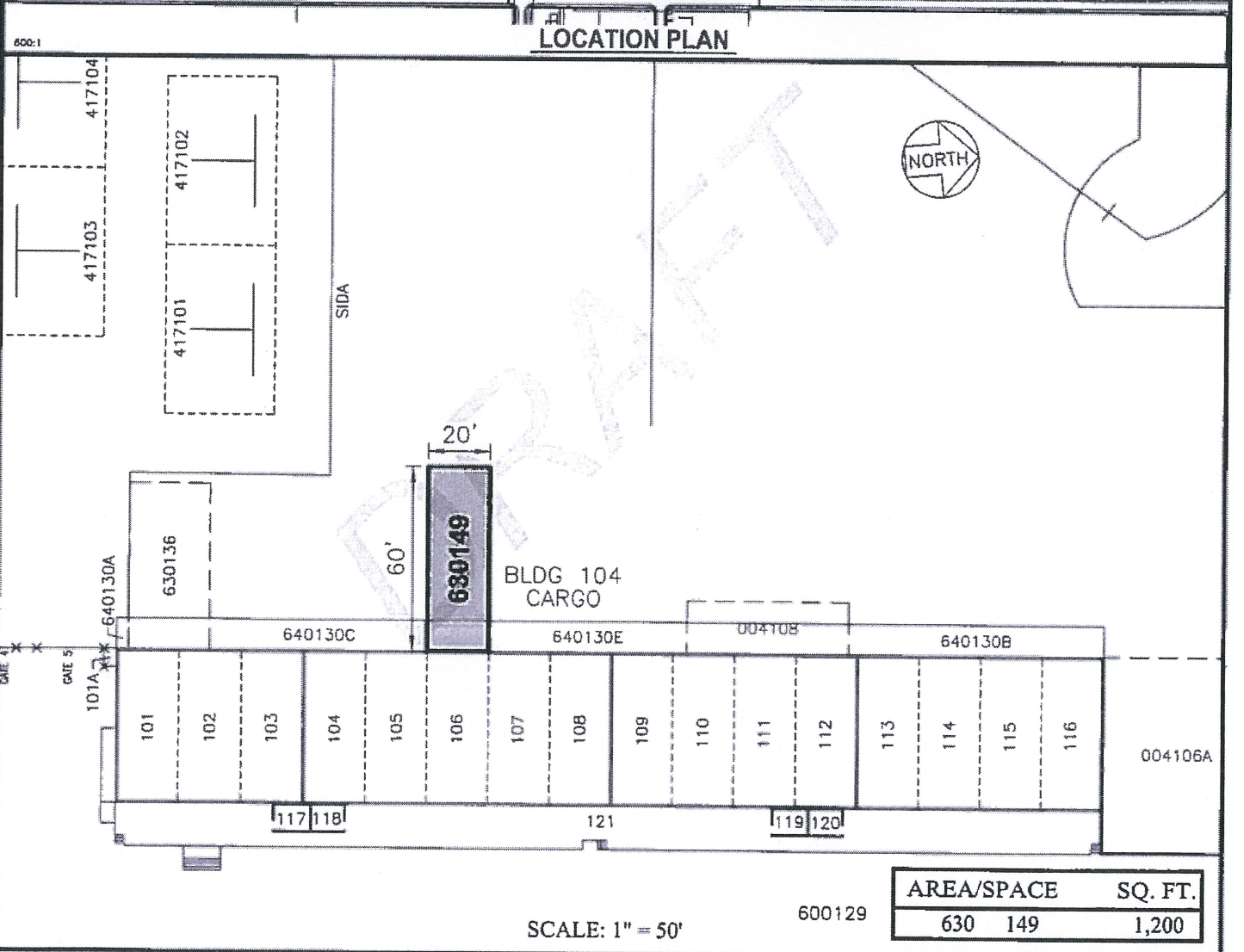
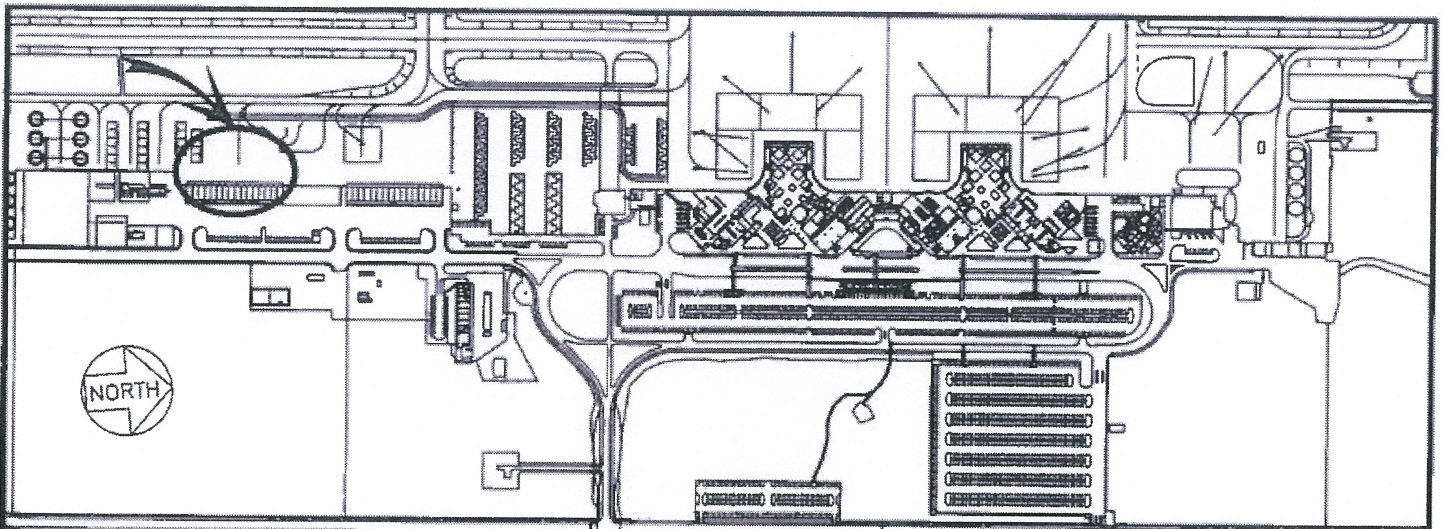


JADE T. BUTAY
Director of Transportation

APPROVED FOR SUBMITTAL:



SUZANNE D. CASE
Chairperson and Member



AREA/SPACE	SQ. FT.
630 149	1,200

SCALE: 1" = 50'

600129

DRAFT

DATE : AUGUST 2018

EXHIBIT: **A**



Airports Division

TRANS EXECUTIVE
AIRLINES OF HAWAII, INC.
dba TRANSAIR

PAVED AREA
GROUND LEVEL

630149
PLATS B1, C1, 39

ELLISON ONIZUKA KONA INTERNATIONAL AIRPORT AT KEAHOLE

N:\AIRPORTS\KOA_Kona\CAD\PM\koa_630149-01_draft.dwg