

DAVID Y. IGE
GOVERNOR



STATE OF HAWAII
DEPARTMENT OF TRANSPORTATION
869 PUNCHBOWL STREET
HONOLULU, HAWAII 96813-5097

JADE T. BUTAY
DIRECTOR

Deputy Directors
LYNN A. S. ARAKI-REGAN
DEREK J. CHOW
ROSS M. HIGASHI
EDWIN H. SNIFFEN

IN REPLY REFER TO:

Board of Land and
Natural Resources
State of Hawai'i
Honolulu, Hawai'i

ISSUANCE OF A REVOCABLE PERMIT FOR PARKING OF GROUND SERVICE
EQUIPMENT, VEHICLES, AND A MOBILE OFFICE TRAILER
U.S. AVIATION SERVICES CORP.
ELLISON ONIZUKA KONA INTERNATIONAL AIRPORT AT KEĀHOLE
TAX MAP KEY: (3) 7-3-43: PORTION OF 03

HAWAII

LEGAL REFERENCE:

Section 171-55, Hawai'i Revised Statutes.

APPLICANT:

U.S. Aviation Services Corp. (USAV), whose business address is 1550 S Indiana Ave.,
Suite 300, Chicago, Illinois 60605.

LOCATION AND TAX MAP KEY:

Portion of Ellison Onizuka Kona International Airport at Keāhole (KOA), Kailua-Kona,
Island of Hawai'i, identified by Tax Map Key: 3rd Division, 7-3-43: Portion of 03.

AREA:

Area/Space No. 630-168, containing an area of approximately 2,000 square feet, as shown
and delineated on the attached Exhibit A,
Area/Space No. 630-156, containing an area of approximately 320 square feet, as shown
and delineated on the attached Exhibit B,
Area/Space No. 610-154A, containing an area of approximately 513 square feet, and
Area/Space No. 610-154B, containing an area of approximately 513 square feet, as shown
and delineated on the attached Exhibit C.

ZONING:

State Land Use District:
County of Hawai'i:

Urban & Conservation
Industrial (MG-1a) and Open

ITEM M-7

BLNR – ISSUANCE OF A REVOCABLE PERMIT FOR PARKING OF GROUND SERVICE EQUIPMENT, VEHICLES, AND A MOBILE OFFICE TRAILER
U.S. AVIATION SERVICES CORP.
Page 2

LAND TITLE STATUS:

Section 5(a) lands of the Hawai'i Admission Act: Ceded
DHHL 30% entitlement lands pursuant to Hawai'i Admission Act YES ___ NO X

CURRENT USE STATUS:

Airport and aeronautical purposes.

CHARACTER OF USE:

USAV will use the spaces for equipment and vehicle parking and an office trailer as part of its ground handling operations.

COMMENCEMENT DATE:

Upon execution of the revocable permit.

MONTHLY RENTAL:

\$933.06 (as determined from the DOTA schedule of rates and charges established by appraisal of Airports property statewide, plus \$124.80 for electricity and \$80.00 for A/C).

SECURITY DEPOSIT:

\$2,799.18 or three times the monthly rental in effect.

HOLD OVER TENANCY

\$31.10

DCCA VERIFICATION:

Place of business registration confirmed:	YES <u>X</u>	NO _____
Registered business name confirmed:	YES <u>X</u>	NO _____
Good standing confirmed:	YES <u>X</u>	NO _____

CHAPTER 343, HRS - ENVIRONMENTAL ASSESSMENT:

The State of Hawai'i, Department of Transportation, Airports Division (DOTA), has determined that the subject land areas are covered by the Keāhole Airport Master Plan Final Environmental Impact Statement (EIS), published by the Office of Environmental Quality Control (OEQC) in the November 8, 1988, issue of The Environmental Notice

BLNR – ISSUANCE OF A REVOCABLE PERMIT FOR PARKING OF GROUND SERVICE EQUIPMENT, VEHICLES, AND A MOBILE OFFICE TRAILER
U.S. AVIATION SERVICES CORP.

Page 3

and accepted by the Governor on December 19, 1988. Accordingly, all relevant mitigation from the EA and best management practices will be implemented to address the minimum impacts of this action.

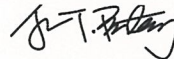
REMARKS:

In accordance with Section 171-55 HRS, relating to Permits, the Department of Transportation proposes to issue a month-to-month revocable permit to USAV for parking of ground service equipment, vehicles, and a mobile office trailer as part of its ground handling operations at KOA.

RECOMMENDATION:

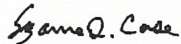
That the Board authorize the Department of Transportation to issue a month-to-month revocable permit to USAV, subject to: (1) terms and conditions herein outlined, which are by reference incorporated herein; and (2) such additional terms and conditions as may be prescribed by the Director of Transportation to best serve the interests of the State.

Respectfully submitted,

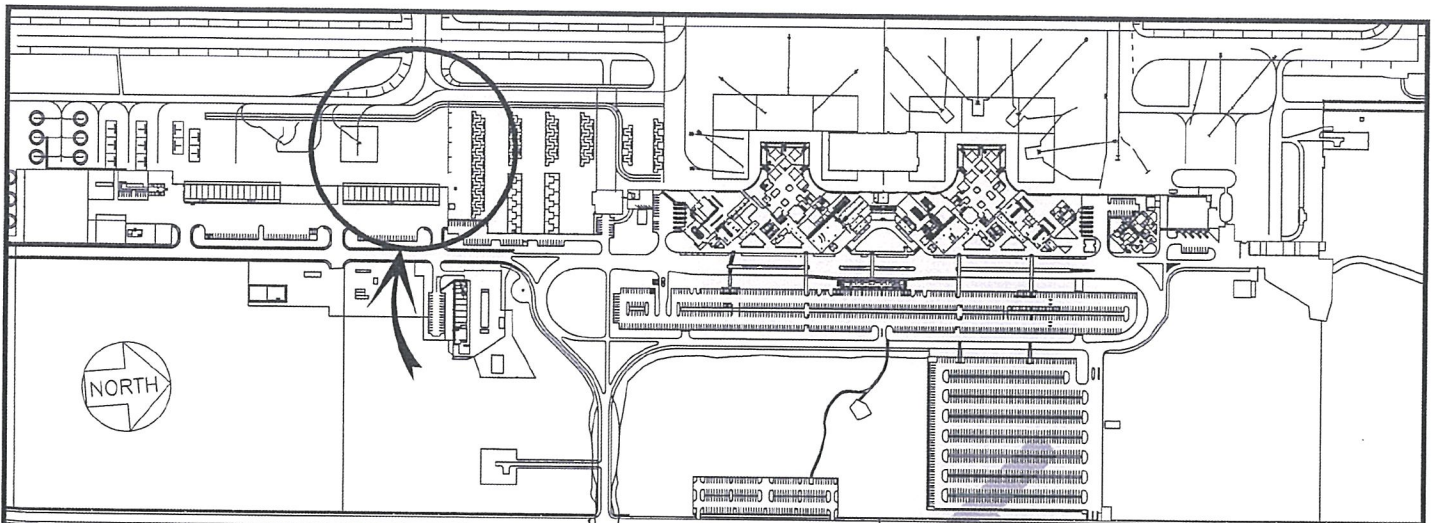


JADE T. BUTAY
Director of Transportation

APPROVED FOR SUBMITTAL:

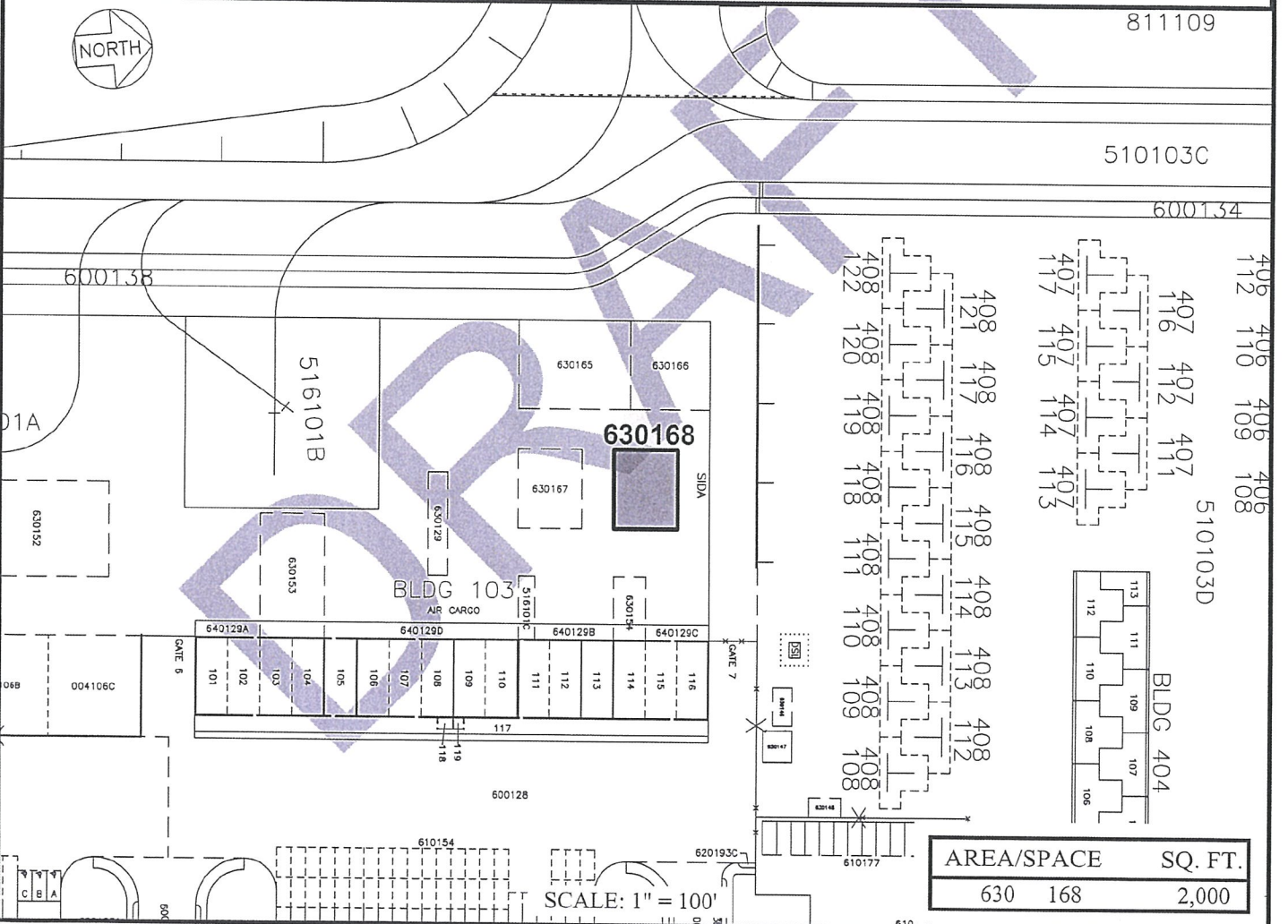


SUZANNE D. CASE
Chairperson and Member



600:1

LOCATION PLAN



SCALE: 1" = 100'

DRAFT

DATE : AUGUST 2020

EXHIBIT: **A**



U.S. AVIATION
SERVICES CORP.

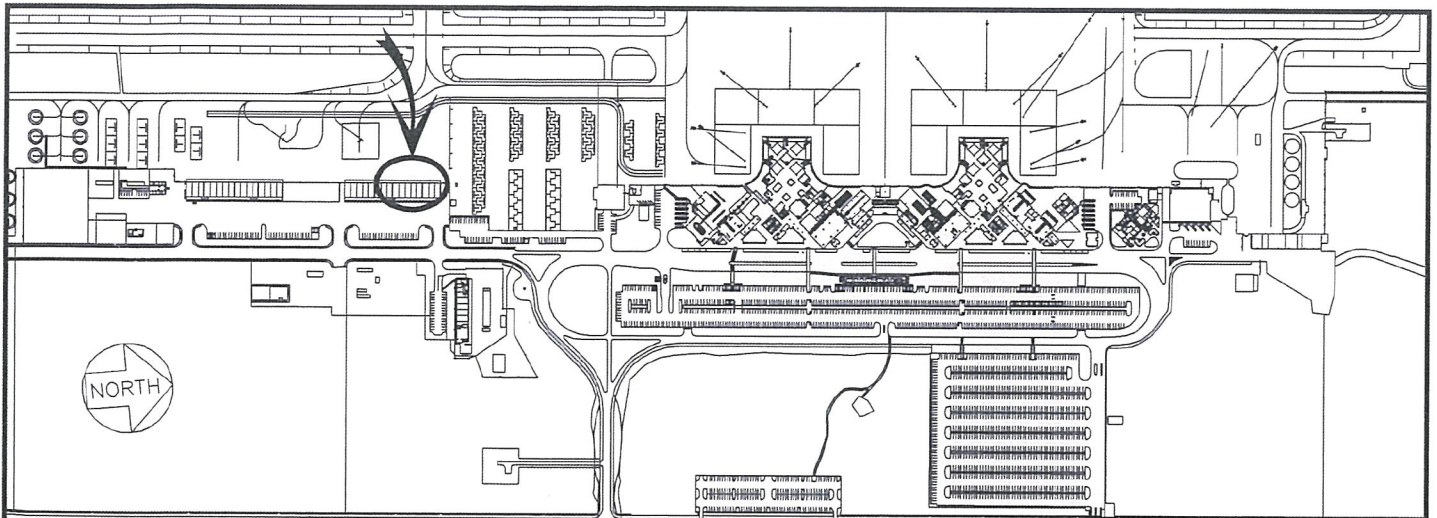
LOT

630168

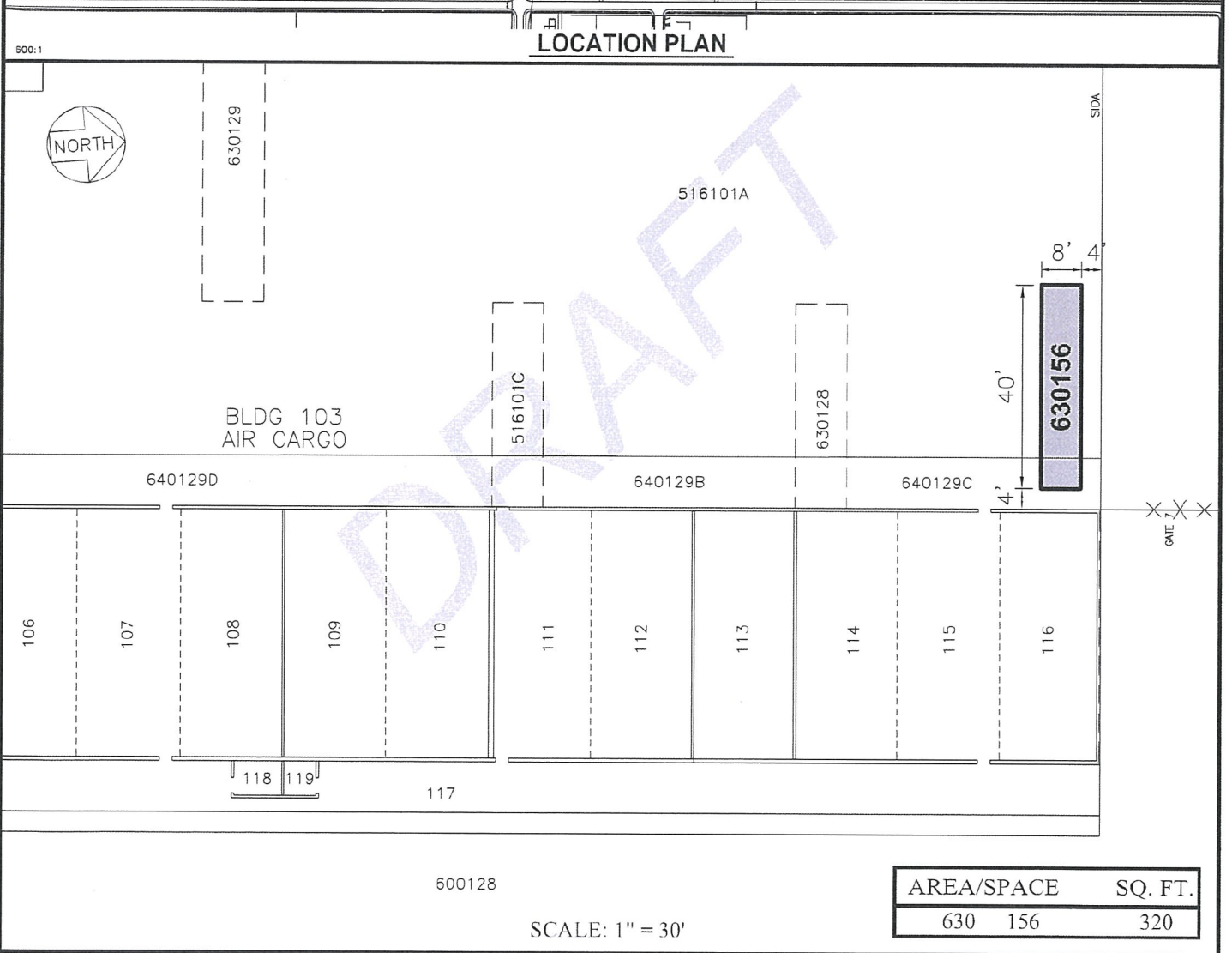
PLAT C1, 39

ELLISON ONIZUKA KONA INTERNATIONAL AIRPORT AT KEAHOLE

N:\AIRPORTS\KOA_Kona\CAD\PM\koa_630168-01_draft.dwg



LOCATION PLAN



AREA/SPACE	SQ. FT.
630 156	320

SCALE: 1" = 30'

DRAFT

DATE : FEBRUARY 2019

EXHIBIT: **B**



U. S. AVIATION
SERVICES CORP.

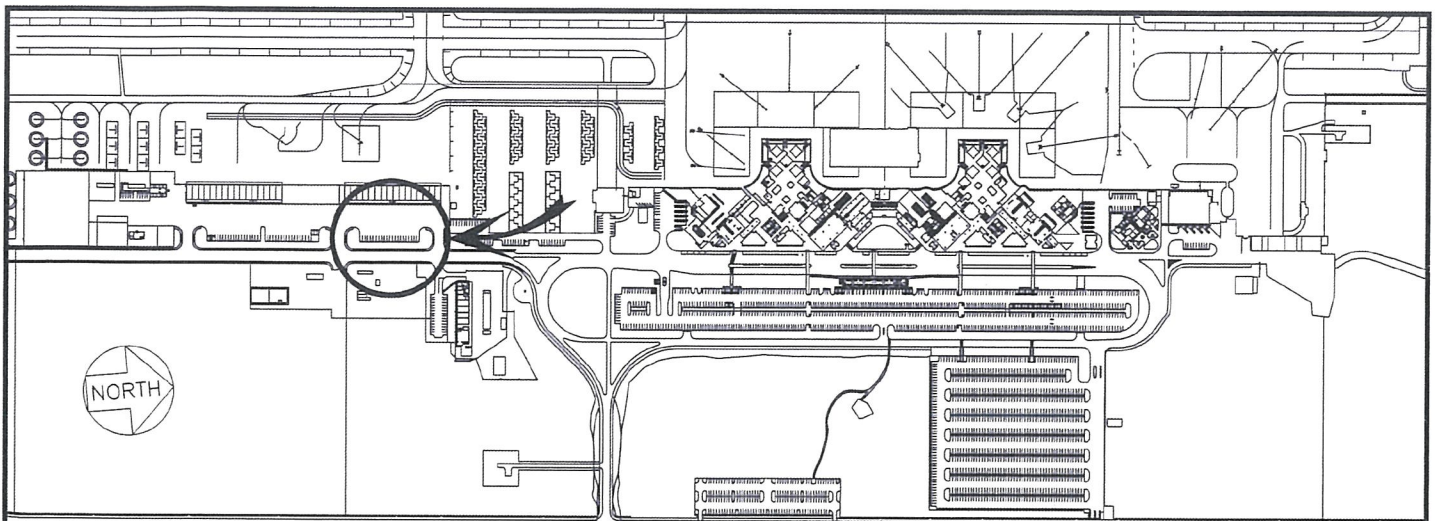
PAVED AREA

630156

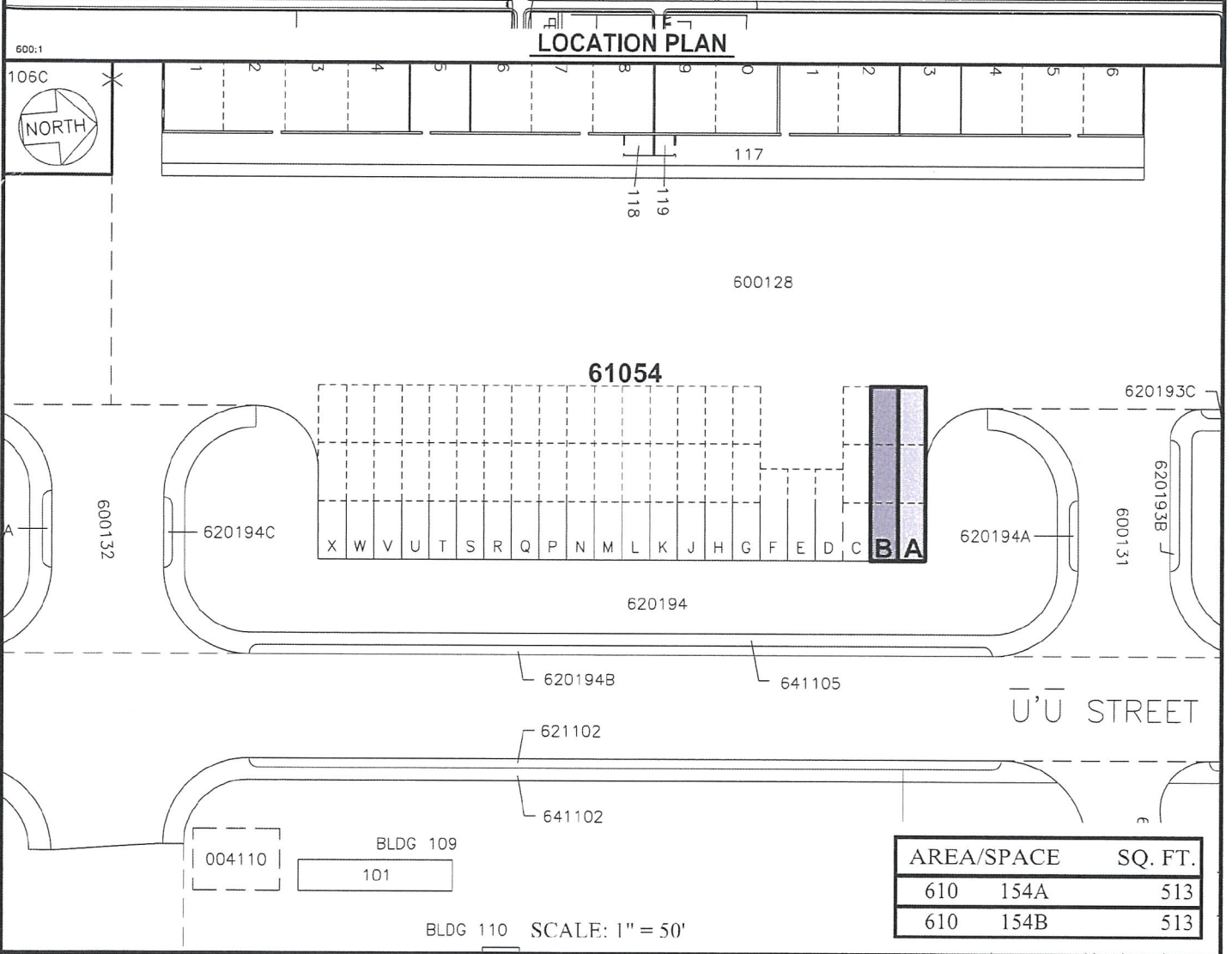
PLATS C1, 39

ELLISON ONIZUKA KONA INTERNATIONAL AIRPORT AT KEAHOLE

N:\AIRPORTS\KOA_Konc\CAD\PM\koo_630156-01_draft.dwg



LOCATION PLAN



AREA/SPACE	SQ. FT.
610 154A	513
610 154B	513

SCALE: 1" = 50'

DATE : DECEMBER 2019

EXHIBIT: **C**



Airports Division

U.S. AVIATION SERVICES CORP.

PARKING LOT

610154A
610154B

PLATS C1,39,59

ELLISON ONIZUKA KONA INTERNATIONAL AIRPORT AT KEAHOLE

N:\AIRPORTS\KOA_Kona\CAD\PM\kod_610154A-01.dwg