

DAVID Y. IGE  
GOVERNOR



STATE OF HAWAII  
DEPARTMENT OF TRANSPORTATION  
869 PUNCHBOWL STREET  
HONOLULU, HAWAII 96813-5097

JADE T. BUTAY  
DIRECTOR

Deputy Directors  
LYNN A. S. ARAKI-REGAN  
DEREK J. CHOW  
ROSS M. HIGASHI  
EDWIN H. SNIFFEN

IN REPLY REFER TO:

Board of Land and  
Natural Resources  
State of Hawai'i  
Honolulu, Hawai'i

ISSUANCE OF A REVOCABLE PERMIT FOR TWO AIRCRAFT PARKING  
GEORGE'S AVIATION SERVICES, INC.

DANIEL K. INOUE INTERNATIONAL AIRPORT

O'AHU

TAX MAP KEY: (1) 1-1-76: PORTION OF 23

REQUEST:

Issuance of a Revocable Permit for Aircraft Parking (Parking Permit) to George's Aviation Services, Inc., situated at Daniel K. Inouye International Airport.

LEGAL REFERENCE:

Section 171-55, Hawai'i Revised Statutes.

APPLICANT:

George's Aviation Services, Inc., whose mailing address is 18 Lagoon Drive, Honolulu, Hawai'i 96819.

LOCATION:

A portion of Daniel K. Inouye International Airport, identified as South Ramp, identified by Tax Map Key: 1<sup>st</sup> Division, 1-1-76: portion of 23.

、 AREA:

Area/Space No. 423-186B, containing an area of approximately 2,340 square feet; and Area/Space No. 423-186D, containing an area of approximately 2,340 square feet, as shown and delineated on the attached map labeled Exhibit A.

**ITEM M-1**

BLNR – ISSUANCE OF A REVOCABLE PERMIT FOR TWO AIRCRAFT PARKING  
GEORGE’S AVIATION SERVICES, INC.  
PAGE 2

ZONING:

State Land Use District: Urban  
City and County of Honolulu LUO: Industrial (I-2)

LAND TITLE STATUS:

Non-ceded - Section 5(a) lands of the Hawai‘i Admission Act  
DHHL 30% entitlement lands pursuant to Hawai‘i Admission Act YES \_\_\_\_ NO X

CURRENT USE STATUS:

Land presently encumbered by Governor’s Executive Order No. 3201, dated June 8, 1983, setting aside 3,152.177 acres designated as Daniel K. Inouye International Airport under the control and management of the State of Hawai‘i, Department of Transportation, Airports Division (DOTA) for Airport Purposes.

CHARACTER OF USE:

Two Aircraft Tie-Downs (1979 Cessna 172, Tail No. N-66540 and 1979 Cessna 172, Tail No. N-6734ZC).

COMMENCEMENT DATE:

To be determined by the Director of Transportation at a later date.

MONTHLY RENTAL:

\$352.00 (as determined from the DOTA schedule of rates and charges established by appraisal of Airports property statewide).

SECURITY DEPOSIT:

Three (3) times the monthly rental in effect.

CHAPTER 343, HRS - ENVIRONMENTAL ASSESSMENT:

The environmental impacts of the proposed action to the subject land area is covered by the Honolulu International Airport Master Plan Update and Noise Compatibility Program Environmental Assessment (EA), State Project No. AO1011-03. The EA is a joint State and Federal document, dated September 1989 and published in the October 23, 1989, issue of the OEQC Bulletin. Accordingly, relevant mitigation from the EA and DOTA environmental best management practice will address minimal impacts from this action.

BLNR – ISSUANCE OF A REVOCABLE PERMIT FOR TWO AIRCRAFT PARKING  
GEORGE’S AVIATION SERVICES, INC.  
PAGE 3

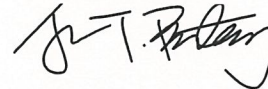
REMARKS:

The issuance of a Parking Permit to George’s Aviation Services, Inc. for two aircraft parking at Daniel K. Inouye International Airport complies with Chapter 343, Exemption Class 1.D.10 as a continuing aeronautical use, and is in accordance with Section 171-55 HRS, relating to Permits.

RECOMMENDATION:

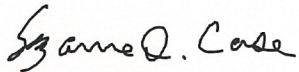
That the Board authorize the Department of Transportation to issue a month-to-month Parking Permit to George’s Aviation Services, Inc., subject to: (1) terms and conditions herein outlined, which are by reference incorporated herein; and (2) such additional terms and conditions as may be prescribed by the Director of Transportation to best serve the interests of the State.

Respectfully submitted,



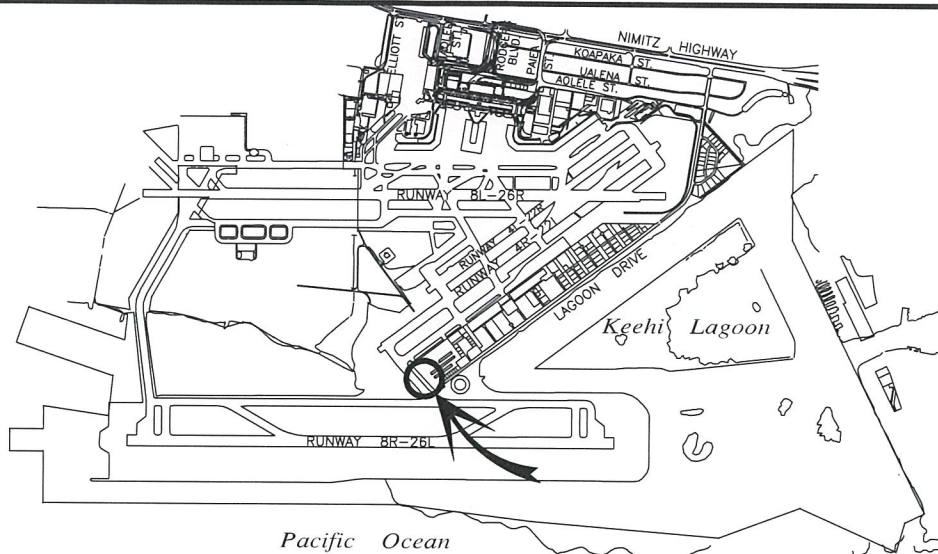
JADE T. BUTAY  
Director of Transportation

APPROVED FOR SUBMITTAL:

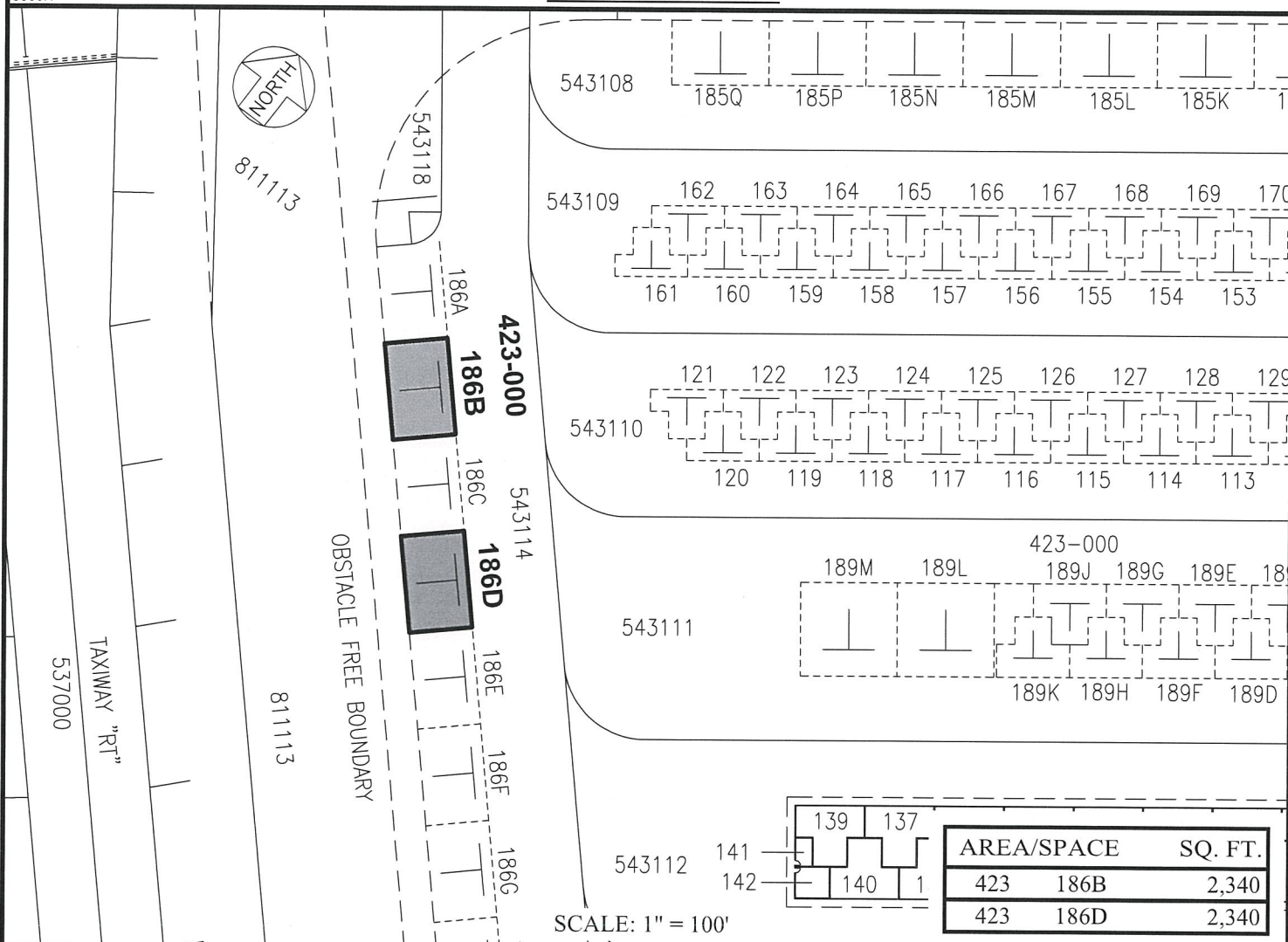


SUZANNE D. CASE  
Chairperson and Member





5000:1



PP-20-0002

DATE : MARCH 2020

EXHIBIT: **A**



Airports Division

GEORGE'S AVIATION  
SERVICES, INC.

TIE - DOWN  
GENERAL AVIATION  
SOUTH RAMP

423186B  
423186D

PLAT 45

Adobe Sign Transaction Number: CB1CHRCABAAAd7DZDUrGXch5W2\_Uhin80-qO9HJOG990

N:\AIRPORTS\HNL\_HONOLULU\CAD\PM\HNL\_423186B-01.DWG

**DANIEL K. INOUE INTERNATIONAL AIRPORT**