

DAVID Y. IGE
GOVERNOR



STATE OF HAWAII
DEPARTMENT OF TRANSPORTATION
869 PUNCHBOWL STREET
HONOLULU, HAWAII 96813-5097

JADE T. BUTAY
DIRECTOR

Deputy Directors
LYNN A. S. ARAKI-REGAN
DEREK J. CHOW
ROSS M. HIGASHI
EDWIN H. SNIFFEN

IN REPLY REFER TO:

Board of Land and
Natural Resources
State of Hawai'i
Honolulu, Hawai'i

ISSUANCE OF A REVOCABLE PERMIT FOR A GENERAL AVIATION HANGAR
FOR HELICOPTER EMERGENCY MEDICAL SERVICES AIR AMBULANCE
OPERATIONS
REACH AIR MEDICAL SERVICES, LLC
KAHULUI AIRPORT
TAX MAP KEY: (2) 3-8-01: PORTION OF 215

MAUI

LEGAL REFERENCE:

Section 171-55, Hawai'i Revised Statutes.

APPLICANT:

REACH Air Medical Services, LLC (REACH), whose business address is 230 Hana Highway, #12B, Kahului, Hawai'i 96732.

LOCATION AND TAX MAP KEY:

Portion of Kahului Airport (OGG), Kahului, Island of Maui, identified by Tax Map Key: 2nd Division, 3-8-01: Portion of 215.

AREAS:

Building/Room No. 234-100, containing an area of approximately 5,950 square feet; and Area/Space No. 517-104, containing an area of approximately 4,050 square feet as shown and delineated on the attached Exhibit A.

ZONING:

State Land Use District: Urban
County of Maui: Airport

ITEM M-6

BLNR – ISSUANCE OF A REVOCABLE PERMIT FOR A GENERAL AVIATION HANGAR FOR HELICOPTER EMERGENCY MEDICAL SERVICES AIR AMBULANCE OPERATIONS, REACH AIR MEDICAL SERVICES, LLC

Page 2

LAND TITLE STATUS:

Section 5(a) lands of the Hawai'i Admission Act: Non-Ceded
DHHL 30% entitlement lands pursuant to Hawai'i Admission Act YES ___ NO X

CURRENT USE STATUS:

Airport and aeronautical purposes.

CHARACTER OF USE:

Helicopter emergency medical services air ambulance operation.

COMMENCEMENT DATE:

Upon complete execution of the revocable permit.

MONTHLY RENTAL:

\$10,146.25 (\$9,253.75 as determined from the DOTA schedule of rates and charges established by appraisal of Airports property statewide plus \$892.50 for maintenance).

SECURITY DEPOSIT:

\$30,438.75, or three times the monthly rental in effect.

HOLD OVER:

\$338.21

DCCA VERIFICATION:

Place of business registration confirmed:	YES <u>X</u>	NO _____
Registered business name confirmed:	YES <u>X</u>	NO _____
Good standing confirmed:	YES <u>X</u>	NO _____

CHAPTER 343, HRS - ENVIRONMENTAL ASSESSMENT:

The State of Hawai'i, Department of Transportation, Airports Division, has determined that the environmental impacts for the subject land use is covered by the Kahului Airport Improvements Final Environmental Impact Statement (EIS), published by the Office of Environmental Quality Control (OEQC) in the October 23, 1997, issue of The Environmental Notice. The EIS was accepted by the Governor on February 18, 1998.

BLNR – ISSUANCE OF A REVOCABLE PERMIT FOR A GENERAL AVIATION HANGAR
FOR HELICOPTER EMERGENCY MEDICAL SERVICES AIR AMBULANCE
OPERATIONS, REACH AIR MEDICAL SERVICES, LLC

Page 3

Accordingly, all relevant mitigation from the EIS and best management practices will be implemented to address the minimum impacts of this action.

REMARKS:

In accordance with Section 171-55 HRS, relating to Permits, the Department of Transportation proposes to issue a month-to-month revocable permit to REACH for the use and operation of a general aviation hangar for its helicopter emergency medical services air ambulance operations at OGG.

RECOMMENDATION:

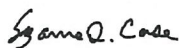
That the Board authorize the Department of Transportation to issue a month-to-month revocable permit to REACH, subject to: (1) terms and conditions herein outlined, which are by reference incorporated herein; and (2) such additional terms and conditions as may be prescribed by the Director of Transportation to best serve the interests of the State.

Respectfully submitted,

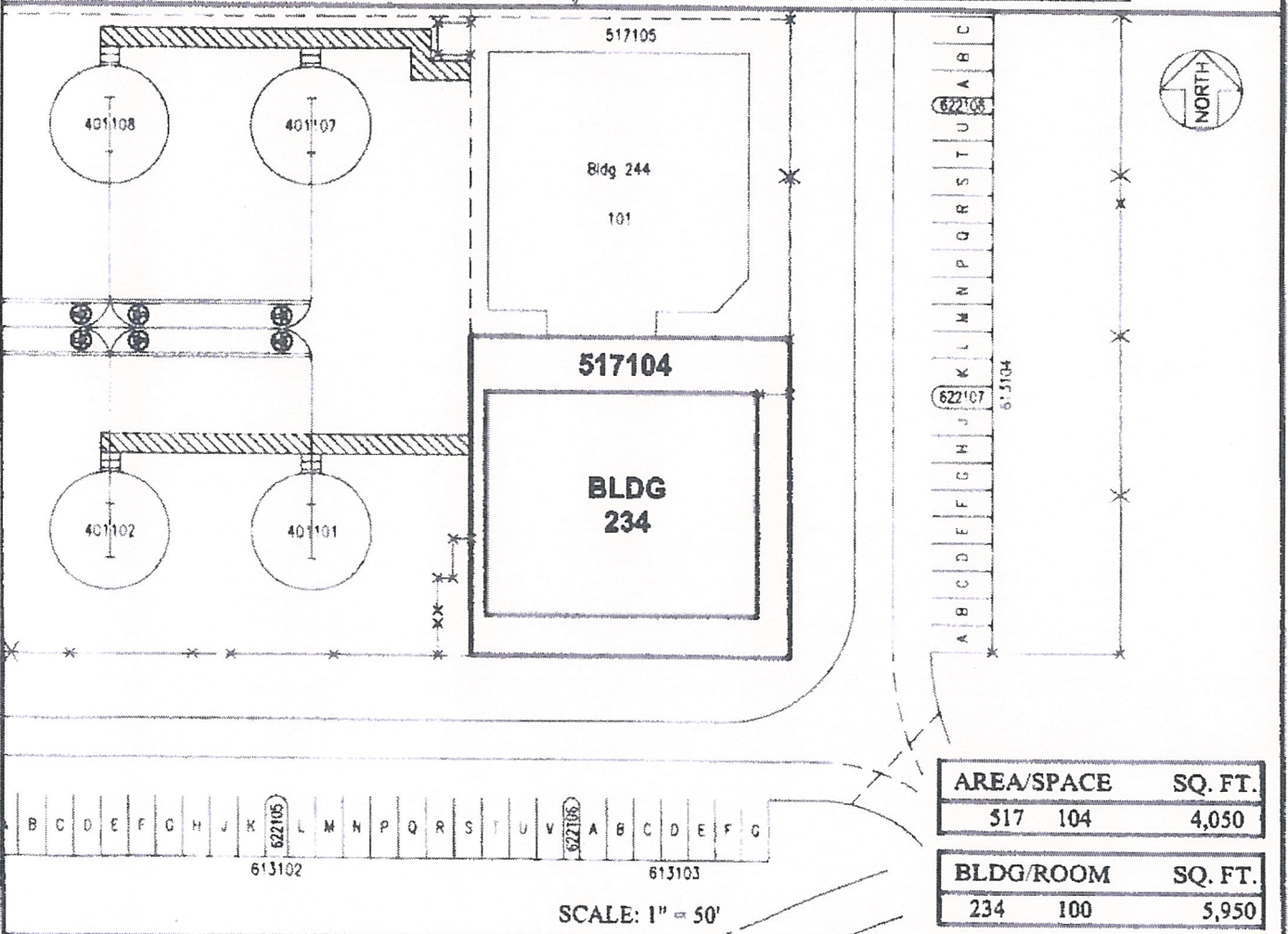
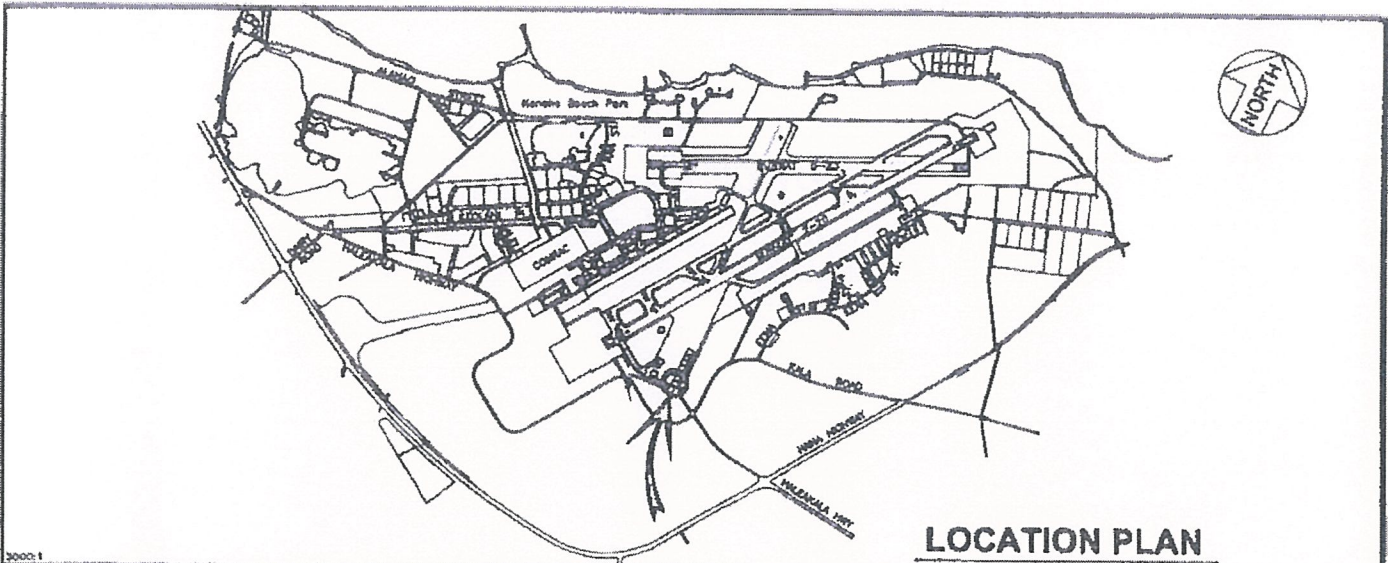


JADE T. BUTAY
Director of Transportation


APPROVED FOR SUBMITTAL:



SUZANNE D. CASE
Chairperson and Member



AREA/SPACE	SQ. FT.
517 104	4,050
BLDG/ROOM	SQ. FT.
234 100	5,950

DATE : JULY 2020		EXHIBIT: A	
 Airports Division	REACH AIR MEDICAL SERVICES, LLC	BUILDING 234 HELIPAD GROUND LEVEL	234100 517104
			PLAT 46

KAHULUI AIRPORT

H:\AIRPORTS\CGG_Kahului\CAD\PM\egg_234100-01.dwg