

DAVID Y. IGE
GOVERNOR



STATE OF HAWAII
DEPARTMENT OF TRANSPORTATION
869 PUNCHBOWL STREET
HONOLULU, HAWAII 96813-5097

JADE T. BUTAY
DIRECTOR

Deputy Directors
LYNN A. S. ARAKI-REGAN
DEREK J. CHOW
ROSS M. HIGASHI
EDWIN H. SNIFFEN

IN REPLY REFER TO:

Board of Land and
Natural Resources
State of Hawai'i
Honolulu, Hawai'i

ISSUANCE OF A REVOCABLE PERMIT FOR AIRCRAFT PARKING
KUPAU INC. DBA KUPAU TOURS INC.
ELLISON ONIZUKA KONA INTERNATIONAL AIRPORT AT KEĀHOLE
TAX MAP KEY: (3) 7-3-43:003 (PORTION)

HAWAII

REQUEST:

Issuance of a Revocable Permit for Aircraft Parking (Parking Permit) to Kupau Inc. dba Kupau Tours Inc., situated at Ellison Onizuka Kona International Airport at Keāhole

LEGAL REFERENCE:

Section 171-55, Hawai'i Revised Statutes (HRS).

APPLICANT:

Kupau Inc. dba Kupau Tours Inc. (Kupau), whose address is 75-5919 Ali'i Drive, P-1, Kailua-Kona, Hawai'i 96740.

LOCATION AND TAX MAP KEY:

Portion of Ellison Onizuka Kona International Airport at Keāhole (KOA), Kailua-Kona, Island of Hawai'i, identified by Tax Map Key: 3rd Division, 7-3-43:003 (Portion).

AREA:

Area/Space No. 423-111, containing an area of approximately 1,482 square feet, as shown and delineated on the attached Exhibit A.

ITEM M-1

BLNR – ISSUANCE OF A REVOCABLE PERMIT FOR AIRCRAFT PARKING
KUPAU INC. DBA KUPAU TOURS INC.

Page 2

ZONING:

State Land Use District: Urban & Conservation
County of Hawai'i: Industrial (MG-1a) and Open

LAND TITLE STATUS:

Section 5(a) lands of the Hawai'i Admission Act: Ceded
DHHL 30% entitlement lands pursuant to Hawai'i Admission Act YES ___ NO X

CURRENT USE STATUS:

Airport and aeronautical purposes.

CHARACTER OF USE:

Aircraft tie-down (1967 Cessna 401, N3264Q).

COMMENCEMENT DATE:

Upon execution of the parking permit.

MONTHLY RENTAL:

\$126.00 (as determined from the DOTA schedule of rates and charges established by appraisal of Airports property statewide).

SECURITY DEPOSIT:

\$378.00, or three times the monthly rental in effect.

DCCA VERIFICATION:

Place of business registration confirmed:	YES <u>X</u>	NO ___
Registered business name confirmed:	YES <u>X</u>	NO ___
Good standing confirmed:	YES <u>X</u>	NO ___

CHAPTER 343, HRS - ENVIRONMENTAL ASSESSMENT:

The State of Hawai'i, Department of Transportation, Airports Division (HDOT-A), has determined the subject land areas are covered by the Final Environmental Assessment (EA)/Finding of No Significant Impact (FONSI), Airfield, Terminal, and Facility Improvements for the Kona International Airport at Keāhole, published by the Office of Environmental Quality Control (OEQC) in the March 23, 2013, issue of The

BLNR – ISSUANCE OF A REVOCABLE PERMIT FOR AIRCRAFT PARKING
KUPAU INC. DBA KUPAU TOURS INC.

Page 3

Environmental Notice. Accordingly, all relevant mitigation from the EA and best management practices will be implemented to address the minimum impacts of this action.

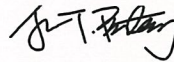
REMARKS:

In accordance with Section 171-55, HRS, relating to Permits, the Department of Transportation proposes to issue a month-to-month Parking Permit to Kupau for aircraft parking at KOA.

RECOMMENDATION:

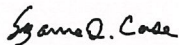
That the Board authorize the Department of Transportation to issue a month-to-month Parking Permit to Kupau, subject to: (1) terms and conditions herein outlined, which are by reference incorporated herein; and (2) such additional terms and conditions as may be prescribed by the Director of Transportation to best serve the interests of the State.

Respectfully submitted,

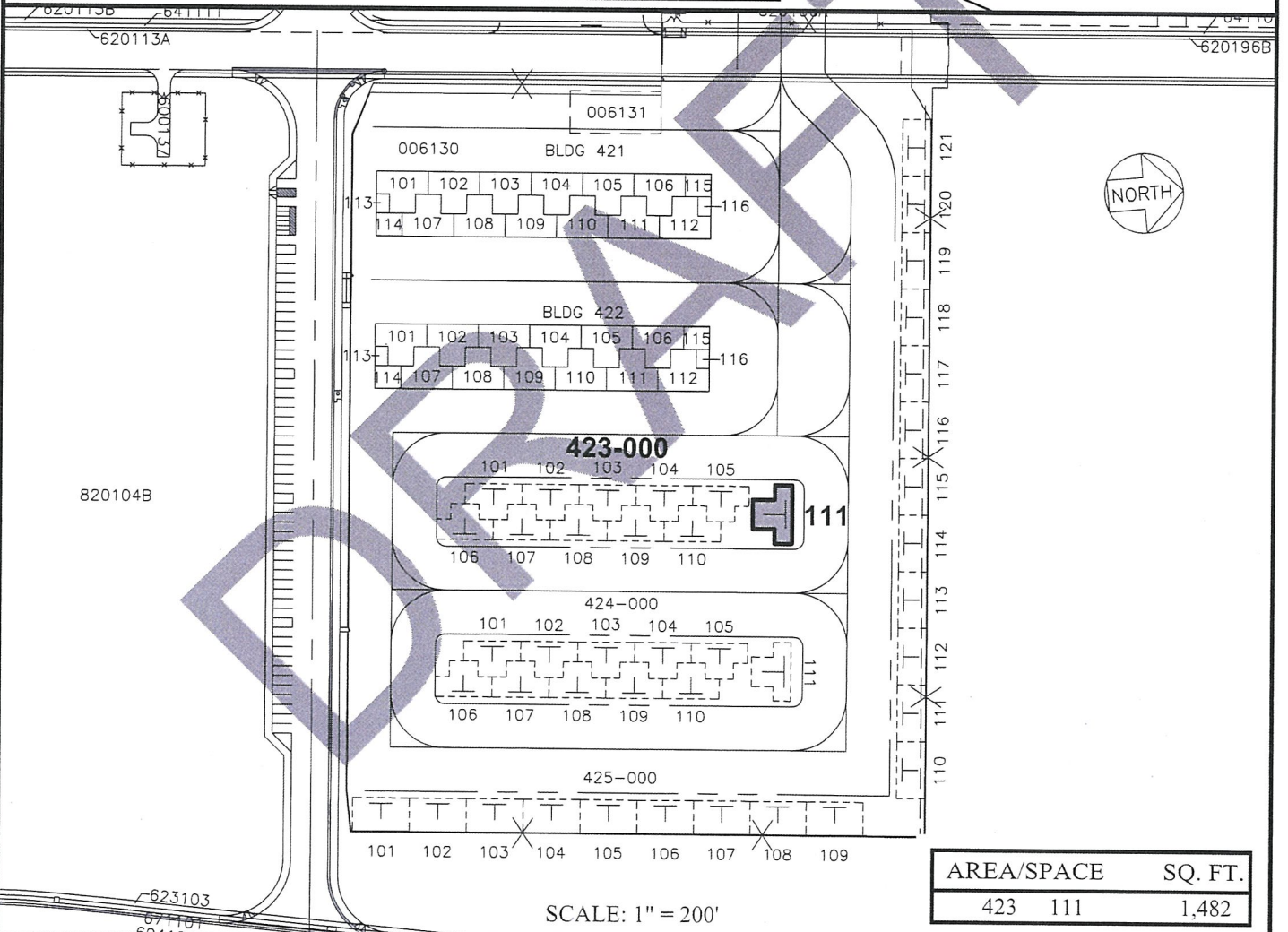
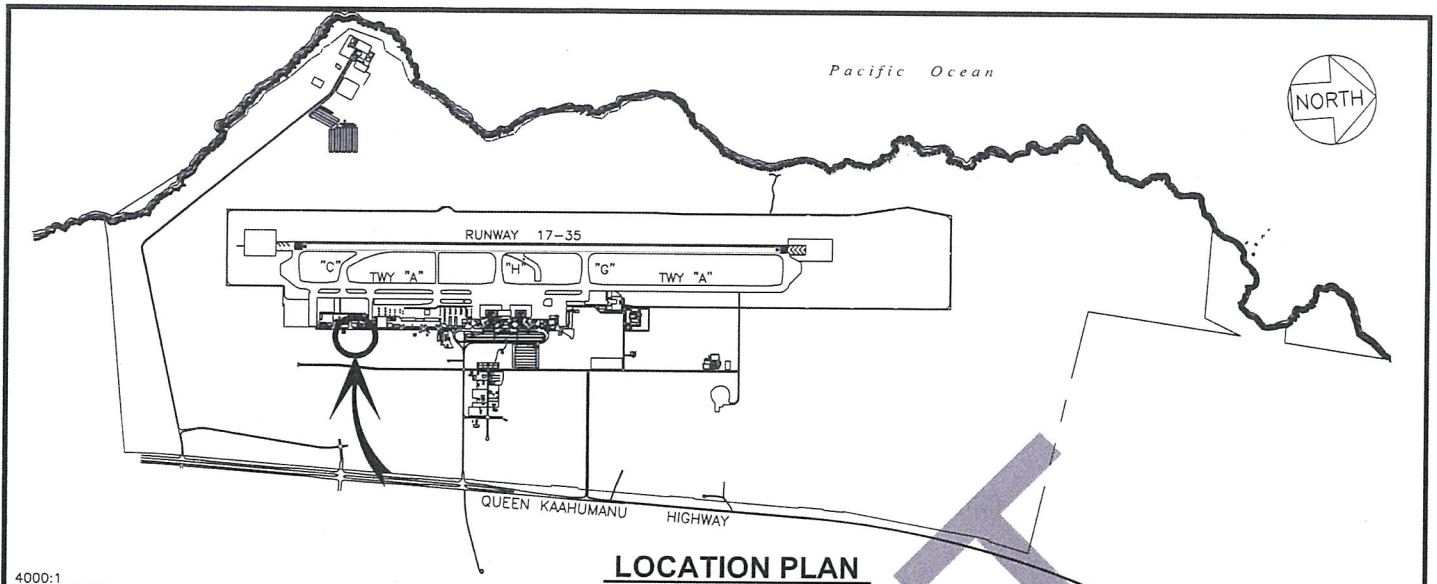


JADE T. BUTAY
Director of Transportation

APPROVED FOR SUBMITTAL:



SUZANNE D. CASE
Chairperson and Member



DRAFT

DATE : NOVEMBER 2020

EXHIBIT: **A**



Airports Division

KUPAU INC.

TIE DOWN
AND T-HANGARS

423111

PLAT 40

ELLISON ONIZUKA KONA INTERNATIONAL AIRPORT AT KEAHOE

N:\AIRPORTS\KOA_Kona\CAD\PM\koa_423111-01_draft.dwg