

DAVID Y. IGE  
GOVERNOR



STATE OF HAWAII  
DEPARTMENT OF TRANSPORTATION  
869 PUNCHBOWL STREET  
HONOLULU, HAWAII 96813-5097

JADE T. BUTAY  
DIRECTOR

Deputy Directors  
LYNN A. S. ARAKI-REGAN  
DEREK J. CHOW  
ROSS M. HIGASHI  
EDWIN H. SNIFFEN

IN REPLY REFER TO:

Board of Land and  
Natural Resources  
State of Hawai'i  
Honolulu, Hawai'i

ISSUANCE OF A REVOCABLE PERMIT FOR A T-HANGAR FOR STORAGE  
AND MAINTENANCE OF AIRCRAFT AND OFFICE SPACE  
CIVIL AIR PATROL  
ELLISON ONIZUKA KONA INTERNATIONAL AIRPORT AT KEĀHOLE  
TAX MAP KEY: (3) 7-3-43: PORTION OF 03

HAWAII

LEGAL REFERENCE:

Section 171-55, Hawai'i Revised Statutes (HRS).

APPLICANT:

Civil Air Patrol (CAP) whose business address is 419 Lele Street, Honolulu, Hawai'i 96820.

LOCATION AND TAX MAP KEY:

Portion of Ellison Onizuka Kona International Airport at Keāhole (KOA), Kailua-Kona, Island of Hawai'i, identified by Tax Map Key: 3rd Division, 7-3-43: Portion of 03.

AREA:

Building/Room No. 421-112, containing an area of approximately 1,471 square feet; and Building/Room No. 421-116, containing an area of approximately 221 square feet, as shown and delineated on the attached Exhibit A.

ZONING:

State Land Use District:  
County of Hawai'i:

Urban & Conservation  
Industrial (MG-1a) and Open

**ITEM M-5**

BLNR – ISSUANCE OF A REVOCABLE PERMIT FOR A T-HANGAR FOR STORAGE AND MAINTENANCE OF AIRCRAFT AND OFFICE SPACE, CIVIL AIR PATROL  
Page 2

LAND TITLE STATUS:

Section 5(a) lands of the Hawai'i Admission Act: Ceded  
DHHL 30% entitlement lands pursuant to Hawai'i Admission Act YES \_\_\_ NO X

CURRENT USE STATUS:

Airport and aeronautical purposes.

CHARACTER OF USE:

CAP will use the spaces for storage and maintenance of aircraft and an office.

COMMENCEMENT DATE:

Upon execution of the revocable permit.

MONTHLY RENTAL:

Not Applicable (N/A)

SECURITY DEPOSIT:

N/A

DCCA VERIFICATION:

Place of business registration confirmed: N/A

Registered business name confirmed: N/A

Good standing confirmed: N/A

CHAPTER 343, HRS - ENVIRONMENTAL ASSESSMENT:

The State of Hawaii, Department of Transportation, Airports Division (DOTA), has determined the subject land areas are covered by the Final Environmental Assessment (EA)/Finding of No Significant Impact (FONSI), Airfield, Terminal, and Facility Improvements for the Kona International Airport at Keāhole, published by the Office of Environmental Quality Control (OEQC) in the March 23, 2013, issue of The Environmental Notice. Accordingly, all relevant mitigation from the EA and best management practices will be implemented to address the minimum impacts of this action.

BLNR – ISSUANCE OF A REVOCABLE PERMIT FOR A T-HANGAR FOR STORAGE  
AND MAINTENANCE OF AIRCRAFT AND OFFICE SPACE, CIVIL AIR PATROL  
Page 3

REMARKS:

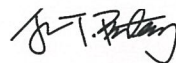
In accordance with Section 171-55 HRS, relating to Permits, the Department of Transportation proposes to issue a month-to-month revocable permit to CAP for a T-hangar for the storage and maintenance of aircraft and an office at no charge based on FAA Circular 5190.6B-17.19 Exception for Military Aeronautical Units.

FAA Circular 5190.6B-17.19 Exception for Military Aeronautical Units states in part, “The FAA acknowledges that many airports provide facilities to military units with aeronautical missions at nominal lease rates. The FAA does not consider this practice inconsistent with the requirement for a self-sustaining airport rate structure... The search and rescue (SAR) and disaster relief roles played by Coast Guard, the U.S. Air Force Auxiliary, and the Civil Air Patrol are also recognized as a prime aeronautical role. These units generally provide services that directly benefit airport operators and safety.”

RECOMMENDATION:

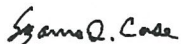
That the Board authorize the Department of Transportation to issue a month-to-month revocable permit to CAP, subject to: (1) terms and conditions herein outlined, which are by reference incorporated herein; and (2) such additional terms and conditions as may be prescribed by the Director of Transportation to best serve the interests of the State.

Respectfully submitted,

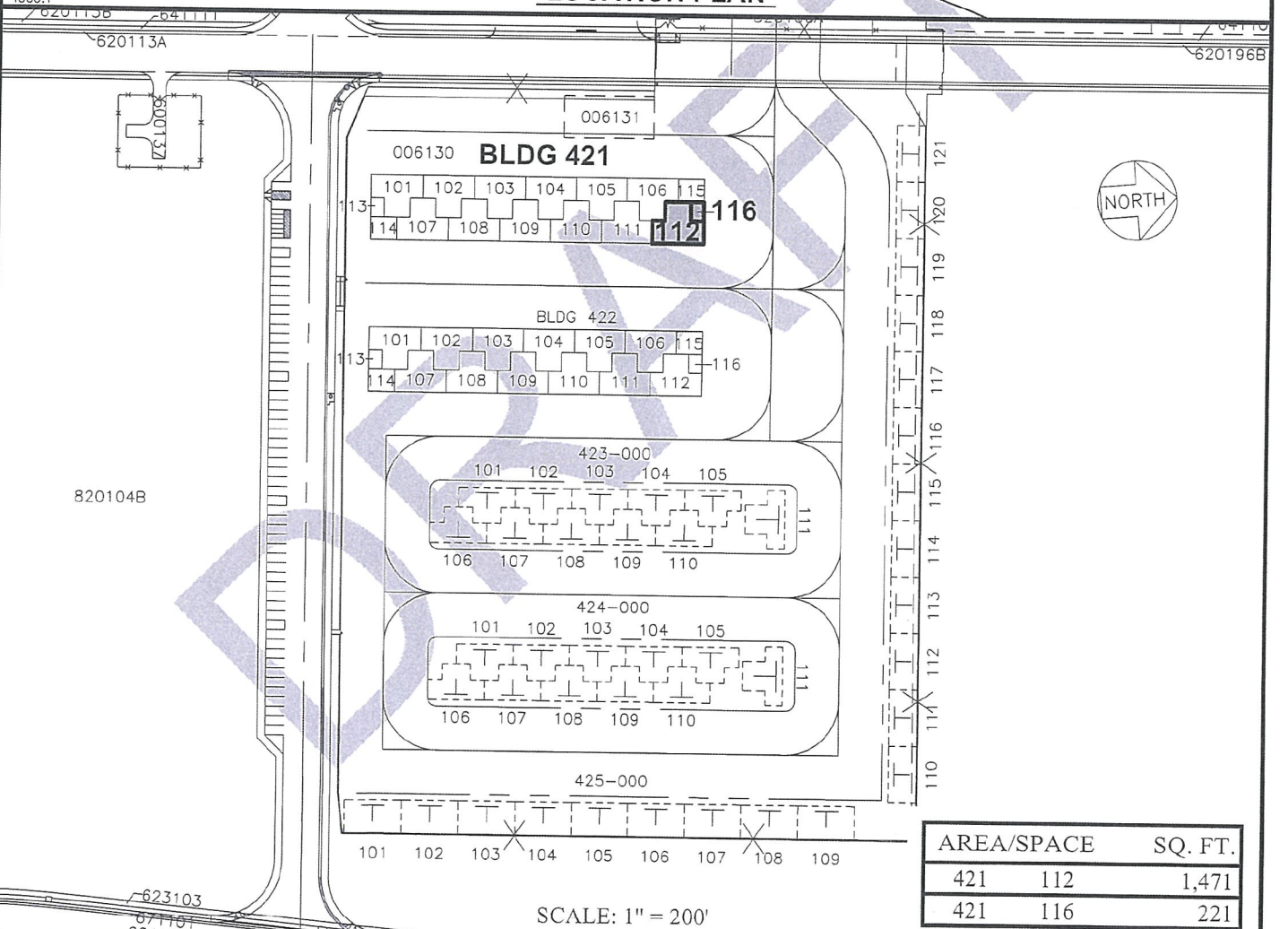
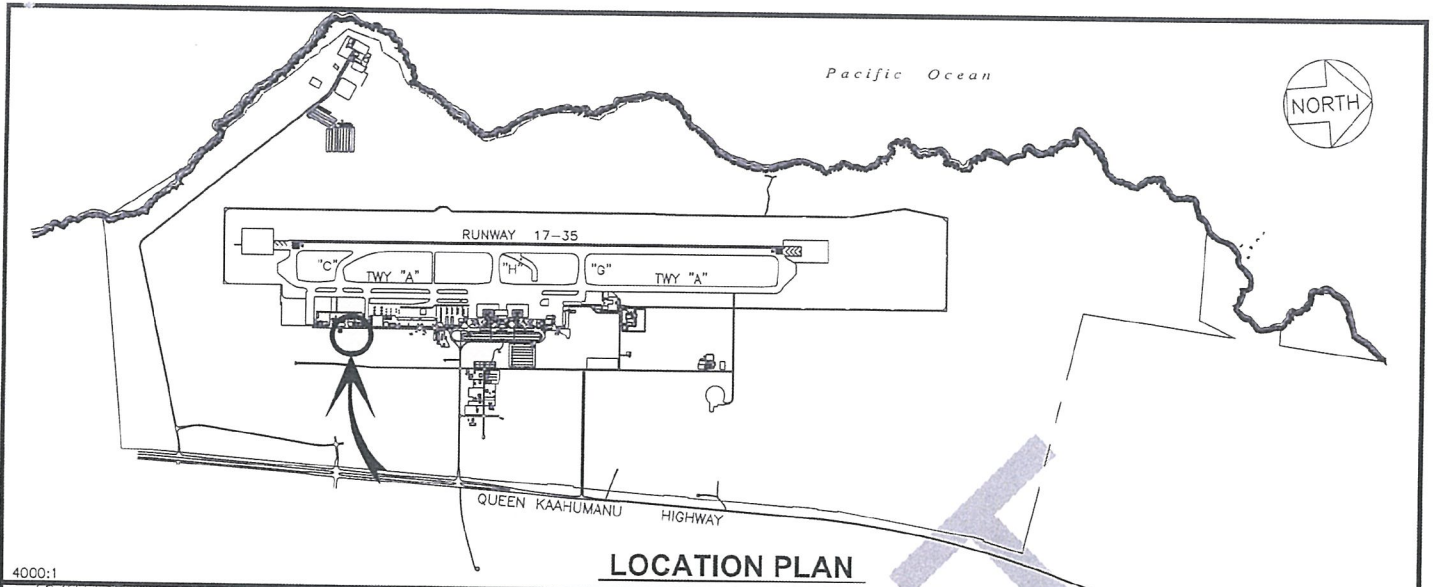


JADE T. BUTAY  
Director of Transportation

APPROVED FOR SUBMITTAL:



SUZANNE D. CASE  
Chairperson and Member



AREA/SPACE	SQ. FT.
421 112	1,471
421 116	221

DRAFT DATE : DECEMBER 2020 EXHIBIT: **A**

<p>DEPARTMENT OF TRANSPORTATION STATE OF HAWAII Airports Division</p>	CIVIL AIR PATROL	T-HANGARS	421112 421116
			PLAT 40

**ELLISON ONIZUKA KONA INTERNATIONAL AIRPORT AT KEAHOLE**

N:\AIRPORTS\KOA\_Kona\CAD\PM\koa\_421112-01\_draft.dwg