

DAVID Y. IGE  
GOVERNOR



STATE OF HAWAII  
DEPARTMENT OF TRANSPORTATION  
869 PUNCHBOWL STREET  
HONOLULU, HAWAII 96813-5097

JADE BUTAY  
DIRECTOR

Deputy Directors  
LYNN A.S. ARAKI-REGAN  
DEREK J. CHOW  
ROSS M. HIGASHI  
EDWIN H. SNIFFEN

IN REPLY REFER TO:

Board of Land and  
Natural Resources  
State of Hawai'i  
Honolulu, Hawai'i

ISSUANCE OF A REVOCABLE PERMIT FOR  
SPACE FOR TWO STORAGE CONTAINERS  
MAUNA LOA HELICOPTER TOURS LLC  
LĪHU'E AIRPORT  
TAX MAP KEY: (4) 3-5-01: PORTION OF 08

KAUAI

LEGAL REFERENCE:

Section 171-55, Hawai'i Revised Statutes (HRS).

APPLICANT:

Mauna Loa Helicopter Tours LLC (MLH) whose business address is 73-310 U'u Street,  
Kailua-Kona, Hawai'i, 96740.

LOCATION AND TAX MAP KEY:

Portion of Līhu'e Airport, Līhu'e, Island of Kaua'i, identified by  
Tax Map Key: 4th Division, 3-5-01: Portion of 08.

AREA:

Area/Space No. 004-120B, containing an area of approximately 840 square feet of  
improved, paved land, as shown and delineated on the attached Exhibit "A".

ZONING:

State Land Use District: Urban  
County of Kaua'i: Industrial General/Special Treatment-Public Use (IG/ST-P)

**ITEM M-10**

BLNR – ISSUANCE OF A REVOCABLE PERMIT  
FOR SPACE FOR TWO STORAGE CONTAINERS  
MAUNA LOA HELICOPTER TOURS LLC  
Page 2

LAND TITLE STATUS:

Section 5(a) lands of the Hawai'i Admission Act: Non-Ceded  
DHHL 30% entitlement lands pursuant to Hawai'i Admission Act YES\_ NO X

CURRENT USE STATUS:

Airport and aeronautical purposes.

CHARACTER OF USE:

MLH will use the space to place two (2) containers for the storage of tools, equipment and parts.

COMMENCEMENT DATE:

Upon execution of the revocable permit.

MONTHLY RENTAL:

\$162.40 (based on a rate of \$2.32 per square foot per annum for improved, paved land as determined from the Department of Transportation, Airports Division schedule of rates and charges established by appraisal of Airports property statewide).

SECURITY DEPOSIT:

\$487.20, or three times the monthly rental in effect.

DCCA VERIFICATION:

Place of business registration confirmed: YES X NO \_\_\_\_\_  
Registered business name confirmed: YES X NO \_\_\_\_\_  
Good standing confirmed: YES X NO \_\_\_\_\_

CHAPTER 343, HRS - ENVIRONMENTAL ASSESSMENT:

The State of Hawai'i, Department of Transportation, Airports Division (DOTA), has determined that the environmental impacts of the proposed disposition for the subject land use is covered by the Līhu'e Airport Ahukini Road Realignment and General Aviation Subdivision Final Environmental Assessment (FEA), published by the Office of Environmental Quality Control (OEQC) in the April 23, 1997, issue of The Environmental Notice. Accordingly, all relevant mitigation from the FEA and best management practices will be implemented to address the minimum impacts of this action.

BLNR – ISSUANCE OF A REVOCABLE PERMIT  
FOR SPACE FOR TWO STORAGE CONTAINERS  
MAUNA LOA HELICOPTER TOURS LLC  
Page 3

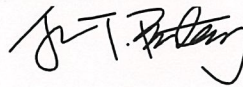
REMARKS:

In accordance with Section 171-55, HRS, relating to Permits, the Department of Transportation proposes to issue a month-to-month revocable permit to MLH for space to place two storage containers for the storage of tools, equipment and parts as part of its helicopter tour operations at LIH.

RECOMMENDATION:

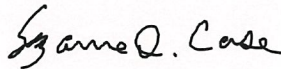
That the Board authorize the Department of Transportation to issue a month-to-month revocable permit to MLH subject to: (1) terms and conditions herein outlined, which are by reference incorporated herein; and (2) such additional terms and conditions as may be prescribed by the Director of Transportation to best serve the interests of the State.

Respectfully submitted,

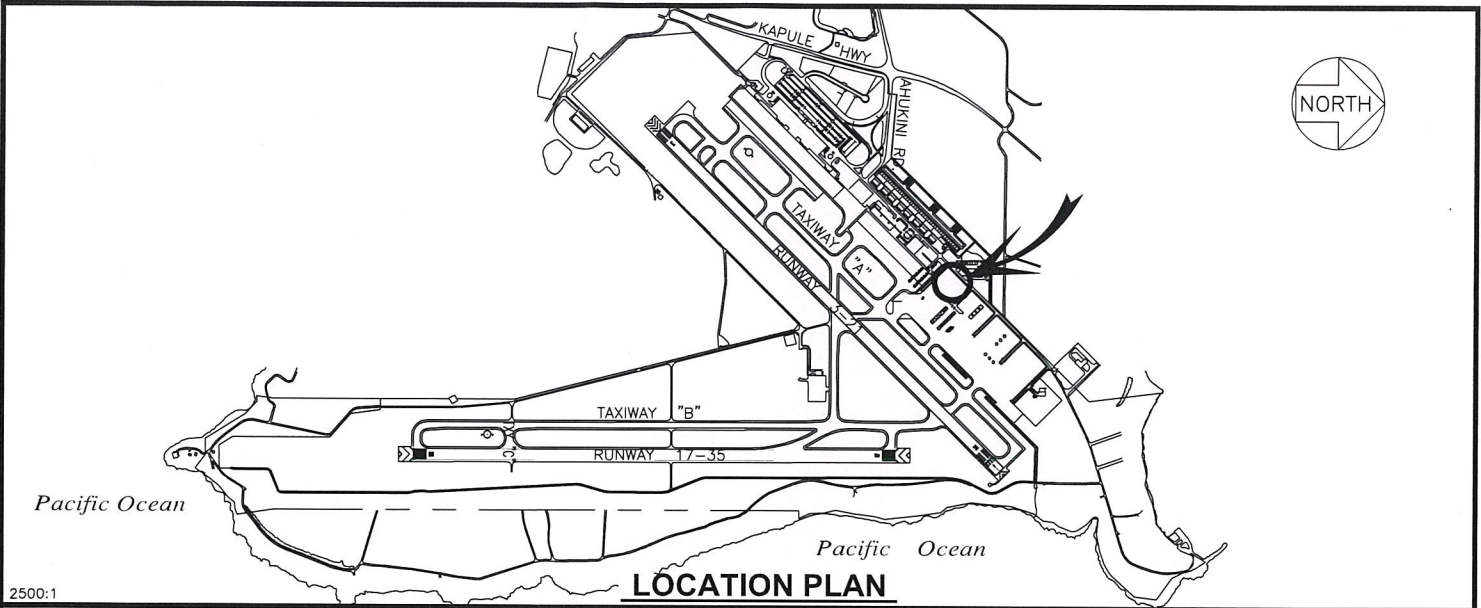


JADE T. BUTAY  
Director of Transportation

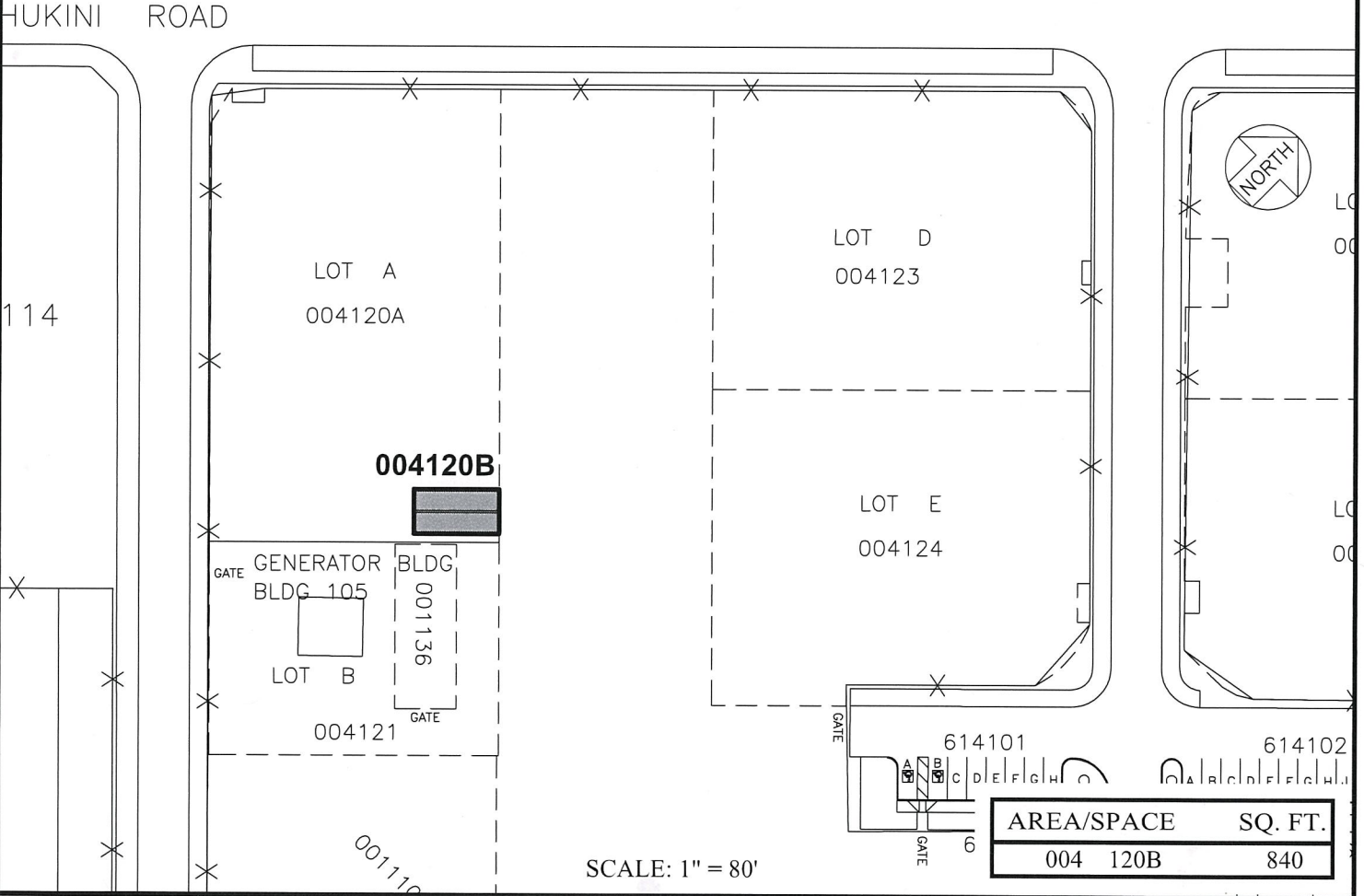
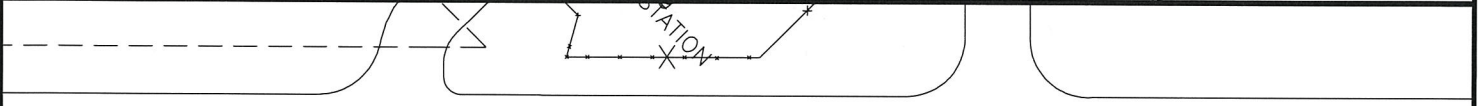
APPROVED FOR SUBMITTAL:



SUZANNE D. CASE  
Chairperson and Member



2500:1



RP-9067

DATE : JANUARY 2021

EXHIBIT: **A**



MAUNA LOA  
HELICOPTER TOURS LLC

LOT A (PARTIAL)

004120B  
PLATS B1, E1, 35