

DAVID Y. IGE
GOVERNOR



STATE OF HAWAII
DEPARTMENT OF TRANSPORTATION
869 PUNCHBOWL STREET
HONOLULU, HAWAII 96813-5097

JADE T. BUTAY
DIRECTOR

Deputy Directors
LYNN A. S. ARAKI-REGAN
DEREK J. CHOW
ROSS M. HIGASHI
EDWIN H. SNIFFEN

IN REPLY REFER TO:

Board of Land and
Natural Resources
State of Hawai'i
Honolulu, Hawai'i

ISSUANCE OF A REVOCABLE PERMIT FOR COMMERCIAL USE OF A
T-HANGAR FOR STORAGE AND MAINTENANCE OF AIRCRAFT
SKYCRAFT AIR MAINTENANCE, LTD.
ELLISON ONIZUKA KONA INTERNATIONAL AIRPORT AT KEĀHOLE
TAX MAP KEY: (3) 7-3-43: PORTION OF 03

HAWAII

LEGAL REFERENCE:

Section 171-55, Hawai'i Revised Statutes (HRS).

APPLICANT:

Skycraft Air Maintenance, LTD. (Skycraft), whose business address is 73-310 U'u Street,
Kailua-Kona, Hawai'i 96740.

LOCATION AND TAX MAP KEY:

Portion of Ellison Onizuka Kona International Airport at Keāhole (KOA), Kailua-Kona,
Island of Hawai'i, identified by Tax Map Key: 3rd Division, 7-3-43: Portion of 03.

AREA:

Building/Room No. 421-102, containing an area of approximately 1,466 square feet, as
shown and delineated on the attached Exhibit A.

ZONING:

State Land Use District:
County of Hawai'i:

Urban & Conservation
Industrial (MG-1a) and Open

ITEM M-7

BLNR – ISSUANCE OF A REVOCABLE PERMIT FOR COMMERCIAL USE OF A T-HANGAR FOR STORAGE AND MAINTENANCE OF AIRCRAFT, SKYCRAFT AIR MAINTENANCE, LTD.

Page 2

LAND TITLE STATUS:

Section 5(a) lands of the Hawai'i Admission Act: Ceded
DHHL 30% entitlement lands pursuant to Hawai'i Admission Act YES ___ NO X

CURRENT USE STATUS:

Airport and aeronautical purposes.

CHARACTER OF USE:

Skycraft will use the space for storage and maintenance of aircraft (1990 Robinson R22 Beta, N-721HH).

COMMENCEMENT DATE:

Upon execution of the revocable permit.

MONTHLY RENTAL:

DOTA is in the process of determining the annual fair market lease rental values and commercial use rental values for new T-hangars at KOA.

SECURITY DEPOSIT:

Three times the monthly rental in effect.

DCCA VERIFICATION:

Place of business registration confirmed: YES X NO ___
Registered business name confirmed: YES X NO ___
Good standing confirmed: YES X NO ___

CHAPTER 343. HRS - ENVIRONMENTAL ASSESSMENT:

The State of Hawai'i, Department of Transportation, Airports Division (DOTA), has determined the subject land areas are covered by the Final Environmental Assessment (EA)/Finding of No Significant Impact (FONSI), Airfield, Terminal, and Facility Improvements for the Kona International Airport at Keāhole, published by the Office of Environmental Quality Control (OEQC) in the March 23, 2013, issue of The Environmental Notice. Accordingly, all relevant mitigation from the EA and best management practices will be implemented to address the minimum impacts of this action.

BLNR – ISSUANCE OF A REVOCABLE PERMIT FOR COMMERCIAL USE OF A T-HANGAR FOR STORAGE AND MAINTENANCE OF AIRCRAFT, SKYCRAFT AIR MAINTENANCE, LTD.

Page 3

REMARKS:

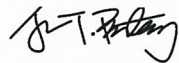
In accordance with Section 171-55 HRS, relating to Permits, the Department of Transportation proposes to issue a month-to-month revocable permit to Skycraft for commercial use of a T-hangar for the storage and maintenance of aircraft as part of its Part 135 repair station operations at KOA.

The DOTA is constructing new T-hangars at KOA under State Project No. AH2023-16, furnish and deliver new T-hangars, KOA at Ellison Onizuka Kona International Airport at Keāhole, Kailua-Kona (Project). The Project is nearly completed, and DOTA has solicited for appraisal services to determine the fair market lease rental values and commercial use rental values for the new T-hangars at KOA. While DOTA waits for the appraisal report to determine the monthly rental, DOTA is requesting Land Board approval to issue a month-to-month revocable permit to Skycraft.

RECOMMENDATION:

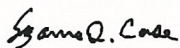
That the Board authorize the Department of Transportation to issue a month-to-month revocable permit to Skycraft, subject to: (1) terms and conditions herein outlined, which are by reference incorporated herein; and (2) such additional terms and conditions as may be prescribed by the Director of Transportation to best serve the interests of the State.

Respectfully submitted,

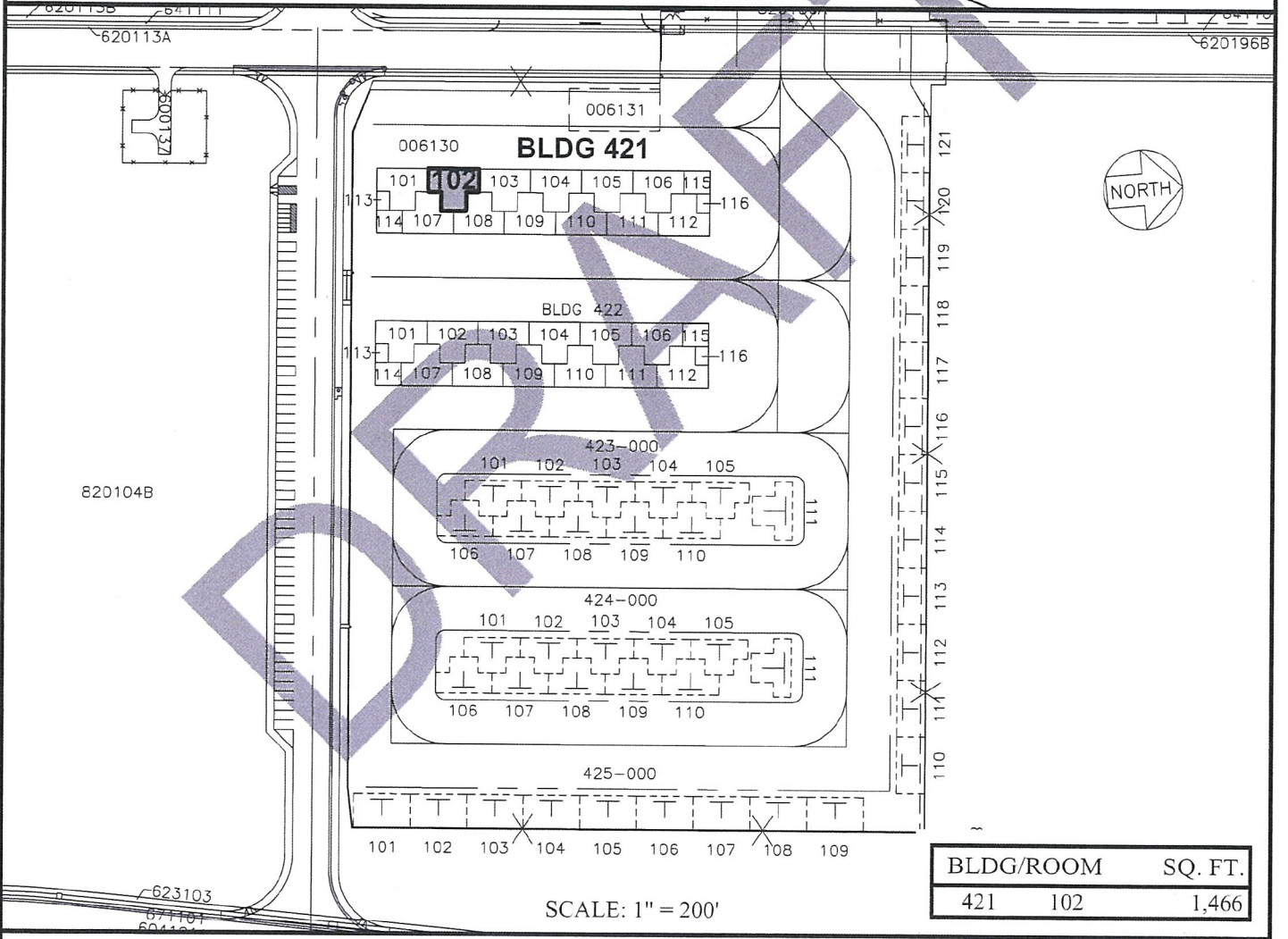
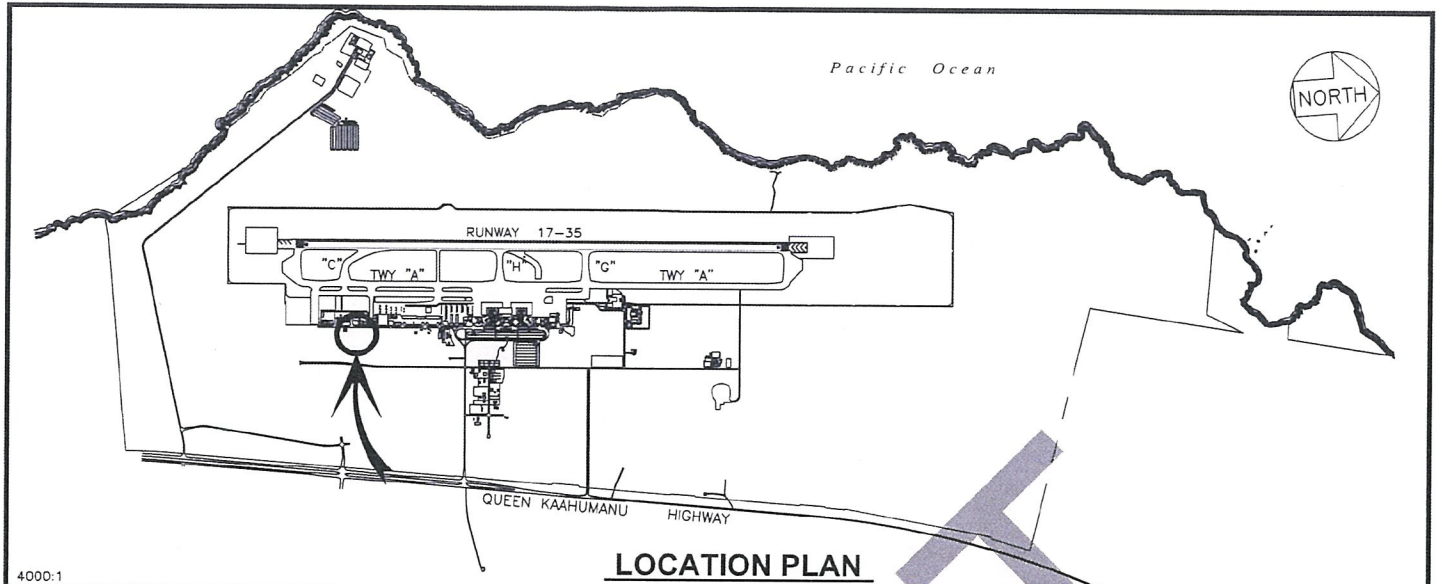


JADE T. BUTAY
Director of Transportation

APPROVED FOR SUBMITTAL:



SUZANNE D. CASE
Chairperson and Member



DRAFT

DATE : NOVEMBER 2020

EXHIBIT: **A**



SKYCRAFT AIR
MAINTENANCE, LTD.

T-HANGARS

421102

PLAT 40

ELLISON ONIZUKA KONA INTERNATIONAL AIRPORT AT KEAHOLE

N:\AIRPORTS\KOA_Kona\CAD\PM\koa_421102-01_draft.dwg