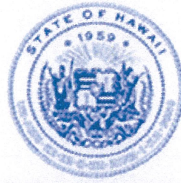


DAVID Y. IGE
GOVERNOR



STATE OF HAWAII
DEPARTMENT OF TRANSPORTATION
869 PUNCHBOWL STREET
HONOLULU, HAWAII 96813-5097

JADE T. BUTAY
DIRECTOR

Deputy Directors
LYNN A.S. ARAKI-REGAN
DEREK J. CHOW
ROSS M. HIGASHI
EDWIN H. SNIFFEN

IN REPLY REFER TO:

Board of Land and
Natural Resources
State of Hawai'i
Honolulu, Hawai'i

ISSUANCE OF A REVOCABLE PERMIT FOR RAMP SPACE FOR
EQUIPMENT STORAGE
TRANS EXECUTIVE AIRLINES OF HAWAII, INC.
ELLISON ONIZUKA KONA INTERNATIONAL AIRPORT AT KEĀHOLE
TAX MAP KEY: (3) 7-3-43: PORTION OF 03

HAWAI'I

LEGAL REFERENCE:

Section 171-55, Hawai'i Revised Statutes (HRS).

APPLICANT:

Trans Executive Airlines of Hawaii, Inc. (TEA), whose business address is
PO Box 29239, Honolulu, Hawai'i 96820.

LOCATION AND TAX MAP KEY:

Portions of Ellison Onizuka Kona International Airport at Keāhole (KOA), Kailua-Kona,
Island of Hawai'i, identified by Tax Map Key: 3rd Division, 7-3-43: Portion of 03.

AREA:

Area/Space No. 630-171, containing an area of approximately 2,800 square feet,
as shown and delineated on the attached Exhibit A.

Area/Space No. 630-149, containing an area of approximately 2,000 square feet,
as shown and delineated on the attached Exhibit B.

ITEM M-3

BLNR – ISSUANCE OF A REVOCABLE PERMIT FOR RAMP SPACE FOR EQUIPMENT STORAGE, TRANS EXECUTIVE AIRLINES OF HAWAII, INC.

Page 2

ZONING:

State Land Use District: Urban & Conservation
County of Hawai'i: Industrial (MG-1a) and Open

LAND TITLE STATUS:

Section 5(a) lands of the Hawai'i Admission Act: Ceded
DHHL 30% entitlement lands pursuant to Hawai'i Admission Act YES ___ NO X

CURRENT USE STATUS:

Airport and aeronautical purposes.

CHARACTER OF USE:

TEA will use the spaces for equipment storage as part of its cargo operations.

COMMENCEMENT DATE:

Upon execution of the revocable permit.

MONTHLY RENTAL:

\$824.00 (as determined from the DOTA schedule of rates and charges established by appraisal of Airports property statewide).

SECURITY DEPOSIT:

\$2,472.00, or three times the monthly rental in effect

DCCA VERIFICATION:

Place of business registration confirmed:	YES <u>X</u>	NO _____
Registered business name confirmed:	YES <u>X</u>	NO _____
Good standing confirmed:	YES <u>X</u>	NO _____

CHAPTER 343, HRS - ENVIRONMENTAL ASSESSMENT:

The State of Hawaii, Department of Transportation, Airports Division (HDOT-A), has determined that the subject land areas are covered by the Keahole Airport Master Plan Final Environmental Impact Statement (EIS), published by the Office of Environmental

BLNR – ISSUANCE OF A REVOCABLE PERMIT FOR RAMP SPACE FOR EQUIPMENT STORAGE, TRANS EXECUTIVE AIRLINES OF HAWAII, INC.

Page 3

Quality Control (OEQC) in the November 8, 1988, issue of The Environmental Notice and accepted by the Governor on December 19, 1988. Accordingly, all relevant mitigation from the EIS and best management practices will be implemented to address the minimum impacts of this action.

REMARKS:

In accordance with Section 171-55 HRS, relating to Permits, the Department of Transportation proposes to issue a month-to-month revocable permit to TEA for ramp space for equipment storage as part of its cargo operations at KOA.

RECOMMENDATION:

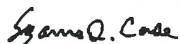
That the Board authorize the Department of Transportation to issue a month-to-month revocable permit to TEA, subject to: (1) terms and conditions herein outlined, which are by reference incorporated herein; and (2) such additional terms and conditions as may be prescribed by the Director of Transportation to best serve the interests of the State.

Respectfully submitted,

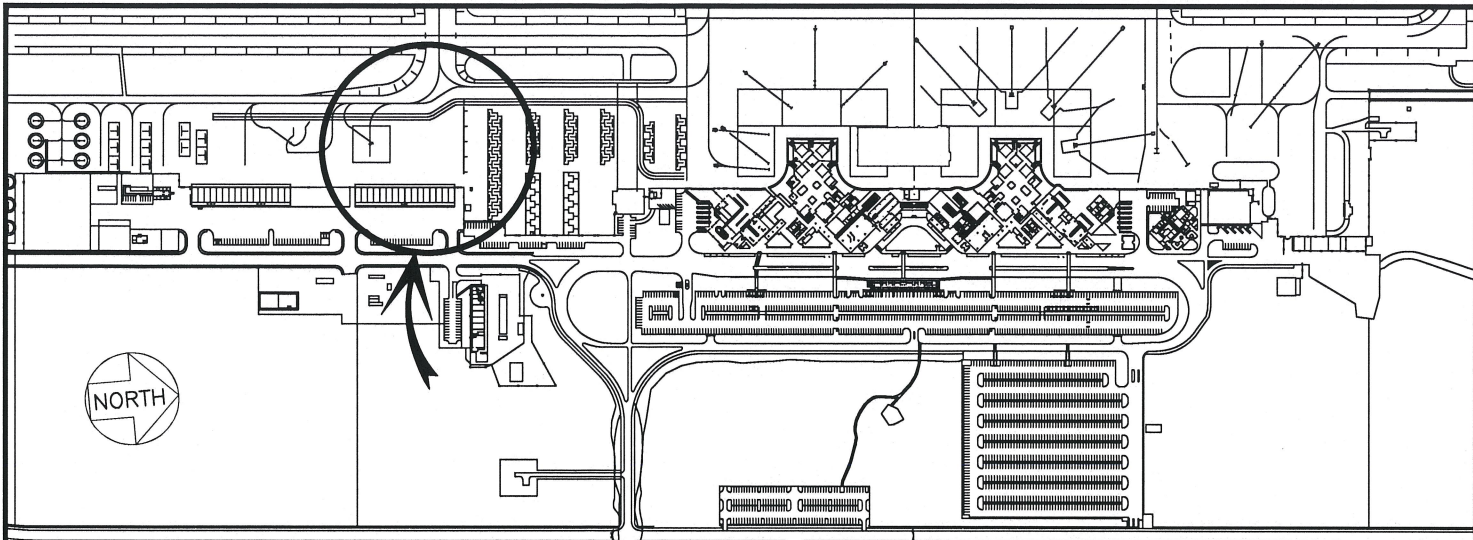


JADE T. BUTAY
Director of Transportation

APPROVED FOR SUBMITTAL:

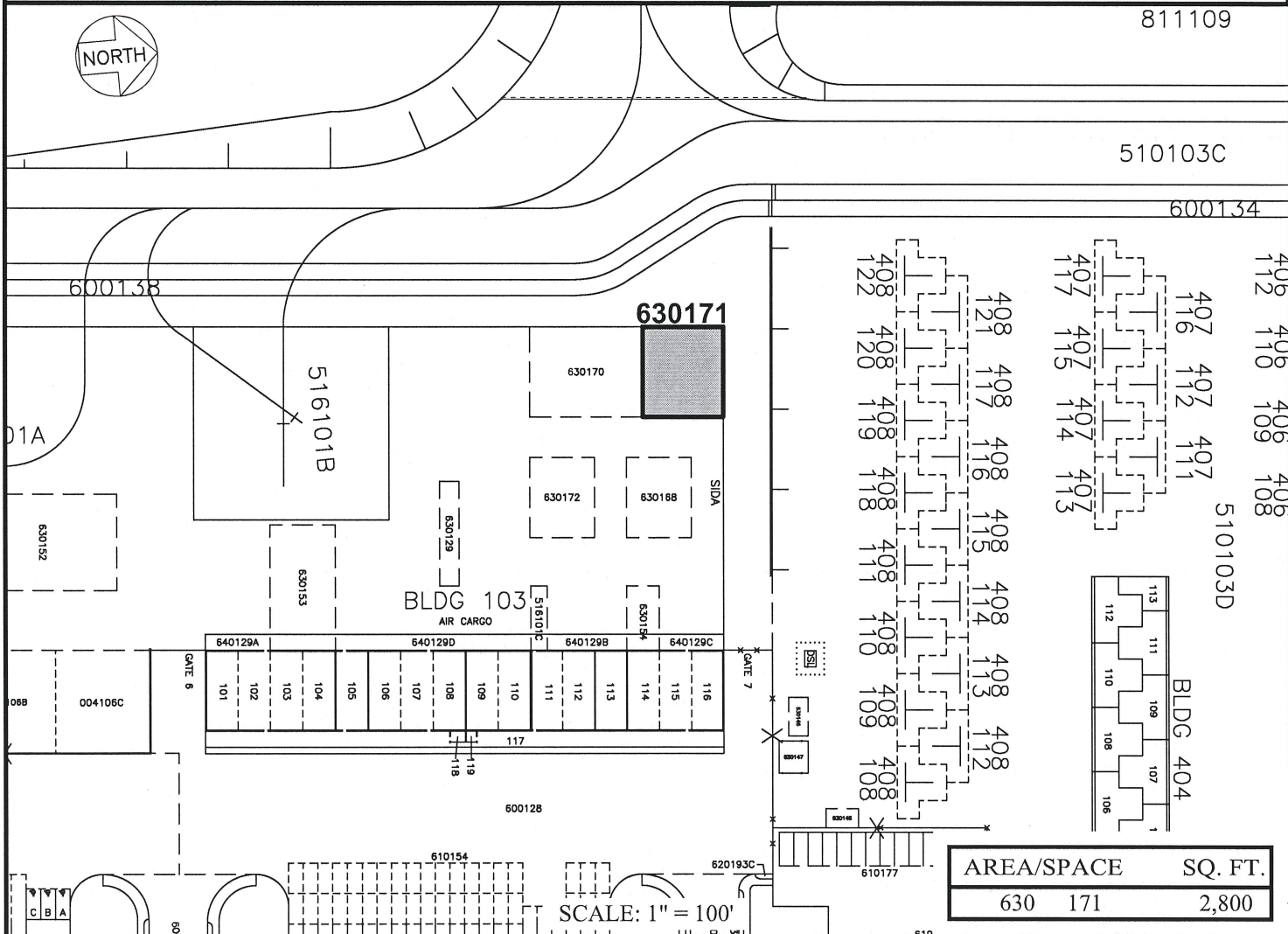


SUZANNE D. CASE
Chairperson and Member



LOCATION PLAN

600:1



SCALE: 1" = 100'

RP-9055

DATE : AUGUST 2020

EXHIBIT: **A**



Airports Division

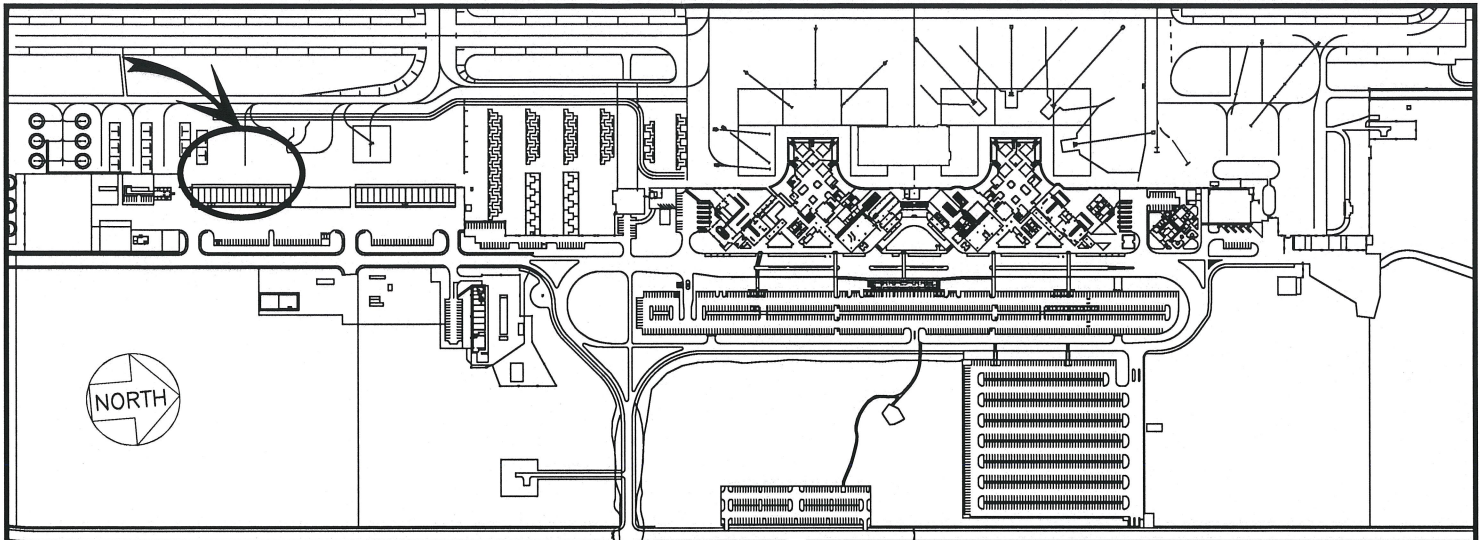
TRANS EXECUTIVE
AIRLINES OF HAWAII, INC.

LOT

630171
PLAT C1, 39

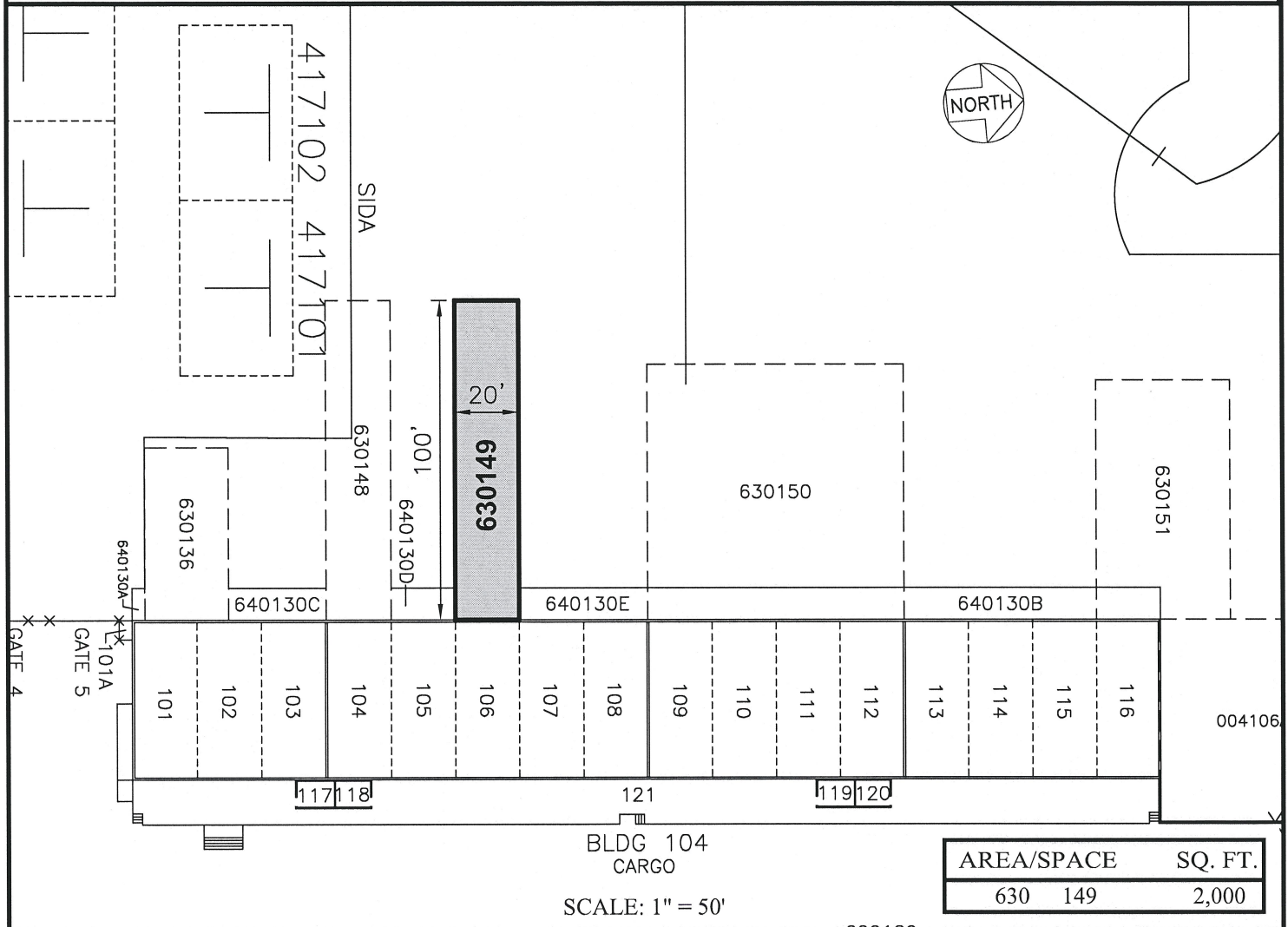
ELLISON ONIZUKA KONA INTERNATIONAL AIRPORT AT KEAHOLE

N:\AIRPORTS\KOA_Kona\CAD\PM\koa_630171-01_draft.dwg



LOCATION PLAN

600:1



SCALE: 1" = 50'

RP-9055

DATE : NOVEMBER 2020

EXHIBIT: **B**



Airports Division

TRANS EXECUTIVE
AIRLINES OF HAWAII, INC.

PAVED AREA
GROUND LEVEL

630149

PLATS B1, C1, 39

ELLISON ONIZUKA KONA INTERNATIONAL AIRPORT AT KEAHOLE