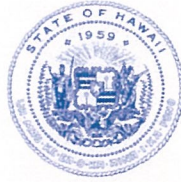


DAVID Y. IGE
GOVERNOR



STATE OF HAWAII
DEPARTMENT OF TRANSPORTATION
869 PUNCHBOWL STREET
HONOLULU, HAWAII 96813-5097

JADE T. BUTAY
DIRECTOR

Deputy Directors
LYNN A.S. ARAKI-REGAN
DEREK J. CHOW
ROSS M. HIGASHI
EDWIN H. SNIFFEN

IN REPLY REFER TO:

Board of Land and
Natural Resources
State of Hawai'i
Honolulu, Hawai'i

ISSUANCE OF A REVOCABLE PERMIT FOR COMMERCIAL USE OF A
T-HANGAR FOR STORAGE AND MAINTENANCE OF AIRCRAFT
WINDWARD AVIATION, INC.
KALAELOA AIRPORT
TAX MAP KEY: (1) 9-1-013: 151

O'AHU

REQUEST:

Issuance of a Revocable Permit for Commercial use of a T-Hangar for storage and maintenance of aircraft to Windward Aviation, Inc., situated at Kalaeloa Airport.

LEGAL REFERENCE:

Section 171-55, Hawai'i Revised Statutes (HRS).

APPLICANT:

Windward Aviation, Inc., whose mailing address is P. O. Box 596, Puunene, Hawai'i 96784.

LOCATION AND TAX MAP KEY:

A portion of Kalaeloa Airport, Kapolei, Island of O'ahu, State of Hawai'i, identified by Tax Map Key: 1st Division, 9-1-013: 151.

AREA:

Building/Room No. 409-103, containing an area of approximately 1,742 square feet, as shown and delineated on the attached map labeled Exhibit "A".

ITEM M-6

BLNR – ISSUANCE OF A REVOCABLE PERMIT FOR COMMERCIAL USE OF A
T-HANGAR FOR STORAGE AND MAINTENANCE OF AIRCRAFT, WINDWARD
AVIATION, INC.

PAGE 2

ZONING:

State Land Use District: Urban
City and County of Honolulu LUO: P-2 (To be rezoned in the future)

LAND TITLE STATUS:

Non-ceded - Section 5(a) lands of the Hawai'i Admission Act
DHHL 30% entitlement lands pursuant to Hawai'i Admission Act YES ____ NO X

CURRENT USE STATUS:

Land presently encumbered by Governor's Executive Order No. 3861, setting aside
Kalaeloa Airport under the control and management of the Department of Transportation,
Airports Division (DOTA), State of Hawai'i, for Airport Purposes.

CHARACTER OF USE:

Commercial use of a T-hangar for storage and maintenance of aircraft, (1978 Hughes
369D Helicopter, Tail No. N-690WA). The helicopter will be used on-call, exclusively
by Hawaiian Electric Company.

COMMENCEMENT DATE:

To be determined by the Director of Transportation at a later date.

MONTHLY RENTAL:

\$1,916.20, as determined from the DOTA schedule of rates and charges for T-Hangar
(Commercial Rate), established by appraisal of Airports property statewide.

SECURITY DEPOSIT:

\$5,748.60 or three (3) times the monthly rental in effect.

CHAPTER 343, HRS - ENVIRONMENTAL ASSESSMENT:

The subject land area is covered by the Final Environmental Assessment for the Kalaeloa
Airfield Development Plan Improvements, State Project No. AO5011-02 dated June 2010.
This Environmental Assessment was prepared by Wilson Okamoto Corp. for the State of
Hawai'i, Department of Transportation, Airports Division, in part to evaluate the
environmental effects of the recommended Kalaeloa Airfield Master Plan to meet existing
and forecast general aviation demands.

BLNR – ISSUANCE OF A REVOCABLE PERMIT FOR COMMERCIAL USE OF A
T-HANGAR FOR STORAGE AND MAINTENANCE OF AIRCRAFT, WINDWARD
AVIATION, INC.

PAGE 3

REMARKS:

The issuance of a revocable permit to Windward Aviation, Inc., for commercial use of a T-hangar for storage and maintenance of aircraft at Kalaeloa Airport complies with Chapter 343, Exemption Class 1.D.10 as a continuing aeronautical use, and is in accordance with Section 171-55 HRS, relating to Permits.

RECOMMENDATION:

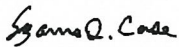
That the Board authorize the Department of Transportation to issue a month-to-month revocable permit to Windward Aviation, Inc., subject to: (1) terms and conditions herein outlined, which are by reference incorporated herein; and (2) such additional terms and conditions as may be prescribed by the Director of Transportation to best serve the interests of the State.

Respectfully submitted,

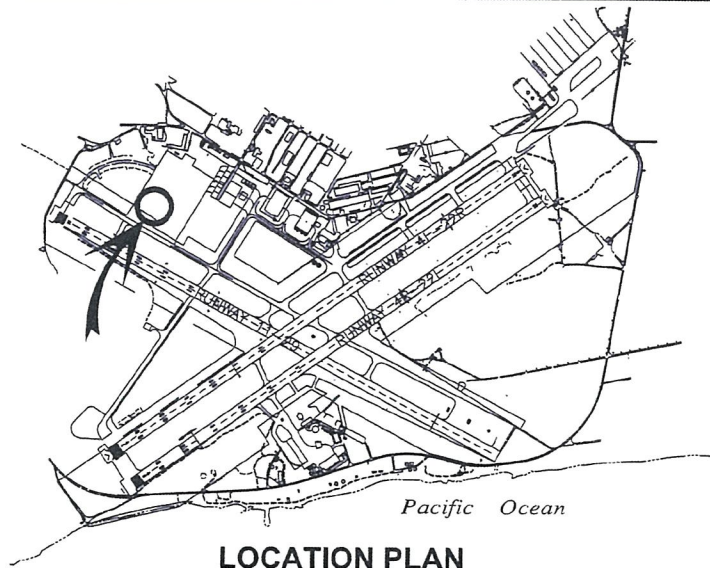


JADE T. BUTAY
Director of Transportation

APPROVED FOR SUBMITTAL:

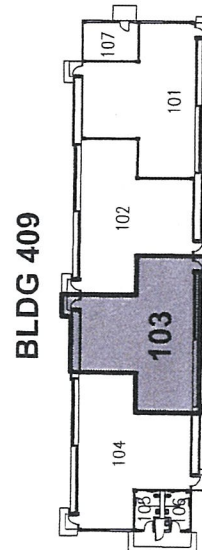
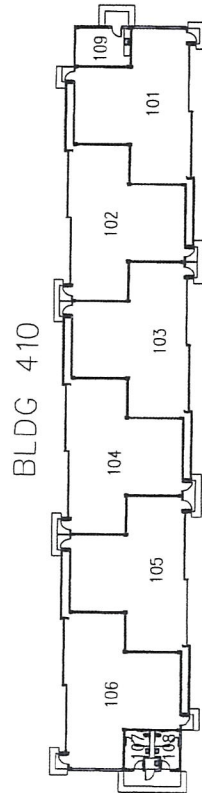
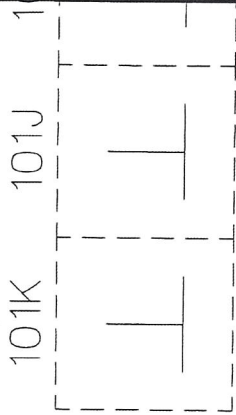


SUZANNE D. CASE
Chairperson and Member



LOCATION PLAN

3000:1



001117

SCALE: 1" = 60'

BLDG/ROOM	SQ. FT.
409 103	1,742

RP-9074

DATE : MARCH 2021

EXHIBIT: **A**



Airports Division

WINDWARD
AVIATION, INC.

T-HANGAR
GENERAL AVIATION

409103

KALAELOA AIRPORT

N:\AIRPORTS\JRF_Kolaeloa\CAD\PM\jrf_409103-01.dwg