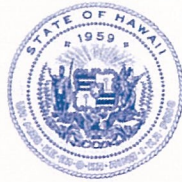


DAVID Y. IGE
GOVERNOR



STATE OF HAWAII
DEPARTMENT OF TRANSPORTATION
869 PUNCHBOWL STREET
HONOLULU, HAWAII 96813-5097

JADE T. BUTAY
DIRECTOR

Deputy Directors
LYNN A. S. ARAKI-REGAN
DEREK J. CHOW
ROSS M. HIGASHI
EDWIN H. SNIFFEN

IN REPLY REFER TO:

Board of Land and
Natural Resources
State of Hawai'i
Honolulu, Hawai'i

ISSUANCE OF A REVOCABLE PERMIT FOR OFFICE SPACES IN THE
TERMINAL TO PERFORM SECURITY SERVICES OPERATIONS
UNIVERSAL PROTECTION SERVICE, LP
DBA ALLIED UNIVERSAL SECURITY SERVICES
KAHULUI AIRPORT
TAX MAP KEYS: (2) 3-8-1: PORTION OF 019 AND (2) 3-8-1: PORTION OF 246 MAUI

LEGAL REFERENCE:

Section 171-55, Hawai'i Revised Statutes.

APPLICANT:

Universal Protection Service, LP dba Allied Universal Security Services (ALLIED),
whose mailing address is 1003 Bishop Street, Suite 138, Honolulu, Hawai'i 96813.

LOCATION AND TAX MAP KEY:

Portions of Kahului Airport (OGG), Kahului, Island of Maui, identified by
Tax Map Keys: 2nd Division, 3-8-1: Portion of 019 and 3-8-1: Portion of 246.

AREA:

Bldg/Room No. 330-108, containing an area of approximately 136 square feet,
Bldg/Room No. 330-109, containing an area of approximately 79 square feet,
Bldg/Room No. 330-110, containing an area of approximately 264 square feet,
Bldg/Room No. 330-111, containing an area of approximately 89 square feet,
Bldg/Room No. 330-113, containing an area of approximately 61 square feet,
Bldg/Room No. 330-114, containing an area of approximately 64 square feet,
Bldg/Room No. 330-115, containing an area of approximately 275 square feet,
Bldg/Room No. 117-112, containing an area of approximately 121 square feet,
Bldg/Room No. 117-115, containing an area of approximately 48 square feet, and
Bldg/Room No. 117-116, containing an area of approximately 284 square feet,
as shown and delineated on the attached Exhibits "A" and "B".

ITEM M-5

BLNR – ISSUANCE OF A REVOCABLE PERMIT FOR OFFICE SPACES IN THE
TERMINAL TO PERFORM SECURITY SERVICES OPERATIONS, UNIVERSAL
PROTECTION SERVICE, LP DBA ALLIED UNIVERSAL SECURITY SERVICES
Page 2

ZONING:

State Land Use District:
County of Maui

Urban
Airport

LAND TITLE STATUS:

Section 5(a) lands of the Hawai'i Admission Act: Non-Ceded
DHHL 30% entitlement lands pursuant to Hawai'i Admission Act YES ___ NO X

CURRENT USE STATUS:

Land presently encumbered by Governor's Executive Order No. 2427, dated
February 12, 1969, setting aside 1,268.938 acres designated as Kahului Airport to be
under the control and management of the State of Hawai'i, Department of Transportation
for public purposes.

CHARACTER OF USE:

ALLIED will use the spaces as offices to perform security services as part of Security
Contract DOT-2021-053/Project No. ES1963-21, RFP – Furnishing Security Services at
Hawaii State Airports.

COMMENCEMENT DATE:

Upon complete execution of the revocable permit.

MONTHLY RENTAL:

\$4,888.24 (\$3,765.65, as determined from the DOTA schedule of rates and charges
established by appraisal of Airports property statewide, plus \$355.25 for air conditioning,
\$554.19 for utilities and \$213.15 for maintenance).

SECURITY DEPOSIT:

Three times the monthly rental in effect.

DCCA VERIFICATION:

Place of business registration confirmed:	YES <u>X</u>	NO ___
Registered business name confirmed:	YES <u>X</u>	NO ___
Good standing confirmed:	YES <u>X</u>	NO ___

BLNR – ISSUANCE OF A REVOCABLE PERMIT FOR OFFICE SPACES IN THE
TERMINAL TO PERFORM SECURITY SERVICES OPERATIONS, UNIVERSAL
PROTECTION SERVICE, LP DBA ALLIED UNIVERSAL SECURITY SERVICES

Page 3

CHAPTER 343, HRS - ENVIRONMENTAL ASSESSMENT:

The State of Hawaii, Department of Transportation, Airports Division (HDOT-A), has determined that the subject land area and use is covered by the Kahului Airport Terminal Complex Expansion Negative Declaration, published by the Environmental Quality Commission (EQC) in the September 8, 1981, issue of the EQC Bulletin. Accordingly, all relevant mitigation from the Negative Declaration and best management practices will be implemented to address the minimum impacts of this action.

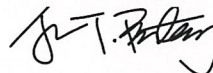
REMARKS:

In accordance with Section 171-55 HRS, relating to Permits, the Department of Transportation proposes to issue a month-to-month revocable permit to ALLIED for offices to perform security service operations, as part of Security Contract DOT-2021-053/Project No. ES1963-21, RFP – Furnishing Security Services at Hawaii State Airports, at Kahului Airport.

RECOMMENDATION:

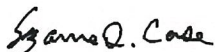
That the Board authorize the Department of Transportation to issue a month-to-month revocable permit to ALLIED, subject to: (1) terms and conditions herein outlined, which are by reference incorporated herein; and (2) such additional terms and conditions as may be prescribed by the Director of Transportation to best serve the interests of the State.

Respectfully submitted,

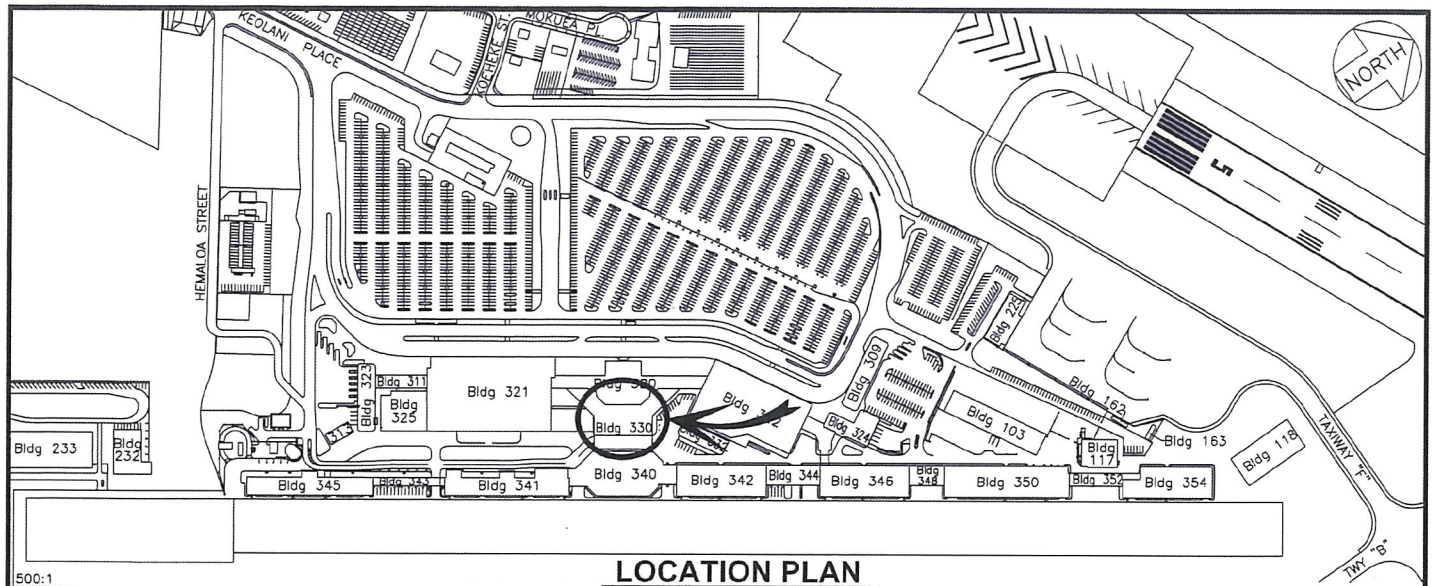


JADE T. BUTAY
Director of Transportation

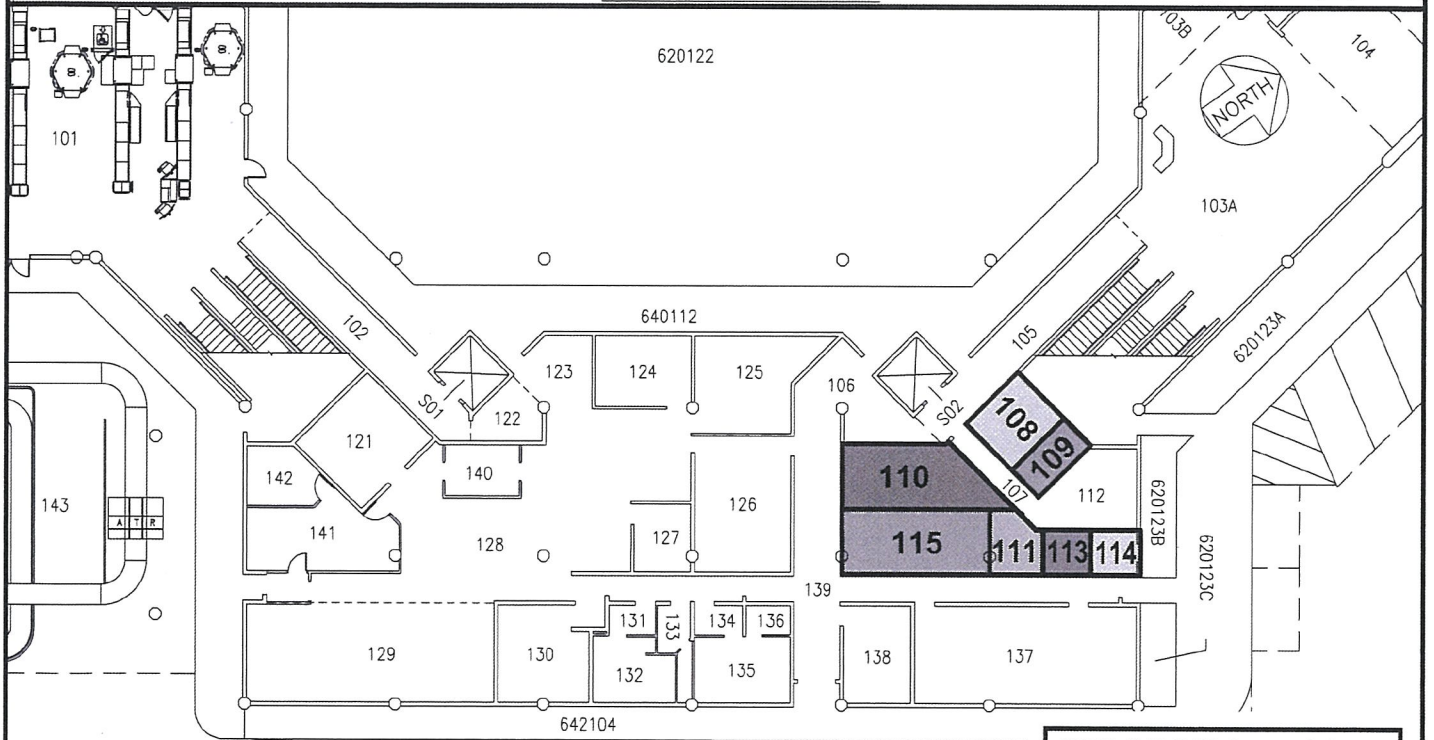
APPROVED FOR SUBMITTAL:



SUZANNE D. CASE
Chairperson and Member



LOCATION PLAN



BLDG 330

Central

SCALE: 1" = 30'

BLDG/ROOM	SQ. FT.
330 108	136
330 109	79
330 110	264
330 111	89
330 113	61
330 114	64
330 115	275

DATE : JUNE 2021

EXHIBIT: A



Airports Division

UNIVERSAL PROTECTION SERVICE, LP
dba ALLIED UNIVERSAL
SECURITY SERVICES

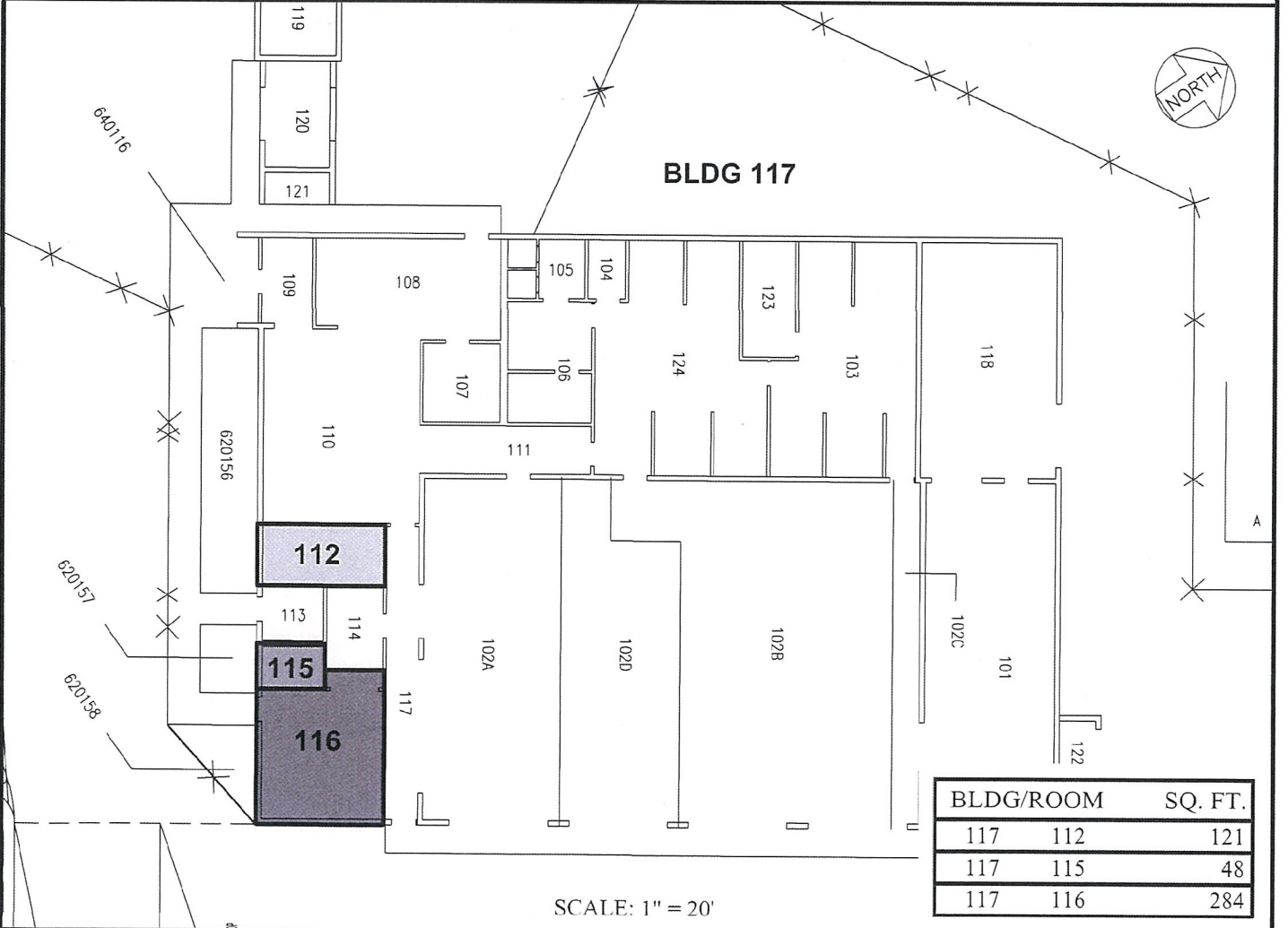
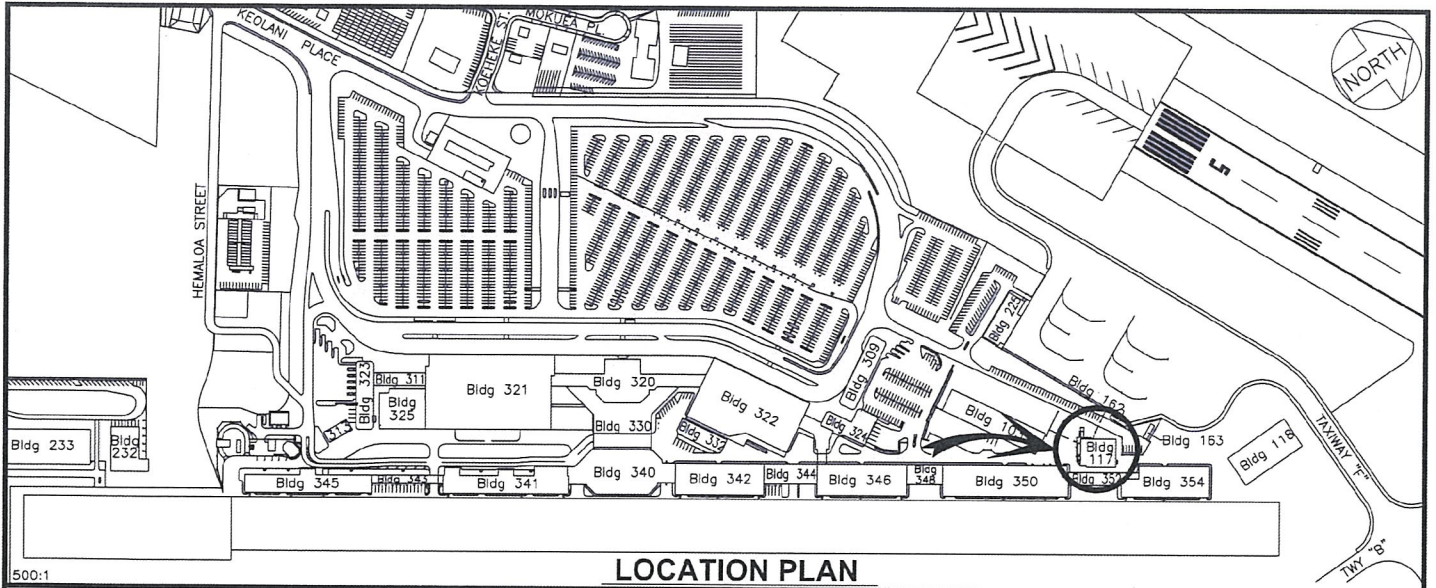
BUILDING 330
CENTRAL BLDG
GROUND LEVEL

330108-111
330113-115

PLAT A1, 35

KAHULUI AIRPORT

N:\AIRPORTS\OGG_Kahului\CAD\PM\ogg_330108-01.dwg



BLDG/ROOM	SQ. FT.
117 112	121
117 115	48
117 116	284

DATE : JUNE 2021

EXHIBIT: **B**



UNIVERSAL PROTECTION SERVICE, LP
dba ALLIED UNIVERSAL
SECURITY SERVICES

BUILDING 117
GROUND LEVEL

117112
117-115, 116
PLAT B1, 36

KAHULUI AIRPORT

N:\AIRPORTS\OGG_Kahului\CAD\PM\ogg_117112-01.dwg