

DAVID Y. IGE  
GOVERNOR



STATE OF HAWAII  
DEPARTMENT OF TRANSPORTATION  
869 PUNCHBOWL STREET  
HONOLULU, HAWAII 96813-5097

JADE T. BUTAY  
DIRECTOR

Deputy Directors  
DEREK J. CHOW  
ROSS M. HIGASHI  
EDWIN H. SNIFFEN

IN REPLY REFER TO:

Board of Land and  
Natural Resources  
State of Hawai'i  
Honolulu, Hawai'i

ISSUANCE OF A REVOCABLE PERMIT FOR A T-HANGAR FOR  
THE STORAGE AND MAINTENANCE OF AN AIRCRAFT FOR THE  
OPERATION OF A COMMERCIAL FLIGHT SCHOOL  
PACIFIC FLIGHT ACADEMY LLC  
DANIEL K. INOUE INTERNATIONAL AIRPORT  
TAX MAP KEY: (1) 1-1-76: PORTION OF 21

O'AHU

REQUEST:

Issuance of a revocable permit for a T-Hangar for storage and maintenance of an aircraft for the operation of a commercial flight school to Pacific Flight Academy LLC, situated at Daniel K. Inouye International Airport.

LEGAL REFERENCE:

Section 171-55, Hawai'i Revised Statutes (HRS).

APPLICANT:

Pacific Flight Academy LLC, whose mailing address is 452 Ilimano Street, Kailua, Hawai'i 96734.

LOCATION AND TAX MAP KEY:

A portion of Daniel K. Inouye International Airport, Island of Oahu, State of Hawai'i, identified by Tax Map Key: 1<sup>st</sup> Division, 1-1-76: portion of 21.

AREA:

Small Plane Hangar Unit No. 421-113, containing an area of approximately 1,247 square feet, as shown and delineated on the attached map labeled Exhibit "A".

**ITEM M-2**

BLNR – ISSUANCE OF A REVOCABLE PERMIT FOR A T-HANGAR FOR THE STORAGE AND MAINTENANCE OF AN AIRCRAFT FOR THE OPERATION OF A COMMERCIAL FLIGHT SCHOOL, PACIFIC FLIGHT ACADEMY LLC

Page 2

ZONING:

State Land Use District: Urban  
City and County of Honolulu LUO: Industrial (I-2)

LAND TITLE STATUS:

Non-Ceded - Section 5(a) lands of the Hawai'i Admission Act  
DHHL 30% entitlement lands pursuant to Hawai'i Admission Act YES \_\_\_ NO X

CURRENT USE STATUS:

Land presently encumbered by Governor's Executive Order No. 3201, dated June 8, 1983, setting aside 3,152.177 acres designated as Daniel K. Inouye International Airport under the control and management of the State of Hawai'i, Department of Transportation, Airports Division (DOTA) for Airport Purposes.

CHARACTER OF USE:

T-Hangar for storage and maintenance of aircraft (2021 Vashon Ranger R7, Tail No. N-332VR).

COMMENCEMENT DATE:

To be determined by the Director of Transportation at a later date.

MONTHLY RENTAL:

\$1,551.40 (\$1,496.40, as determined from the DOTA schedule of rates and charges, commercial rate for T-Hangar, established by appraisal of Airports property statewide plus \$55.00 for electricity).

SECURITY DEPOSIT:

\$4,654.20 or three (3) times the monthly rental in effect.

CHAPTER 343, HRS - ENVIRONMENTAL ASSESSMENT:

The environmental impacts of the proposed action to the subject land area is covered by the Honolulu International Airport Master Plan Update and Noise Compatibility Program Environmental Assessment (EA), State Project No. AO1011-033. The EA is a joint State and Federal document, dated September 1989 and published in the October 23, 1989

BLNR – ISSUANCE OF A REVOCABLE PERMIT FOR A T-HANGAR FOR THE STORAGE AND MAINTENANCE OF AN AIRCRAFT FOR THE OPERATION OF A COMMERCIAL FLIGHT SCHOOL, PACIFIC FLIGHT ACADEMY LLC

Page 3

issue of the OEQC Bulletin. Accordingly, relevant mitigation from the EA and DOT-A environmental best management practice will address minimal impacts from this action.

REMARKS:

The issuance of a revocable permit to Pacific Flight Academy LLC for a T-Hangar for storage and maintenance of aircraft for a commercial flight school at Daniel K. Inouye International Airport complies with Chapter 343, Hawai'i Revised Statutes, as amended, relating to Environmental Impact Statements, and is in accordance with Section 171-55, HRS, relating to Permits.

RECOMMENDATION:

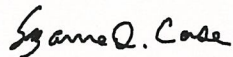
That the Board authorize the Department of Transportation to issue a month-to-month revocable permit to Pacific Flight Academy LLC, subject to: (1) terms and conditions herein outlined, which are by reference incorporated herein; and (2) such additional terms and conditions as may be prescribed by the Director of Transportation to best serve the interests of the State.

Respectfully submitted,



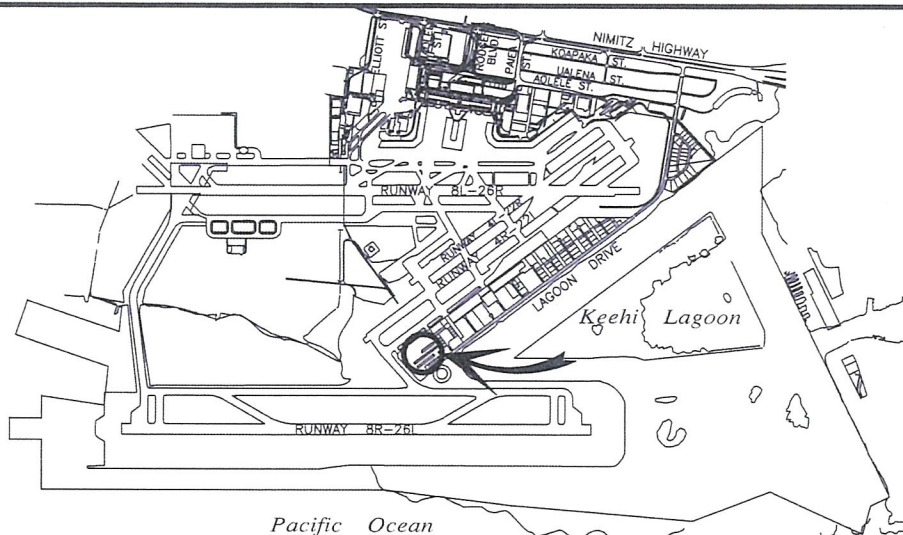
JADE T. BUTAY  
Director of Transportation

APPROVED FOR SUBMITTAL:



SUZANNE D. CASE  
Chairperson and Member

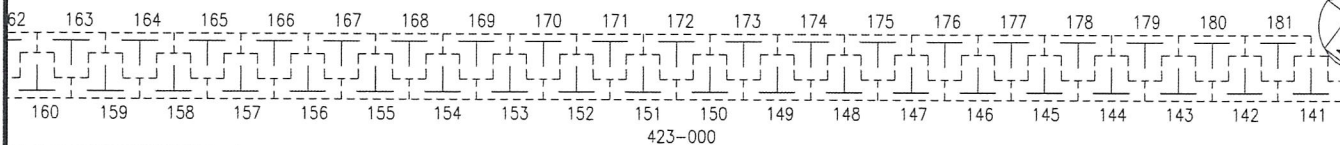




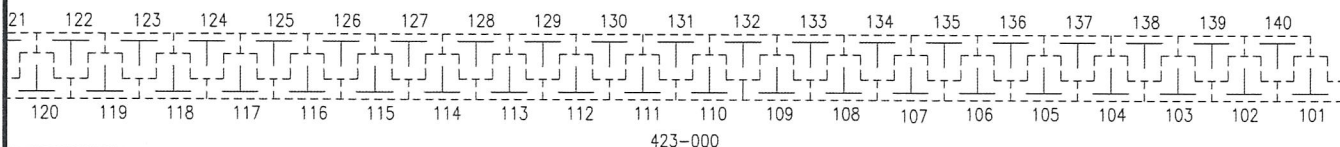
**LOCATION PLAN**

5000:1

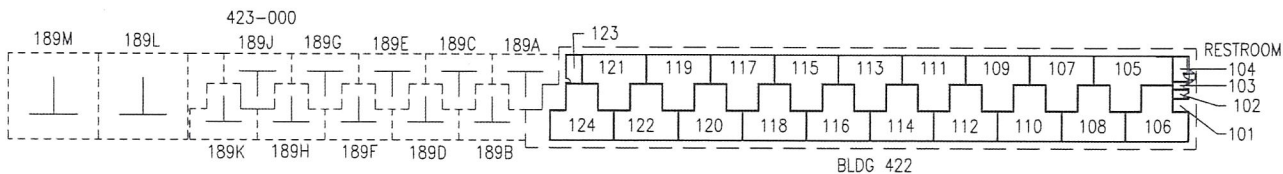
423-000



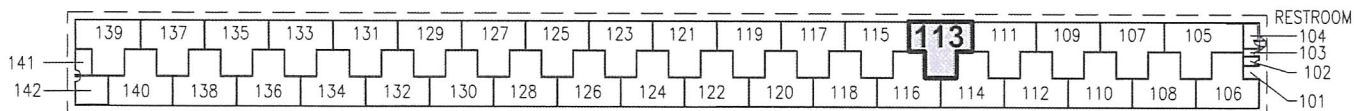
423-000



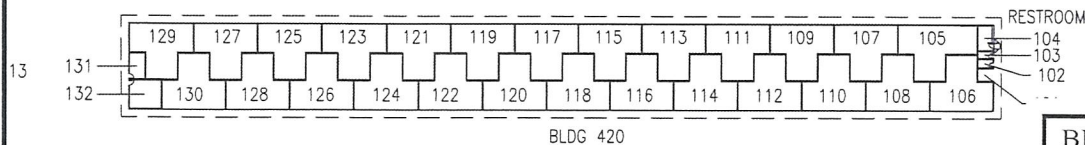
423-000



BLDG 422



**BLDG 421**



BLDG 420

BLDG/ROOM	SQ. FT.
421 113	1,247

011101C 54311 SCALE: 1" = 120"

RP-9147

DATE : AUGUST 2021

EXHIBIT: **A**



Airports Division

PACIFIC FLIGHT ACADEMY, LLC

BUILDING 421  
T-HANGAR  
GROUND LEVEL

421113

PLAT 45

**DANIEL K. INOUE INTERNATIONAL AIRPORT**

N:\AIRPORTS\HNL\_HONOLULU\CAD\PM\HNL\_421113-01.DWG