



**STATE OF HAWAII**  
**DEPARTMENT OF TRANSPORTATION**  
869 PUNCHBOWL STREET  
HONOLULU, HAWAII 96813-5097

Board of Land and Natural Resources  
State of Hawaii  
Honolulu, Hawaii

**OAHU**

ISSUANCE OF MONTH-TO-MONTH REVOCABLE PERMIT TO PACIFIC FISHING & SUPPLY, INC., FOR THE PURPOSE OF SELLING FISHING SUPPLIES, GEAR, AND EQUIPMENT TO MARITIME-RELATED COMPANIES AND COMMERCIAL FISHING VESSELS, SITUATED AT PIER 31, HONOLULU HARBOR, ISLAND OF OAHU, TAX MAP KEY NO. (1) 1-5-035:012 (P), GOVERNOR'S EXECUTIVE ORDER NO. 4167

**LEGAL REFERENCE:**

Sections 171-6, 171-13, 171-17, 171-55, and 171-59, Hawaii Revised Statutes, as amended.

**APPLICANT:**

Pacific Fishing & Supply, Inc., is a domestic for-profit corporation whose business registration address and mailing address is 504 N. Nimitz Highway, Honolulu, Hawaii 96817.

**CHARACTER OF USE:**

Applicant's proposed use is to sell fishing supplies, gear, and equipment to maritime-related companies and commercial fishing vessels with operations.

**LOCATION:**

Portions of governmental lands at Honolulu Harbor, island of Oahu, Tax Map Key No. (1) 1-5-035:012 (P), Governor's Executive Order No. 4167, as shown on the attached map labeled Exhibit A.

**AREA: See attached Exhibit A**

AREA	DESCRIPTION	TYPE	SQ. FT.	RATE PER SQ. FT.	MONTHLY RENTAL CHARGE	SECURITY DEPOSIT
1	Ground Level Office Space	Industrial Office Space	1,100	\$ 1.30	\$ 1,430.00	\$ 2,860.00
2	Mezzanine Office Space	Industrial Office Space	1,100	\$ 1.30	\$ 1,430.00	\$ 2,860.00
3	Warehouse Space	Industrial Warehouse	10,484	\$ 1.40	\$ 14,677.60	\$ 29,355.20
					<b>\$ 17,537.60</b>	<b>\$ 35,075.20</b>
					Total Monthly Rental	Total Security Deposit

**CONSIDERATION:**

Determined by appraisal as of January 1, 2021, for Revocable Permits in Honolulu Harbor, Island of Oahu.

**ZONING:**

State Land Use Commission: Urban  
 City and County of Honolulu: I-3 (Waterfront Industrial District)

**COMMENCEMENT DATE:**

To be determined by the Director of Transportation

**TRUST LAND STATUS:**

Land acquired after statehood (non-ceded lands).

**CURRENT USE STATUS:**

The area is currently vacant.

**LAND TITLE STATUS:**

Acquired by the Department of Transportation, Harbors Division (“DOT Harbors”), through eminent domain proceedings by issuance of Governor’s Executive Order No. 4167.

**CHAPTER 343 - ENVIRONMENTAL ASSESSMENT:**

This action is exempt from Office of Environmental Quality Control (“OEQC”) requirements pursuant to Sub-Chapter 11-200.1, Hawaii Administrative Rules, which exempts the following:

Exemption Class 1: “Operations, repairs or maintenance of existing structures, facilities, equipment or topographical features, involving minor expansion or minor change of use beyond that previously existing.”

The DOT Harbors will submit its publication request of this Exemption Notice to the OEQC for publication on the 8<sup>th</sup> of each month.

**REMARKS:**

The Applicant has been providing service, maintenance, and sales of commercial fishing equipment since 1989. The Applicant provides this service for maritime-related companies and vessels docked at Piers 16-18, and Piers 36-38, Honolulu Harbor. The Applicant has extensive knowledge of the industry and has collectively managed through its principals, approximately twenty (20) fishing vessels operating out of Honolulu Harbor.

**RECOMMENDATION:**

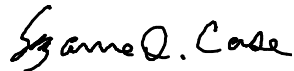
That the Board authorize the DOT Harbors to issue the Applicant a month-to-month revocable permit for the above-stated purposes, subject to the terms and conditions outlined above and incorporated herein by reference, and such terms and conditions as may be prescribed by the Director of Transportation to best serve the interests of the State.

Respectfully submitted,



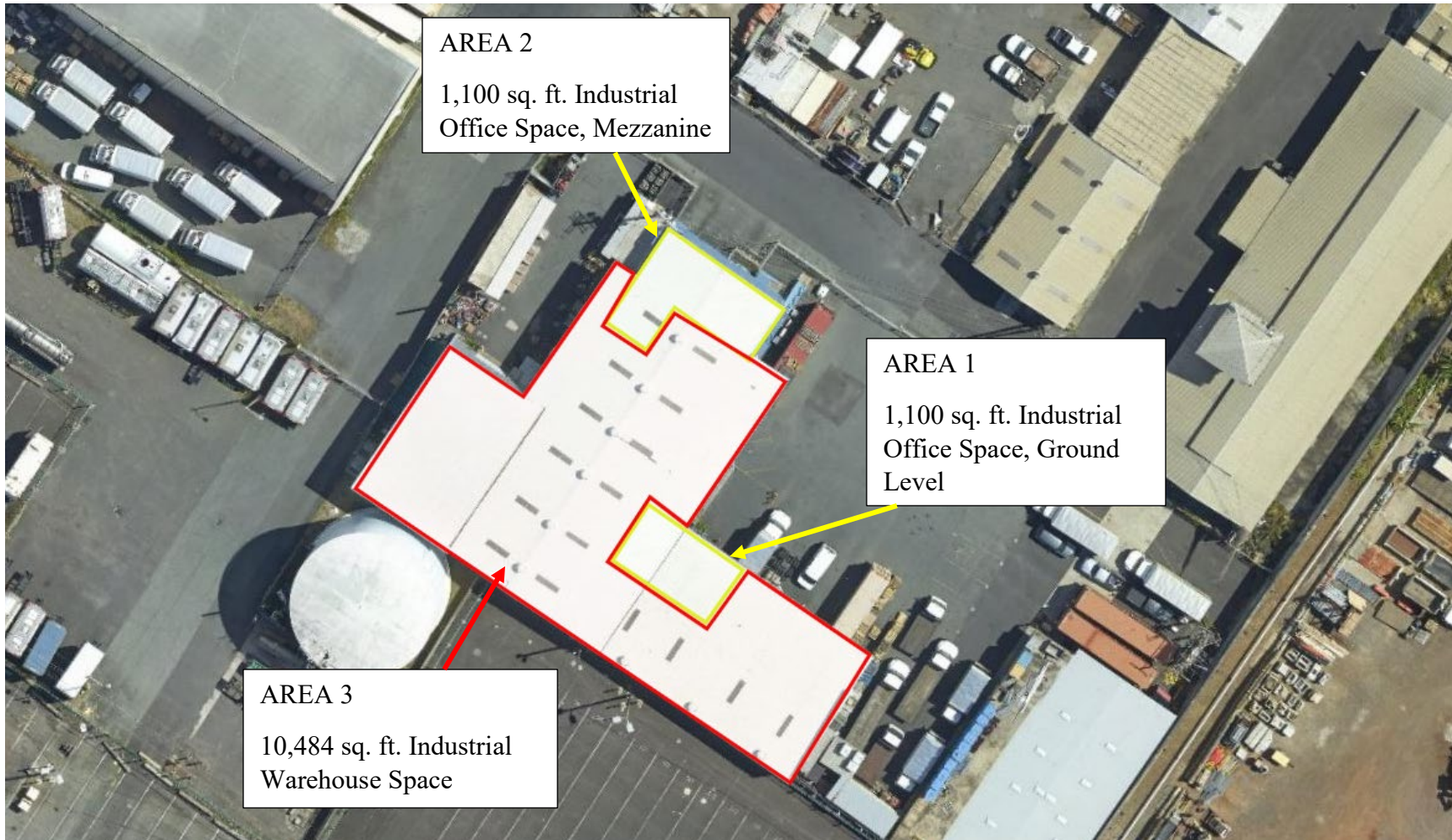
JADE T. BUTAY  
Director of Transportation

APPROVED FOR SUBMITTAL:



SUZANNE D. CASE  
Chairperson and Member  
Board of Land and Natural Resources

Att.: Exhibit A



AREA	DESCRIPTION	TYPE	SQ. FT.
1	Ground Level Office Space	Industrial Office Space	1,100
2	Mezzanine Office Space	Industrial Office Space	1,100
3	Warehouse Space	Industrial Warehouse Space	10,484