

DAVID Y. IGE
GOVERNOR



JADE T. BUTAY
DIRECTOR

Deputy Directors
DEREK J. CHOW
ROSS M. HIGASHI
EDWIN H. SNIFFEN

IN REPLY REFER TO:

STATE OF HAWAII
DEPARTMENT OF TRANSPORTATION
869 PUNCHBOWL STREET
HONOLULU, HAWAII 96813-5097

Board of Land and
Natural Resources
State of Hawai'i
Honolulu, Hawai'i

ISSUANCE OF A REVOCABLE PERMIT FOR AIRCRAFT PARKING
BARBERS POINT AVIATION SERVICES, LLC
KALAELOA AIRPORT
TAX MAP KEY: (1) 9-1-13: PORTION OF 32

O'AHU

REQUEST:

Issuance of a Revocable Permit for Aircraft Parking (Parking Permit) to Barbers Point Aviation Services, LLC, situated at Kalaeloa Airport.

LEGAL REFERENCE:

Section 171-55, Hawai'i Revised Statutes (HRS).

APPLICANT:

Barbers Point Aviation Services, LLC, whose mailing address is 91-1259 Midway Road, Bldg. 104, Suite #1, Kapolei, Hawai'i 96707.

LOCATION AND TAX MAP KEY:

A portion of Kalaeloa Airport, Kapolei, Island of O'ahu, State of Hawai'i, identified by Tax Map Key: 1st Division, 9-1-13: portion of 32.

AREA:

Area/Space No. 405-129, containing an area of approximately 849 square feet each, as shown and delineated on the attached map labeled Exhibit "A".

ZONING:

State Land Use District: Urban
City and County of Honolulu LUO: P-2 (To be rezoned in the future)

ITEM M-1

BLNR – ISSUANCE OF A REVOCABLE PERMIT FOR AIRCRAFT PARKING, BARBERS
POINT AVIATION SERVICES, LLC

Page 2

LAND TITLE STATUS:

Non-ceded - Section 5(a) lands of the Hawai'i Admission Act
DHHL 30% entitlement lands pursuant to Hawai'i Admission Act YES ___ NO X

CURRENT USE STATUS:

Land presently encumbered by Governor's Executive Order No. 3861, setting aside
Kalaeloa Airport under the control and management of the Department of Transportation,
Airports Division (DOTA), State of Hawai'i, for Airport Purposes.

CHARACTER OF USE:

Aircraft tie-down (1984 Beechcraft 300, Tail No. N-262SP).

COMMENCEMENT DATE:

To be determined by the Director of Transportation at a later date.

MONTHLY RENTAL:

\$54.00 (as determined from the DOTA schedule of rates and charges established by
appraisal of Airports property statewide).

SECURITY DEPOSIT:

\$162.00, or three (3) times the monthly rental in effect.

CHAPTER 343, HRS - ENVIRONMENTAL ASSESSMENT:

The subject land area is covered by the Final Environmental Assessment for the Kalaeloa
Airfield Development Plan Improvements, State Project No. AO5011-02 dated June 2010.
This Environmental Assessment was prepared by Wilson Okamoto Corp. for the State of
Hawai'i, Department of Transportation, Airports Division, in part to evaluate the
environmental effects of the recommended Kalaeloa Airfield Master Plan to meet existing
and forecast general aviation demands.

REMARKS:

The issuance of a Parking Permit to Barbers Point Aviation Services, LLC, for aircraft
parking at Kalaeloa Airport complies with Chapter 343, Exemption Class 1.D.10 as a
continuing aeronautical use, and is in accordance with Section 171-55 HRS, relating to
Permits.

RECOMMENDATION:

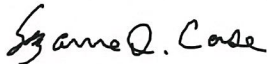
That the Board authorize the Department of Transportation to issue a month-to-month Parking Permit to Barbers Point Aviation Services, LLC, subject to: (1) terms and conditions herein outlined, which are by reference incorporated herein; and (2) such additional terms and conditions as may be prescribed by the Director of Transportation to best serve the interests of the State.

Respectfully submitted,

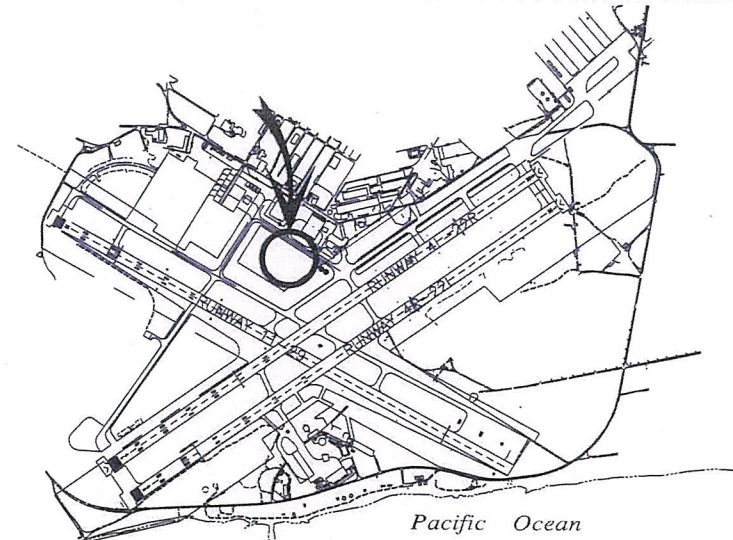


JADE T. BUTAY
Director of Transportation

APPROVED FOR SUBMITTAL:



SUZANNE D. CASE
Chairperson and Member



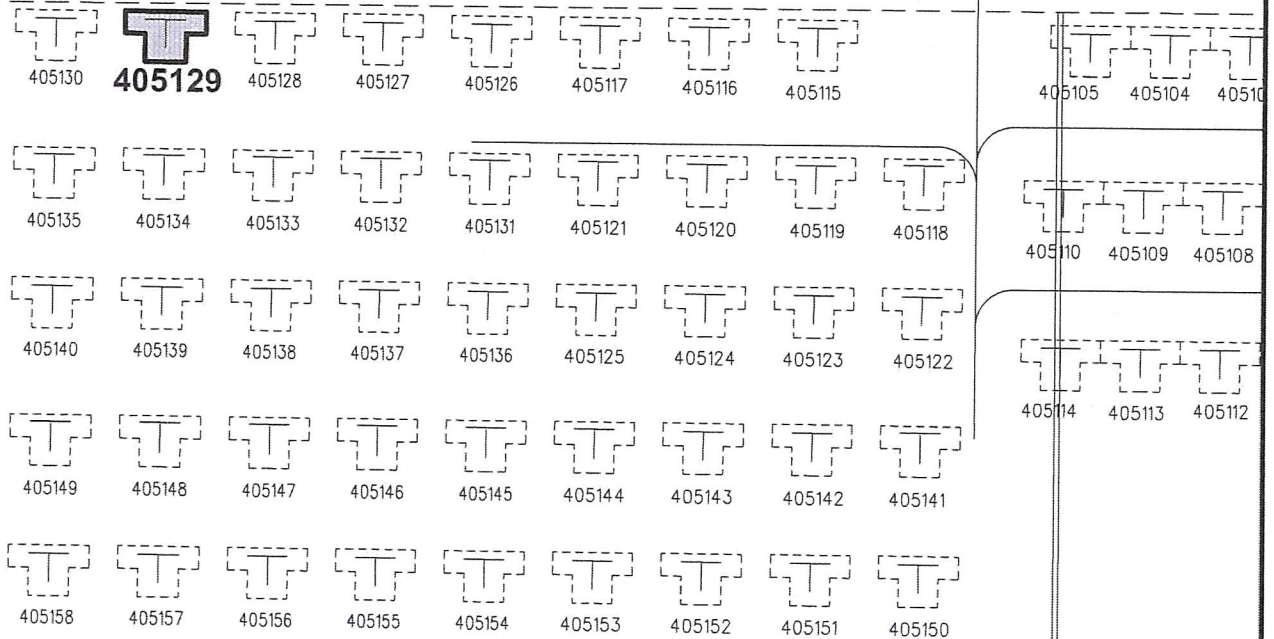
3000:1

LOCATION PLAN



TAXIRROUTE 'B4'

PAVEMENT



500101

SCALE: 1" = 100'

AREA/SPACE	SQ. FT.
405 129	849

PP-21-0016

DATE : OCTOBER 2021

EXHIBIT: **A**



Airports Division

BARBERS POINT AVIATION SERVICES, LLC

TIE-DOWN

405129

PLAT B1

KALAELOA AIRPORT

N:\AIRPORTS\JRF_Kalaeloa\CAD\PM\jrf_405129-01.dwg