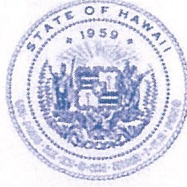


DAVID Y. IGE  
GOVERNOR



JADE T. BUTAY  
DIRECTOR

Deputy Directors  
DEREK J. CHOW  
ROSS M. HIGASHI  
EDWIN H. SNIFFEN

IN REPLY REFER TO:

**STATE OF HAWAII**  
**DEPARTMENT OF TRANSPORTATION**  
869 PUNCHBOWL STREET  
HONOLULU, HAWAII 96813-5097

Board of Land and  
Natural Resources  
State of Hawai'i  
Honolulu, Hawai'i

ISSUANCE OF A REVOCABLE PERMIT FOR TWO AIRCRAFT PARKING  
BARBERS POINT FLIGHT SCHOOL, LLC  
KALAELOA AIRPORT  
TAX MAP KEY: (1) 9-1-13: PORTION OF 32

O'AHU

REQUEST:

Issuance of a Revocable Permit for Two Aircraft Parking (Parking Permit) to Barbers Point Flight School, LLC, situated at Kalaeloa Airport.

LEGAL REFERENCE:

Section 171-55, Hawai'i Revised Statutes (HRS).

APPLICANT:

Barbers Point Flight School, LLC, whose mailing address is 91-1259 Midway Road, Bldg. 104, Suite 1, Kapolei, Hawai'i 96707.

LOCATION AND TAX MAP KEY:

A portion of Kalaeloa Airport, Kapolei, Island of O'ahu, State of Hawai'i, identified by Tax Map Key: 1<sup>st</sup> Division, 9-1-13: portion of 32.

AREA:

Area/Space Nos. 405-102 and 405-108, containing an area of approximately 849 square feet each, as shown and delineated on the attached map labeled Exhibit "A".

ZONING:

State Land Use District: Urban  
City and County of Honolulu LUO: P-2 (To be rezoned in the future)

**ITEM M-2**

LAND TITLE STATUS:

Non-ceded - Section 5(a) lands of the Hawai'i Admission Act  
DHHL 30% entitlement lands pursuant to Hawai'i Admission Act YES \_\_\_ NO X

CURRENT USE STATUS:

Land presently encumbered by Governor's Executive Order No. 3861, setting aside Kalaeloa Airport under the control and management of the Department of Transportation, Airports Division (DOTA), State of Hawai'i, for Airport Purposes.

CHARACTER OF USE:

Two aircraft tie-downs (1999 Cessna 172S, Tail No. N-243SP and 2020 Textron Aviation 172S, Tail No. N-808PE).

COMMENCEMENT DATE:

To be determined by the Director of Transportation at a later date.

MONTHLY RENTAL:

\$108.00 (as determined from the DOTA schedule of rates and charges established by appraisal of Airports property statewide).

SECURITY DEPOSIT:

\$324.00, or three (3) times the monthly rental in effect.

CHAPTER 343, HRS - ENVIRONMENTAL ASSESSMENT:

The subject land area is covered by the Final Environmental Assessment for the Kalaeloa Airfield Development Plan Improvements, State Project No. AO5011-02 dated June 2010. This Environmental Assessment was prepared by Wilson Okamoto Corp. for the State of Hawai'i, Department of Transportation, Airports Division, in part to evaluate the environmental effects of the recommended Kalaeloa Airfield Master Plan to meet existing and forecast general aviation demands.

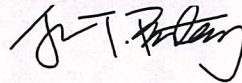
REMARKS:

The issuance of a Parking Permit to Barbers Point Flight School, LLC, for two aircraft parking at Kalaeloa Airport complies with Chapter 343, Exemption Class 1.D.10 as a continuing aeronautical use, and is in accordance with Section 171-55 HRS, relating to Permits.

RECOMMENDATION:

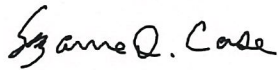
That the Board authorize the Department of Transportation to issue a month-to-month Parking Permit to Barbers Point Flight School, LLC, subject to: (1) terms and conditions herein outlined, which are by reference incorporated herein; and (2) such additional terms and conditions as may be prescribed by the Director of Transportation to best serve the interests of the State.

Respectfully submitted,

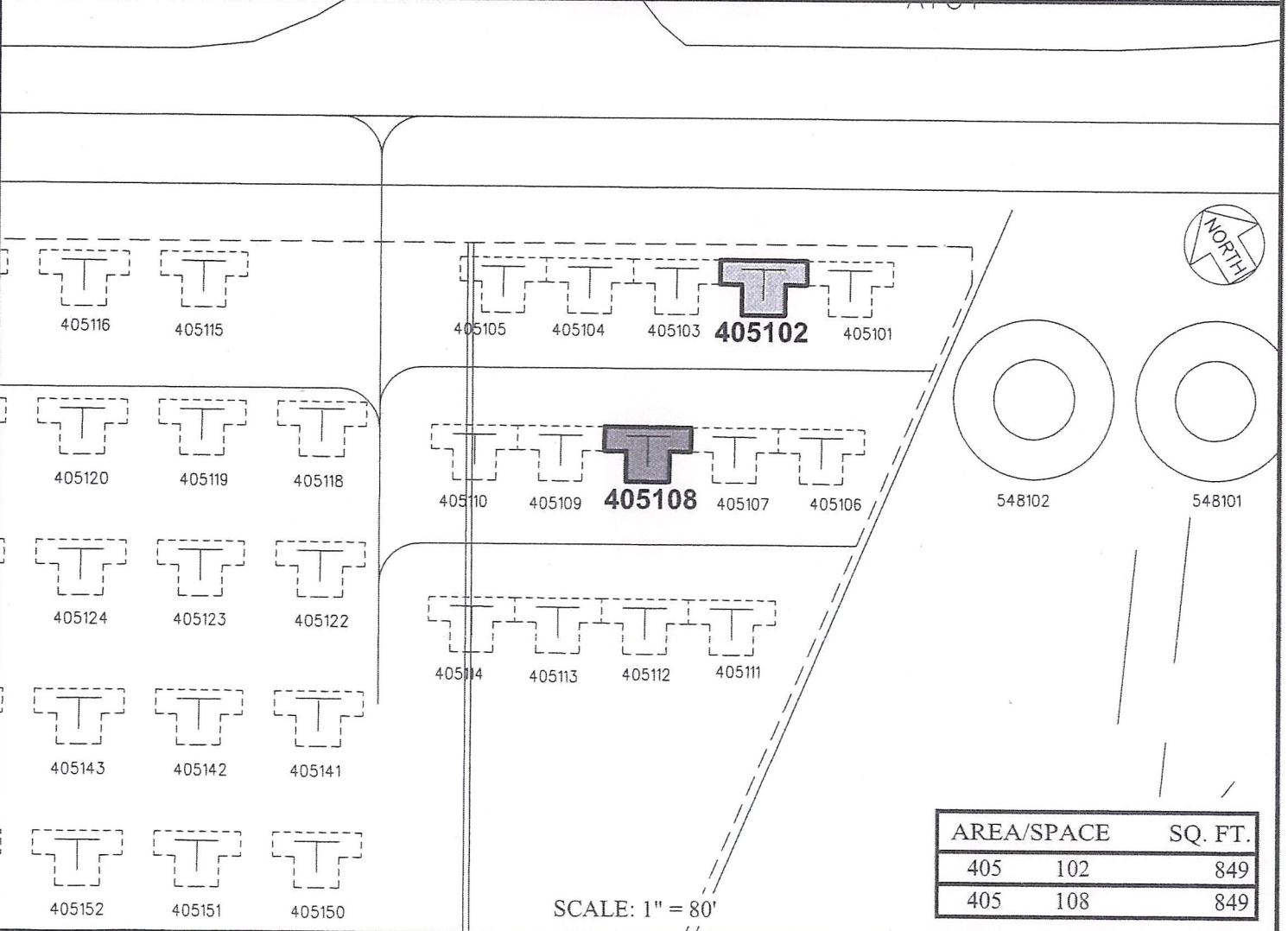
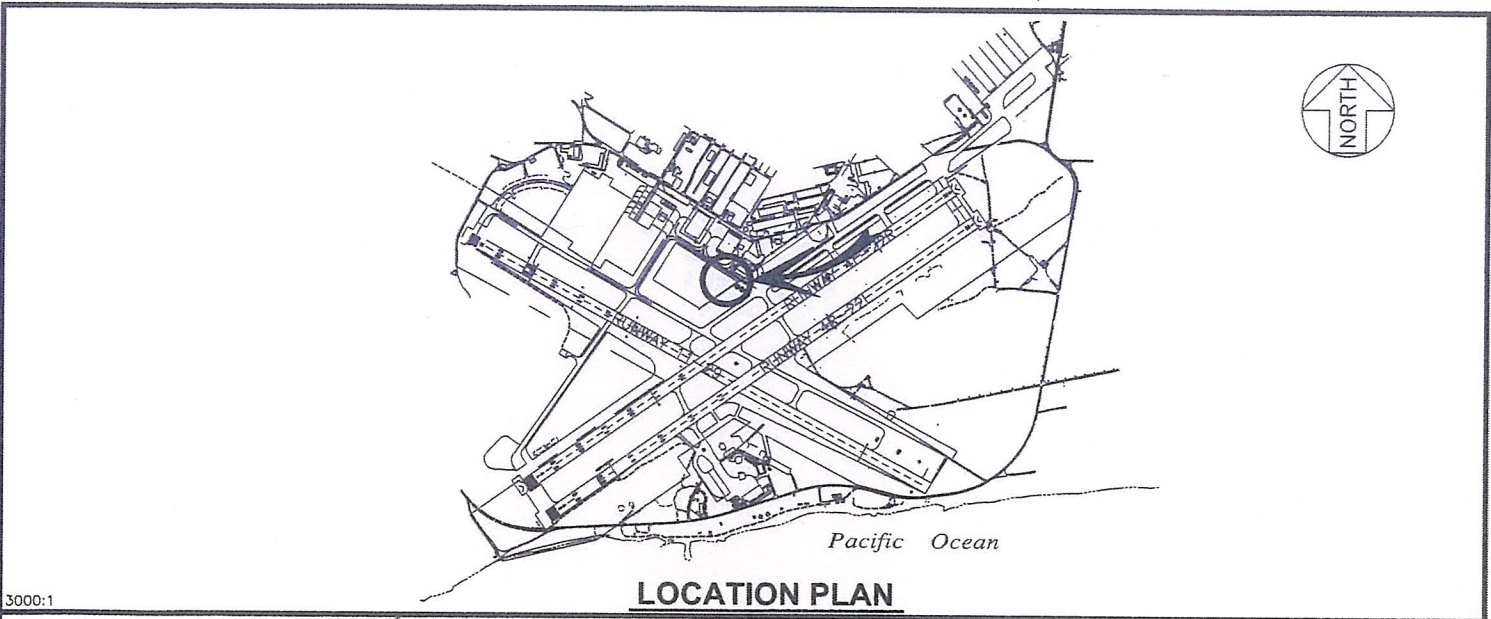


JADE T. BUTAY  
Director of Transportation

APPROVED FOR SUBMITTAL:



SUZANNE D. CASE  
Chairperson and Member



PP-21-0017

DATE : OCTOBER 2021

EXHIBIT: **A**



BARBERS POINT FLIGHT  
SCHOOL, LLC

TIE-DOWN

405102  
405108  
PLAT B1