

DAVID Y. IGE
GOVERNOR



STATE OF HAWAII
DEPARTMENT OF TRANSPORTATION
869 PUNCHBOWL STREET
HONOLULU, HAWAII 96813-5097

JADE T. BUTAY
DIRECTOR

Deputy Directors
DEREK J. CHOW
ROSS M. HIGASHI
EDWIN H. SNIFFEN

IN REPLY REFER TO:

Board of Land and
Natural Resources
State of Hawai'i
Honolulu, Hawai'i

ISSUANCE OF A REVOCABLE PERMIT FOR THREE COMMERCIAL
T-HANGARS FOR THE STORAGE OF PARTS, TOOLS AND EQUIPMENT
TO SUPPORT A COMMERCIAL GENERAL AVIATION MAINTENANCE
BUSINESS
CORPORATE AIR
DANIEL K. INOUE INTERNATIONAL AIRPORT
TAX MAP KEY: (1) 1-1-76: PORTION OF 20

O'AHU

REQUEST:

Issuance of a revocable permit for three commercial T-hangars for the storage of parts, tools and equipment to support a commercial general aviation maintenance business to Corporate Air, situated at Daniel K. Inouye International Airport.

LEGAL REFERENCE:

Section 171-55, Hawai'i Revised Statutes (HRS).

APPLICANT:

Corporate Air, whose mailing address is P. O. Box 81050, Billings, Montana 59106.

LOCATION AND TAX MAP KEY:

A portion of Daniel K. Inouye International Airport, Island of Oahu, State of Hawai'i, identified by Tax Map Key: 1st Division, 1-1-76: portion of 20.

AREA:

Small Plane Hangar Unit Nos. 420-113, 420-115 and 420-117, containing an area of approximately 1,247 square feet each, as shown and delineated on the attached map labeled Exhibit "A".

ITEM M-3

BLNR – ISSUANCE OF A REVOCABLE PERMIT FOR THREE COMMERCIAL
T- HANGARS FOR THE STORAGE OF PARTS, TOOLS AND EQUIPMENT TO SUPPORT
A COMMERCIAL GENERAL AVIATION MAINTENANCE BUSINESS, CORPORATE AIR
Page 2

ZONING:

State Land Use District: Urban
City and County of Honolulu LUO: Industrial (I-2)

LAND TITLE STATUS:

Non-Ceded - Section 5(a) lands of the Hawai'i Admission Act
DHHL 30% entitlement lands pursuant to Hawai'i Admission Act YES ___ NO X

CURRENT USE STATUS:

Land presently encumbered by Governor's Executive Order No. 3201, dated
June 8, 1983, setting aside 3,152.177 acres designated as Daniel K. Inouye International
Airport under the control and management of the State of Hawai'i, Department of
Transportation, Airports Division (DOTA) for Airport Purposes.

CHARACTER OF USE:

Three T-hangars for the storage of parts, tools and equipment to support a commercial
general aviation maintenance business.

COMMENCEMENT DATE:

To be determined by the Director of Transportation at a later date.

MONTHLY RENTAL:

\$4,654.20 (\$4,489.20, as determined from the DOTA schedule of rates and charges,
commercial rate for T-hangar, established by appraisal of Airports property statewide
plus \$165.00 for electricity).

SECURITY DEPOSIT:

\$13,962.60, or three (3) times the monthly rental in effect.

CHAPTER 343, HRS - ENVIRONMENTAL ASSESSMENT:

The environmental impacts of the proposed action to the subject land area are covered by
the Honolulu International Airport Master Plan Update and Noise Compatibility Program
Environmental Assessment (EA), State Project No. AO1011-033. The EA is a joint State
and Federal document, dated September 1989 and published in the October 23, 1989

BLNR – ISSUANCE OF A REVOCABLE PERMIT FOR THREE COMMERCIAL
T- HANGARS FOR THE STORAGE OF PARTS, TOOLS AND EQUIPMENT TO SUPPORT
A COMMERCIAL GENERAL AVIATION MAINTENANCE BUSINESS, CORPORATE AIR
Page 3

issue of the OEQC Bulletin. Accordingly, relevant mitigation from the EA and DOT-A
environmental best management practice will address minimal impacts from this action.

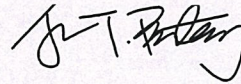
REMARKS:

The issuance of a revocable permit to Corporate Air for three T-hangars for the storage of
parts, tools and equipment to support a commercial general aviation maintenance
business at Daniel K. Inouye International Airport complies with Chapter 343, Hawai'i
Revised Statutes, as amended, relating to Environmental Impact Statements, and is in
accordance with Section 171-55, HRS, relating to Permits.

RECOMMENDATION:

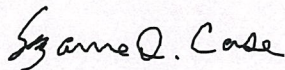
That the Board authorize the Department of Transportation to issue a month-to-month
revocable permit to Corporate Air, subject to: (1) terms and conditions herein outlined,
which are by reference incorporated herein; and (2) such additional terms and conditions
as may be prescribed by the Director of Transportation to best serve the interests of the
State.

Respectfully submitted,

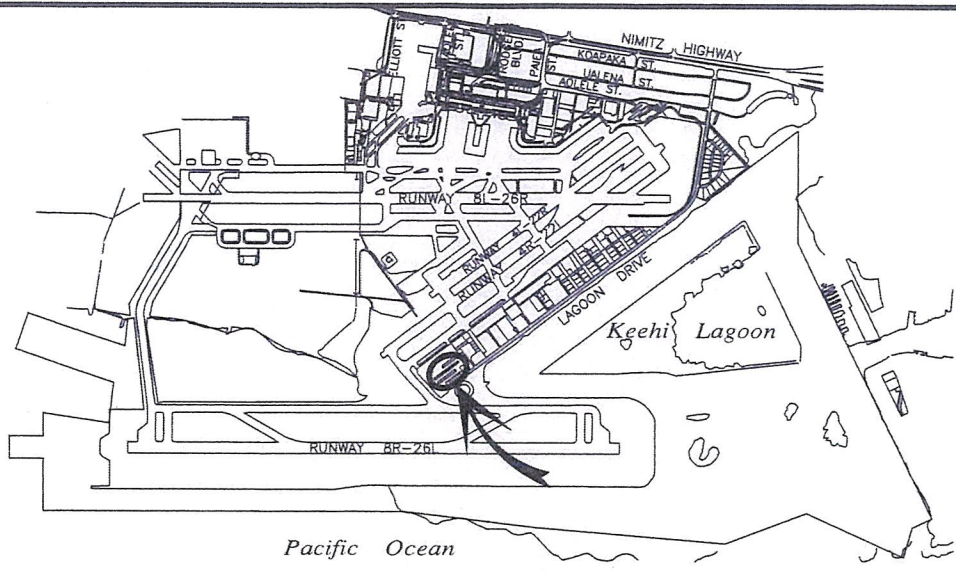


JADE T. BUTAY
Director of Transportation

APPROVED FOR SUBMITTAL:



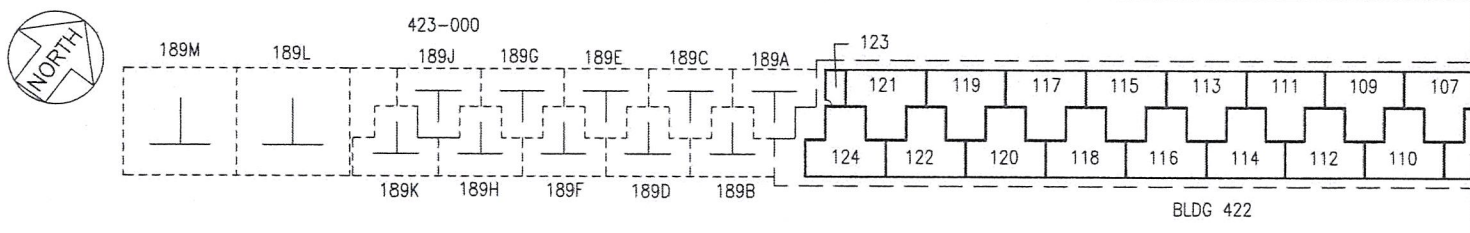
SUZANNE D. CASE
Chairperson and Member



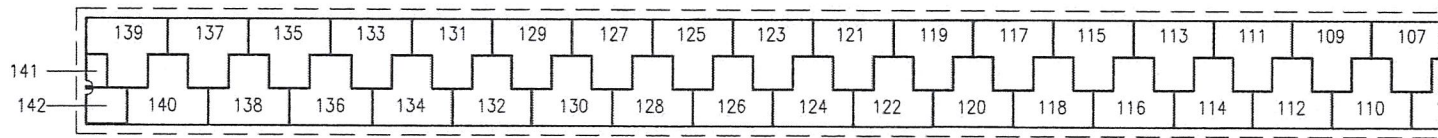
LOCATION PLAN

5000:1

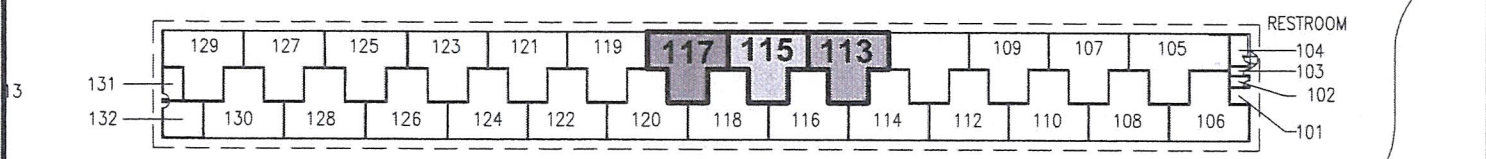
423-000



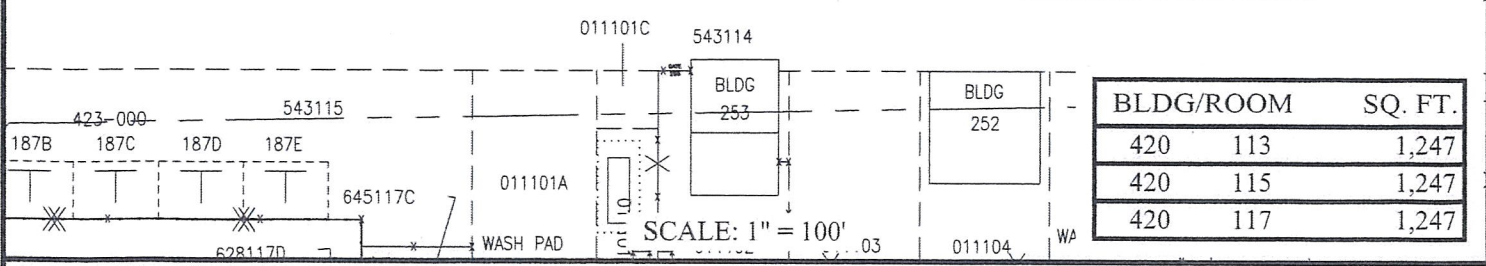
BLDG 422



BLDG 421



BLDG 420



BLDG/ROOM	SQ. FT.
420 113	1,247
420 115	1,247
420 117	1,247

DATE : OCTOBER 2021

EXHIBIT: **A**



CORPORATE AIR

**BUILDING 420
T-HANGAR
GROUND LEVEL**

420113
420115
420117
PLATS 45, 55

DANIEL K. INOUE INTERNATIONAL AIRPORT

N:\AIRPORTS\HNL_HONOLULU\CAD\PM\HNL_420113-02.DWG