

DAVID Y. IGÉ  
GOVERNOR



STATE OF HAWAII  
DEPARTMENT OF TRANSPORTATION  
869 PUNCHBOWL STREET  
HONOLULU, HAWAII 96813-5097

JADE T. BUTAY  
DIRECTOR

Deputy Directors  
DEREK J. CHOW  
ROSS M. HIGASHI  
EDWIN H. SNIFFEN

IN REPLY REFER TO:

Board of Land and  
Natural Resources  
State of Hawai'i  
Honolulu, Hawai'i

ISSUANCE OF A REVOCABLE PERMIT FOR TWO COMMERCIAL  
T-HANGARS FOR THE STORAGE AND MAINTENANCE OF AIRCRAFT  
AND AIRCRAFT PARTS FOR COMMERCIAL GENERAL AVIATION  
MAINTENANCE

HKA PACIFIC LLC

DANIEL K. INOUYE INTERNATIONAL AIRPORT

TAX MAP KEY: (1) 1-1-76: PORTION OF 21

O'AHU

REQUEST:

Issuance of a revocable permit for two commercial T-hangars for storage and maintenance of aircraft and aircraft parts to HKA Pacific LLC, situated at Daniel K. Inouye International Airport.

LEGAL REFERENCE:

Section 171-55, Hawai'i Revised Statutes (HRS).

APPLICANT:

HKA Pacific LLC, whose mailing address is 240 Puuhale Road, Suite 206, Honolulu, Hawai'i 96819.

LOCATION AND TAX MAP KEY:

A portion of Daniel K. Inouye International Airport, Island of Oahu, State of Hawai'i, identified by Tax Map Key: 1<sup>st</sup> Division, 1-1-76: portion of 21.

**ITEM M-4**

BLNR - ISSUANCE OF A REVOCABLE PERMIT FOR TWO COMMERCIAL T-HANGARS FOR THE STORAGE AND MAINTENANCE OF AIRCRAFT AND AIRCRAFT PARTS FOR COMMERCIAL GENERAL AVIATION MAINTENANCE, HKA PACIFIC LLC

Page 2

AREA:

Small Plane Hangar Unit Nos. 421-119 and 421-121, containing an area of approximately 1,247 square feet each, as shown and delineated on the attached map labeled Exhibit "A".

ZONING:

State Land Use District: Urban  
City and County of Honolulu LUO: Industrial (I-2)

LAND TITLE STATUS:

Non-Ceded - Section 5(a) lands of the Hawai'i Admission Act  
DHHL 30% entitlement lands pursuant to Hawai'i Admission Act YES \_\_\_ NO X

CURRENT USE STATUS:

Land presently encumbered by Governor's Executive Order No. 3201, dated June 8, 1983, setting aside 3,152.177 acres designated as Daniel K. Inouye International Airport under the control and management of the State of Hawai'i, Department of Transportation, Airports Division (DOTA) for Airport Purposes.

CHARACTER OF USE:

Two T-hangars for the storage and maintenance of aircraft (1978 Beach Bonanza V35B, Tail No. N-20478 and 1973 Cessna 172M, Tail No. N-12777) and aircraft parts for commercial general aviation maintenance.

COMMENCEMENT DATE:

To be determined by the Director of Transportation at a later date.

MONTHLY RENTAL:

\$3,102.80 (\$2,992.80, as determined from the DOTA schedule of rates and charges, commercial rate for T-hangar, established by appraisal of Airports property statewide plus \$110.00 for electricity).

SECURITY DEPOSIT:

\$9,308.40, or three (3) times the monthly rental in effect.

CHAPTER 343, HRS - ENVIRONMENTAL ASSESSMENT:

The environmental impacts of the proposed action to the subject land area are covered by the Honolulu International Airport Master Plan Update and Noise Compatibility Program Environmental Assessment (EA), State Project No. AO1011-033. The EA is a joint State and Federal document, dated September 1989 and published in the October 23, 1989 issue of the OEQC Bulletin. Accordingly, relevant mitigation from the EA and DOT-A environmental best management practice will address minimal impacts from this action.

REMARKS:

The issuance of a revocable permit to HKA Pacific LLC for two T-hangars for the storage and maintenance of aircraft and aircraft parts used for commercial general aviation maintenance at Daniel K. Inouye International Airport complies with Chapter 343, Hawai'i Revised Statutes, as amended, relating to Environmental Impact Statements, and is in accordance with Section 171-55, HRS, relating to Permits.

RECOMMENDATION:

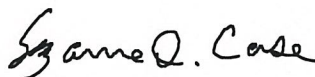
That the Board authorize the Department of Transportation to issue a month-to-month revocable permit to HKA Pacific LLC, subject to: (1) terms and conditions herein outlined, which are by reference incorporated herein; and (2) such additional terms and conditions as may be prescribed by the Director of Transportation to best serve the interests of the State.

Respectfully submitted,

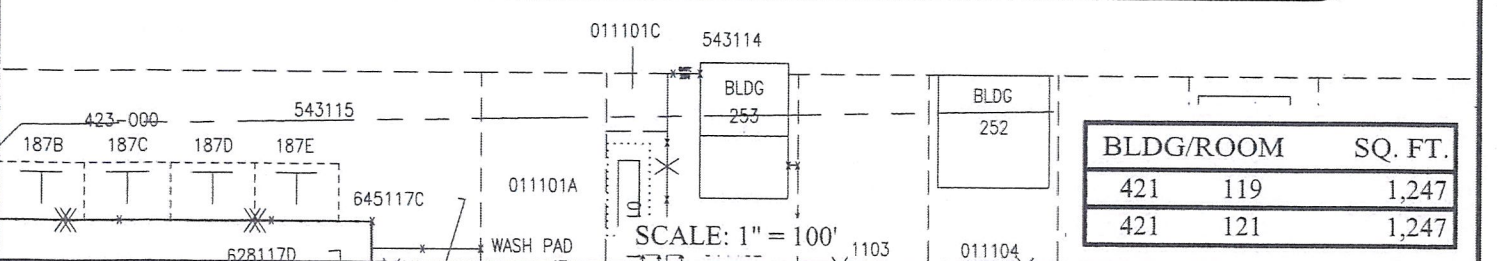
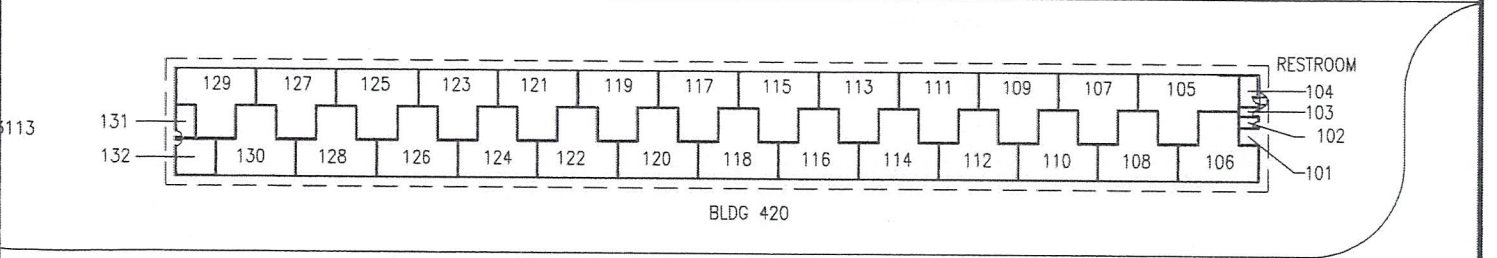
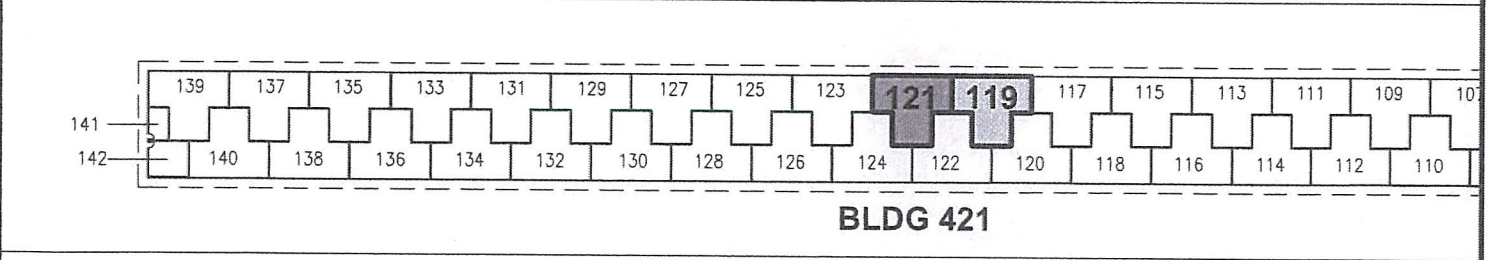
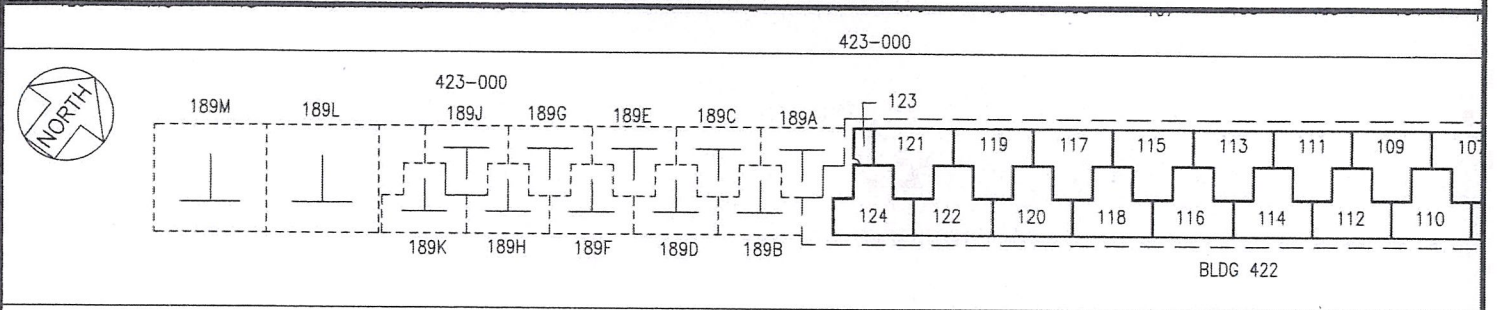
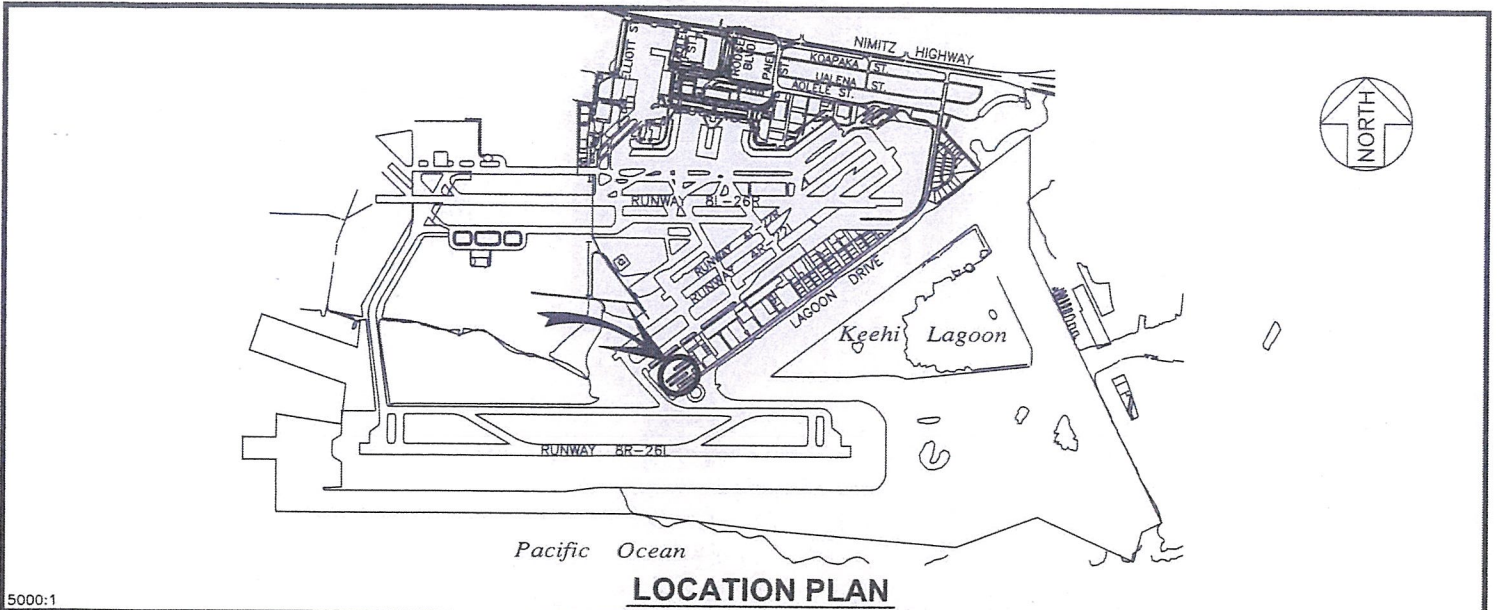


JADE T. BUTAY  
Director of Transportation

APPROVED FOR SUBMITTAL:



SUZANNE D. CASE  
Chairperson and Member



RP-9160	DATE : OCTOBER 2021	EXHIBIT: <b>A</b>
	HKA PACIFIC, LLC	BUILDING 421 T-HANGAR GROUND LEVEL PLAT 45
		421119 421121