

DAVID Y. IGE
GOVERNOR



STATE OF HAWAII
DEPARTMENT OF TRANSPORTATION
869 PUNCHBOWL STREET
HONOLULU, HAWAII 96813-5097
FEBRUARY 25, 2022

JADE T. BUTAY
DIRECTOR

Deputy Directors
ROSS M. HIGASHI
EDUARDO P. MANGLALLAN
PATRICK H. MCCAIN
EDWIN H. SNIFFEN

IN REPLY REFER TO:

Board of Land and
Natural Resources
State of Hawai'i
Honolulu, Hawai'i

ISSUANCE OF A REVOCABLE PERMIT FOR A T-HANGAR FOR THE
STORAGE AND MAINTENANCE OF AN AIRCRAFT IN SUPPORT OF A
COMMERCIAL AERONAUTICAL MAINTENANCE BUSINESS
MID PACIFIC AERO SERVICES LLC
DANIEL K. INOUE INTERNATIONAL AIRPORT
TAX MAP KEY: (1) 1-1-76: PORTION OF 21

O'AHU

REQUEST:

Issuance of a revocable permit for a T-hangar for the storage and maintenance of an aircraft in support of a commercial aeronautical maintenance business to Mid Pacific Aero Services LLC, situated at Daniel K. Inouye International Airport.

LEGAL REFERENCE:

Section 171-55, Hawai'i Revised Statutes (HRS).

APPLICANT:

Mid Pacific Aero Services LLC, whose mailing address is P.O. Box 37564, Honolulu, Hawai'i 96837.

LOCATION AND TAX MAP KEY:

A portion of Daniel K. Inouye International Airport, Island of Oahu, State of Hawai'i, identified by Tax Map Key: 1st Division, 1-1-76: portion of 21.

AREA:

Small Plane Hangar Unit No. 421-125, containing an area of approximately 1,247 square feet, as shown and delineated on the attached map labeled Exhibit "A".

BLNR – ISSUANCE OF A REVOCABLE PERMIT FOR A T-HANGAR FOR THE STORAGE AND MAINTENANCE OF AIRCRAFT IN SUPPORT OF A COMMERCIAL AERONAUTICAL MAINTENANCE BUSINESS, MID PACIFIC AERO SERVICES LLC
Page 2

ZONING:

State Land Use District: Urban
City and County of Honolulu LUO: Industrial (I-2)

LAND TITLE STATUS:

Non-Ceded - Section 5(a) lands of the Hawai'i Admission Act
DHHL 30% entitlement lands pursuant to Hawai'i Admission Act YES ___ NO X

CURRENT USE STATUS:

Land presently encumbered by Governor's Executive Order No. 3201, dated June 8, 1983, setting aside 3,152.177 acres designated as Daniel K. Inouye International Airport under the control and management of the State of Hawai'i, Department of Transportation, Airports Division (DOTA) for Airport Purposes.

CHARACTER OF USE:

T-Hangar for storage and maintenance of an aircraft used in support of a commercial aeronautical maintenance business (1993 MD Helicopter 500N, Tail No. N-513PJ).

COMMENCEMENT DATE:

To be determined by the Director of Transportation at a later date.

MONTHLY RENTAL:

\$1,551.40 (\$1,496.40, as determined from the DOTA schedule of rates and charges, commercial rate for T-hangar, established by appraisal of Airports property statewide plus \$55.00 for electricity).

SECURITY DEPOSIT:

\$4,654.20, or three (3) times the monthly rental in effect.

BLNR – ISSUANCE OF A REVOCABLE PERMIT FOR A T-HANGAR FOR THE STORAGE AND MAINTENANCE OF AIRCRAFT IN SUPPORT OF A COMMERCIAL AERONAUTICAL MAINTENANCE BUSINESS, MID PACIFIC AERO SERVICES LLC
Page 3

CHAPTER 343, HRS - ENVIRONMENTAL ASSESSMENT:

The environmental impacts of the proposed action to the subject land area is covered by the Honolulu International Airport Master Plan Update and Noise Compatibility Program Environmental Assessment (EA), State Project No. AO1011-033. The EA is a joint State and Federal document, dated September 1989 and published in the October 23, 1989 issue of the OEQC Bulletin. Accordingly, relevant mitigation from the EA and DOT-A environmental best management practice will address minimal impacts from this action.

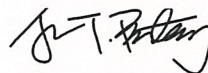
REMARKS:

Issuance of a revocable permit for a T-Hangar for the storage and maintenance of aircraft in support of a commercial aeronautical maintenance business to Mid Pacific Aero Services LLC, situated at Daniel K. Inouye International Airport, complies with Chapter 343, Hawai'i Revised Statutes, as amended, relating to Environmental Impact Statements, and is in accordance with Section 171-55, HRS, relating to Permits.

RECOMMENDATION:

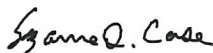
That the Board authorize the Department of Transportation to issue a month-to-month revocable permit to Mid Pacific Aero Services LLC, subject to: (1) terms and conditions herein outlined, which are by reference incorporated herein; and (2) such additional terms and conditions as may be prescribed by the Director of Transportation to best serve the interests of the State.

Respectfully submitted,

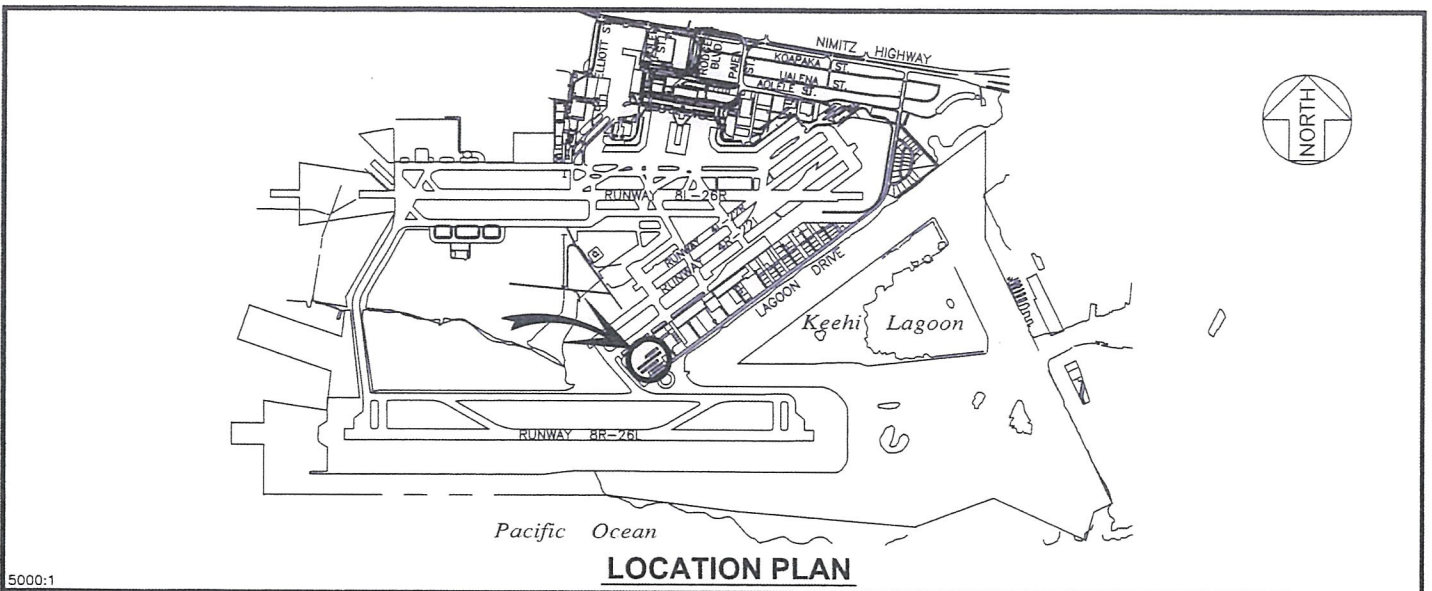


JADE T. BUTAY
Director of Transportation

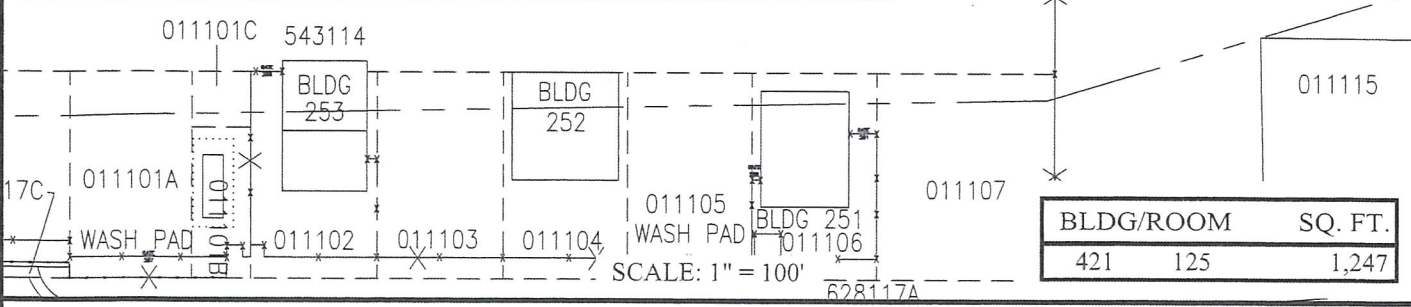
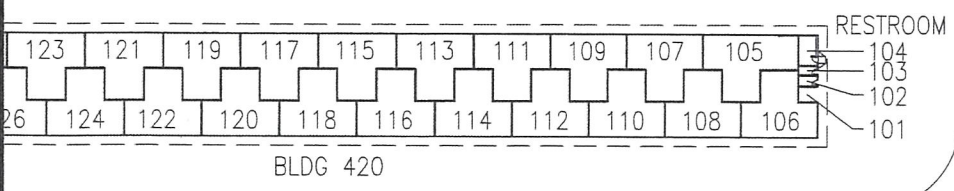
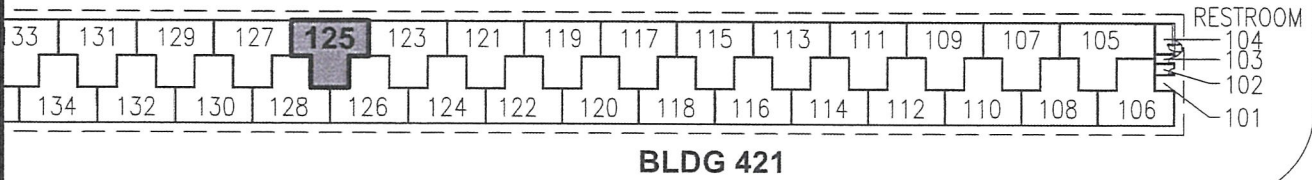
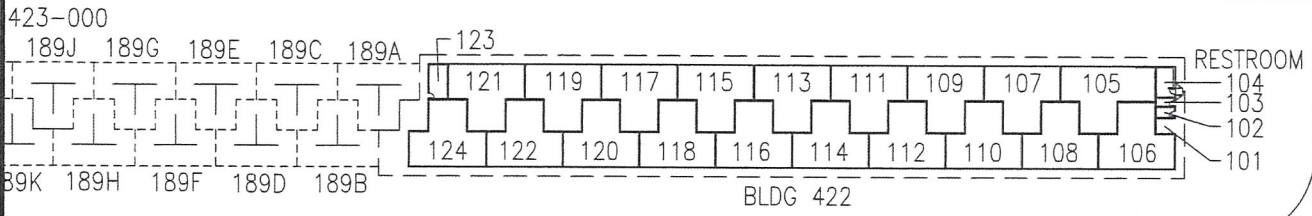
APPROVED FOR SUBMITTAL:



SUZANNE D. CASE
Chairperson and Member



5000:1



RP-9183 DATE : JANUARY 2022 EXHIBIT: A

	MID PACIFIC AERO SERVICES LLC.	T-HANGAR GENERAL AVIATION SOUTH RAMP	421125
			PLAT 45

DANIEL K. INOUE INTERNATIONAL AIRPORT

N:\AIRPORTS\HNL_HONOLULU\CAD\PM\HNL_421125-01.DWG