

DAVID Y. IGE  
GOVERNOR



STATE OF HAWAII  
DEPARTMENT OF TRANSPORTATION  
869 PUNCHBOWL STREET  
HONOLULU, HAWAII 96813-5097  
FEBRUARY 25, 2022

JADE T. BUTAY  
DIRECTOR

Deputy Directors  
ROSS M. HIGASHI  
EDUARDO P. MANGALLAN  
PATRICK H. MCCAIN  
EDWIN H. SNIFFEN

IN REPLY REFER TO:

Board of Land and  
Natural Resources  
State of Hawai'i  
Honolulu, Hawai'i

ISSUANCE OF A REVOCABLE PERMIT FOR COMMERCIAL  
USE OF A T-HANGAR FOR STORAGE OF AIRCRAFT AND A  
MAINTENANCE HANGAR  
HELICOPTER CONSULTANTS OF MAUI, LLC  
HILO INTERNATIONAL AIRPORT  
TAX MAP KEY: (3) 2-1-12: PORTION OF 09

HAWAI'I

LEGAL REFERENCE:

Section 171-55, Hawai'i Revised Statutes (HRS).

APPLICANT:

Helicopter Consultants of Maui, LLC (HCM), whose business address is 106 Kahului Airport, Kahului, Hawai'i 96732.

LOCATION AND TAX MAP KEY:

Portion of Hilo International Airport (ITO), Hilo, Island of Hawai'i, identified by Tax Map Key: 3<sup>rd</sup> Division, 2-1-12: Portion of 09.

AREA:

Building/Room No. 414-110, containing an area of approximately 1,258 square feet, as shown and delineated on the attached Exhibit A.

ZONING:

State Land Use District: Urban  
County of Hawai'i: Industrial (ML-20)

BLNR – ISSUANCE OF A REVOCABLE PERMIT FOR COMMERCIAL USE OF A  
T-HANGAR FOR STORAGE OF AIRCRAFT AND A MAINTENANCE HANGAR  
HELICOPTER CONSULTANTS OF MAUI, LLC

Page 2

LAND TITLE STATUS:

Section 5(a) lands of the Hawai'i Admission Act: Ceded  
DHHL 30% entitlement lands pursuant to Hawai'i Admission Act YES \_\_\_ NO X

CURRENT USE STATUS:

Land presently encumbered by Governor's Executive Order No. 1519, dated July 17, 1952, setting aside 550.881 acres, being a portion of General Lyman Field under the control and management of the Hawaii Aeronautics Commission (subsequently transferred to the Department of Transportation) as a site for the Hilo Airport, now known as Hilo International Airport.

CHARACTER OF USE:

HCM will use the T-hangar for storage of aircraft (2011 Eurocopter EC 130 B4, Tail No. N-11QY) and a maintenance hangar as part of its Commercial Helicopter Tour Operations at ITO.

No Helicopter Tour Operations will be allowed from the T-hangar.

COMMENCEMENT DATE:

Upon execution of the parking permit.

MONTHLY RENTAL:

\$1,232.84 (\$1,006.40 as determined from the DOTA schedule of rates and charges established by appraisal of Airports property statewide plus \$226.44 for electricity).

SECURITY DEPOSIT:

\$3,698.52, or three (3) times the monthly rental in effect.

DCCA VERIFICATION:

Place of business registration confirmed:	YES <u>X</u>	NO ___
Registered business name confirmed:	YES <u>X</u>	NO ___
Good standing confirmed:	YES <u>X</u>	NO ___

BLNR – ISSUANCE OF A REVOCABLE PERMIT FOR COMMERCIAL USE OF A  
T-HANGAR FOR STORAGE OF AIRCRAFT AND A MAINTENANCE HANGAR  
HELICOPTER CONSULTANTS OF MAUI, LLC

Page 3

CHAPTER 343, HRS - ENVIRONMENTAL ASSESSMENT:

The State of Hawaii, Department of Transportation, Airports Division (DOTA), has determined that the subject land areas are covered by the Hilo International Airport Final Environmental Assessment (EA), dated April 15, 2003, and published by the Office of Environmental Quality Control (OEQC) in the May 8, 2003, issue of The Environmental Notice. Accordingly, all relevant mitigation from the EA and best management practices will be implemented to address the minimum impacts of this action.

REMARKS:

In accordance with Section 171-55, HRS, relating to Permits, the Department of Transportation proposes to issue a month-to-month revocable permit to HCM for storage of aircraft and a maintenance hangar to be used as part of its Commercial Helicopter Tour Operations at ITO.

RECOMMENDATION:

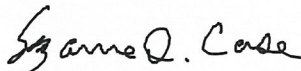
That the Board authorize the Department of Transportation to issue a month-to-month revocable permit to HCM, subject to: (1) terms and conditions herein outlined, which are by reference incorporated herein; and (2) such additional terms and conditions as may be prescribed by the Director of Transportation to best serve the interests of the State.

Respectfully submitted,

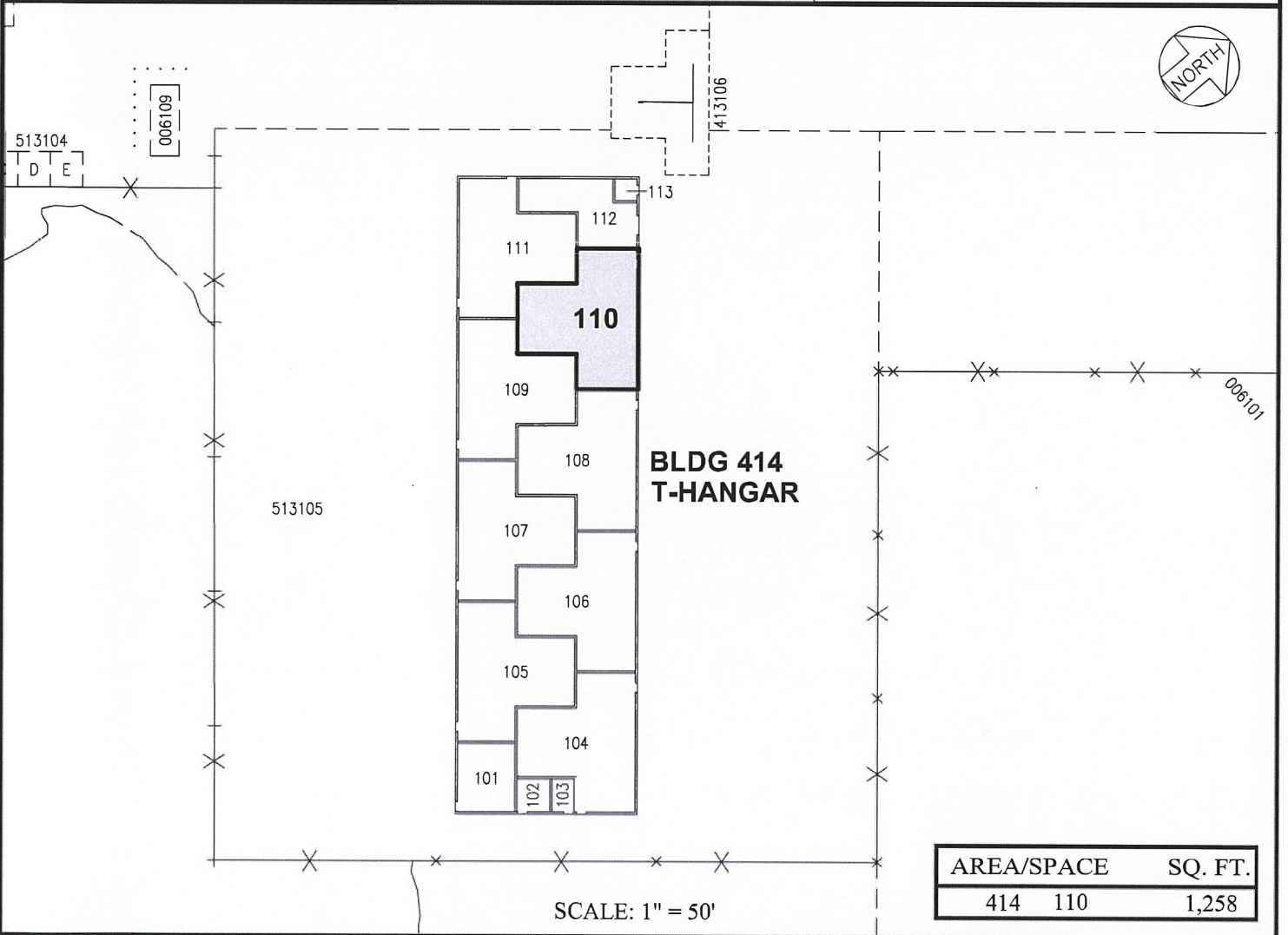
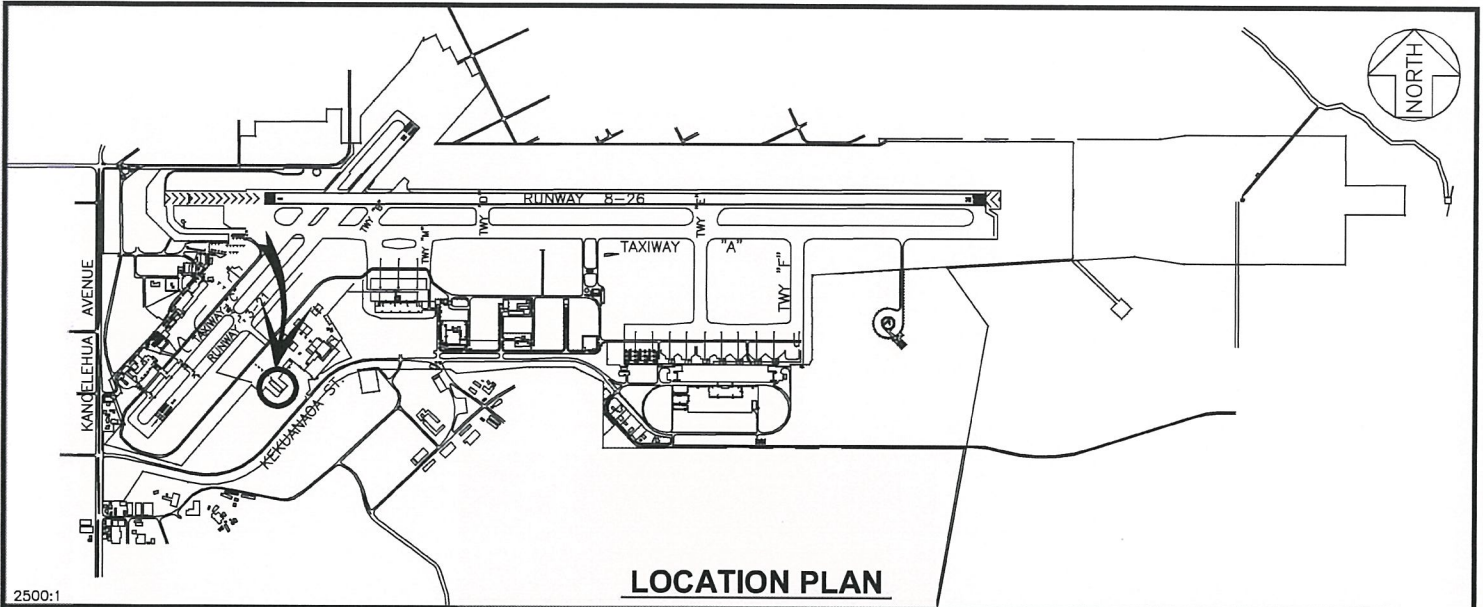


JADE T. BUTAY  
Director of Transportation

APPROVED FOR SUBMITTAL:



SUZANNE D. CASE  
Chairperson and Member



RP-9184

DATE : January 2022

EXHIBIT: **A**



HELICOPTER CONSULTANTS  
OF MAUI, LLC.

BUILDING 414  
T-HANGAR  
GROUND LEVEL

414110  
PLAT 40

**HILO INTERNATIONAL AIRPORT**