

DAVID Y. IGE
GOVERNOR



STATE OF HAWAII
DEPARTMENT OF TRANSPORTATION
869 PUNCHBOWL STREET
HONOLULU, HAWAII 96813-5097

FEBRUARY 25, 2022

JADE T. BUTAY
DIRECTOR

Deputy Directors
ROSS M. HIGASHI
EDUARDO P. MANGLALLAN
PATRICK H. MCCAIN
EDWIN H. SNIFFEN

IN REPLY REFER TO:

Board of Land and
Natural Resources
State of Hawai'i
Honolulu, Hawai'i

ISSUANCE OF A REVOCABLE PERMIT FOR COMMERCIAL USE OF A
T-HANGAR FOR STORAGE AND MAINTENANCE OF AIRCRAFT AND AN END
ROOM FOR A MAINTENANCE OFFICE AND STORAGE
SAFARI AVIATION, INC.
HILO INTERNATIONAL AIRPORT
TAX MAP KEY: (3) 2-1-12: PORTION OF 09

HAWAI'I

LEGAL REFERENCE:

Section 171-55, Hawai'i Revised Statutes.

APPLICANT:

Safari Aviation, Inc. (SAI), a Hawai'i corporation, whose mailing address is
3225 Akahi Street, Līhu'e, Hawaii 96766.

LOCATION AND TAX MAP KEY:

Portion of Hilo International Airport (ITO), Hilo, Island of Hawai'i, identified by
Tax Map Key: 3rd Division, 2-1-12: Portion of 09.

AREA:

Building/Room No. 414-101, containing an area of approximately 421 square feet, and
Building/Room No. 414-105, containing an area of approximately 1,236 square feet, as
shown and delineated on the attached map labeled Exhibit "A".

ZONING:

State Land Use District: Urban
County of Hawai'i: Industrial (ML-20)

ITEM M-7

BLNR – ISSUANCE OF A REVOCABLE PERMIT FOR COMMERCIAL USE
OF A T-HANGAR FOR STORAGE AND MAINTENANCE OF AIRCRAFT AND AN
END ROOM FOR A MAINTENANCE OFFICE AND STORAGE
SAFARI AVIATION, INC.

Page 2

LAND TITLE STATUS:

Section 5(a) lands of the Hawai'i Admission Act: Ceded
DHHL 30% entitlement lands pursuant to the Hawai'i Admission Act: YES NO

CURRENT USE STATUS:

Land presently encumbered by Governor's Executive Order No. 1519, dated July 17, 1952, setting aside 550.881 acres, being a portion of General Lyman Field under the control and management of the Hawaii Aeronautics Commission (subsequently transferred to the Department of Transportation) as a site for the Hilo Airport, now known as Hilo International Airport.

CHARACTER OF USE:

SAI will use the T-hangar for the storage of aircraft (Eurocopter AS350B2, Tail No. N-808SA) and a maintenance hangar to be used as part of its Commercial Helicopter Tour and Charter Operations.

SAI will use the end room as a maintenance office and storage space for parts, supplies, and business records as part of its Commercial Helicopter Tour and Charter Operations.

No Helicopter Tour Operations will be allowed from the T-hangar.

COMMENCEMENT DATE:

Upon execution of the revocable permit.

MONTHLY RENTAL:

\$1,445.06 (\$1,146.80 as determined from the DOTA schedule of rates and charges established by appraisal of Airports property statewide, plus \$298.26 for utilities).

SECURITY DEPOSIT:

\$4,335.18, or three (3) times the monthly rental in effect.

DCCA VERIFICATION:

Place of business registration confirmed:	YES <u>X</u>	NO <input type="checkbox"/>
Registered business name confirmed:	YES <u>X</u>	NO <input type="checkbox"/>
Good standing confirmed:	YES <u>X</u>	NO <input type="checkbox"/>

BLNR – ISSUANCE OF A REVOCABLE PERMIT FOR COMMERCIAL USE
OF A T-HANGAR FOR STORAGE AND MAINTENANCE OF AIRCRAFT AND AN
END ROOM FOR A MAINTENANCE OFFICE AND STORAGE
SAFARI AVIATION, INC.

Page 3

CHAPTER 343, HRS - ENVIRONMENTAL ASSESSMENT:

The State of Hawai'i, Department of Transportation, Airports Division (DOTA), has determined that the subject land areas are covered by the Hilo International Airport Final Environmental Assessment (EA), dated April 15, 2003, and published by the Office of Environmental Quality Control (OEQC) in the May 8, 2003, issue of The Environmental Notice. Accordingly, all relevant mitigation from the EA and best management practices will be implemented to address the minimum impacts of this action.


REMARKS:

In accordance with Section 171-55 HRS, relating to Permits, the Department of Transportation proposes to issue a month-to-month revocable permit to SAI for the storage of aircraft and a maintenance hangar, and a maintenance office and storage space for parts, supplies, and business records to be used as part of its Commercial Helicopter Tour and Charter Operations.

RECOMMENDATION:

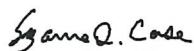
That the Board authorize the Department of Transportation to issue a month-to-month revocable permit to SAI, subject to: (1) terms and conditions herein outlined, which are by reference incorporated herein; and (2) such additional terms and conditions as may be prescribed by the Director of Transportation to best serve the interests of the State.

Respectfully submitted,

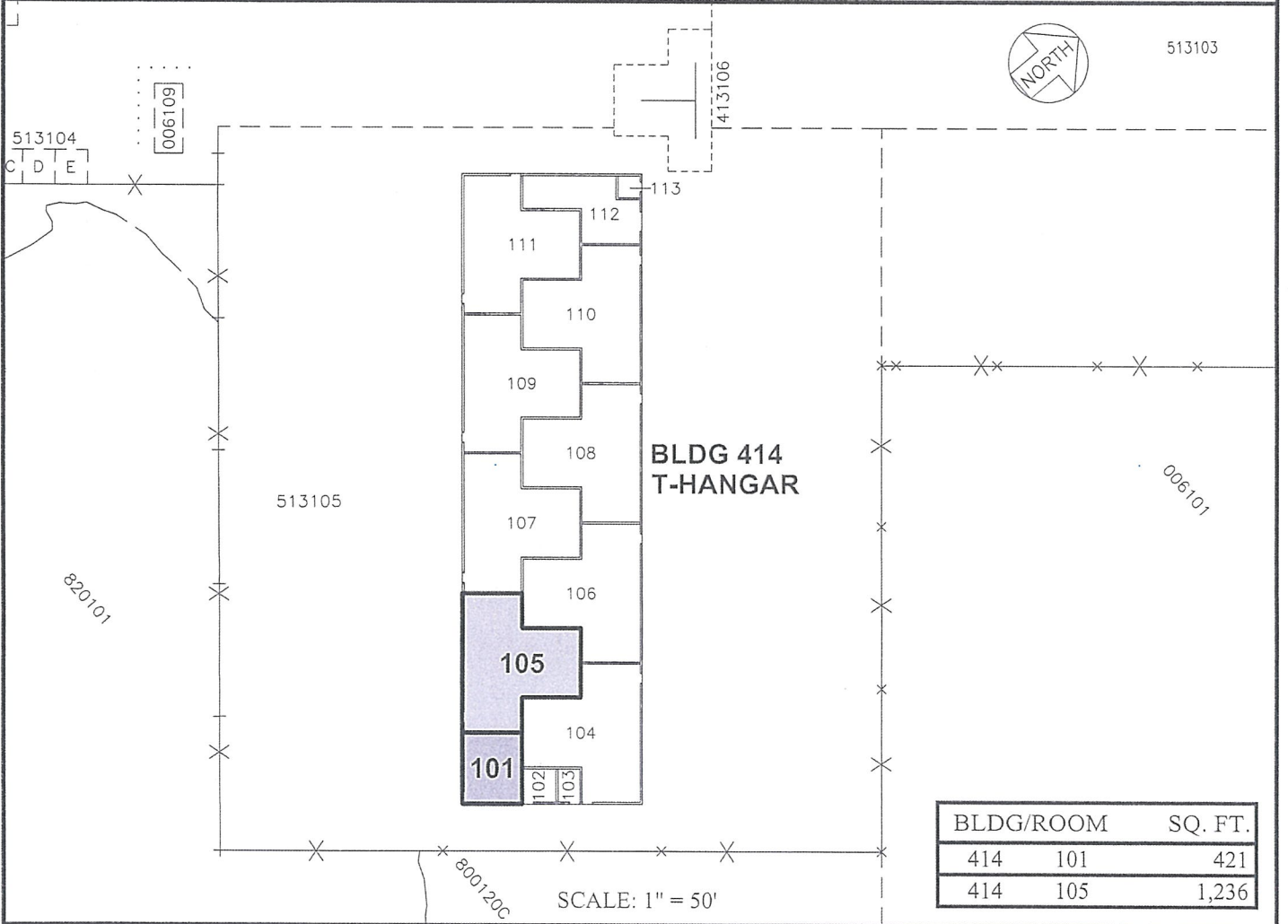
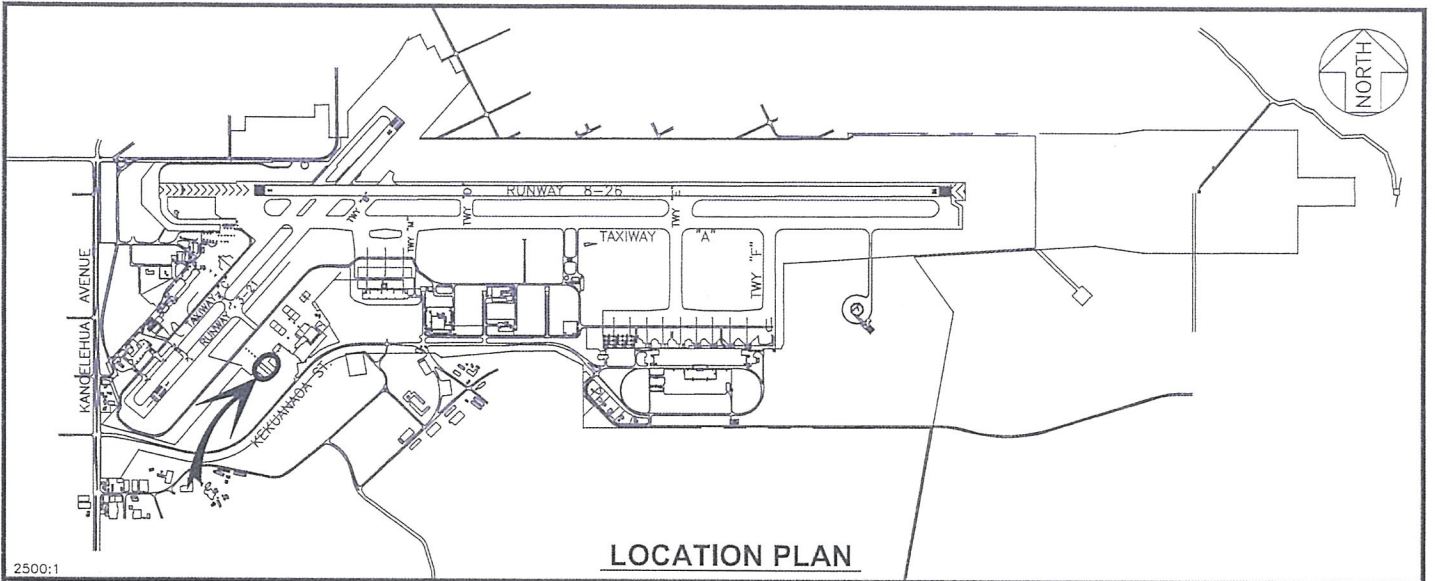


JADE T. BUTAY
Director of Transportation

APPROVED FOR SUBMITTAL:



SUZANNE D. CASE
Chairperson and Member



RP-9186	DATE : January 2022	EXHIBIT: A
	SAFARI AVIATION, INC.	BUILDING 414 T-HANGAR GROUND LEVEL
		414101 414105 PLAT 40

HILO INTERNATIONAL AIRPORT

N:\AIRPORTS\ITO_Hilo\CAD\PM\ito_414101-03.dwg