

DAVID Y. IGE  
GOVERNOR



**STATE OF HAWAII**  
**DEPARTMENT OF TRANSPORTATION**  
869 PUNCHBOWL STREET  
HONOLULU, HAWAII 96813-5097

JADE T. BUTAY  
DIRECTOR

Deputy Directors  
ROSS M. HIGASHI  
EDUARDO P. MANGLALLAN  
PATRICK H. MCCAIN  
EDWIN H. SNIFFEN

IN REPLY REFER TO:

Board of Land and  
Natural Resources  
State of Hawai'i  
Honolulu, Hawai'i

ISSUANCE OF A REVOCABLE PERMIT FOR COMMERCIAL  
USE OF A T-HANGAR FOR STORAGE OF AIRCRAFT AND A  
MAINTENANCE HANGAR  
K & S HELICOPTERS INC.  
HILO INTERNATIONAL AIRPORT  
TAX MAP KEY: (3) 2-1-12: PORTION OF 09

HAWAI'I

LEGAL REFERENCE:

Section 171-55, Hawai'i Revised Statutes.

APPLICANT:

K & S Helicopters Inc. (KSH), a Hawai'i corporation, whose mailing address is  
P.O. Box 5371, Kailua-Kona, Hawai'i 96745.

LOCATION AND TAX MAP KEY:

Portion of Hilo International Airport (ITO), Hilo, Island of Hawai'i, identified by  
Tax Map Key: 3<sup>rd</sup> Division, 2-1-12: Portion of 09.

AREA:

Building/Room No. 414-106, containing an area of approximately 1,258 square feet, as  
shown and delineated on the attached map labeled Exhibit "A".

ZONING:

State Land Use District:	Urban
County of Hawaii:	Industrial (ML-20)

BLNR – ISSUANCE OF A REVOCABLE PERMIT FOR COMMERCIAL USE OF A  
T-HANGAR FOR STORAGE OF AIRCRAFT AND A MAINTENANCE HANGAR  
K & S HELICOPTERS INC.

Page 2

LAND TITLE STATUS:

Section 5(a) lands of the Hawai'i Admission Act: Ceded

DHHL 30% entitlement lands pursuant to the Hawai'i Admission Act: YES    NO X

CURRENT USE STATUS:

Land presently encumbered by Governor's Executive Order No. 1519, dated July 17, 1952, setting aside 550.881 acres, being a portion of General Lyman Field under the control and management of the Hawaii Aeronautics Commission (subsequently transferred to the Department of Transportation) as a site for the Hilo Airport, now known as Hilo International Airport.

CHARACTER OF USE:

KSH will use the T-hangar for storage of aircraft (1986 McDonnell Douglas Helicopter, 500E, Tail No. N-508PH) and a maintenance hangar to be used as part of its Commercial Helicopter Tour Operation at ITO.

No Helicopter Tour Operations will be allowed from the T-hangar.

COMMENCEMENT DATE:

Upon execution of the revocable permit.

MONTHLY RENTAL:

\$1,232.84 (\$1,006.40 as determined from the DOTA schedule of rates and charges established by appraisal of Airports property statewide plus \$226.44 for electricity).

SECURITY DEPOSIT:

\$3,698.52, or three times the monthly rental in effect.

DCCA VERIFICATION:

Place of business registration confirmed:	YES <u>X</u>	NO <u>  </u>
Registered business name confirmed:	YES <u>X</u>	NO <u>  </u>
Good standing confirmed:	YES <u>X</u>	NO <u>  </u>



BLNR – ISSUANCE OF A REVOCABLE PERMIT FOR COMMERCIAL USE OF A  
T-HANGAR FOR STORAGE OF AIRCRAFT AND A MAINTENANCE HANGAR  
K & S HELICOPTERS INC.

Page 3

CHAPTER 343, HRS - ENVIRONMENTAL ASSESSMENT:

The State of Hawai'i, Department of Transportation, Airports Division (DOTA), has determined that the subject land areas are covered by the Hilo International Airport Final Environmental Assessment (EA), dated April 15, 2003, and published by the Office of Environmental Quality Control (OEQC) in the May 8, 2003, issue of The Environmental Notice. Accordingly, all relevant mitigation from the EA and best management practices will be implemented to address the minimum impacts of this action.

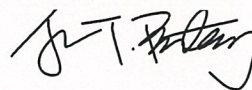
REMARKS:

In accordance with Section 171-55, HRS, relating to Permits, the Department of Transportation proposes to issue a month-to-month revocable permit to KSH for storage of aircraft and a maintenance hangar to be used as part of its Commercial Helicopter Tour Operation at ITO.

RECOMMENDATION:

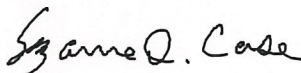
That the Board authorize the Department of Transportation to issue a month-to-month revocable permit to KSH, subject to: (1) terms and conditions herein outlined, which are by reference incorporated herein; and (2) such additional terms and conditions as may be prescribed by the Director of Transportation to best serve the interests of the State.

Respectfully submitted,

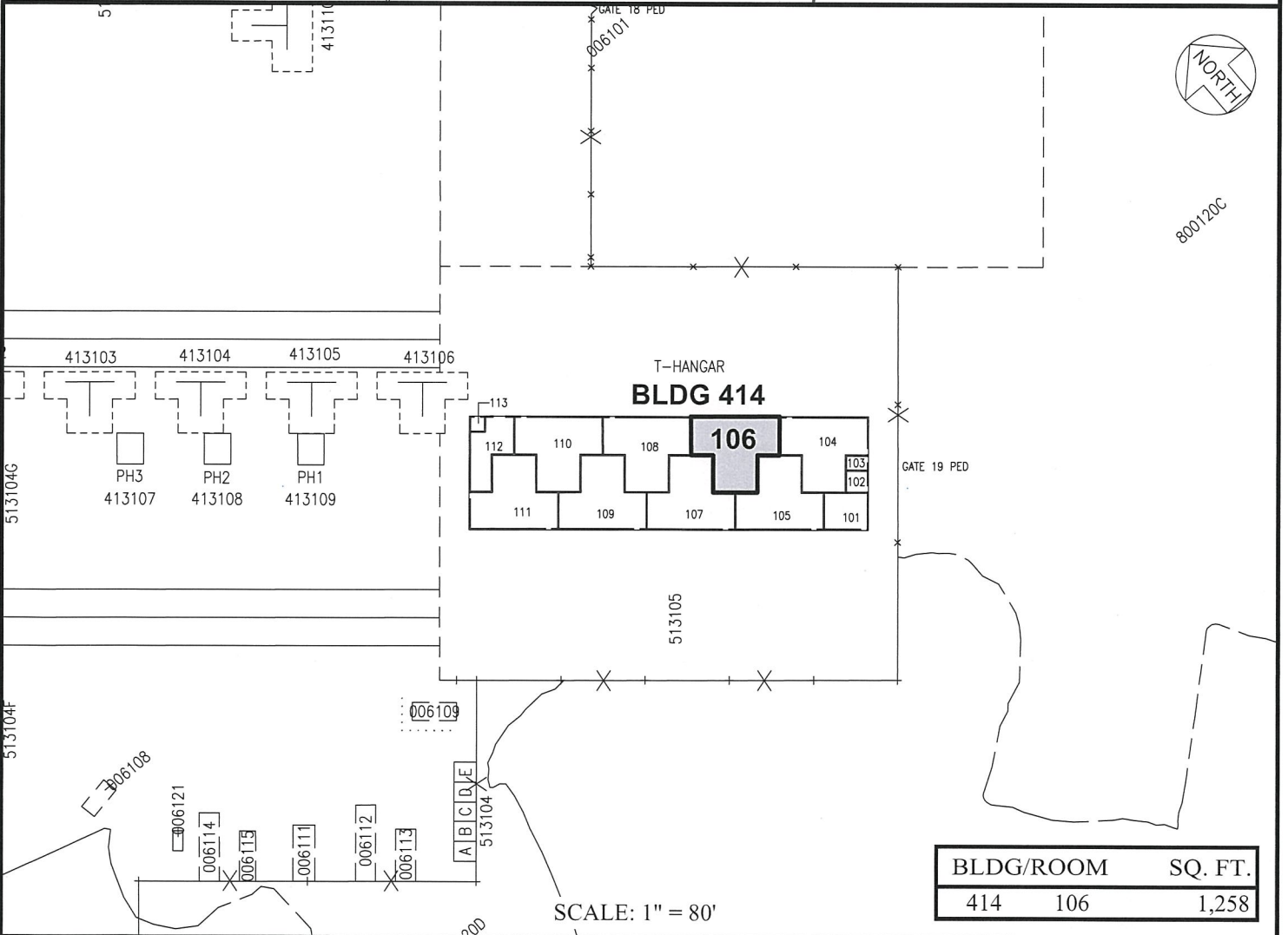
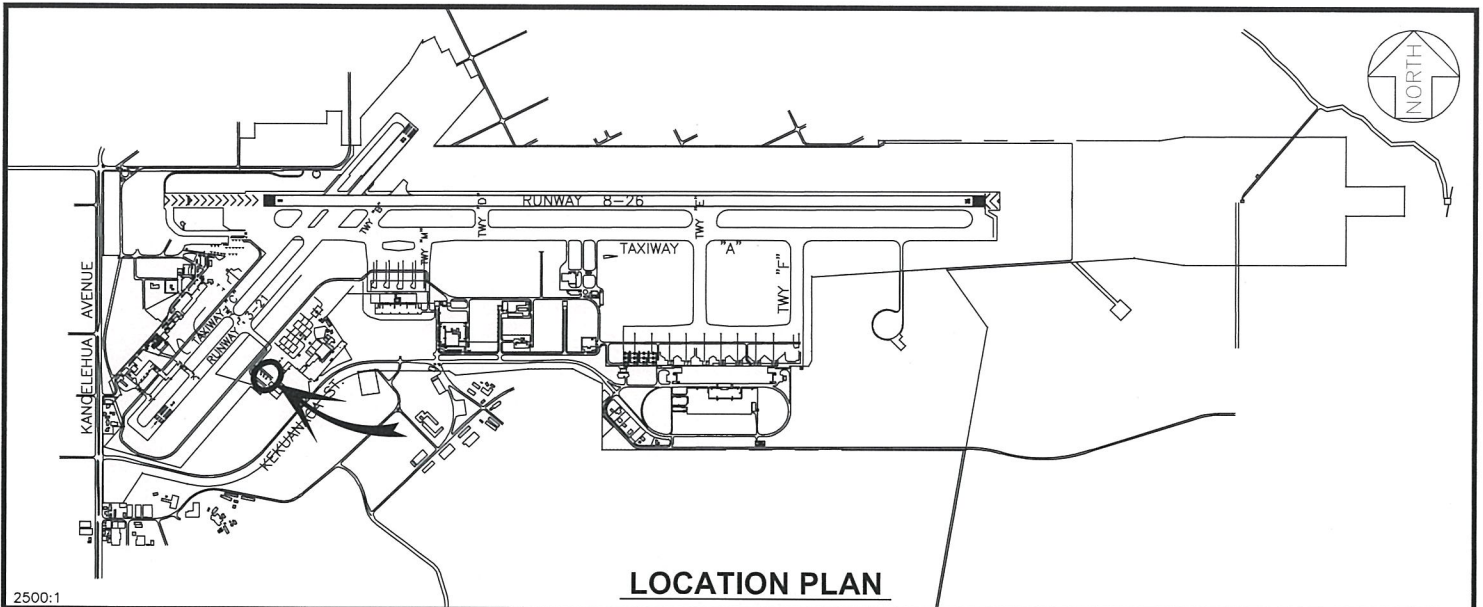


JADE T. BUTAY  
Director of Transportation

APPROVED FOR SUBMITTAL:



SUZANNE D. CASE  
Chairperson and Member



RP-9210

DATE : FEBRUARY 2022

EXHIBIT: **A**



Airports Division

K & S HELICOPTERS, INC.

T-HANGAR

414106

PLAT 40

**HILO INTERNATIONAL AIRPORT**

N:\AIRPORTS\ITO\_Hilo\CAD\PM\ito\_414106-01.dwg