

DAVID Y. IGE
GOVERNOR



STATE OF HAWAII
DEPARTMENT OF TRANSPORTATION
869 PUNCHBOWL STREET
HONOLULU, HAWAII 96813-5097

JADE T. BUTAY
DIRECTOR

Deputy Directors
ROSS M. HIGASHI
EDUARDO P. MANGLALLAN
PATRICK H. MCCAIN
EDWIN H. SNIFFEN

IN REPLY REFER TO:

Board of Land and
Natural Resources
State of Hawai'i
Honolulu, Hawai'i

ISSUANCE OF A REVOCABLE PERMIT FOR TWO AIRCRAFT PARKING
PFISTER'S FLYING WAHINE LLC
KAWAIHĀPAI AIRFIELD, WAIALUA, HAWAI'I
TAX MAP KEY: (1) 6-08-14:001 (PORTION)

O'AHU

REQUEST:

Issuance of a Revocable Permit for a Two Aircraft Parking (Parking Permit) to Pfister's Flying Wahine LLC, situated at Kawaihāpai Airfield fka Dillingham Airfield.

LEGAL REFERENCE:

Section 171-55, Hawai'i Revised Statutes (HRS).

APPLICANT:

Pfister's Flying Wahine LLC, whose mailing address is 68-077D Akule Street, Waialua, Hawai'i 96791.

LOCATION AND TAX MAP KEY:

A portion of the Airfield, Waialua, Island of Oahu, State of Hawai'i, identified by Tax Map Key: 1st Division, 6-08-14:001 (portion).

AREA:

Area/Space Nos. 404-116, containing an area of approximately 1,350 square feet, and 405-107, containing an area of approximately 1,890 square feet, as shown and delineated on the attached map labeled Exhibit "A".

BLNR – ISSUANCE OF A REVOCABLE PERMIT FOR A TWO AIRCRAFT PARKING
PFISTER’S FLYING WAHINE LLC

Page 2

ZONING:

State Land Use District: Agriculture
City and County of Honolulu LUO: AG-2

LAND TITLE STATUS:

Ceded land, which the State of Hawai‘i is currently leasing the land from the United States of America.

CHARACTER OF USE:

Two aircraft tie-downs (1969 Beechcraft Fixed Wing Single-Engine B-19A Tail No. N-6123N and 1973 Schweizer 2-32 Tail No. N-17948).

COMMENCEMENT DATE:

To be determined by the Director of Transportation at a later date.

MONTHLY RENTAL:

\$108.00 (as determined from the DOTA schedule of rates and charges, established by appraisal of Airports property statewide).

SECURITY DEPOSIT:

\$324.00, or three (3) times the monthly rental in effect.

CHAPTER 343, HRS - ENVIRONMENTAL ASSESSMENT:

The subject land area is covered by the revised and updated Environmental Assessment for the Dillingham Airfield Master Plan and FAR Part 150 Noise Compatibility Program project, referenced as State Contract No. 26985, State Project No. AO2011-01. This Environmental Assessment evaluated the environmental effects of the recommended Dillingham Airfield Master Plan to meet existing and forecast general aviation demands and was prepared for the State of Hawai‘i, Department of Transportation, Airports Division.

BLNR – ISSUANCE OF A REVOCABLE PERMIT FOR A TWO AIRCRAFT PARKING
PFISTER’S FLYING WAHINE LLC

Page 3


REMARKS:

The issuance of a Parking Permit to Pfister’s Flying Wahine LLC, for two aircraft parking situated at the Airfield, complies with Chapter 343, Exemption Class 1.D.10 as a continuing aeronautical use, and is in accordance with Section 171-55 HRS, relating to Permits.

RECOMMENDATION:

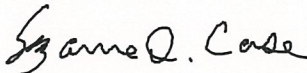
That the Board authorize the Department of Transportation to issue a month-to-month parking permit to Pfister’s Flying Wahine LLC, subject to: (1) terms and conditions herein outlined, which are by reference incorporated herein; and (2) such additional terms and conditions as may be prescribed by the Director of Transportation to best serve the interests of the State.

Respectfully submitted,

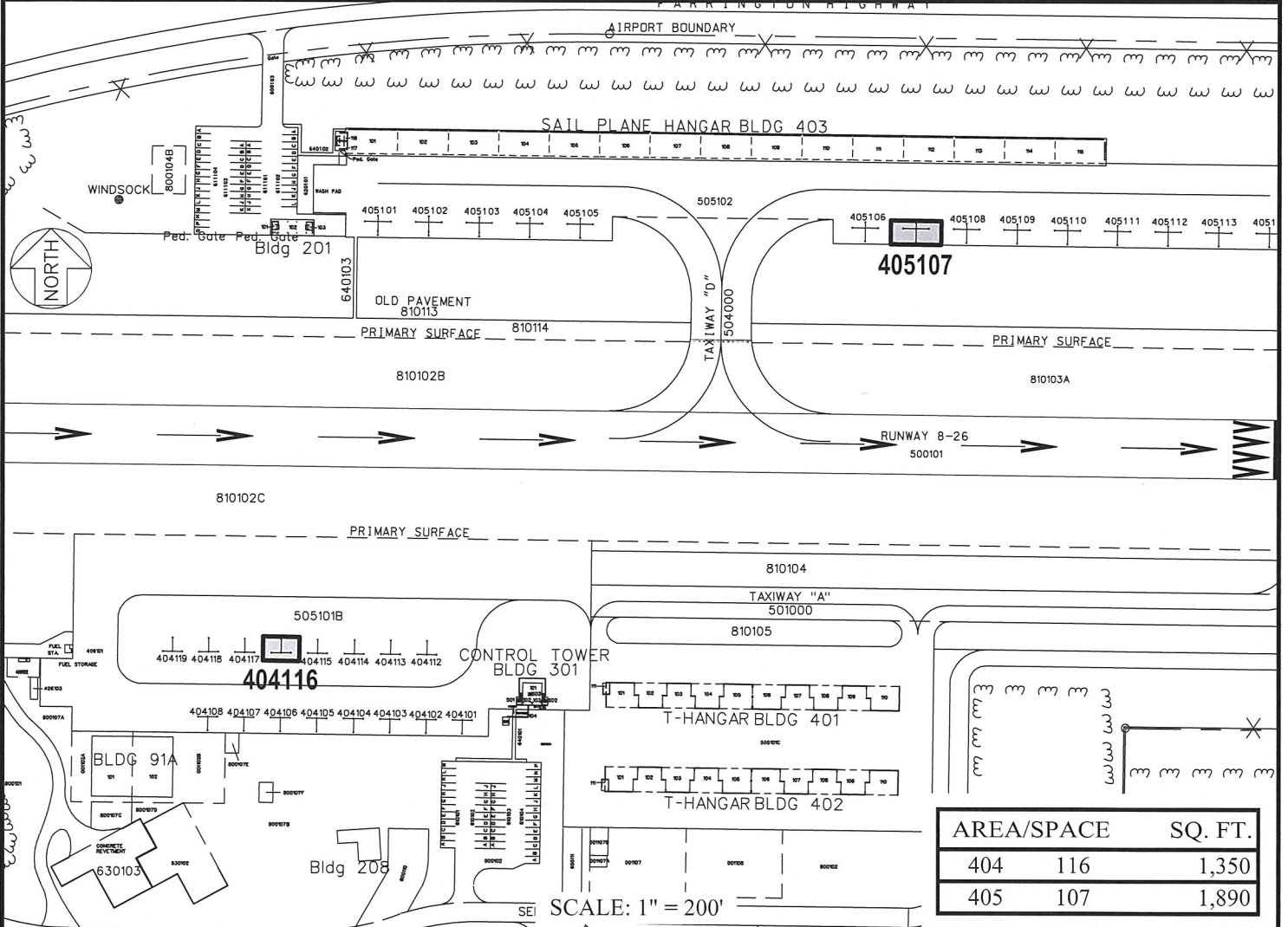
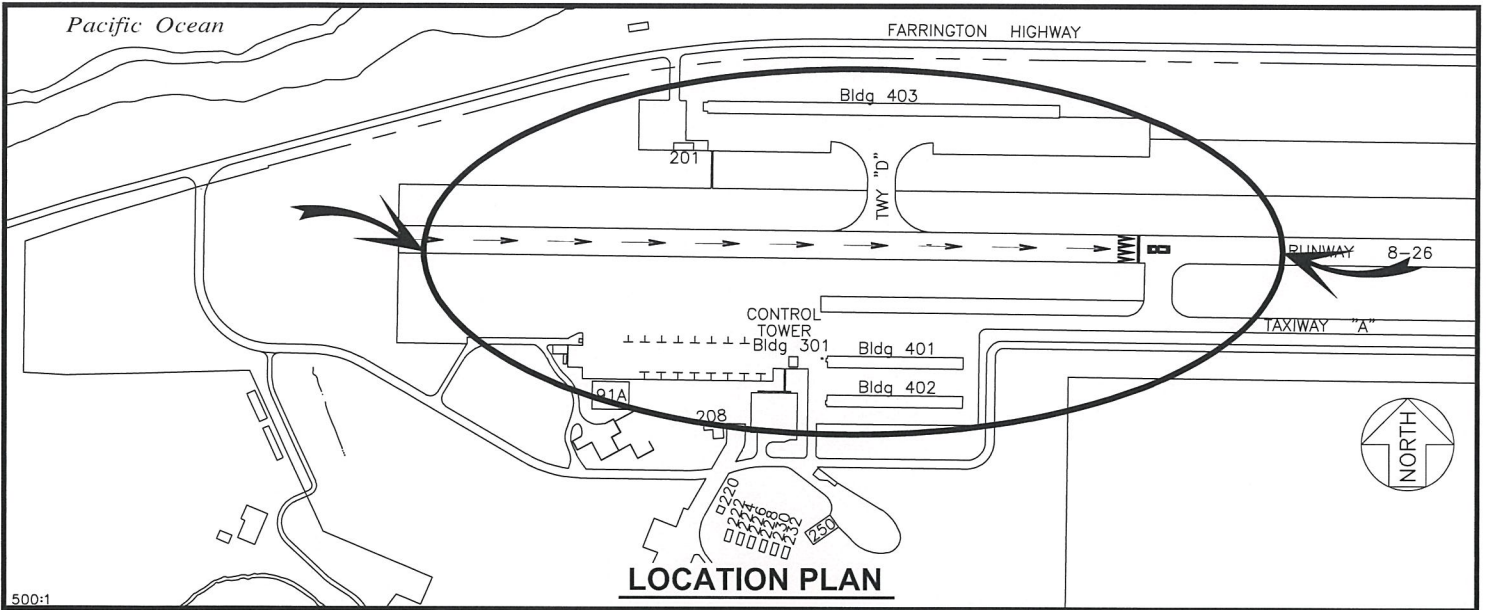


JADE T. BUTAY
Director of Transportation

APPROVED FOR SUBMITTAL:



SUZANNE D. CASE
Chairperson and Member



PP-21-0020

DATE : DECEMBER 2021

EXHIBIT: **A**



Airports Division

PFISTER'S FLYING WAHINE, LLC

TIE-DOWNS

404116
405107

PLAT A1, B1