

DAVID Y. IGE
GOVERNOR



STATE OF HAWAII
DEPARTMENT OF TRANSPORTATION
869 PUNCHBOWL STREET
HONOLULU, HAWAII 96813-5097

JADE T. BUTAY
DIRECTOR

Deputy Directors
ROSS M. HIGASHI
EDUARDO P. MANGLALLAN
PATRICK H. MCCAIN
EDWIN H. SNIFFEN

IN REPLY REFER TO:

Board of Land and
Natural Resources
State of Hawai'i
Honolulu, Hawai'i

ISSUANCE OF A REVOCABLE PERMIT FOR VEHICLE PARKING
AEKO KULA, LLC DBA ALOHA AIR CARGO
ELLISON ONIZUKA KONA INTERNATIONAL AIRPORT AT KEĀHOLE
TAX MAP KEY: (3) 7-3-43: PORTION OF 003

HAWAI'I

REQUEST:

Issuance of a Revocable Permit for Vehicle Parking (Parking Permit) to Aeko Kula, LLC DBA Aloha Air Cargo for three (3) vehicle parking spaces, situated at Ellison Onizuka Kona International Airport at Keāhole.

LEGAL REFERENCE:

Section 171-55, Hawai'i Revised Statutes (HRS).

APPLICANT:

Aeko Kula, LLC DBA Aloha Air Cargo (AAC), whose business address is 50 Elliott Street, Honolulu, Hawai'i 96819.

LOCATION AND TAX MAP KEY:

Portion of Ellison Onizuka Kona International Airport at Keāhole (KOA), Kailua-Kona, Island of Hawai'i, identified by Tax Map Key: 3rd Division, 7-3-43: Portion of 003.

AREA:

Area/Space No. 610-155U, containing an area of approximately 450 square feet, as shown and delineated on the attached Exhibit A.

BLNR – ISSUANCE OF A REVOCABLE PERMIT FOR THREE VEHICLE PARKING SPACES, AEKO KULA, LLC DBA ALOHA AIR CARGO

Page 2

ZONING:

State Land Use District:	Urban & Conservation
County of Hawai'i:	Industrial (MG-1a) and Open

LAND TITLE STATUS:

Section 5(a) lands of the Hawai'i Admission Act: Ceded
DHHL 30% entitlement lands pursuant to Hawai'i Admission Act YES___ NO X

CURRENT USE STATUS:

Land presently encumbered by Governor's Executive Order No. 3074, dated August 20, 1981, setting aside 4,204.10 acres designated as KOA under the control and management of the State of Hawai'i, Department of Transportation, Airports Division for Airport Purposes.

CHARACTER OF USE:

AAC will use three (3) vehicle parking spaces as part of their cargo operations at KOA.

COMMENCEMENT DATE:

Upon execution of the parking permit.

MONTHLY RENTAL:

\$165.00 (\$55.00 per stall as determined from the Department of Transportation, Airports Division schedule of rates and charges established by appraisal of Airports property statewide).

SECURITY DEPOSIT:

\$495.00, or three (3) times the monthly rental in effect.

CHAPTER 343, HRS - ENVIRONMENTAL ASSESSMENT:

The subject land area pertaining to this action was evaluated for environmental impact by the Keahole Airport Master Plan Final Environmental Impact Statement (EIS), published in The Environmental Notice on November 8, 1988, and accepted by the Governor on December 19, 1988. This action is consistent with the 1988 EIS and the same mitigation conditions apply.

BLNR – ISSUANCE OF A REVOCABLE PERMIT FOR THREE VEHICLE PARKING SPACES, AEKO KULA, LLC DBA ALOHA AIR CARGO

Page 3

REMARKS:

In accordance with Section 171-55, HRS, relating to Permits, the Department of Transportation proposes to issue a month-to-month Parking Permit to AAC for three (3) vehicle parking spaces as part of their cargo operations at KOA.

RECOMMENDATION:

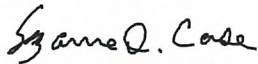
That the Board authorize the Department of Transportation to issue a month-to-month Parking Permit to AAC, subject to: (1) terms and conditions herein outlined, which are by reference incorporated herein; and (2) such additional terms and conditions as may be prescribed by the Director of Transportation to best serve the interests of the State.

Respectfully submitted,

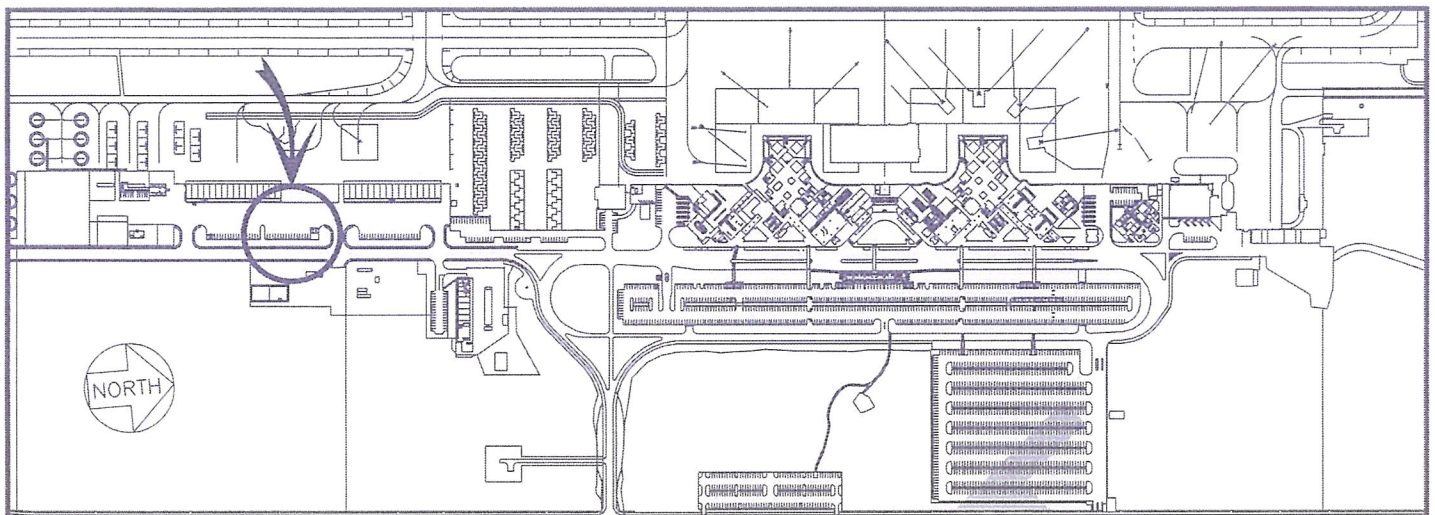


JADE T. BUTAY
Director of Transportation

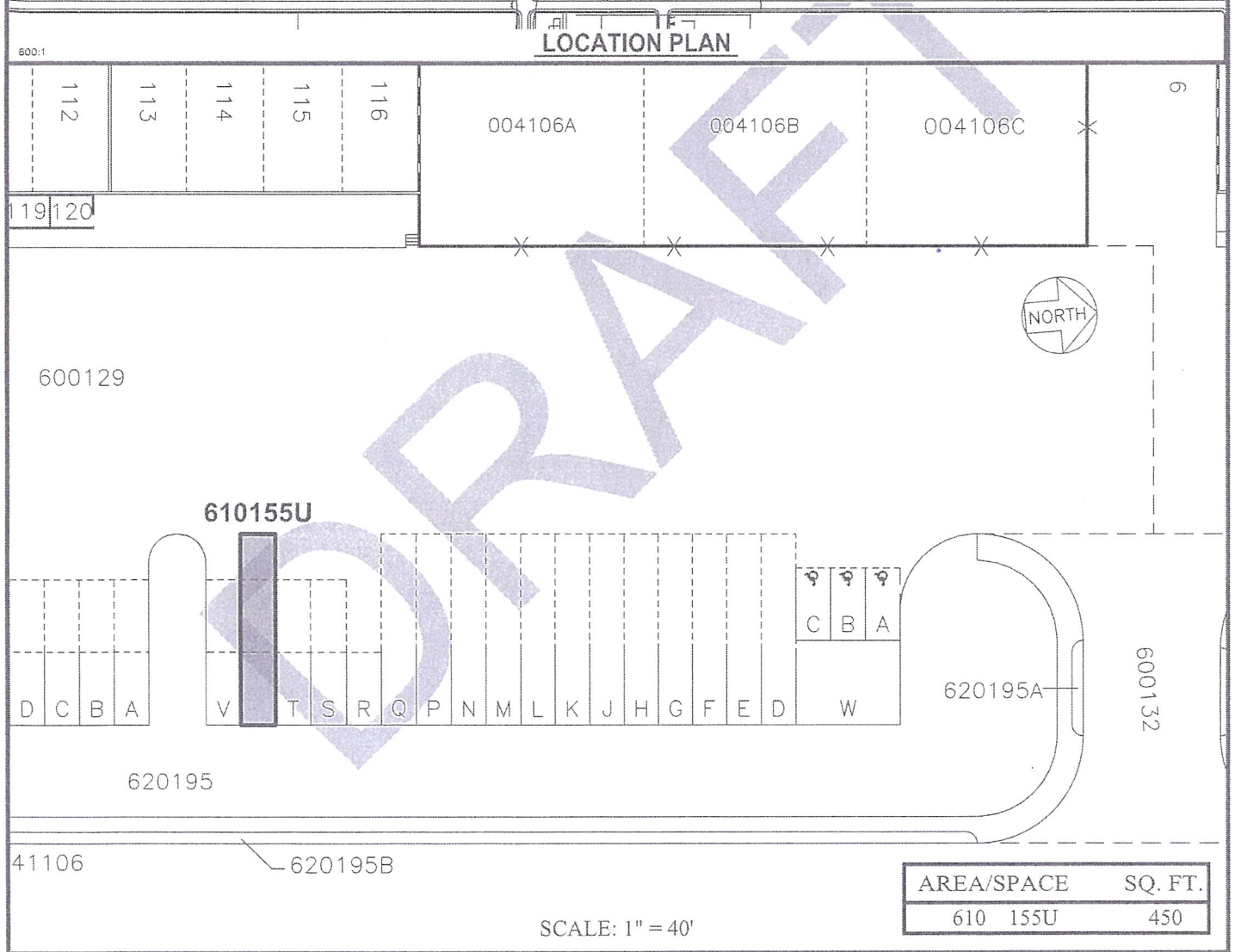
APPROVED FOR SUBMITTAL:



SUZANNE D. CASE
Chairperson and Member



LOCATION PLAN



SCALE: 1" = 40'

AREA/SPACE	SQ. FT.
610 155U	450

DRAFT

DATE : FEBRUARY 2022

EXHIBIT: A



Airports Division

AEKO KULA, LLC

PARKING STALL
& PAVED AREA
GROUND LEVEL

610155U

PLAT C1, 39

ELLISON ONIZUKA KONA INTERNATIONAL AIRPORT AT KEAHOLE

N:\AIRPORTS\KOA_Kona\CAD\PM\koa_610155u-01_draft.dwg