



STATE OF HAWAII
DEPARTMENT OF TRANSPORTATION
869 PUNCHBOWL STREET
HONOLULU, HAWAII 96813-5097

IN REPLY REFER TO:

Board of Land and
Natural Resources
State of Hawai'i
Honolulu, Hawai'i

ISSUANCE OF A REVOCABLE PERMIT FOR RAMP SPACE
FOR GROUND SERVICE EQUIPMENT PARKING
HAWAIIAN AIRLINES, INC.
ELLISON ONIZUKA KONA INTERNATIONAL AIRPORT AT KEĀHOLE
TAX MAP KEY: (3) 7-3-43: PORTION OF 003 HAWAII

LEGAL REFERENCE:

Section 171-55, Hawai'i Revised Statutes (HRS).

APPLICANT:

Hawaiian Airlines, Inc. (Hawaiian), whose business address is 3375 Koapaka Street,
Suite G350, Honolulu, Hawai'i 96819.

LOCATION AND TAX MAP KEY:

Portion of Ellison Onizuka Kona International Airport at Keāhole (KOA), Kailua-Kona,
Island of Hawai'i, identified by Tax Map Key: 3rd Division, 7-3-43: Portion of 003.

AREA:

Area/Space No. 630-155, containing an area of approximately 1,300 square feet of
improved, paved land, as shown and delineated on the attached Exhibit A.

ZONING:

State Land Use District:	Urban & Conservation
County of Hawai'i:	Industrial (MG-1a) and Open

ITEM M-11

BLNR – ISSUANCE OF A REVOCABLE PERMIT FOR RAMP SPACE
FOR GROUND SERVICE EQUIPMENT PARKING, HAWAIIAN AIRLINES, INC.
Page 2

LAND TITLE STATUS:

Section 5(a) lands of the Hawai‘i Admission Act: Ceded
DHHL 30% entitlement lands pursuant to Hawai‘i Admission Act YES ___ NO X

CURRENT USE STATUS:

Land presently encumbered by Governor’s Executive Order No. 3074, dated August 20, 1981, setting aside 4,204.10 acres designated as KOA under the control and management of the State of Hawai‘i, Department of Transportation, Airports Division for Airport Purposes.

CHARACTER OF USE:

Hawaiian will use the ramp space for parking ground service equipment in support of its Signatory Airline Carrier Operation at KOA.

COMMENCEMENT DATE:

Upon execution of the revocable permit.

MONTHLY RENTAL:

\$223.17 (based on a rate of \$2.06 per square foot, per annum for improved, paved land, as determined from the Department of Transportation, Airports Division schedule of rates and charges established by appraisal of Airports property statewide).

SECURITY DEPOSIT:

\$669.51, or three (3) times the monthly rental in effect.

DCCA VERIFICATION:

Place of business registration confirmed:	YES <u>X</u>	NO ___
Registered business name confirmed:	YES <u>X</u>	NO ___
Good standing confirmed:	YES <u>X</u>	NO ___

CHAPER 343, HRS - ENVIRONMENTAL ASSESSMENT:

The State of Hawaii, Department of Transportation, Airports Division, has determined that the subject land areas are covered by the Keahole Airport Master Plan Final Environmental Impact Statement (EIS), published by the Office of Environmental

BLNR – ISSUANCE OF A REVOCABLE PERMIT FOR RAMP SPACE
FOR GROUND SERVICE EQUIPMENT PARKING, HAWAIIAN AIRLINES, INC.
Page 3

Quality Control (OEQC) in the November 8, 1988, issue of The Environmental Notice and accepted by the Governor on December 19, 1988. Accordingly, all relevant mitigation from the EIS and best management practices will be implemented to address the minimum impacts of this action.

REMARKS:

In accordance with Section 171-55, HRS, relating to Permits, the Department of Transportation proposes to issue a month-to-month revocable permit to Hawaiian for ramp space for parking ground service equipment in support of its Signatory Airline Carrier Operation at KOA.

RECOMMENDATION:

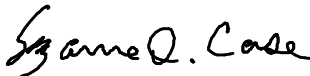
That the Board authorize the Department of Transportation to issue a month-to-month revocable permit to Hawaiian, subject to: (1) terms and conditions herein outlined, which are by reference incorporated herein; and (2) such additional terms and conditions as may be prescribed by the Director of Transportation to best serve the interests of the State.

Respectfully submitted,

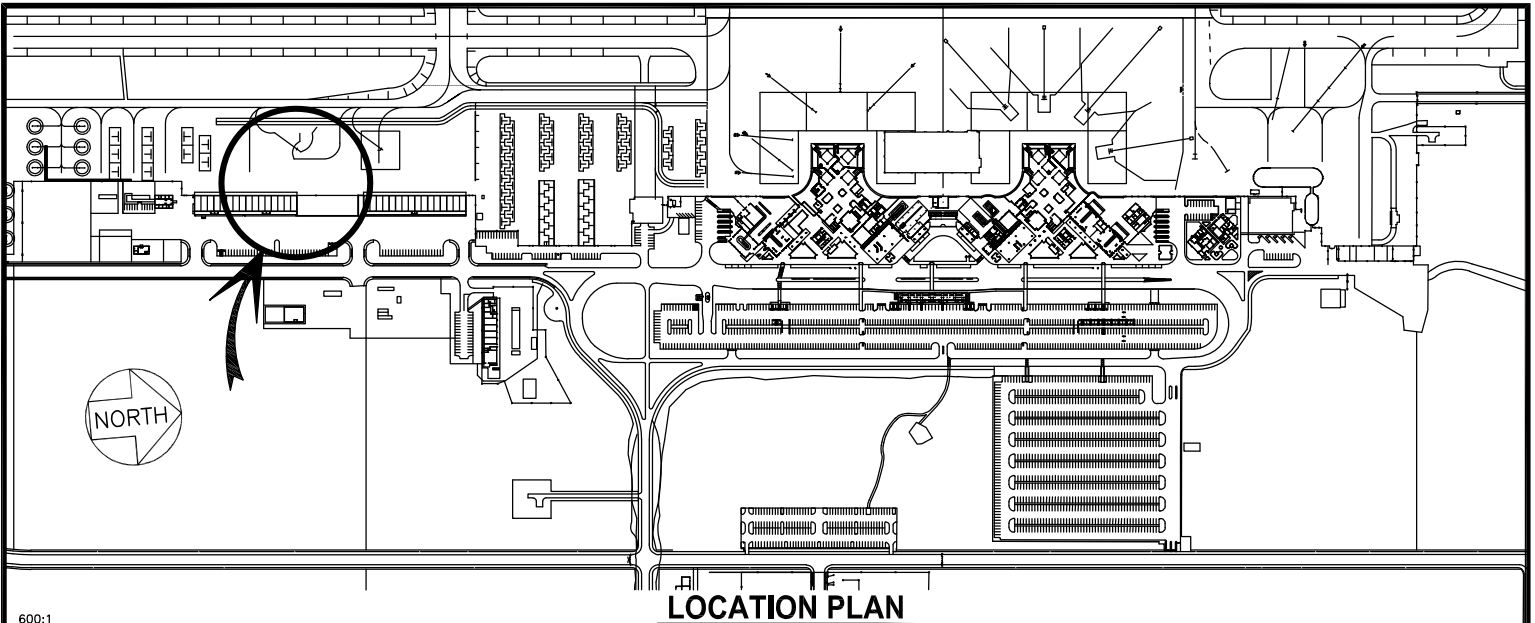


JADE T. BUTAY
Director of Transportation

APPROVED FOR SUBMITTAL:

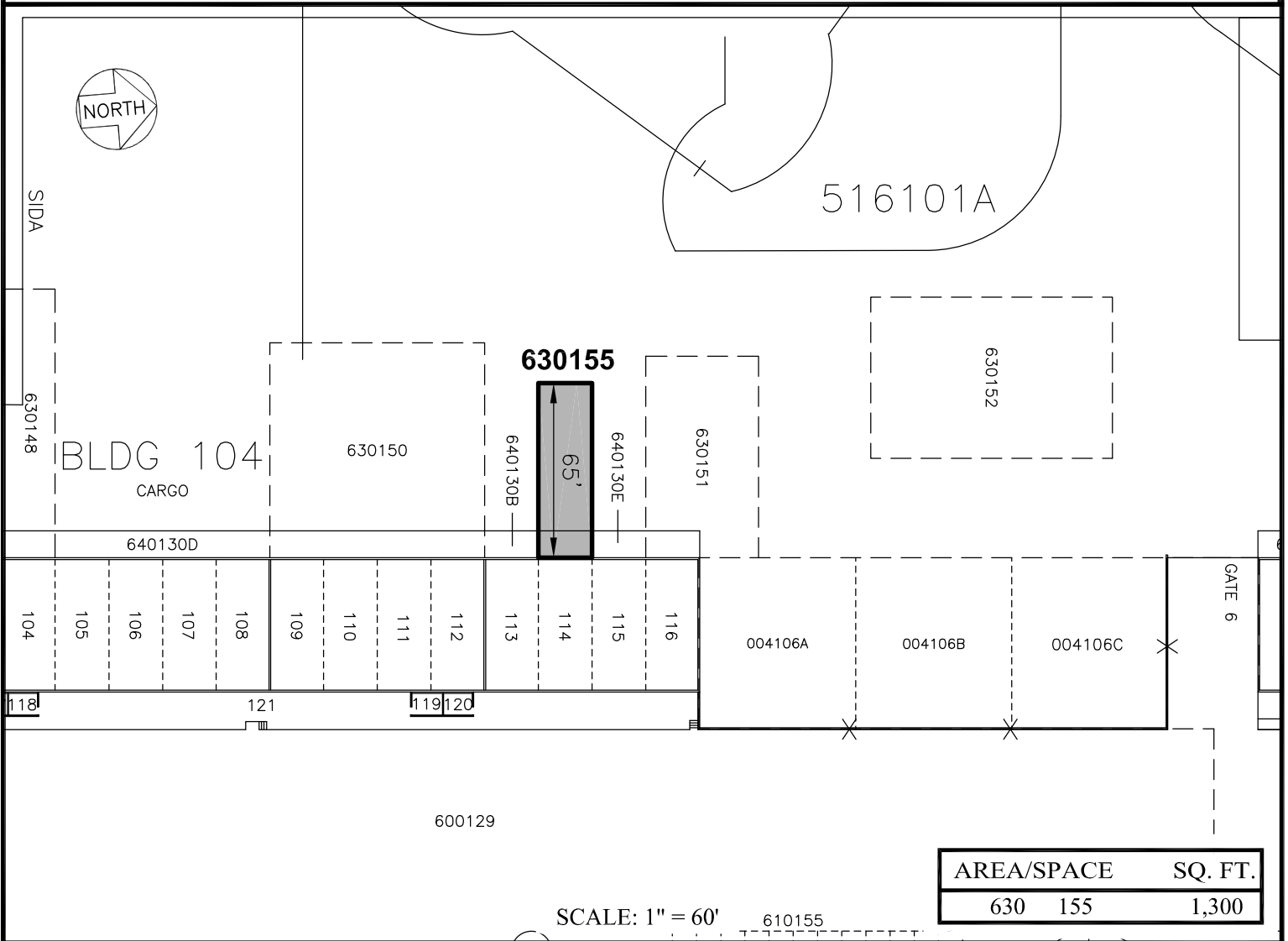


SUZANNE D. CASE
Chairperson and Member




LOCATION PLAN

600:1



AREA/SPACE	SQ. FT.
630 155	1,300

SCALE: 1" = 60'

RP-9267	DATE : JULY 2020	EXHIBIT: A	
 Airports Division	HAWAIIAN AIRLINES, INC.	CARGO RAMP PAVED AREA	630155 PLAT C1, 39

ELLISON ONIZUKA KONA INTERNATIONAL AIRPORT AT KEAHOLE