



**STATE OF HAWAII**  
**DEPARTMENT OF TRANSPORTATION**  
869 PUNCHBOWL STREET  
HONOLULU, HAWAII 96813-5097

JADE T. BUTAY  
DIRECTOR

Deputy Directors  
ROSS M. HIGASHI  
EDUARDO P. MANGLALLAN  
EDWIN H. SNIFFEN

IN REPLY REFER TO:

Board of Land and  
Natural Resources  
State of Hawai'i  
Honolulu, Hawai'i

ISSUANCE OF A REVOCABLE PERMIT FOR TWO T-HANGARS  
FOR THE STORAGE AND MAINTENANCE OF AIRCRAFT IN SUPPORT OF  
A COMMERCIAL AERONAUTICAL FLIGHT SCHOOL BUSINESS  
GEORGE'S AVIATION SERVICES, INC.  
DANIEL K. INOUE INTERNATIONAL AIRPORT O'AHU  
TAX MAP KEY: (1) 1-1-76: PORTION OF 20

REQUEST:

Issuance of a revocable permit for two T-hangars for storage and maintenance of aircraft in support of a commercial aeronautical flight school business to George's Aviation Services, Inc., situated at Daniel K. Inouye International Airport.

LEGAL REFERENCE:

Section 171-55, Hawai'i Revised Statutes (HRS).

APPLICANT:

George's Aviation Services, Inc., whose mailing address is 18 Lagoon Drive, Honolulu, Hawai'i 96819.

LOCATION AND TAX MAP KEY:

A portion of Daniel K. Inouye International Airport, Island of Oahu, State of Hawai'i, identified by Tax Map Key: 1<sup>st</sup> Division, 1-1-76: portion of 20.

AREA:

Small Plane Hangar Unit Nos. 420-124 and 420-126, containing an area of approximately 1,252 square feet, and 1,240 square feet, as shown and delineated on the attached map labeled Exhibit "A".

**ITEM M-2**

BLNR – ISSUANCE OF A REVOCABLE PERMIT FOR TWO T-HANGARS FOR THE STORAGE AND MAINTENANCE OF AIRCRAFT IN SUPPORT OF A COMMERCIAL AERONAUTICAL FLIGHT SCHOOL BUSINESS, GEORGE’S AVIATION SERVICES, INC.  
Page 2

ZONING:

State Land Use District: Urban  
City and County of Honolulu LUO: Industrial (I-2)

LAND TITLE STATUS:

Non-Ceded - Section 5(a) lands of the Hawai‘i Admission Act  
DHHL 30% entitlement lands pursuant to Hawai‘i Admission Act YES \_\_\_ NO X

CURRENT USE STATUS:

Land presently encumbered by Governor’s Executive Order No. 3201, dated June 8, 1983, setting aside 3,152.177 acres designated as Daniel K. Inouye International Airport under the control and management of the State of Hawai‘i, Department of Transportation, Airports Division (DOTA) for Airport Purposes.

CHARACTER OF USE:

Two T-Hangars for storage and maintenance of aircraft used in support of a commercial aeronautical flight school business (Piper PA-44-180 Fixed Wing Multi-Engine, Tail No. N-128AR and Cessna 172N Fixed Wing Single-Engine, Tail No. N-274MM).

COMMENCEMENT DATE:

To be determined by the Director of Transportation at a later date.

MONTHLY RENTAL:

\$3,100.40 (\$2,990.40, as determined from the DOTA schedule of rates and charges, commercial rate for T-hangar, established by appraisal of Airports property statewide plus \$110.00 for electricity).

SECURITY DEPOSIT:

\$9,301.20, or three (3) times the monthly rental in effect.

DCCA VERIFICATION:

Place of business registration confirmed: YES X NO \_\_\_  
Registered business name confirmed: YES X NO \_\_\_  
Good standing confirmed: YES X NO \_\_\_

CHAPTER 343, HRS - ENVIRONMENTAL ASSESSMENT:

The environmental impacts of the proposed action to the subject land area is covered by the Honolulu International Airport Master Plan Update and Noise Compatibility Program Environmental Assessment (EA), State Project No. AO1011-033. The EA is a joint State and Federal document, dated September 1989 and published in the October 23, 1989 issue of the OEQC Bulletin. Accordingly, relevant mitigation from the EA and DOT-A environmental best management practice will address minimal impacts from this action.

REMARKS:

In accordance with Section 171-55 HRS, relating to Permits, the Department of Transportation proposes to issue a revocable permit for two T-hangars for storage and maintenance of aircraft in support of a commercial aeronautical flight school business to George’s Aviation Services, Inc., situated at Daniel K. Inouye International Airport.

RECOMMENDATION:

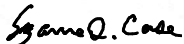
That the Board authorize the Department of Transportation to issue a month-to-month revocable permit to George’s Aviation Services, Inc., subject to: (1) terms and conditions herein outlined, which are by reference incorporated herein; and (2) such additional terms and conditions as may be prescribed by the Director of Transportation to best serve the interests of the State.

Respectfully submitted,



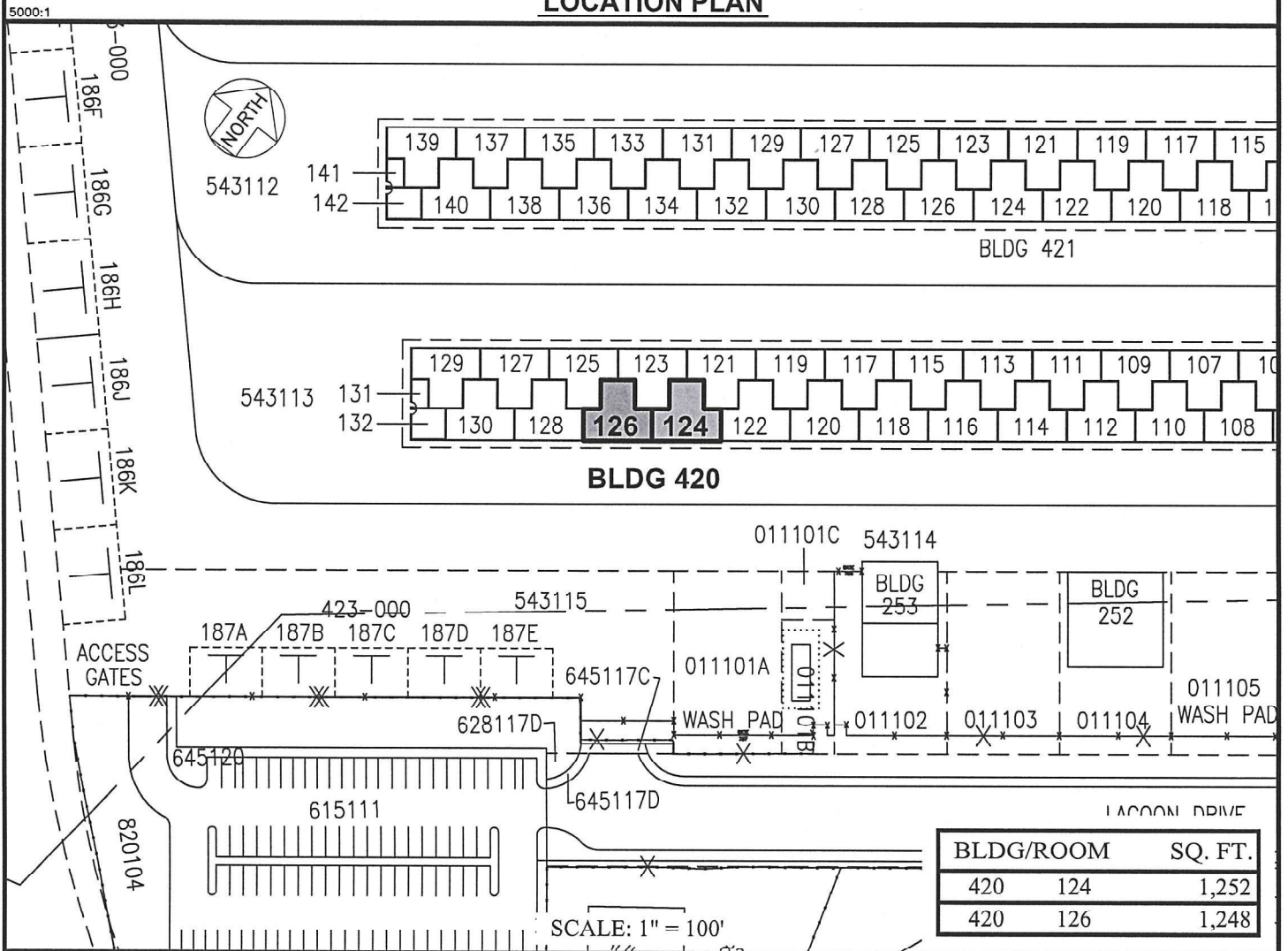
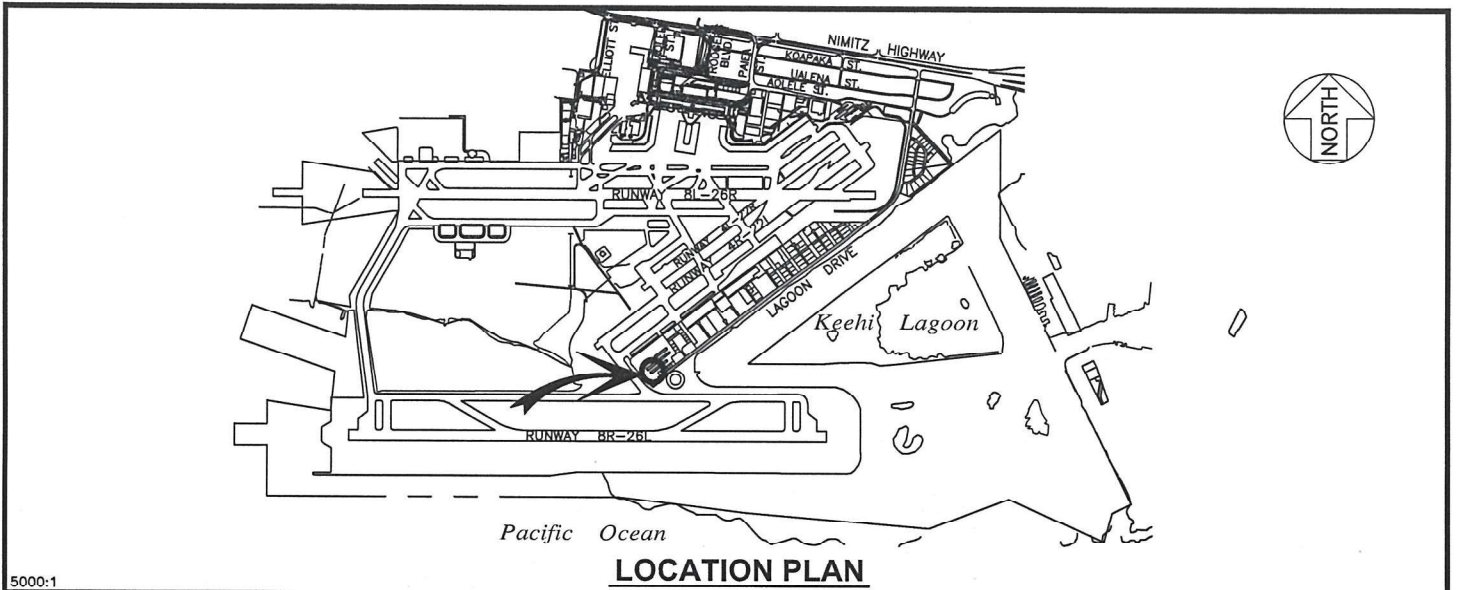
JADE T. BUTAY  
Director of Transportation

APPROVED FOR SUBMITTAL:



SUZANNE D. CASE  
Chairperson and Member





RP-9196 Airports Division	GEORGE'S AVIATION SERVICES, INC.	T-HANGAR GENERAL AVIATION SOUTH RAMP	EXHIBIT: <b>A</b> 420124 420126 PLAT 45
------------------------------	----------------------------------	--	--

**DANIEL K. INOUE INTERNATIONAL AIRPORT**

N:\AIRPORTS\HNL\_HONOLULU\CAD\PM\HNL\_420124-01.DWG